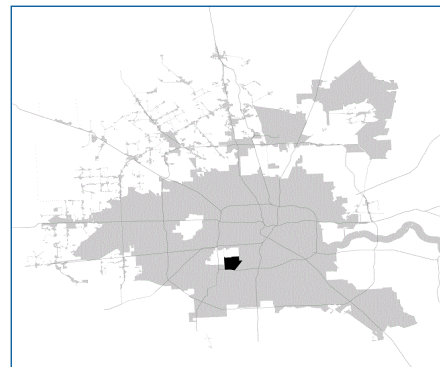


SUPER

Neighborhood

RESOURCE ASSESSMENT



	Super Neighborhood		Houston	
Pop. characteristics	2000	2017	2000	2017
Total population	18,797	22,599	1,953,631	2,267,336
Persons per sq. mile	6,025	7,240	3,166	3,394
Age of Population				
Under 5 years	6%	7%	8%	8%
5- 17 years	12%	12%	19%	17%
18- 64 years	67%	67%	64%	65%
65 and over	15%	14%	9%	10%
Ethnicity				
Non Hispanic Whites	68%	60%	31%	25%
Non Hispanic Blacks	7%	7%	25%	22%
Hispanics	11%	13%	37%	44%
Non Hispanic Asians	12%	17%	6%	7%
Non Hispanic Others	2%	3%	1%	2%
Income				
Under \$25,000	22%	16%	33%	26%
\$25,000 to \$49,999	24%	14%	31%	25%
\$50,000 to \$99,999	30%	27%	24%	26%
Over \$100,000	24%	43%	12%	23%
Median Household Income	\$57,864	\$97,320	\$36,616	\$49,399
Educational Status				
No Diploma	5%	4%	30%	22%
High School Diploma	10%	7%	20%	23%
Some College	18%	13%	23%	23%
Bachelor's or Higher	67%	76%	27%	32%
Housing and Households				
Total housing units	10,314	11,180	782,378	943,183
Occupied	91%	91%	92%	89%
Vacant	9%	9%	8%	11%
Total households	9,428	10,226	717,945	838,950
Family households	4,661	5,350	457,549	491,778
Median Housing Value	\$169,512	\$453,421	\$79,300	\$149,000

Description

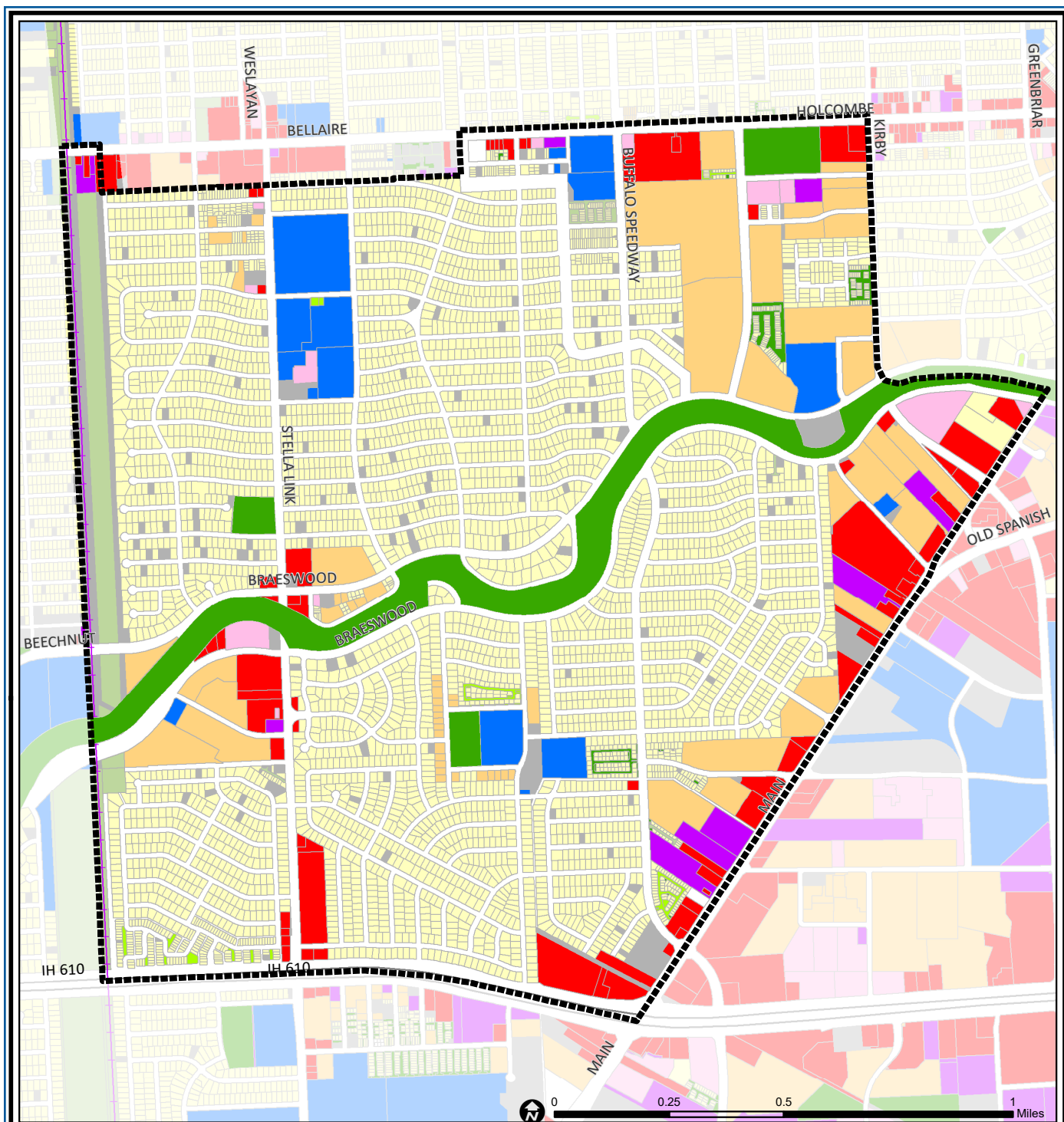
Braeswood Place is a group of comfortable subdivisions developed after World War II which have survived the pressure brought about by deteriorating apartment and commercial districts on its edges. In the process the community has reinvented itself through the creation of a community center on the site of a deteriorated collection of apartments along Stella Link. Construction of expensive new homes has resulted, originally north of Brays Bayou in Braes Heights, but now spreading to the west in Ayrshire, and the south in Braes Terrace and Knollwood Village. Other neighborhoods include Linkwood, Woodshire and Woodside.

Highlights

- ✓ Houston City Council Districts C & K
- ✓ Houston Independent School District
- ✓ 3 Police beats (includes bordering beats)
- ✓ 1,998 acres (3.12 sq. miles)



**PLANNING &
DEVELOPMENT
DEPARTMENT**



Braeswood: Land Use

Freeway	Commercial	Parks and Open Space
Rail Road	Office	Undeveloped
Super Neighborhood Boundary	Industrial	Agricultural Production
Single-family Residential	Public and Institutional	Open Water
Multi-family Residential	Transportation and Utilities	Unknown

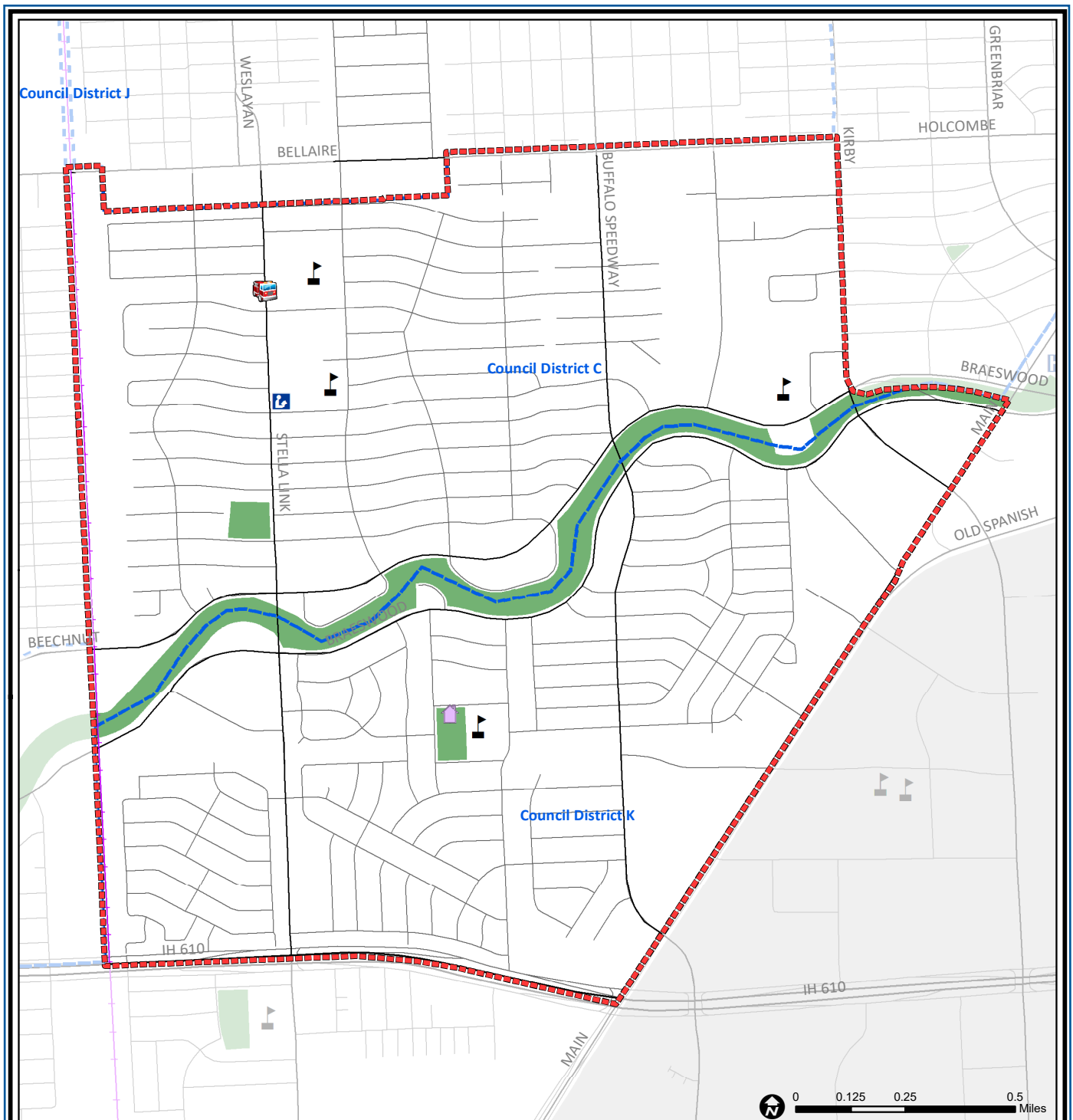
Source: City of Houston GIS Database,
Harris County Appraisal District

Date: May 20, 2019

This map is made available for reference purposes only and should not be substituted for a survey product. The City of Houston will not accept liability of any kind in conjunction with its use.



**PLANNING &
DEVELOPMENT
DEPARTMENT**



Braeswood: Public Facilities

Source: City of Houston GIS Database

Date: May 2019

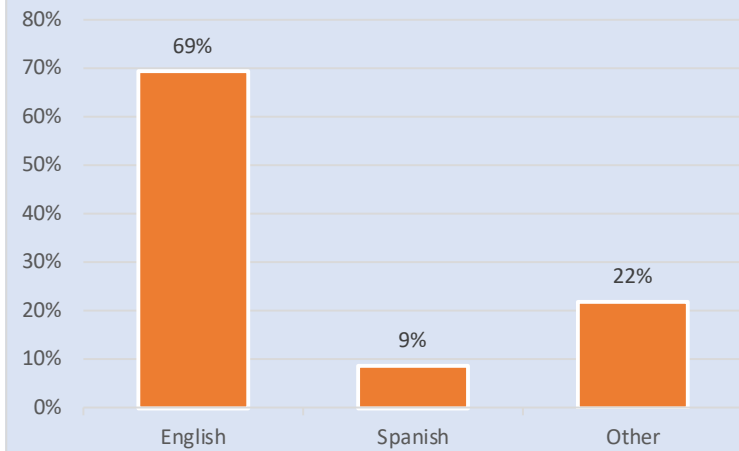
This map is made available for reference purposes only and should not be substituted for a survey product. The City of Houston will not accept liability of any kind in conjunction with its use.

- | | | |
|-----------------------------|-------------------------|---------------------|
| Super Neighborhood Boundary | Airports | Rail Road |
| Community Centers | Harris County Hospitals | Metro Rail Stations |
| Fire Station | Private Hospitals | Metro Rail Line |
| Police Station | Other Health Facilities | Parks |
| School | Library | TIRZ |

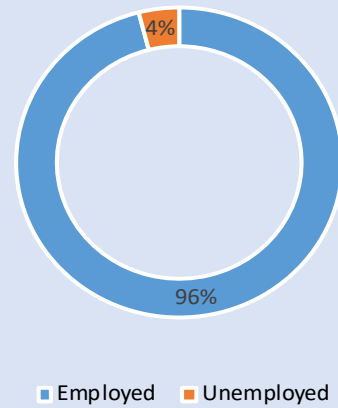


**PLANNING &
DEVELOPMENT
DEPARTMENT**

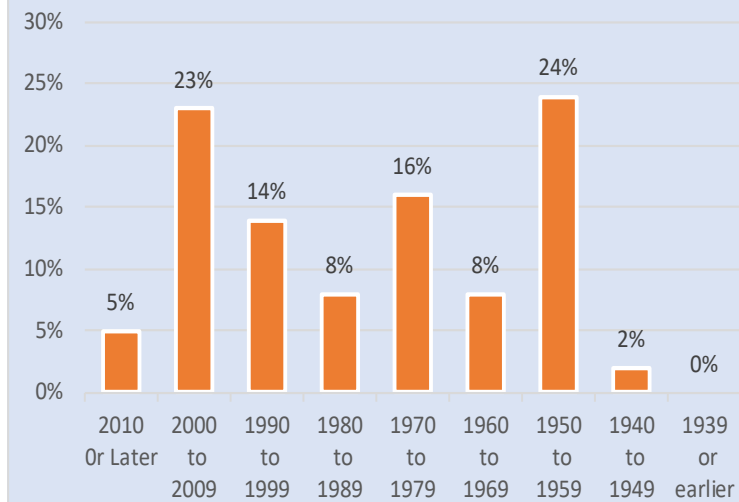
Language Spoken at Home



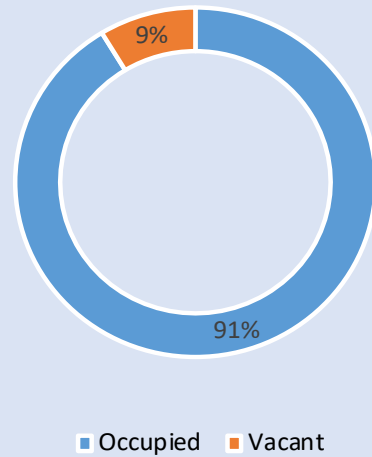
Employment Status



Housing Units by Year Built



Housing Occupancy



Source: U.S. Census Bureau, 2000
American Community Survey, 2013-2017 Estimates



**PLANNING &
DEVELOPMENT
DEPARTMENT**