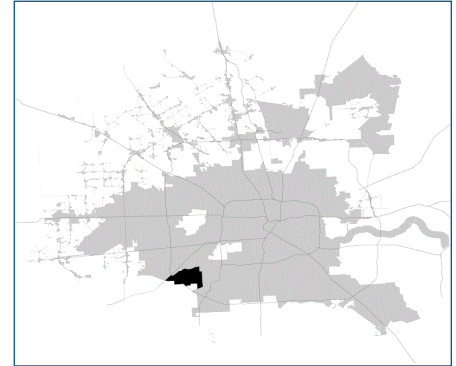


SUPER

Neighborhood

RESOURCE ASSESSMENT



	Super Neighborhood		Houston	
Pop. characteristics	2000	2017	2000	2017
Total population	49,436	65,574	1,953,631	2,267,336
Persons per sq. mile	6,250	8,320	3,166	3,394
Age of Population				
Under 5 years	10%	8%	8%	8%
5- 17 years	22%	20%	19%	17%
18- 64 years	63%	62%	64%	65%
65 and over	6%	10%	9%	10%
Ethnicity				
Non Hispanic Whites	15%	13%	31%	25%
Non Hispanic Blacks	53%	42%	25%	22%
Hispanics	25%	37%	37%	44%
Non Hispanic Asians	6%	7%	6%	7%
Non Hispanic Others	2%	1%	1%	2%
Income				
Under \$25,000	35%	32%	33%	26%
\$25,000 to \$49,999	33%	27%	31%	25%
\$50,000 to \$99,999	24%	27%	24%	26%
Over \$100,000	8%	14%	12%	23%
Median Household Income	\$36,122	\$45,474	\$36,616	\$49,399
Educational Status				
No Diploma	23%	23%	30%	22%
High School Diploma	20%	25%	20%	23%
Some College	30%	27%	23%	23%
Bachelor's or Higher	27%	25%	27%	32%
Housing and Households				
Total housing units	18,824	25,631	782,378	943,183
Occupied	95%	91%	92%	89%
Vacant	5%	9%	8%	11%
Total households	17,859	23,424	717,945	838,950
Family households	12,177	15,059	457,549	491,778
Median Housing Value	\$80,144	\$136,266	\$79,300	\$149,000

Description

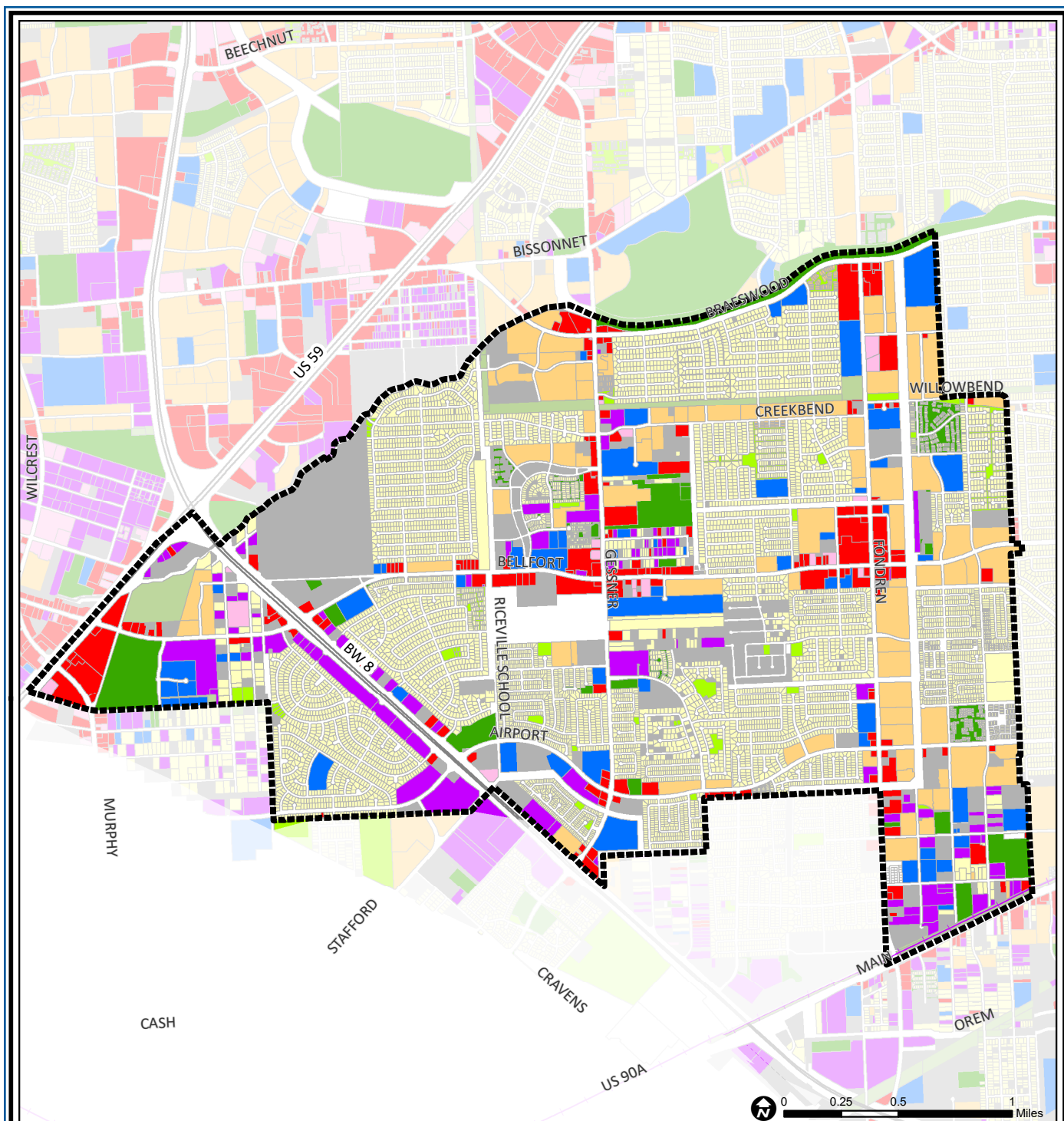
Greater Fondren Southwest is found at the southwest corner of Beltway 8. The center of the area was undeveloped until the 1970s when construction began in Fondren Southwest. The area includes the neighborhoods of Braeburn Valley West and Glenshire. Many of the homes built in Fondren Southwest were large and expensive, frequently contemporary in style. Much land was reserved for apartment construction, and thousands were built along the major thoroughfares. When the local market collapsed in the 1980s, these complexes deteriorated rapidly. The community has successfully worked to eliminate the worst of these complexes. Recently several orthodox Jewish congregations have located in the area, adding to its diversity.

Highlights

- ✓ Houston City Council Districts K & J
- ✓ Houston Independent School District
- ✓ Alief Independent School District
- ✓ Stafford Municipal School District
- ✓ 5 Police beats (includes bordering beats)
- ✓ 5,063 acres (7.91 sq. miles)



**PLANNING &
DEVELOPMENT
DEPARTMENT**



Brays Oaks: Land Use

Freeway	Commercial	Parks and Open Space
Rail Road	Office	Undeveloped
Super Neighborhood Boundary	Industrial	Agricultural Production
Single-family Residential	Public and Institutional	Open Water
Multi-family Residential	Transportation and Utilities	Unknown

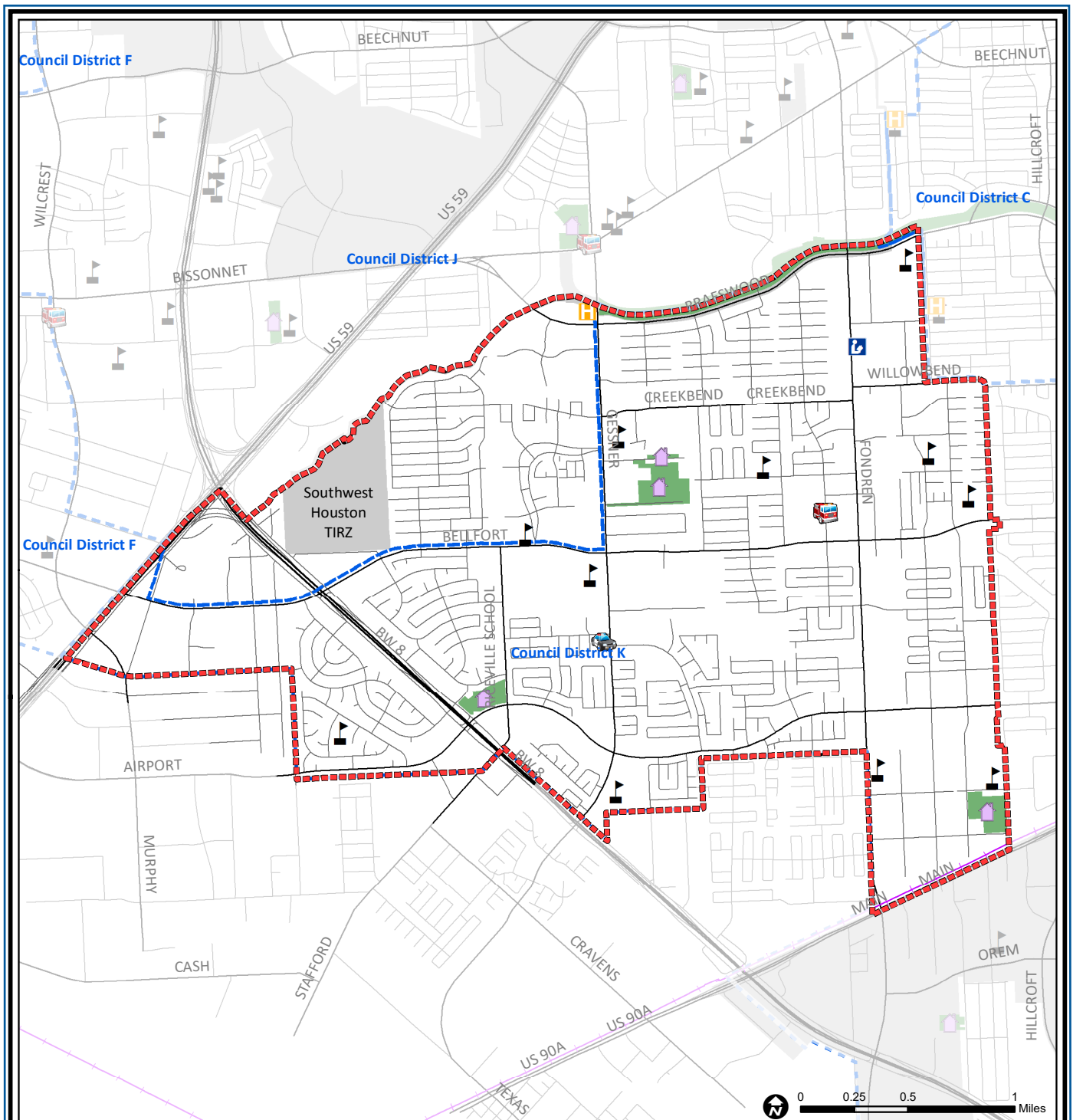
Source: City of Houston GIS Database,
Harris County Appraisal District

Date: May 20, 2019

This map is made available for reference purposes
only and should not be substituted for a survey
product. The City of Houston will not accept
liability of any kind in conjunction with its use.



**PLANNING &
DEVELOPMENT
DEPARTMENT**



Brays Oaks: Public Facilities

Super Neighborhood Boundary

Community Centers

Fire Station

Police Station

School

Airports

Harris County Hospitals

Private Hospitals

Other Health Facilities

Library

Rail Road

Metro Rail Stations

Metro Rail Line

Parks

TIRZ

Source: City of Houston GIS Database

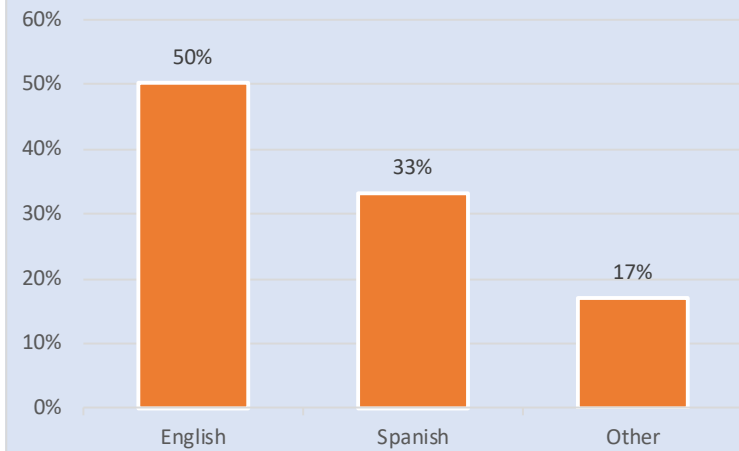
Date: May 2019

This map is made available for reference purposes only and should not be substituted for a survey product. The City of Houston will not accept liability of any kind in conjunction with its use.

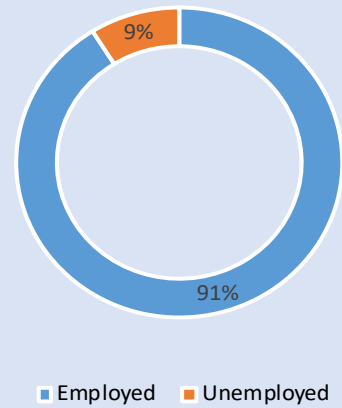


**PLANNING &
DEVELOPMENT
DEPARTMENT**

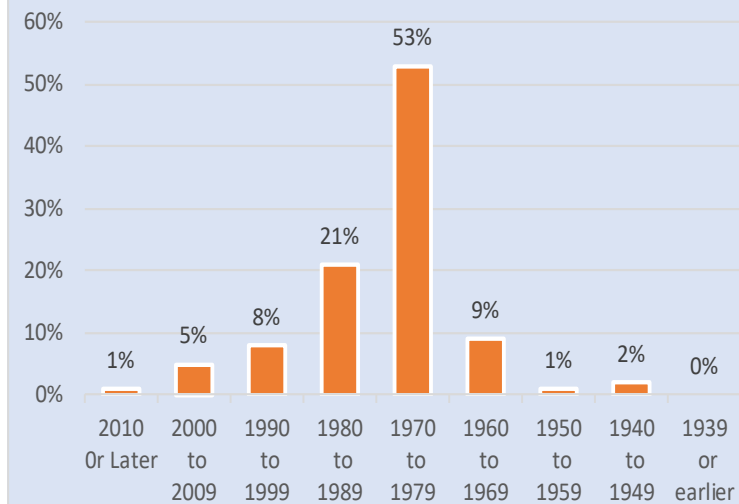
Language Spoken at Home



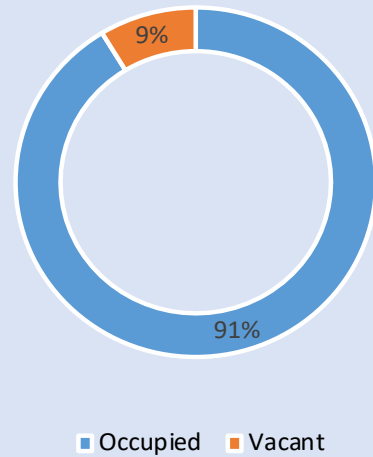
Employment Status



Housing Units by Year Built



Housing Occupancy



Source: U.S. Census Bureau, 2000
American Community Survey, 2013-2017 Estimates



**PLANNING &
DEVELOPMENT
DEPARTMENT**