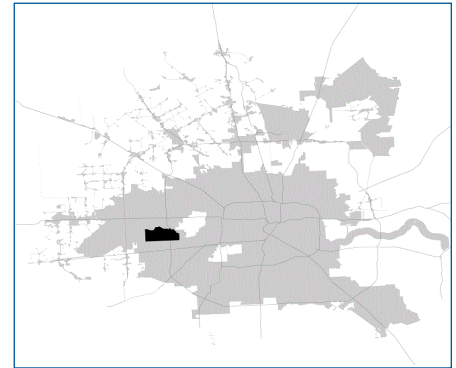


SUPER

Neighborhood

RESOURCE ASSESSMENT



	Super Neighborhood		Houston	
Pop. characteristics	2000	2017	2000	2017
Total population	42,100	43,775	1,953,631	2,267,336
Persons per sq. mile	6,256	6,508	3,166	3,394
Age of Population				
Under 5 years	8%	8%	8%	8%
5- 17 years	14%	16%	19%	17%
18- 64 years	70%	63%	64%	65%
65 and over	8%	13%	9%	10%
Ethnicity				
Non Hispanic Whites	63%	45%	31%	25%
Non Hispanic Blacks	10%	21%	25%	22%
Hispanics	18%	25%	37%	44%
Non Hispanic Asians	7%	7%	6%	7%
Non Hispanic Others	2%	2%	1%	2%
Income				
Under \$25,000	16%	21%	33%	26%
\$25,000 to \$49,999	29%	19%	31%	25%
\$50,000 to \$99,999	31%	28%	24%	26%
Over \$100,000	23%	32%	12%	23%
Median Household Income	\$59,211	\$77,819	\$36,616	\$49,399
Educational Status				
No Diploma	7%	8%	30%	22%
High School Diploma	12%	13%	20%	23%
Some College	28%	28%	23%	23%
Bachelor's or Higher	53%	51%	27%	32%
Housing and Households				
Total housing units	19,996	20,804	782,378	943,183
Occupied	94%	89%	92%	89%
Vacant	6%	11%	8%	11%
Total households	18,751	18,567	717,945	838,950
Family households	11,121	10,975	457,549	491,778
Median Housing Value	\$143,310	\$293,178	\$79,300	\$149,000

Description

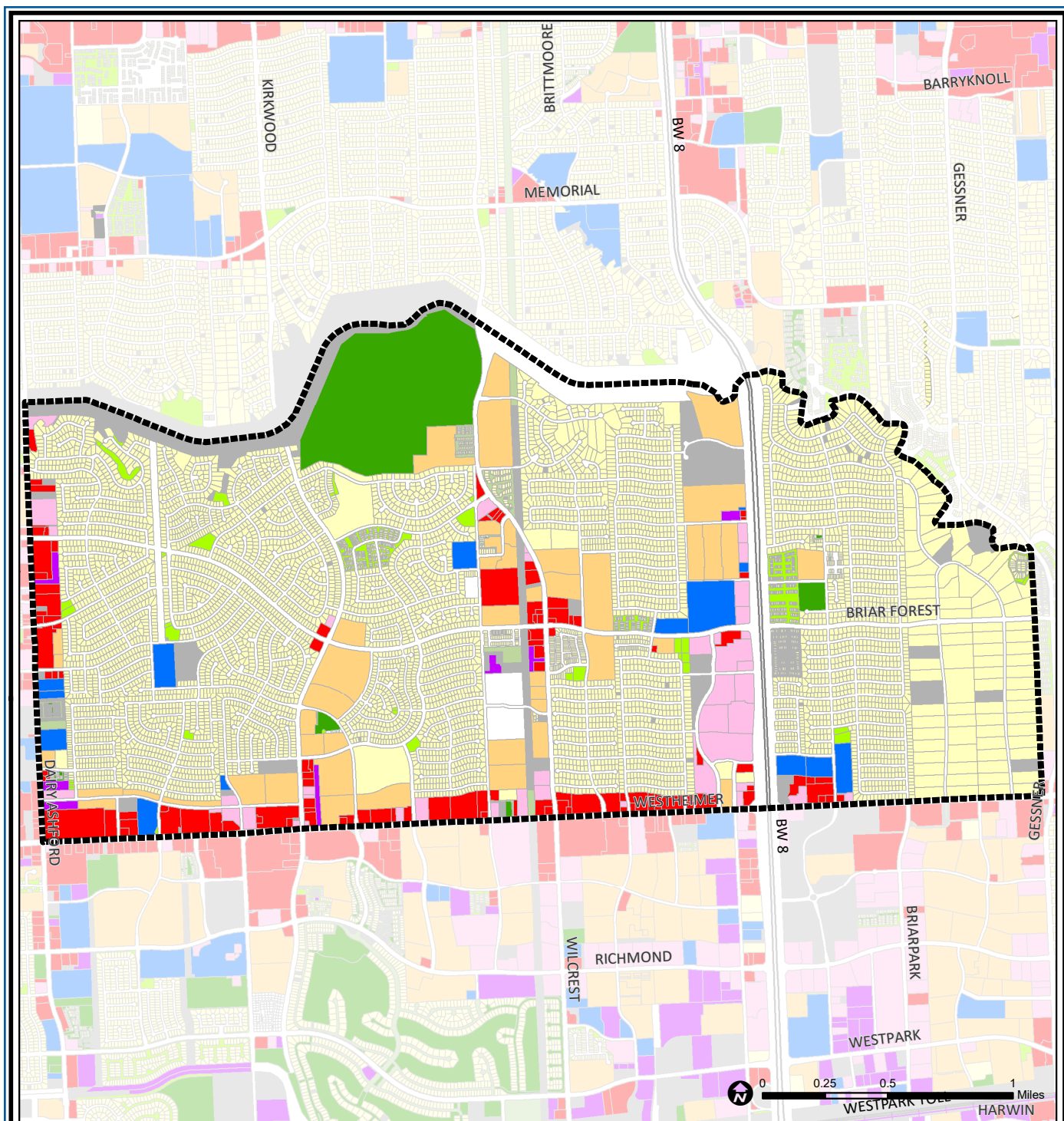
The Briarforest Area is bound by Buffalo Bayou and Gessner, Westheimer and Dairy Ashford roads. A significant feature of this neighborhood is a large wooded area east of Wilcrest Drive and adjacent to Buffalo Bayou on the north. The area is largely single-family residential with some multi-family, patio and townhomes located along the area's major thoroughfares. Offices complexes are located along Sam Houston Parkway which passes through the easternmost sector of the area.

Highlights

- ✓ Houston City Council District G
- ✓ Houston Independent School District
- ✓ Spring Branch Independent School District
- ✓ Alief Independent School District
- ✓ 6 Police beats (includes bordering beats)
- ✓ 4,305 acres (6.73 sq. miles)



**PLANNING &
DEVELOPMENT
DEPARTMENT**



Briar Forest: Land Use

Freeway	Commercial	Parks and Open Space
Rail Road	Office	Undeveloped
Super Neighborhood Boundary	Industrial	Agricultural Production
Single-family Residential	Public and Institutional	Open Water
Multi-family Residential	Transportation and Utilities	Unknown

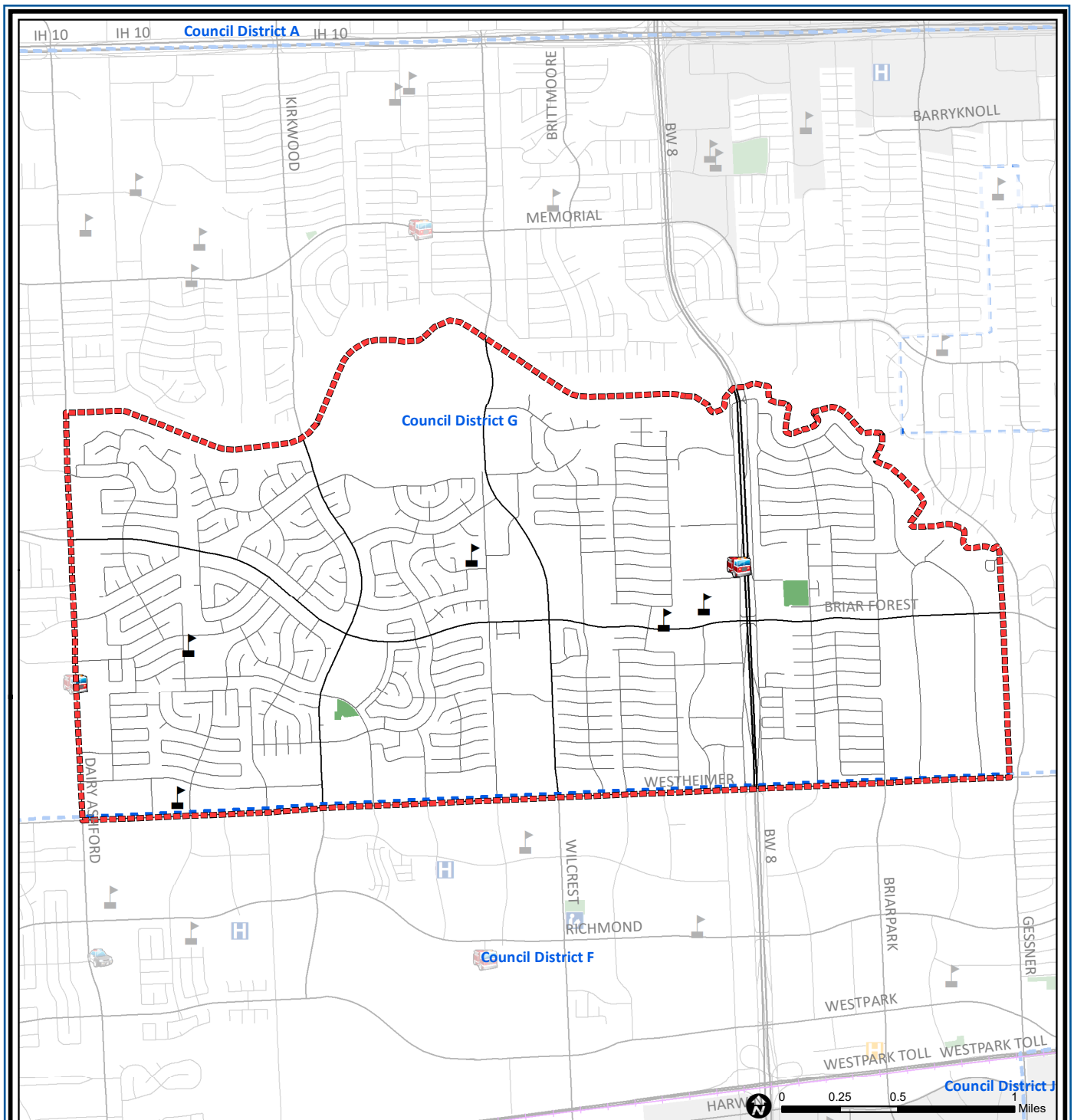
Source: City of Houston GIS Database,
Harris County Appraisal District

Date: May 20, 2019

This map is made available for reference purposes only and should not be substituted for a survey product. The City of Houston will not accept liability of any kind in conjunction with its use.



**PLANNING &
DEVELOPMENT
DEPARTMENT**



Briar Forest: Public Facilities

- Super Neighborhood Boundary
- Community Centers
- Fire Station
- Police Station
- School

- Airports
- Harris County Hospitals
- Private Hospitals
- Other Health Facilities
- Library

- Rail Road
- Metro Rail Stations
- Metro Rail Line
- Parks
- TIRZ

Source: City of Houston GIS Database

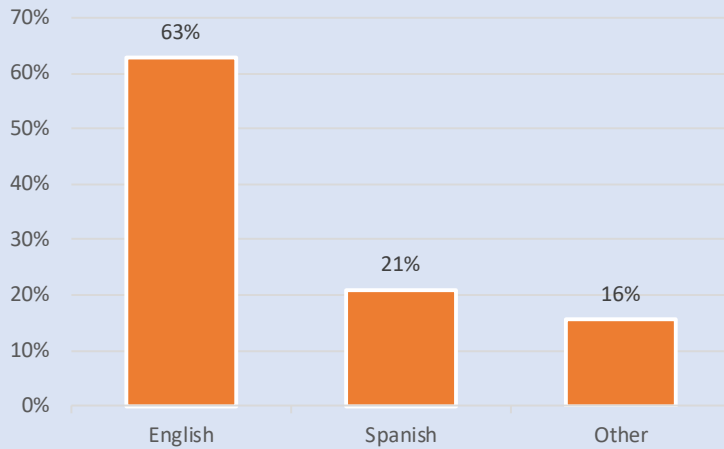
Date: May 2019

This map is made available for reference purposes only and should not be substituted for a survey product. The City of Houston will not accept liability of any kind in conjunction with its use.

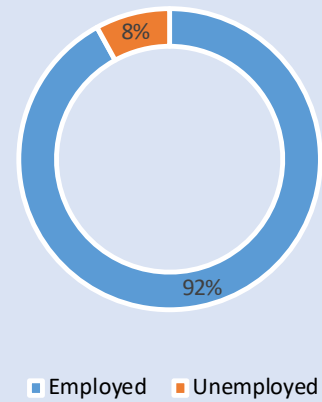


**PLANNING &
DEVELOPMENT
DEPARTMENT**

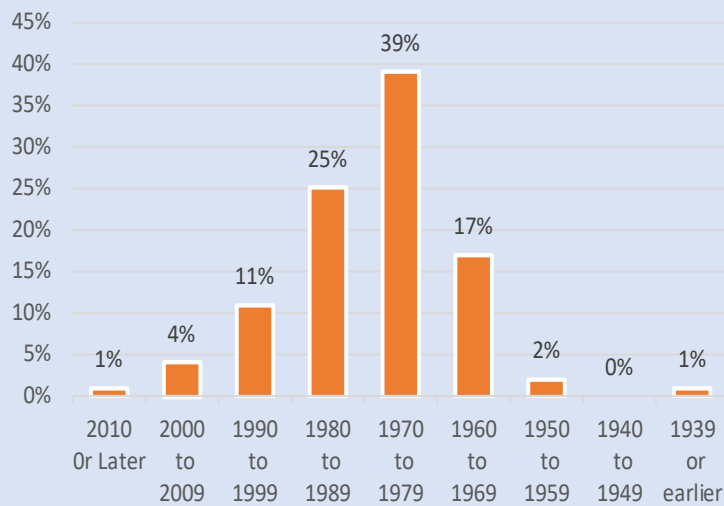
Language Spoken at Home



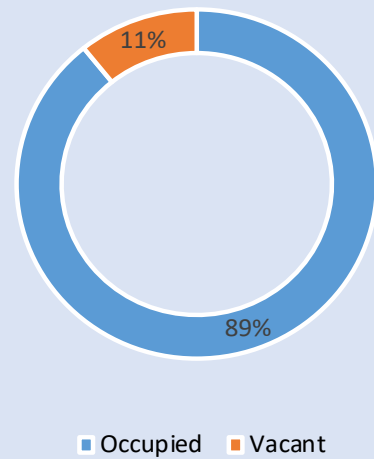
Employment Status



Housing Units by Year Built



Housing Occupancy



Source: U.S. Census Bureau, 2000
American Community Survey, 2013-2017 Estimates



**PLANNING &
DEVELOPMENT
DEPARTMENT**