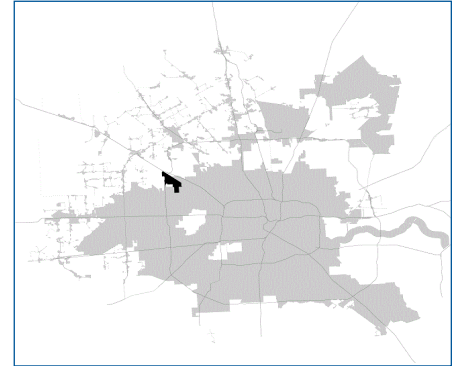


SUPER

Neighborhood

RESOURCE ASSESSMENT



	Super Neighborhood		Houston	
Pop. characteristics	2000	2017	2000	2017
Total population	1,928	3,673	1,953,631	2,267,336
Persons per sq. mile	622	1,219	3,166	3,394
Age of Population				
Under 5 years	8%	4%	8%	8%
5- 17 years	22%	18%	19%	17%
18- 64 years	59%	69%	64%	65%
65 and over	12%	9%	9%	10%
Ethnicity				
Non Hispanic Whites	9%	12%	31%	25%
Non Hispanic Blacks	45%	24%	25%	22%
Hispanics	44%	50%	37%	44%
Non Hispanic Asians	2%	14%	6%	7%
Non Hispanic Others	1%	0%	1%	2%
Income				
Under \$25,000	43%	18%	33%	26%
\$25,000 to \$49,999	24%	29%	31%	25%
\$50,000 to \$99,999	26%	29%	24%	26%
Over \$100,000	6%	24%	12%	23%
Median Household Income	\$12,089	\$56,949	\$36,616	\$49,399
Educational Status				
No Diploma	44%	28%	30%	22%
High School Diploma	28%	26%	20%	23%
Some College	18%	27%	23%	23%
Bachelor's or Higher	10%	19%	27%	32%
Housing and Households				
Total housing units	640	1,362	782,378	943,183
Occupied	88%	92%	92%	89%
Vacant	12%	8%	8%	11%
Total households	561	1,257	717,945	838,950
Family households	427	786	457,549	491,778
Median Housing Value	\$26,992	\$124,217	\$79,300	\$149,000

Description

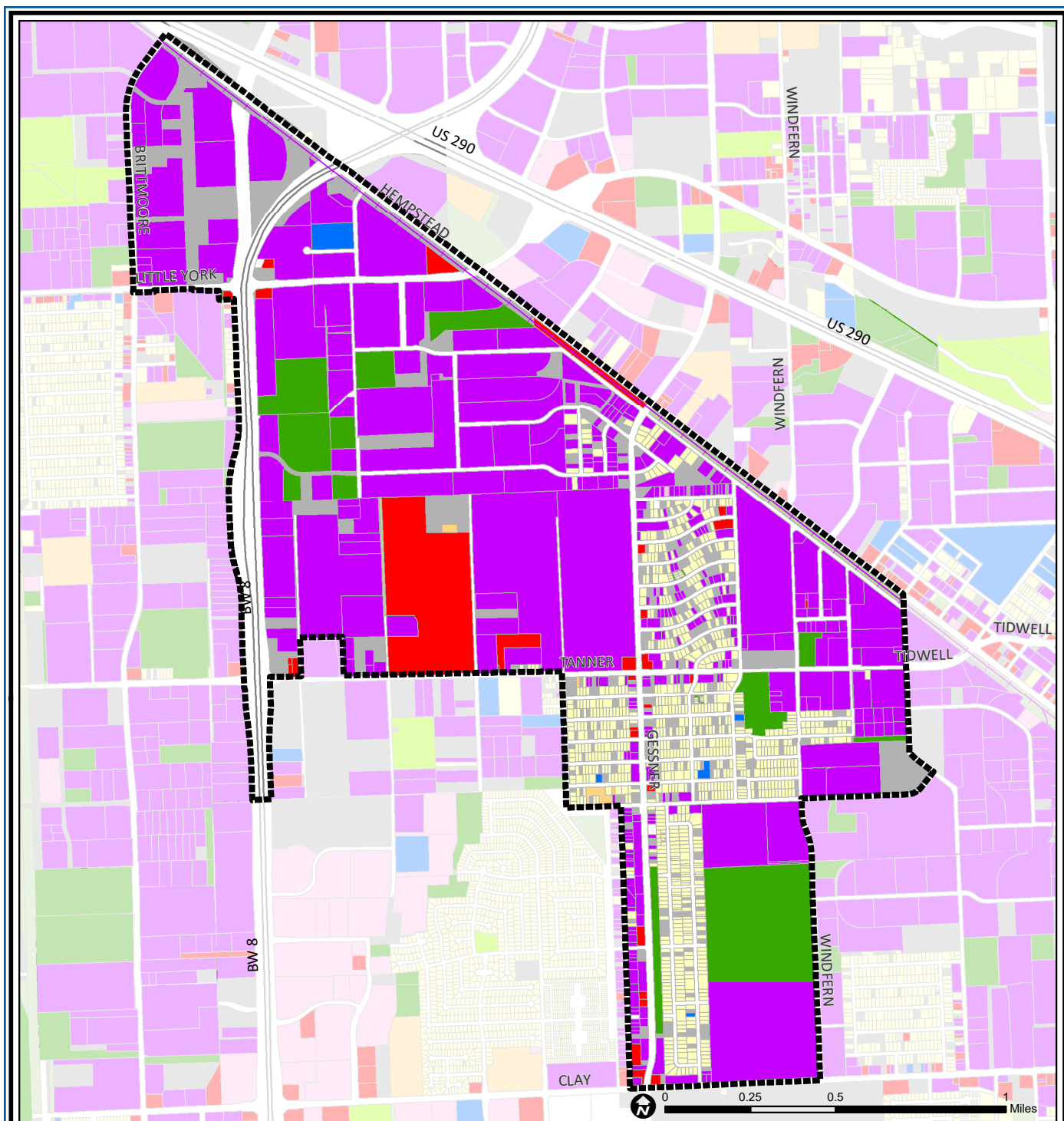
Carverdale is a small residential area originally marketed to African-Americans as homesites just outside the city. It is now surrounded by large industrial parks and warehouse complexes. Its proximity to the Northwest Freeway and Beltway 8 has made this area a popular one for industrial and distribution complexes. The residential area is characterized by modest homes on side streets and small retail establishments on the major thoroughfares. Houston Community College Northwest Campus is located nearby, south of Tanner Road.

Highlights

- ✓ Houston City Council District A
- ✓ Cypress Fairbanks Independent School District
- ✓ 2 Police beats (includes bordering beats)
- ✓ 1,978 acres (3.1 sq. miles)



**PLANNING &
DEVELOPMENT
DEPARTMENT**



Carverdale: Land Use

Freeway	Commercial	Parks and Open Space
Rail Road	Office	Undeveloped
Super Neighborhood Boundary	Industrial	Agricultural Production
Single-family Residential	Public and Institutional	Open Water
Multi-family Residential	Transportation and Utilities	Unknown

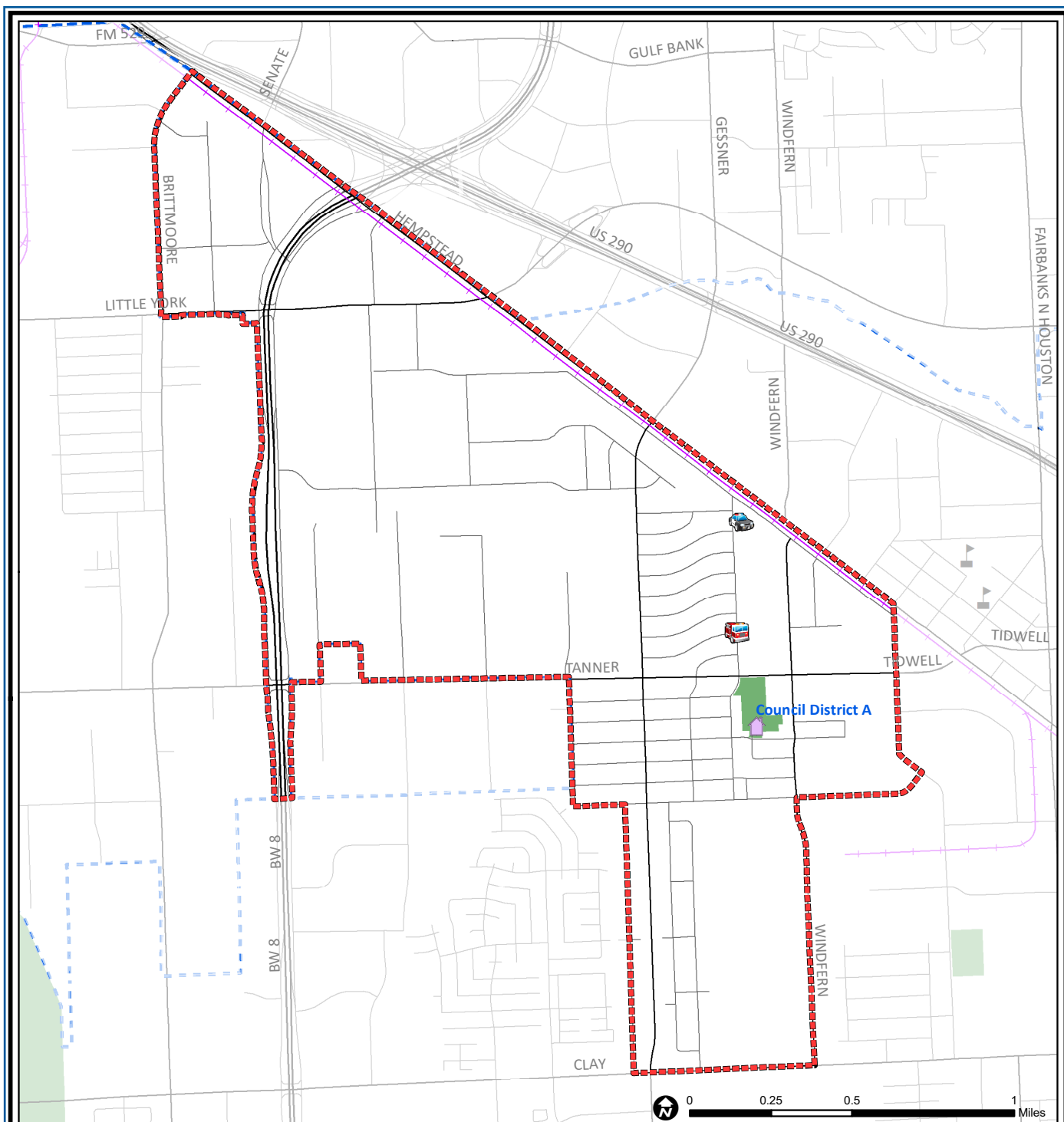
Source: City of Houston GIS Database,
Harris County Appraisal District

Date: May 20, 2019

This map is made available for reference purposes only and should not be substituted for a survey product. The City of Houston will not accept liability of any kind in conjunction with its use.



**PLANNING &
DEVELOPMENT
DEPARTMENT**



Carverdale: Public Facilities

- Super Neighborhood Boundary
- Community Centers
- Fire Station
- Police Station
- School

- Airports
- Harris County Hospitals
- Private Hospitals
- Other Health Facilities
- Library

- Rail Road
- Metro Rail Stations
- Metro Rail Line
- Parks
- TIRZ

Source: City of Houston GIS Database

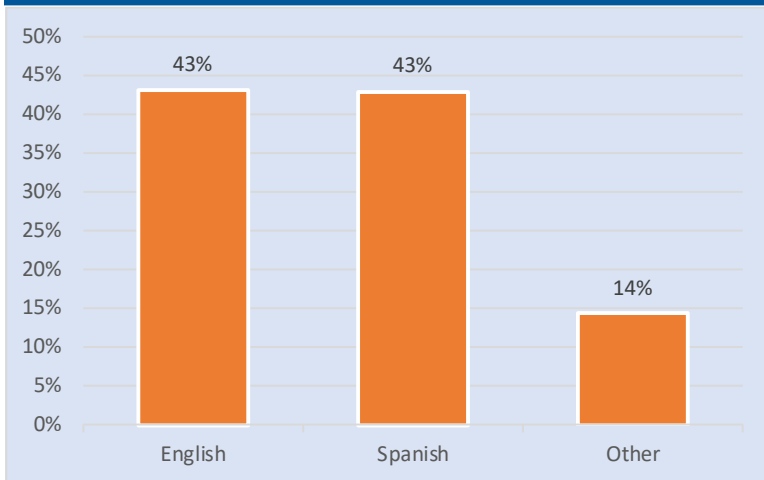
Date: May 2019

This map is made available for reference purposes only and should not be substituted for a survey product. The City of Houston will not accept liability of any kind in conjunction with its use.

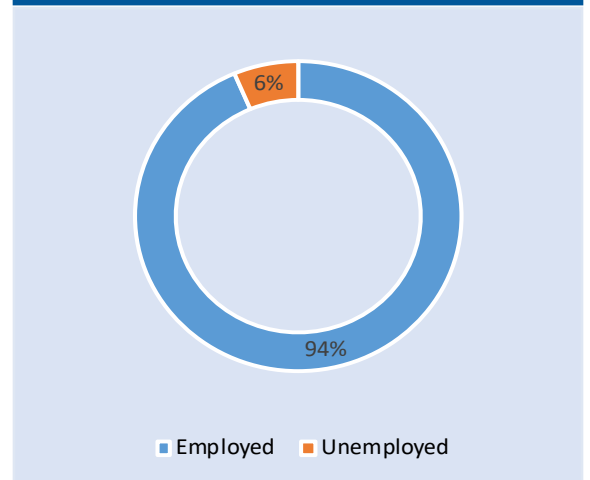


**PLANNING &
DEVELOPMENT
DEPARTMENT**

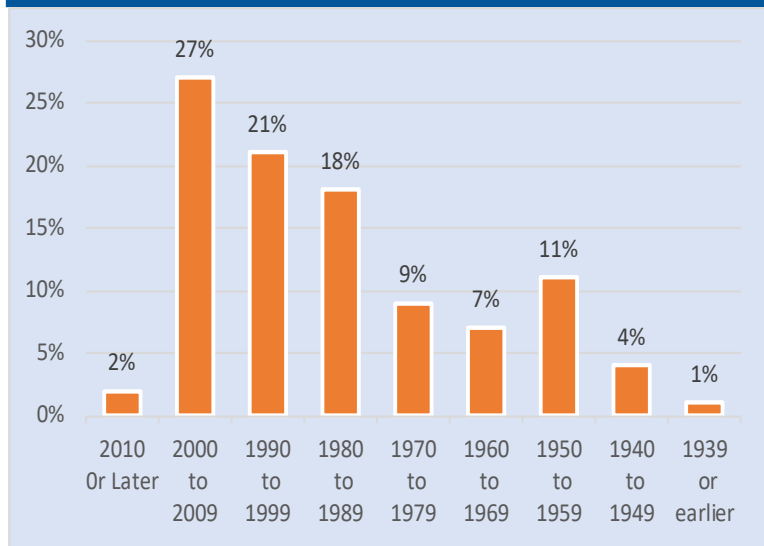
Language Spoken at Home



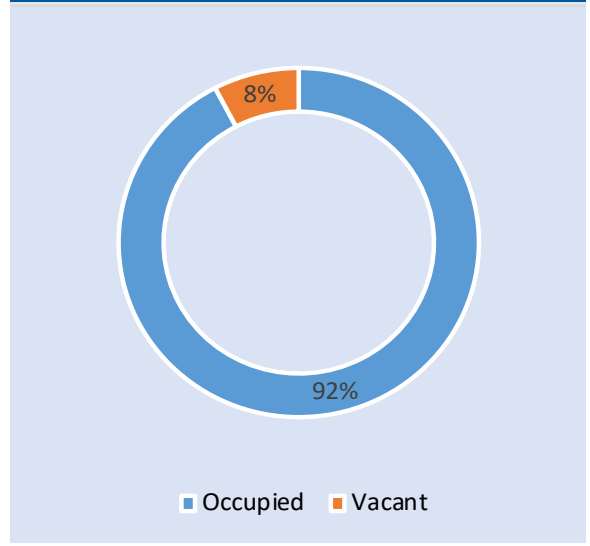
Employment Status



Housing Units by Year Built



Housing Occupancy



Source: U.S. Census Bureau, 2000
American Community Survey, 2013-2017 Estimates



**PLANNING &
DEVELOPMENT
DEPARTMENT**