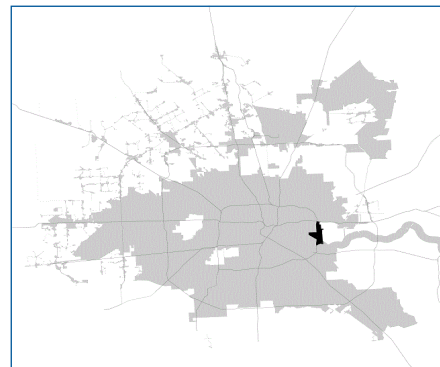


SUPER

Neighborhood

RESOURCE ASSESSMENT



| | Super Neighborhood | | Houston | |
|--------------------------------|--------------------|----------|-----------|-----------|
| Pop. characteristics | 2000 | 2017 | 2000 | 2017 |
| Total population | 2,437 | 3,339 | 1,953,631 | 2,267,336 |
| Persons per sq. mile | 886 | 1,210 | 3,166 | 3,394 |
| Age of Population | | | | |
| Under 5 years | 6% | 10% | 8% | 8% |
| 5- 17 years | 22% | 20% | 19% | 17% |
| 18- 64 years | 54% | 59% | 64% | 65% |
| 65 and over | 18% | 11% | 9% | 10% |
| Ethnicity | | | | |
| Non Hispanic Whites | 1% | 4% | 31% | 25% |
| Non Hispanic Blacks | 91% | 43% | 25% | 22% |
| Hispanics | 8% | 51% | 37% | 44% |
| Non Hispanic Asians | 0% | 1% | 6% | 7% |
| Non Hispanic Others | 1% | 1% | 1% | 2% |
| Income | | | | |
| Under \$25,000 | 51% | 41% | 33% | 26% |
| \$25,000 to \$49,999 | 34% | 34% | 31% | 25% |
| \$50,000 to \$99,999 | 14% | 15% | 24% | 26% |
| Over \$100,000 | 2% | 10% | 12% | 23% |
| Median Household Income | \$23,267 | \$32,698 | \$36,616 | \$49,399 |
| Educational Status | | | | |
| No Diploma | 40% | 30% | 30% | 22% |
| High School Diploma | 33% | 31% | 20% | 23% |
| Some College | 20% | 28% | 23% | 23% |
| Bachelor's or Higher | 6% | 11% | 27% | 32% |
| Housing and Households | | | | |
| Total housing units | 1,073 | 1,385 | 782,378 | 943,183 |
| Occupied | 85% | 85% | 92% | 89% |
| Vacant | 15% | 15% | 8% | 11% |
| Total households | 909 | 1,180 | 717,945 | 838,950 |
| Family households | 610 | 685 | 457,549 | 491,778 |
| Median Housing Value | \$32,888 | \$66,017 | \$79,300 | \$149,000 |

Description

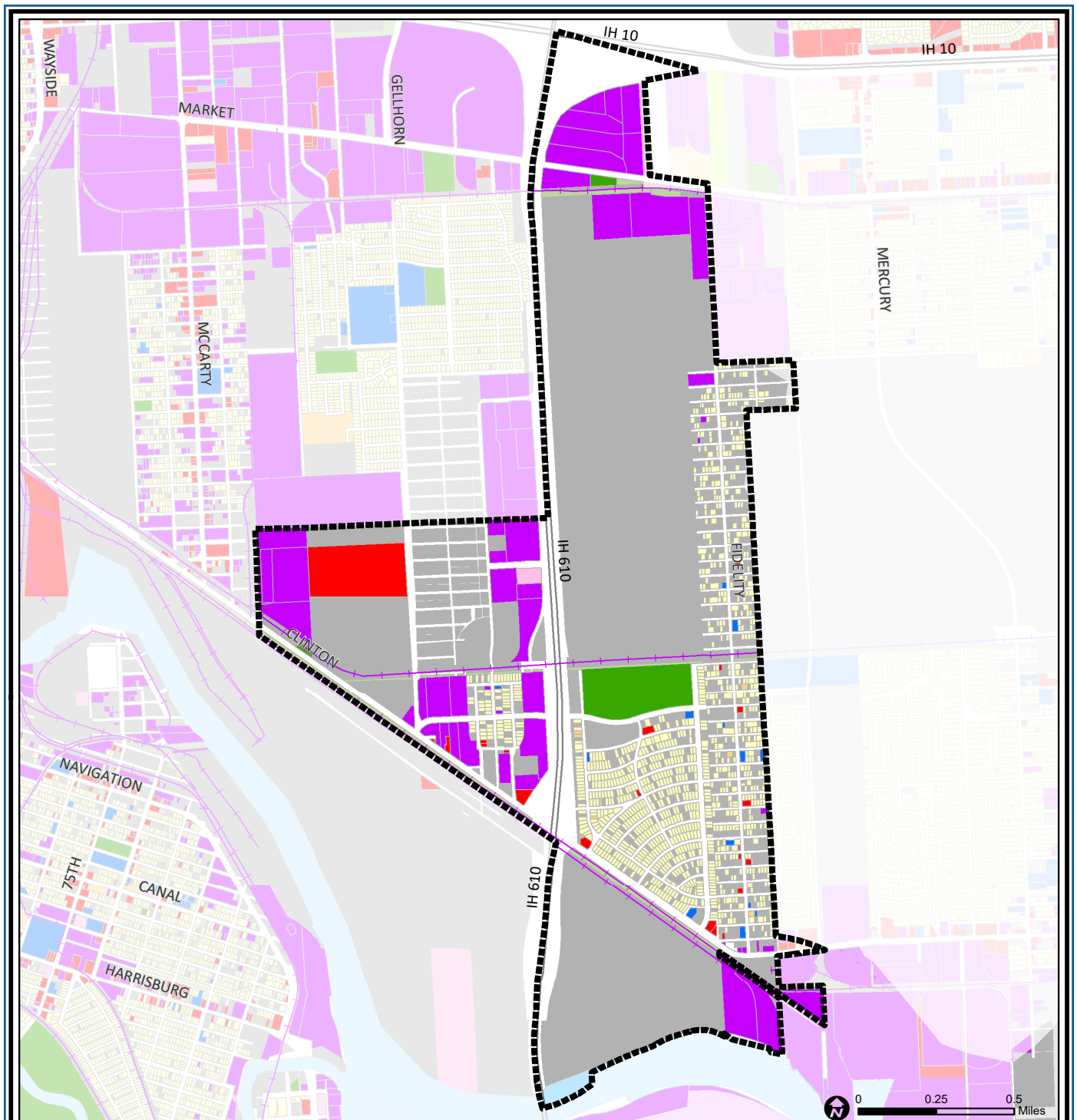
Clinton Park/Fidelity is a small community located just north of Clinton Drive, adjacent to the City of Galena Park. It is split between Houston ISD (Clinton Park) and Galena Park ISD (Fidelity), and includes a part of the Port of Houston. From its inception, this area has been almost exclusively an African-American community. Development began in the area spurred by the proximity to jobs in the Port and nearby Ship Channel industries. Large holding ponds containing materials dredged from the Houston Ship Channel are located adjacent to the residential areas.

Highlights

- ✓ Houston City Council Districts I, B & H
- ✓ Houston Independent School District
- ✓ Galena Park Independent School District
- ✓ 1 Police beat (includes bordering beats)
- ✓ 1,758 acres (2.75 sq. miles)



**PLANNING &
DEVELOPMENT
DEPARTMENT**



Clinton Park / Tri-Community: Land Use

| | | |
|-----------------------------|------------------------------|-------------------------|
| Freeway | Commercial | Parks and Open Space |
| Rail Road | Office | Undeveloped |
| Super Neighborhood Boundary | Industrial | Agricultural Production |
| Single-family Residential | Public and Institutional | Open Water |
| Multi-family Residential | Transportation and Utilities | Unknown |

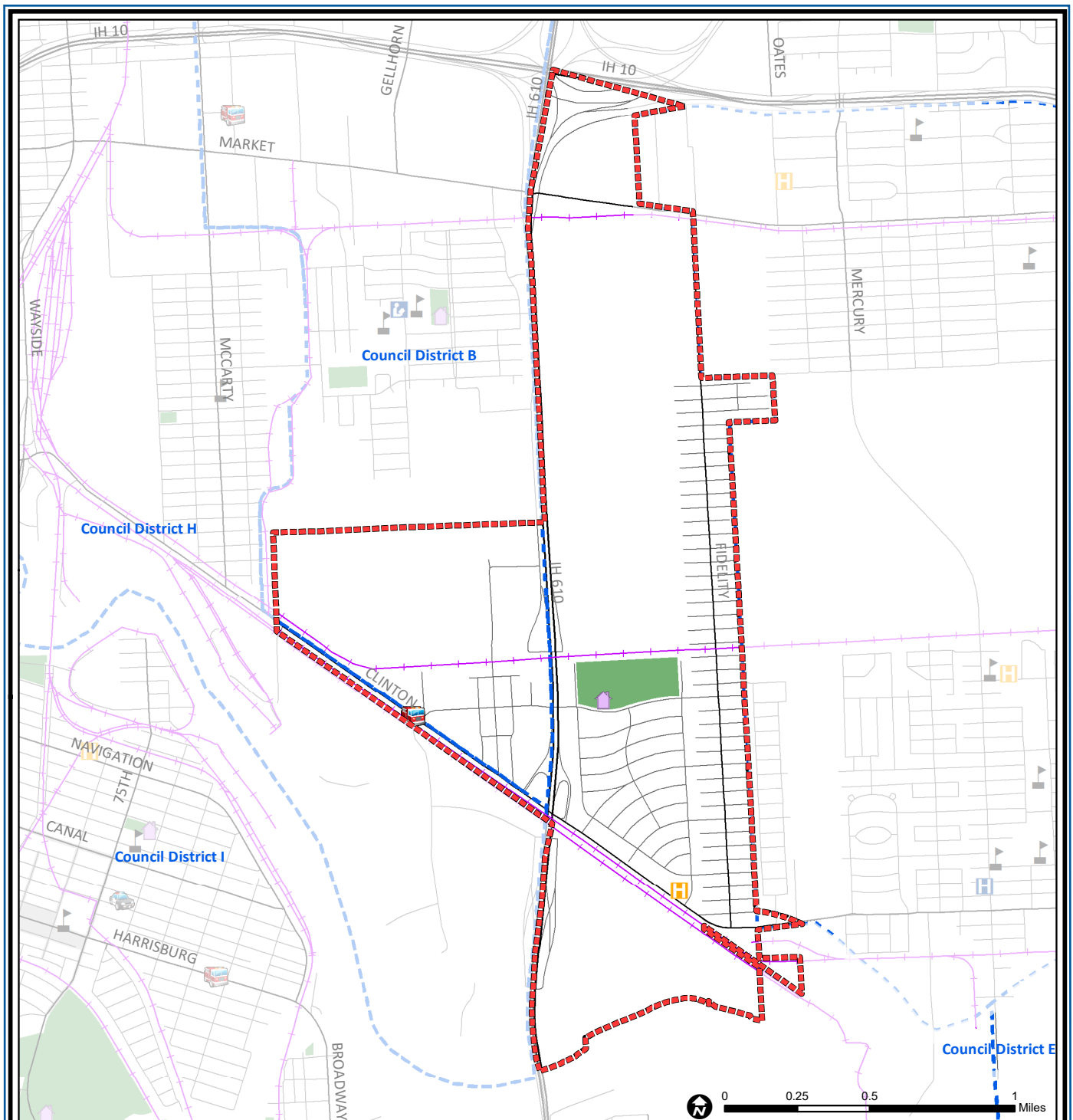
Source: City of Houston GIS Database,
Harris County Appraisal District

Date: May 20, 2019

This map is made available for reference purposes only and should not be substituted for a survey product. The City of Houston will not accept liability of any kind in conjunction with its use.



**PLANNING &
DEVELOPMENT
DEPARTMENT**



Clinton Park Tri-Community: Public Facilities

Source: City of Houston GIS Database

Date: May 2019

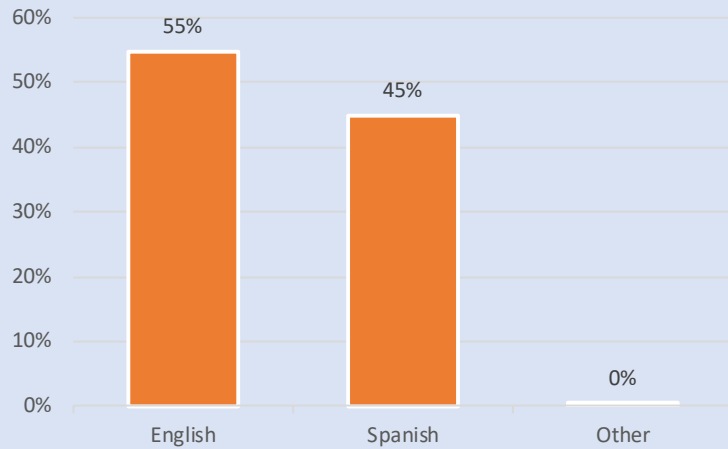
This map is made available for reference purposes only and should not be substituted for a survey product. The City of Houston will not accept liability of any kind in conjunction with its use.

- | | | |
|-----------------------------|-------------------------|---------------------|
| Super Neighborhood Boundary | Airports | Rail Road |
| Community Centers | Harris County Hospitals | Metro Rail Stations |
| Fire Station | Private Hospitals | Metro Rail Line |
| Police Station | Other Health Facilities | Parks |
| School | Library | TIRZ |

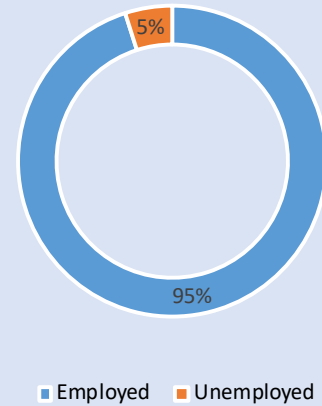


**PLANNING &
DEVELOPMENT
DEPARTMENT**

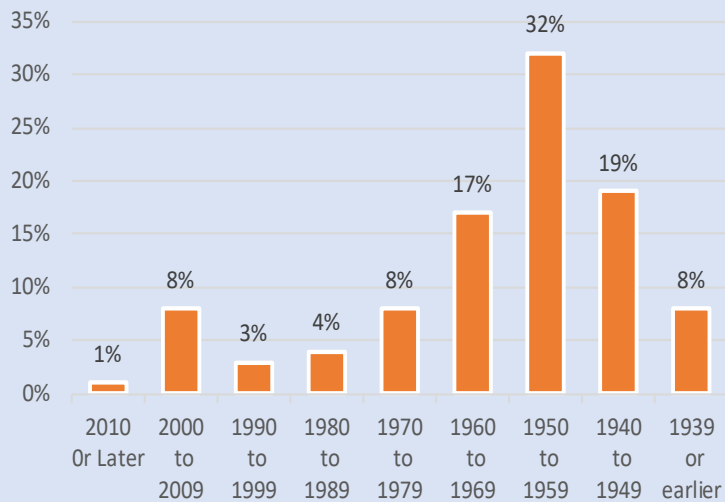
Language Spoken at Home



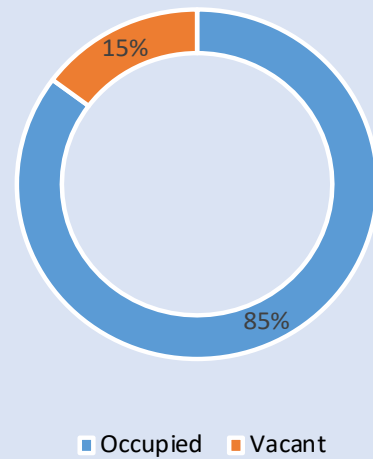
Employment Status



Housing Units by Year Built



Housing Occupancy



Source: U.S. Census Bureau, 2000
American Community Survey, 2013-2017 Estimates



**PLANNING &
DEVELOPMENT
DEPARTMENT**