

# SUPER

## Neighborhood

### RESOURCE ASSESSMENT



#### Description

This super neighborhood includes El Dorado, Oates Prairie and OST (Old Spanish Trail) Acres. El Dorado/Oates Prairie is in north-east Houston outside of Loop 610 and consists of a collection of small subdivisions and scattered industrial facilities. Oates Prairie is a residential area begun when the area was rural and which developed further because of its proximity to jobs in Houston and the Channel industries. El Dorado is a typical tract home subdivision. OST Acres is a large-lot subdivision close to Loop 610. The route of the Crosby Freeway (Hwy 90) crosses an eastern corner of the community. The excellent access the new freeway and existing thoroughfares provide makes this area desirable for further development of warehouse and industrial facilities on the remaining large tracts of undeveloped land.

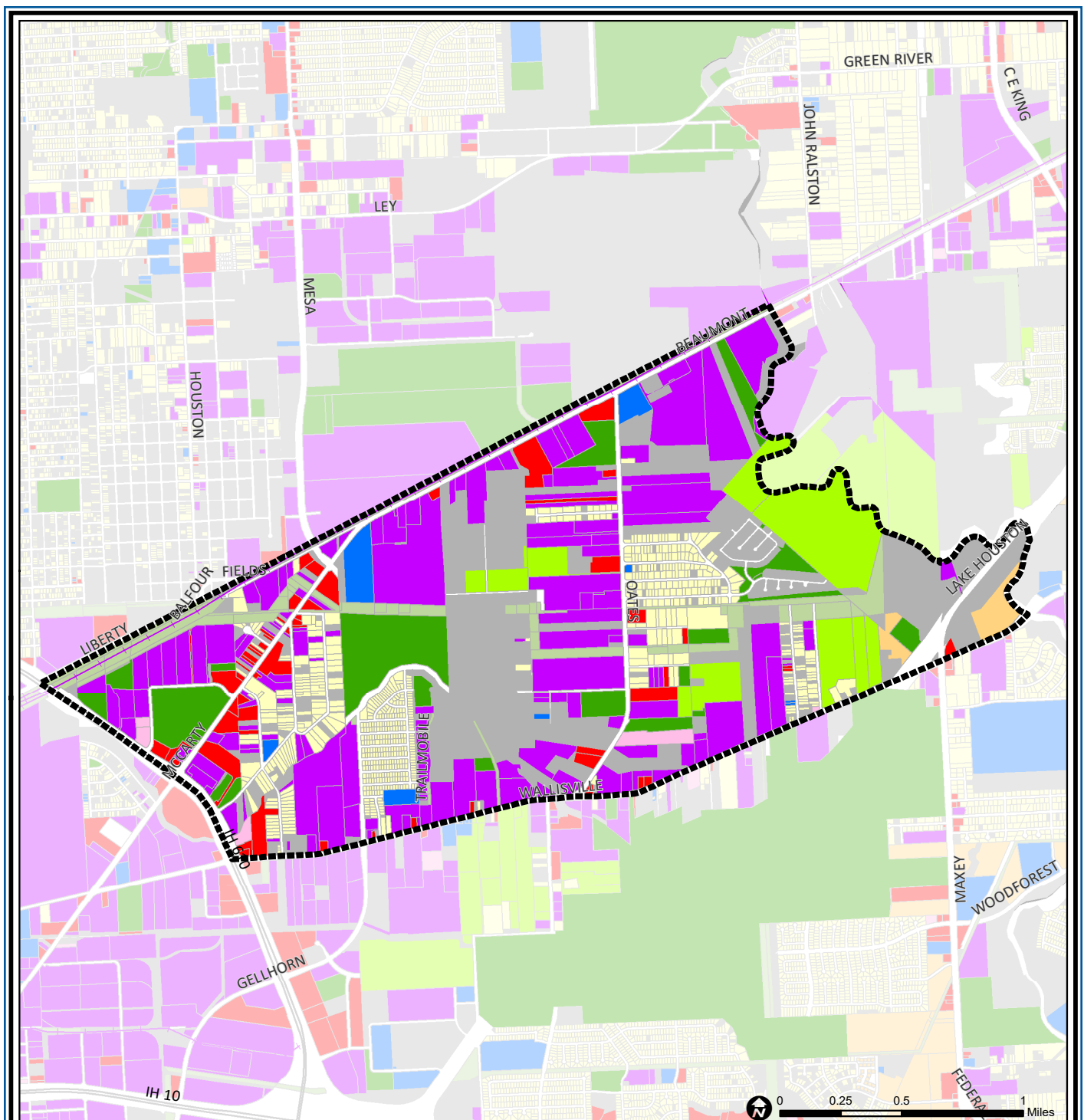
#### Highlights

- ✓ Houston City Council District I
- ✓ Houston Independent School District
- ✓ North Forest Independent School District
- ✓ Galena Park Independent School District
- ✓ 4 Police beats (includes bordering beats)
- ✓ 2,881 acres (4.5 sq. miles)



**PLANNING &  
DEVELOPMENT  
DEPARTMENT**

	Super Neighborhood		Houston	
Pop. characteristics	2000	2017	2000	2017
Total population	2,759	4,169	1,953,631	2,267,336
Persons per sq. mile	613	926	3,166	3,394
<b>Age of Population</b>				
Under 5 years	7%	7%	8%	8%
5- 17 years	19%	13%	19%	17%
18- 64 years	64%	68%	64%	65%
65 and over	10%	12%	9%	10%
<b>Ethnicity</b>				
Non Hispanic Whites	22%	16%	31%	25%
Non Hispanic Blacks	12%	23%	25%	22%
Hispanics	65%	61%	37%	44%
Non Hispanic Asians	1%	0%	6%	7%
Non Hispanic Others	0%	0%	1%	2%
<b>Income</b>				
Under \$25,000	34%	25%	33%	26%
\$25,000 to \$49,999	31%	30%	31%	25%
\$50,000 to \$99,999	26%	34%	24%	26%
Over \$100,000	10%	11%	12%	23%
<b>Median Household Income</b>	\$36,755	\$43,088	\$36,616	\$49,399
<b>Educational Status</b>				
No Diploma	49%	33%	30%	22%
High School Diploma	30%	30%	20%	23%
Some College	18%	28%	23%	23%
Bachelor's or Higher	3%	3%	27%	32%
<b>Housing and Households</b>				
Total housing units	764	879	782,378	943,183
Occupied	94%	95%	92%	89%
Vacant	6%	5%	8%	11%
Total households	718	843	717,945	838,950
Family households	562	613	457,549	491,778
Median Housing Value	\$48,160	\$80,000	\$79,300	\$149,000



## El Dorado / Oates Praire: Land Use

Freeway	Commercial	Parks and Open Space
Rail Road	Office	Undeveloped
Super Neighborhood Boundary	Industrial	Agricultural Production
Single-family Residential	Public and Institutional	Open Water
Multi-family Residential	Transportation and Utilities	Unknown

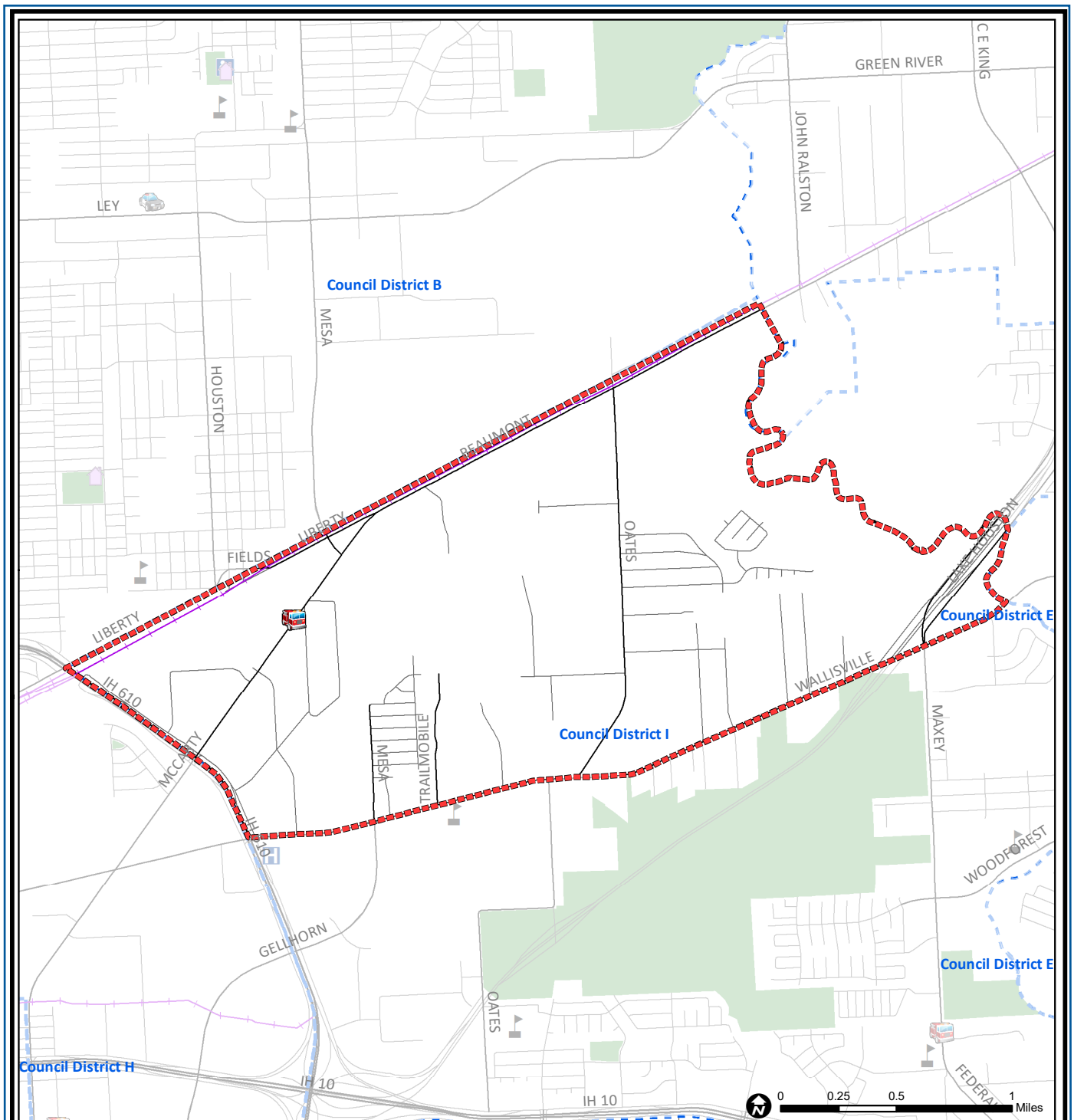
Source: City of Houston GIS Database,  
Harris County Appraisal District

Date: May 20, 2019

This map is made available for reference purposes only and should not be substituted for a survey product. The City of Houston will not accept liability of any kind in conjunction with its use.



**PLANNING &  
DEVELOPMENT  
DEPARTMENT**



## El Dorado / Oates Prairie: Public Facilities

Source: City of Houston GIS Database

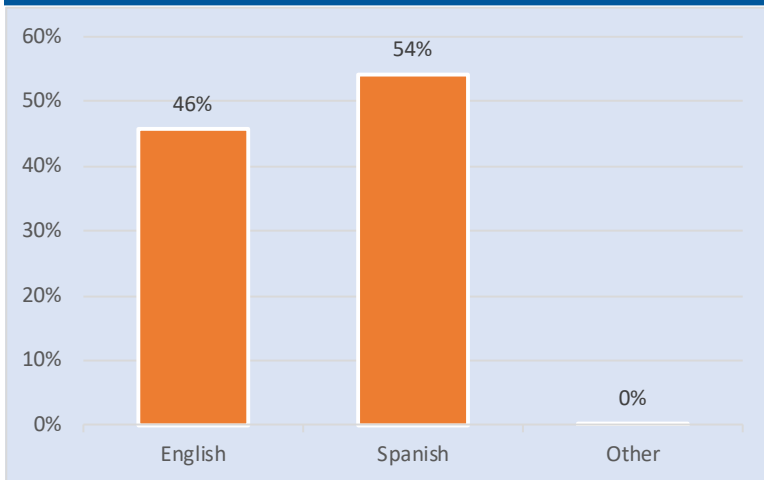
Date: May 2019

This map is made available for reference purposes only and should not be substituted for a survey product. The City of Houston will not accept liability of any kind in conjunction with its use.

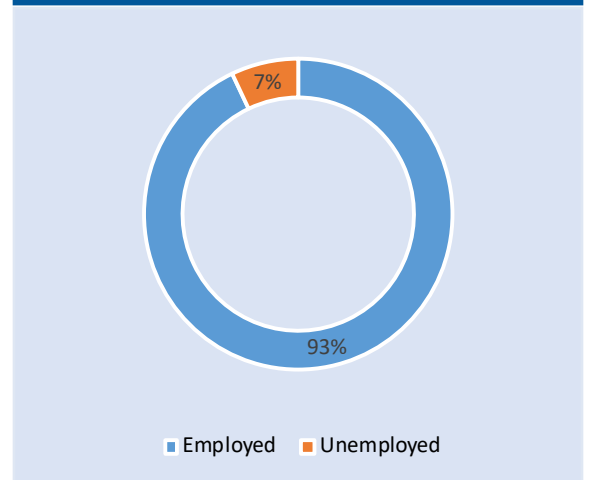


**PLANNING &  
DEVELOPMENT  
DEPARTMENT**

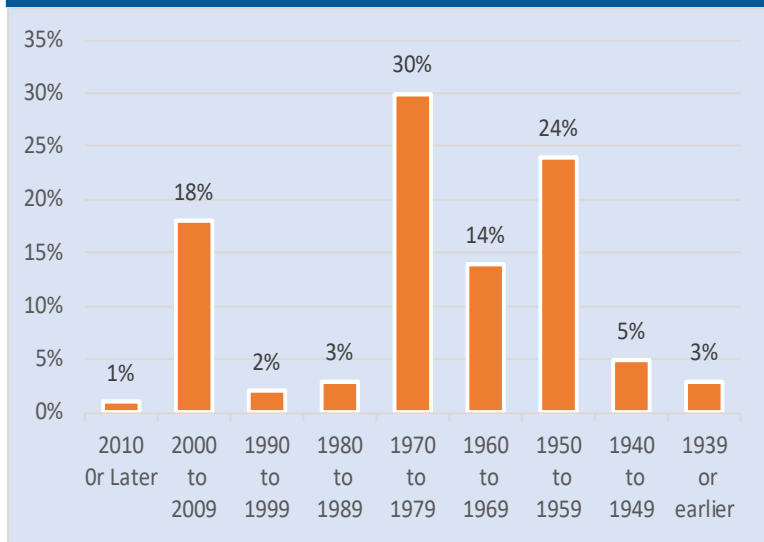
### Language Spoken at Home



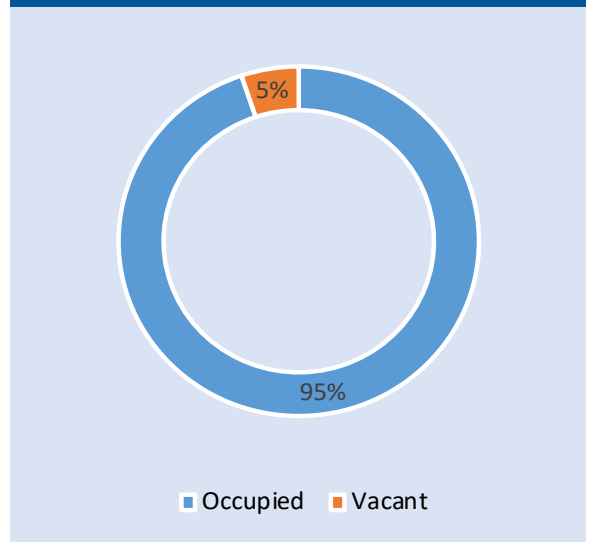
### Employment Status



### Housing Units by Year Built



### Housing Occupancy



Source: U.S. Census Bureau, 2000  
American Community Survey, 2013-2017 Estimates



**PLANNING &  
DEVELOPMENT  
DEPARTMENT**