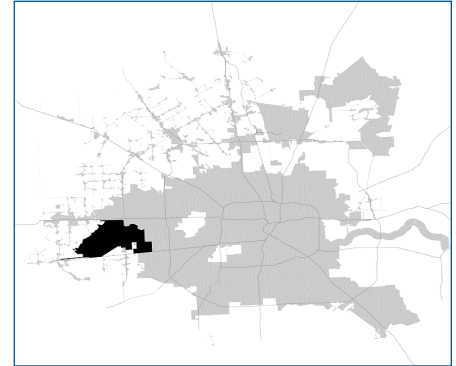


SUPER

Neighborhood

RESOURCE ASSESSMENT



	Super Neighborhood		Houston	
Pop. characteristics	2000	2017	2000	2017
Total population	40,013	75,236	1,953,631	2,267,336
Persons per sq. mile	1,356	2,559	3,166	3,394
Age of Population				
Under 5 years	7%	8%	8%	8%
5- 17 years	14%	15%	19%	17%
18- 64 years	72%	67%	64%	65%
65 and over	7%	10%	9%	10%
Ethnicity				
Non Hispanic Whites	54%	33%	31%	25%
Non Hispanic Blacks	14%	24%	25%	22%
Hispanics	16%	24%	37%	44%
Non Hispanic Asians	12%	16%	6%	7%
Non Hispanic Others	3%	3%	1%	2%
Income				
Under \$25,000	18%	18%	33%	26%
\$25,000 to \$49,999	33%	21%	31%	25%
\$50,000 to \$99,999	31%	29%	24%	26%
Over \$100,000	17%	32%	12%	23%
Median Household Income	\$50,857	\$73,874	\$36,616	\$49,399
Educational Status				
No Diploma	7%	7%	30%	22%
High School Diploma	14%	15%	20%	23%
Some College	33%	27%	23%	23%
Bachelor's or Higher	46%	51%	27%	32%
Housing and Households				
Total housing units	21,312	35,650	782,378	943,183
Occupied	88%	91%	92%	89%
Vacant	12%	9%	8%	11%
Total households	18,727	32,395	717,945	838,950
Family households	9,906	18,832	457,549	491,778
Median Housing Value	\$124,196	\$289,609	\$79,300	\$149,000

Description

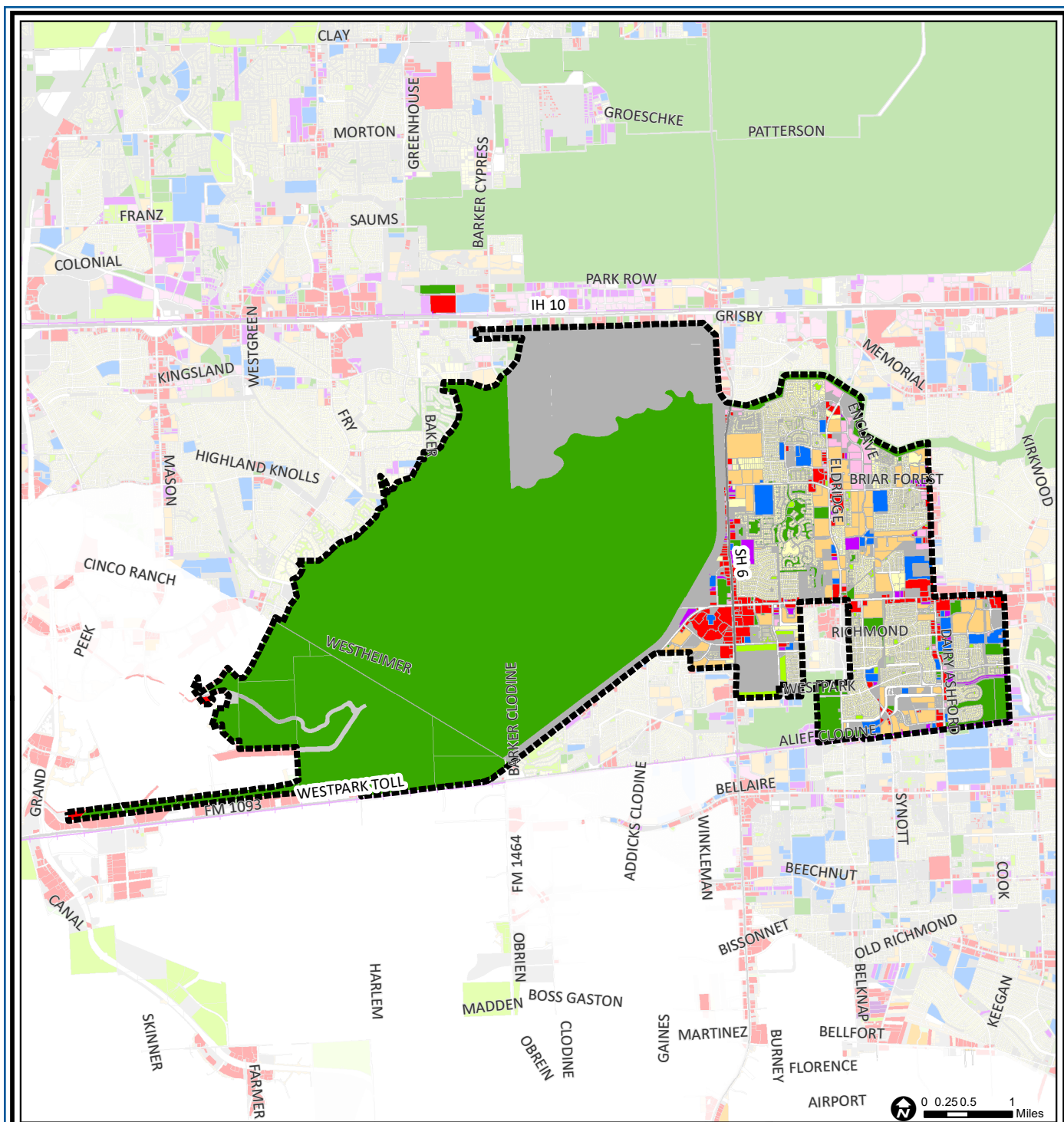
Eldridge West Oaks is located south of Interstate 10 in the western part of the City and includes West Oaks Mall, Barker Reservoir, and a developing area centered by Eldridge Parkway. Barker Reservoir covers over half of the area. The remaining half is a mix of multi-family and single-family residential uses and vacant land. A number of single-family gated communities, built around man-made lakes, have been developed in the area. The area is served by Houston Independent School District north of Westheimer Road and by Alief Independent School District on the south side.

Highlights

- ✓ Houston City Council Districts F & G
- ✓ Houston Independent School District
- ✓ Alief Independent School District
- ✓ Katy Independent School District
- ✓ Spring Branch Independent School District
- ✓ Fort Bend Independent School District
- ✓ 7 Police beats (includes bordering beats)
- ✓ 18,871 acres (29.5 sq. miles)



**PLANNING &
DEVELOPMENT
DEPARTMENT**



Eldridge / West Oaks: Land Use

	Freeway		Commercial		Parks and Open Space
	Rail Road		Office		Undeveloped
	Super Neighborhood Boundary		Industrial		Agricultural Production
	Single-family Residential		Public and Institutional		Open Water
	Multi-family Residential		Transportation and Utilities		Unknown

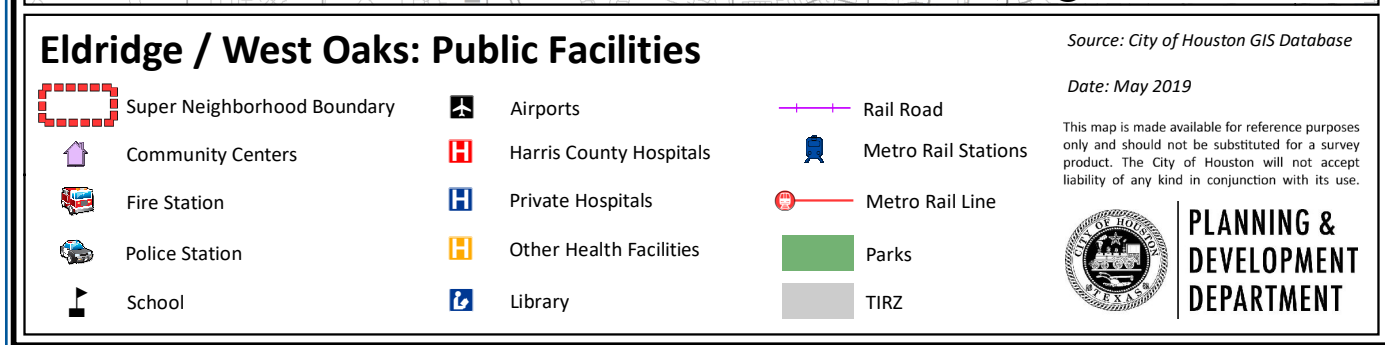
Source: City of Houston GIS Database,
Harris County Appraisal District

Date: May 20, 2019

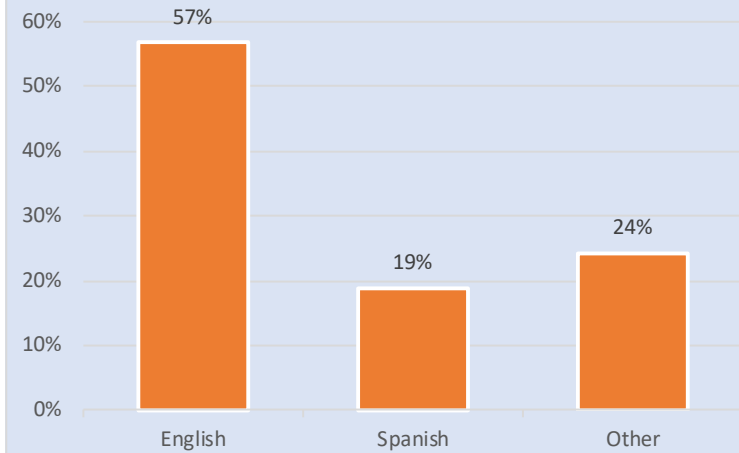
This map is made available for reference purposes only and should not be substituted for a survey product. The City of Houston will not accept liability of any kind in conjunction with its use.



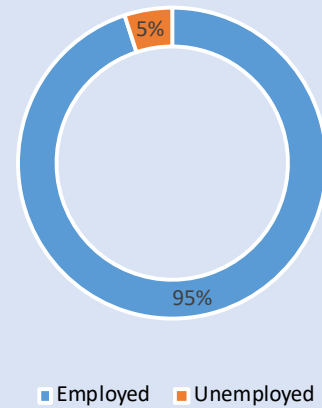
**PLANNING &
DEVELOPMENT
DEPARTMENT**



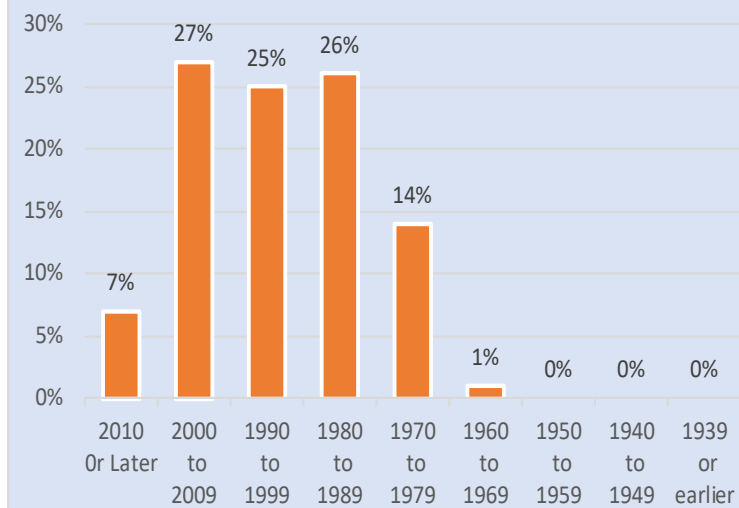
Language Spoken at Home



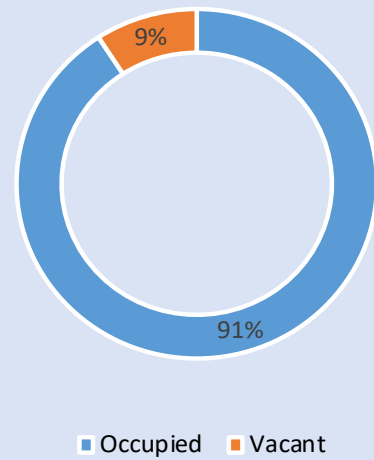
Employment Status



Housing Units by Year Built



Housing Occupancy



Source: U.S. Census Bureau, 2000
American Community Survey, 2013-2017 Estimates



**PLANNING &
DEVELOPMENT
DEPARTMENT**