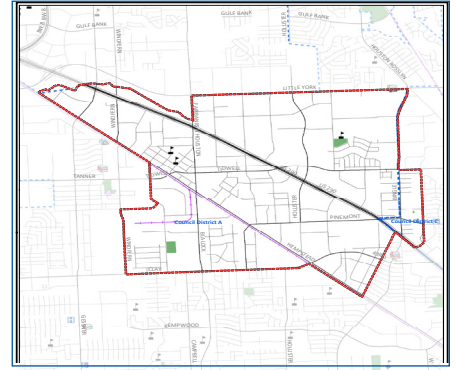


# SUPER

## Neighborhood

### RESOURCE ASSESSMENT



	Super Neighborhood		Houston	
Pop. characteristics	2000	2017	2000	2017
Total population	12,262	19,082	1,953,631	2,267,336
Persons per sq. mile	1,801	2,762	3,166	3,394
<b>Age of Population</b>				
Under 5 years	8%	9%	8%	8%
5- 17 years	16%	18%	19%	17%
18- 64 years	71%	69%	64%	65%
65 and over	5%	4%	9%	10%
<b>Ethnicity</b>				
Non Hispanic Whites	39%	16%	31%	25%
Non Hispanic Blacks	21%	18%	25%	22%
Hispanics	35%	63%	37%	44%
Non Hispanic Asians	4%	2%	6%	7%
Non Hispanic Others	1%	1%	1%	2%
<b>Income</b>				
Under \$25,000	33%	28%	33%	26%
\$25,000 to \$49,999	38%	39%	31%	25%
\$50,000 to \$99,999	25%	22%	24%	26%
Over \$100,000	4%	11%	12%	23%
<b>Median Household Income</b>	\$35,788	\$37,286	\$36,616	\$49,399
<b>Educational Status</b>				
No Diploma	24%	27%	30%	22%
High School Diploma	29%	27%	20%	23%
Some College	29%	29%	23%	23%
Bachelor's or Higher	19%	17%	27%	32%
<b>Housing and Households</b>				
Total housing units	6,166	8,050	782,378	943,183
Occupied	89%	93%	92%	89%
Vacant	11%	7%	8%	11%
Total households	5,499	7,482	717,945	838,950
Family households	2,844	4,160	457,549	491,778
Median Housing Value	\$46,444	\$139,267	\$79,300	\$149,000

### Description

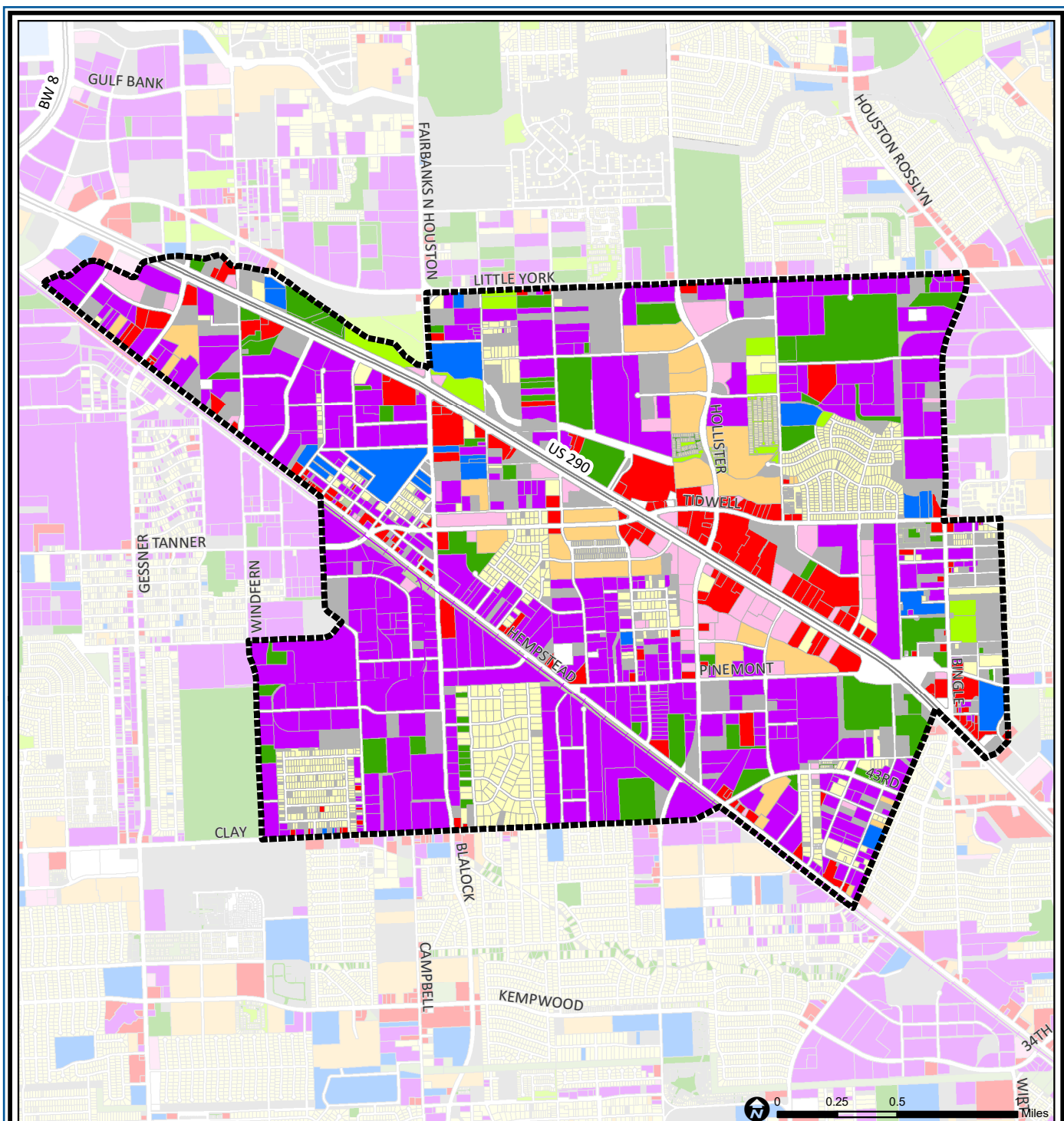
Fairbanks Northwest Crossing is a combination of rural land use and scattered housing and high density urban development that followed the construction of the Northwest Freeway. Many garden apartment complexes are scattered through and around the edge of the Northwest Crossing office and retail development. Prior to the opening of the freeway which bisects the area, access to Houston was provided by the Hempstead Highway, which still is lined with a combination of aging retail developments, light industrial facilities and agricultural service businesses.

### Highlights

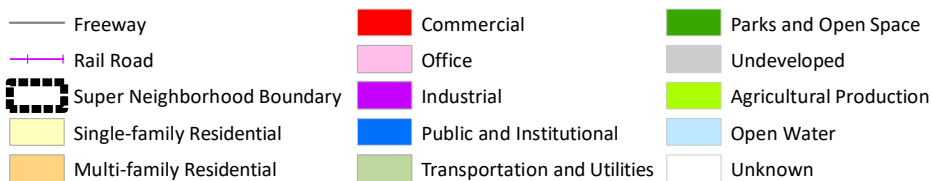
- ✓ Houston City Council Districts A & C
- ✓ Cypress-Fairbanks Independent School District
- ✓ Houston Independent School District
- ✓ Aldine Independent School District
- ✓ Spring Branch Independent School District
- ✓ 4 Police beats (includes bordering beats)
- ✓ 4,361 acres (6.81 sq. miles)



**PLANNING &  
DEVELOPMENT  
DEPARTMENT**



## Fairbanks / Northwest Crossing: Land Use



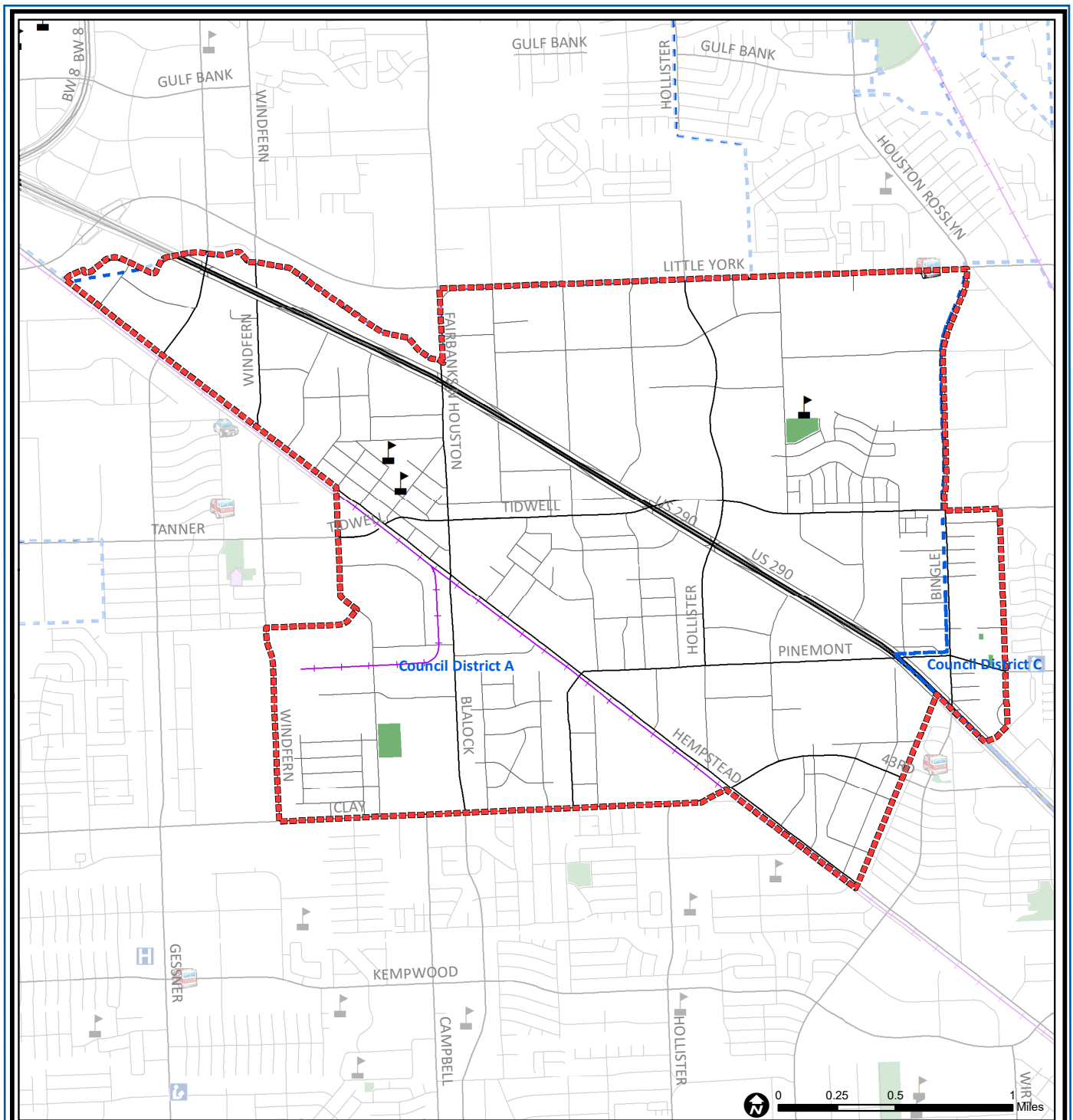
Source: City of Houston GIS Database,  
Harris County Appraisal District

Date: May 20, 2019

This map is made available for reference purposes only and should not be substituted for a survey product. The City of Houston will not accept liability of any kind in conjunction with its use.



**PLANNING &  
DEVELOPMENT  
DEPARTMENT**



## Fairbanks / Northwest Crossing: Public Facilities

Source: City of Houston GIS Database

Date: June 2019

This map is made available for reference purposes only and should not be substituted for a survey product. The City of Houston will not accept liability of any kind in conjunction with its use.



**PLANNING &  
DEVELOPMENT  
DEPARTMENT**

Super Neighborhood Boundary

Community Centers

Fire Station

Police Station

School

Airports

Harris County Hospitals

Private Hospitals

Other Health Facilities

Library

Rail Road

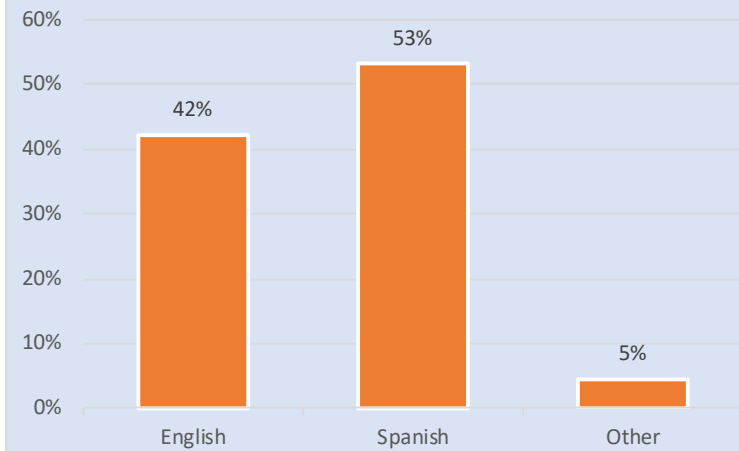
Metro Rail Stations

Metro Rail Line

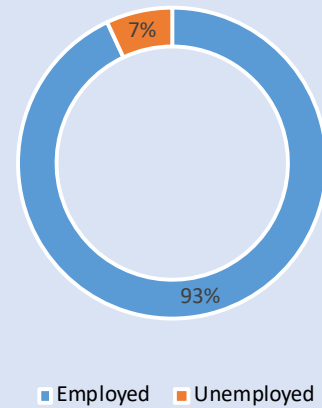
Parks

TIRZ

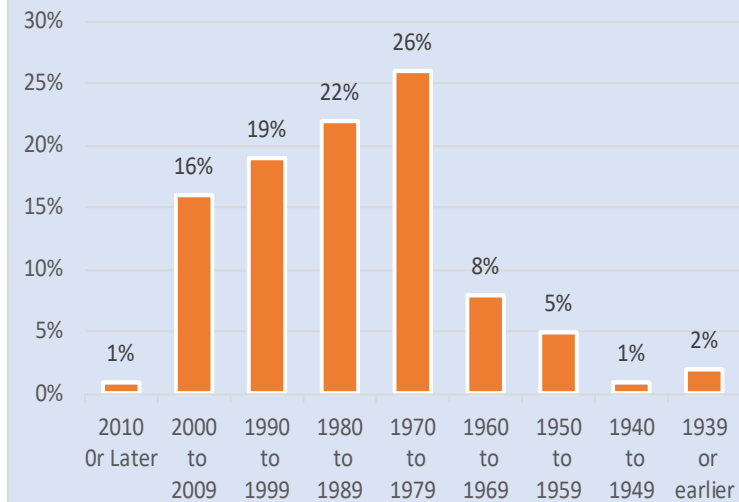
### Language Spoken at Home



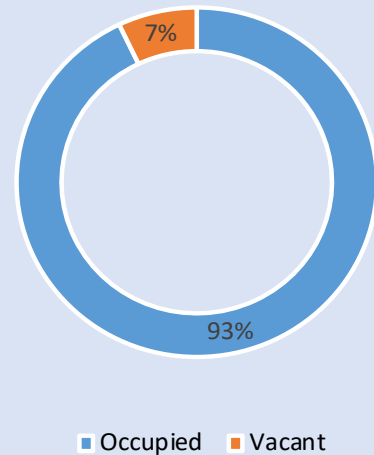
### Employment Status



### Housing Units by Year Built



### Housing Occupancy



Source: U.S. Census Bureau, 2000  
American Community Survey, 2013-2017 Estimates



**PLANNING &  
DEVELOPMENT  
DEPARTMENT**