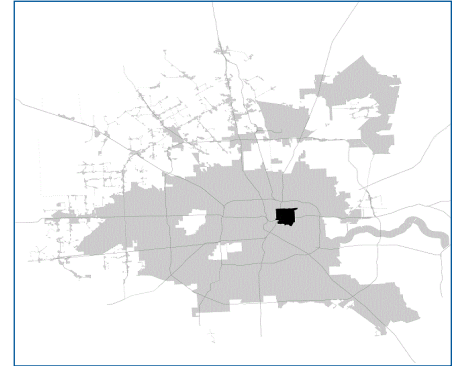


SUPER

Neighborhood

RESOURCE ASSESSMENT



	Super Neighborhood		Houston	
Pop. characteristics	2000	2017	2000	2017
Total population	22,211	20,491	1,953,631	2,267,336
Persons per sq. mile	4,451	4,108	3,166	3,394
Age of Population				
Under 5 years	9%	8%	8%	8%
5- 17 years	24%	20%	19%	17%
18- 64 years	55%	63%	64%	65%
65 and over	12%	9%	9%	10%
Ethnicity				
Non Hispanic Whites	1%	4%	31%	25%
Non Hispanic Blacks	63%	45%	25%	22%
Hispanics	35%	50%	37%	44%
Non Hispanic Asians	0%	0%	6%	7%
Non Hispanic Others	0%	1%	1%	2%
Income				
Under \$25,000	67%	54%	33%	26%
\$25,000 to \$49,999	21%	24%	31%	25%
\$50,000 to \$99,999	10%	15%	24%	26%
Over \$100,000	2%	7%	12%	23%
Median Household Income	\$14,720	\$25,489	\$36,616	\$49,399
Educational Status				
No Diploma	58%	36%	30%	22%
High School Diploma	24%	31%	20%	23%
Some College	14%	22%	23%	23%
Bachelor's or Higher	4%	11%	27%	32%
Housing and Households				
Total housing units	8,756	8,461	782,378	943,183
Occupied	87%	86%	92%	89%
Vacant	13%	14%	8%	11%
Total households	7,591	7,253	717,945	838,950
Family households	4,927	4,273	457,549	491,778
Median Housing Value	\$28,977	\$79,784	\$79,300	\$149,000

Description

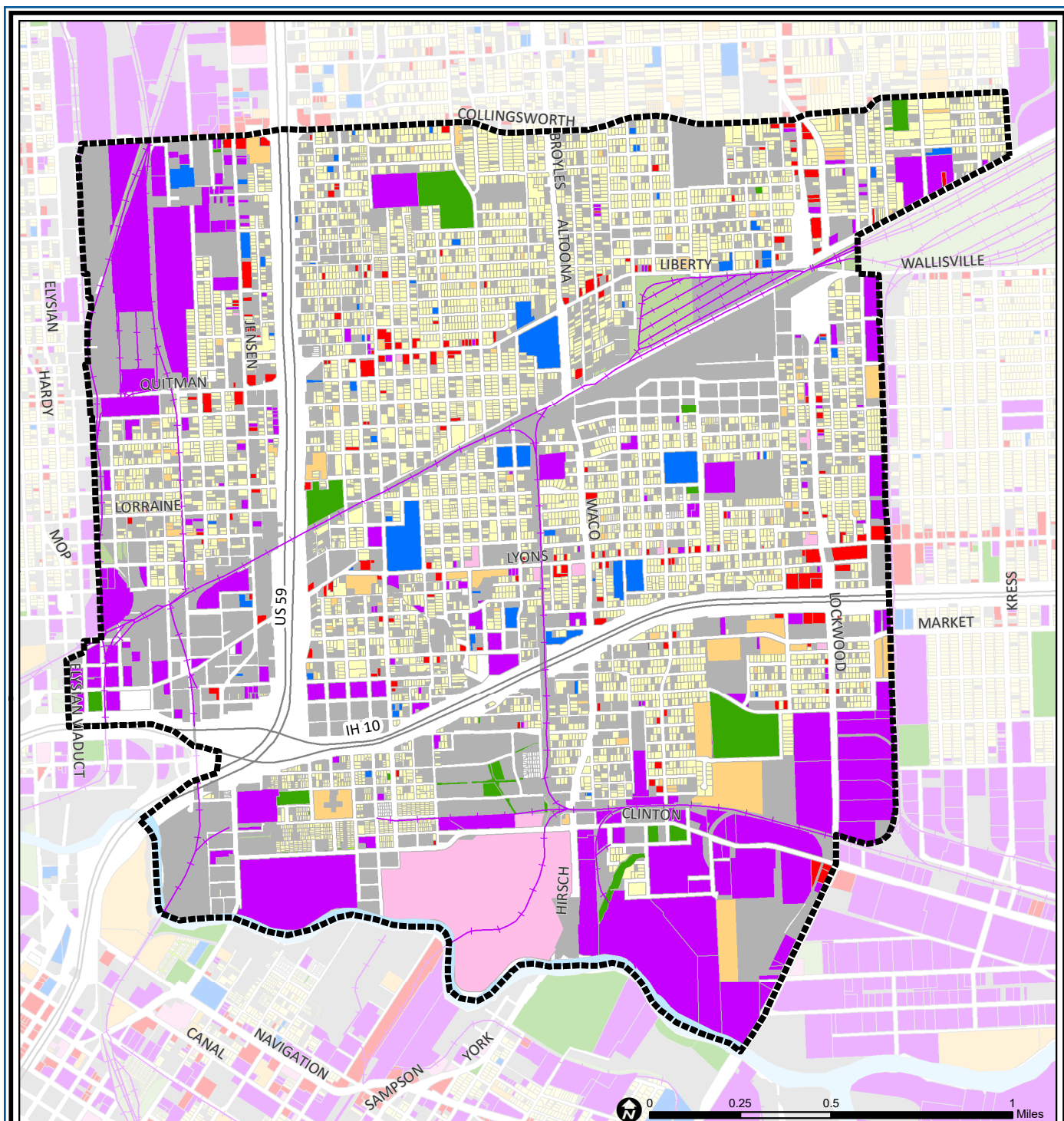
Greater Fifth Ward has its origins on the north bank of Buffalo Bayou across from the original town site for Houston. Originally a multi-racial community, Fifth Ward quickly became one of the centers of Houston's African-American community. Its commercial streets, especially Lyons and Jensen, provided retail outlets and entertainment for the residents of the small wood frame homes that predominated in the area. Small clusters of brick homes identified a small middle class population. Many original, sub-standard housing units have been demolished over the past two decades, but a recent revival of commercial activity and home construction is now filling these empty lots.

Highlights

- ✓ Houston City Council Districts B & H
- ✓ Houston Independent School District
- ✓ 6 Police beats (includes bordering beats)
- ✓ 3,192 acres (4.99 sq. miles)



**PLANNING &
DEVELOPMENT
DEPARTMENT**



Greater Fifth Ward: Land Use

Freeway	Commercial	Parks and Open Space
Rail Road	Office	Undeveloped
Super Neighborhood Boundary	Industrial	Agricultural Production
Single-family Residential	Public and Institutional	Open Water
Multi-family Residential	Transportation and Utilities	Unknown

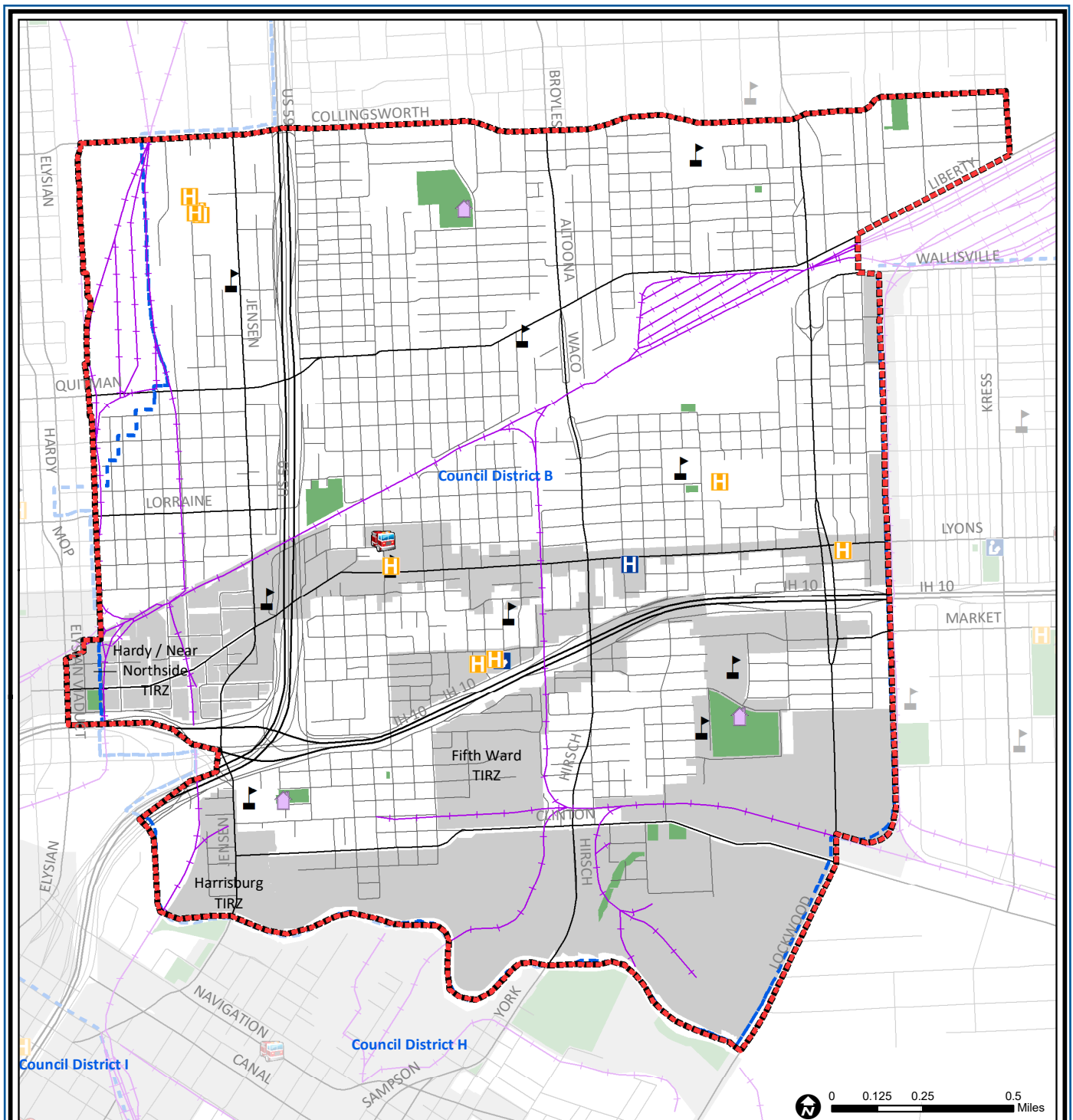
Source: City of Houston GIS Database,
Harris County Appraisal District

Date: May 20, 2019

This map is made available for reference purposes only and should not be substituted for a survey product. The City of Houston will not accept liability of any kind in conjunction with its use.



**PLANNING &
DEVELOPMENT
DEPARTMENT**



Greater Fifth Ward: Public Facilities

- Super Neighborhood Boundary
- Community Centers
- Fire Station
- Police Station
- School

- Airports
- Harris County Hospitals
- Private Hospitals
- Other Health Facilities
- Library

- Rail Road
- Metro Rail Stations
- Metro Rail Line
- Parks
- TIRZ

Source: City of Houston GIS Database

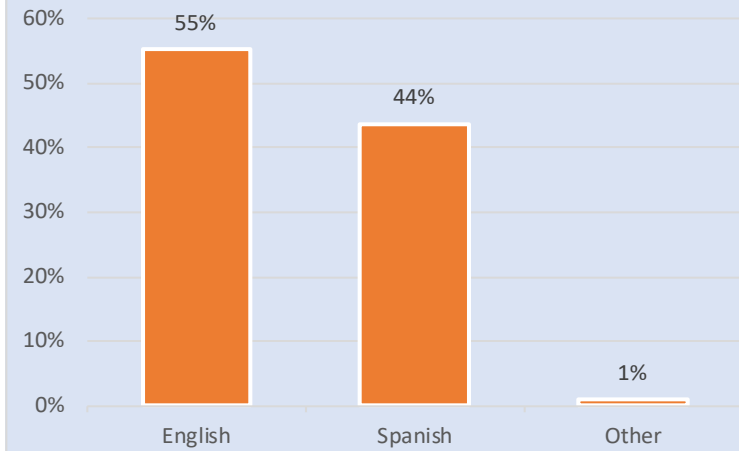
Date: May 2019

This map is made available for reference purposes only and should not be substituted for a survey product. The City of Houston will not accept liability of any kind in conjunction with its use.

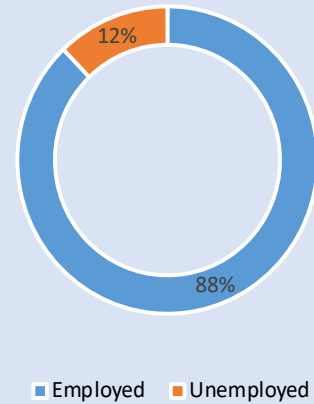


**PLANNING &
DEVELOPMENT
DEPARTMENT**

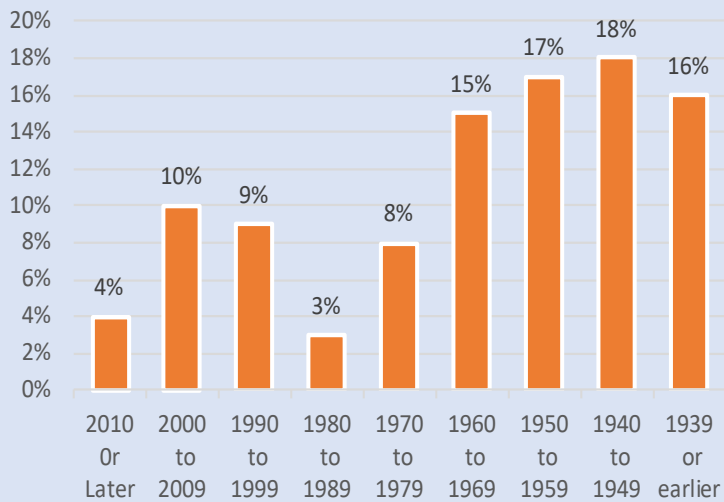
Language Spoken at Home



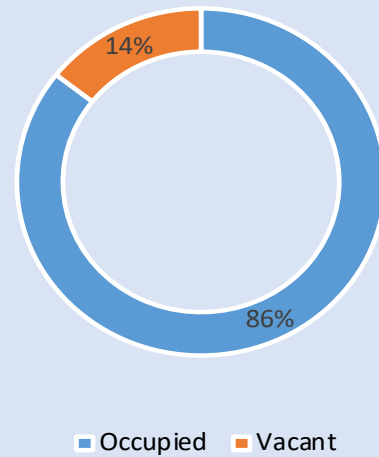
Employment Status



Housing Units by Year Built



Housing Occupancy



Source: U.S. Census Bureau, 2000
American Community Survey, 2013-2017 Estimates



**PLANNING &
DEVELOPMENT
DEPARTMENT**