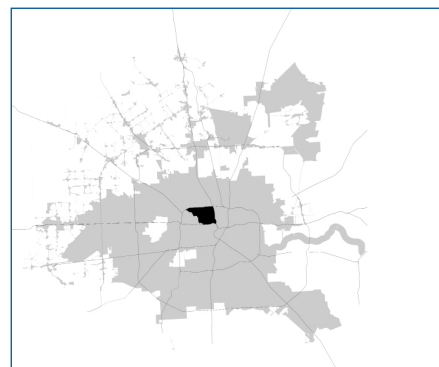


SUPER

Neighborhood

RESOURCE ASSESSMENT



	Super Neighborhood		Houston	
Pop. characteristics	2000	2017	2000	2017
Total population	41,486	43,154	1,953,631	2,267,336
Persons per sq. mile	5,667	5,899	3,166	3,394
Age of Population				
Under 5 years	7%	6%	8%	8%
5- 17 years	16%	10%	19%	17%
18- 64 years	68%	74%	64%	65%
65 and over	9%	10%	9%	10%
Ethnicity				
Non Hispanic Whites	42%	63%	31%	25%
Non Hispanic Blacks	4%	2%	25%	22%
Hispanics	53%	29%	37%	44%
Non Hispanic Asians	1%	4%	6%	7%
Non Hispanic Others	1%	2%	1%	2%
Income				
Under \$25,000	30%	14%	33%	26%
\$25,000 to \$49,999	30%	12%	31%	25%
\$50,000 to \$99,999	28%	24%	24%	26%
Over \$100,000	12%	50%	12%	23%
Median Household Income	\$41,576	\$104,870	\$36,616	\$49,399
Educational Status				
No Diploma	34%	9%	30%	22%
High School Diploma	17%	12%	20%	23%
Some College	21%	18%	23%	23%
Bachelor's or Higher	28%	61%	27%	32%
Housing and Households				
Total housing units	18,547	22,153	782,378	943,183
Occupied	91%	90%	92%	89%
Vacant	9%	10%	8%	11%
Total households	16,891	20,045	717,945	838,950
Family households	8,765	10,087	457,549	491,778
Median Housing Value	\$118,758	\$435,891	\$79,300	\$149,000

Description

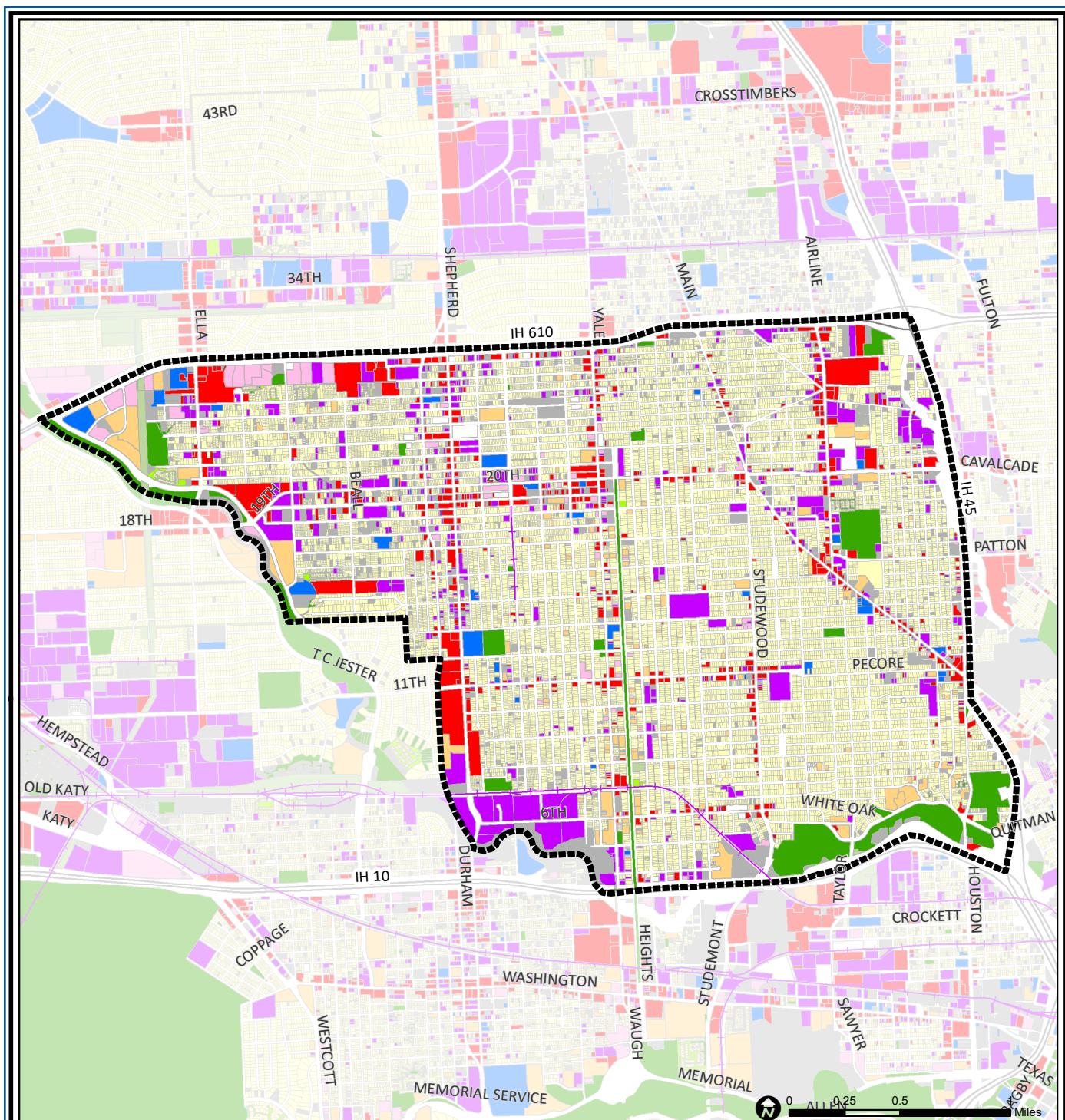
Greater Heights centers on the old suburban town of Houston Heights which consolidated with Houston in 1919. It still retains its ban on the sale of alcoholic beverages. This has always been a community of stately mansions, comfortable bungalows and modest frame homes. Only a small number of apartment complexes replaced homes after World War II, and area construction has been of expensive townhouses and Victorian style mansions. The old commercial areas have had only a modest revival, but the many bungalows have become some of the most sought after in the city. Few of the community's oak lined streets is without a lovingly restored seventy-five-year old home, or a brand new home in a compatible style.

Highlights

- ✓ Houston City Council Districts C & H
- ✓ Houston Independent School District
- ✓ 10 Police beats (includes bordering beats)
- ✓ 4,682 acres (7.32 sq. miles)



**PLANNING &
DEVELOPMENT
DEPARTMENT**



Greater Heights: Land Use

Freeway	Commercial	Parks and Open Space
Rail Road	Office	Undeveloped
Super Neighborhood Boundary	Industrial	Agricultural Production
Single-family Residential	Public and Institutional	Open Water
Multi-family Residential	Transportation and Utilities	Unknown

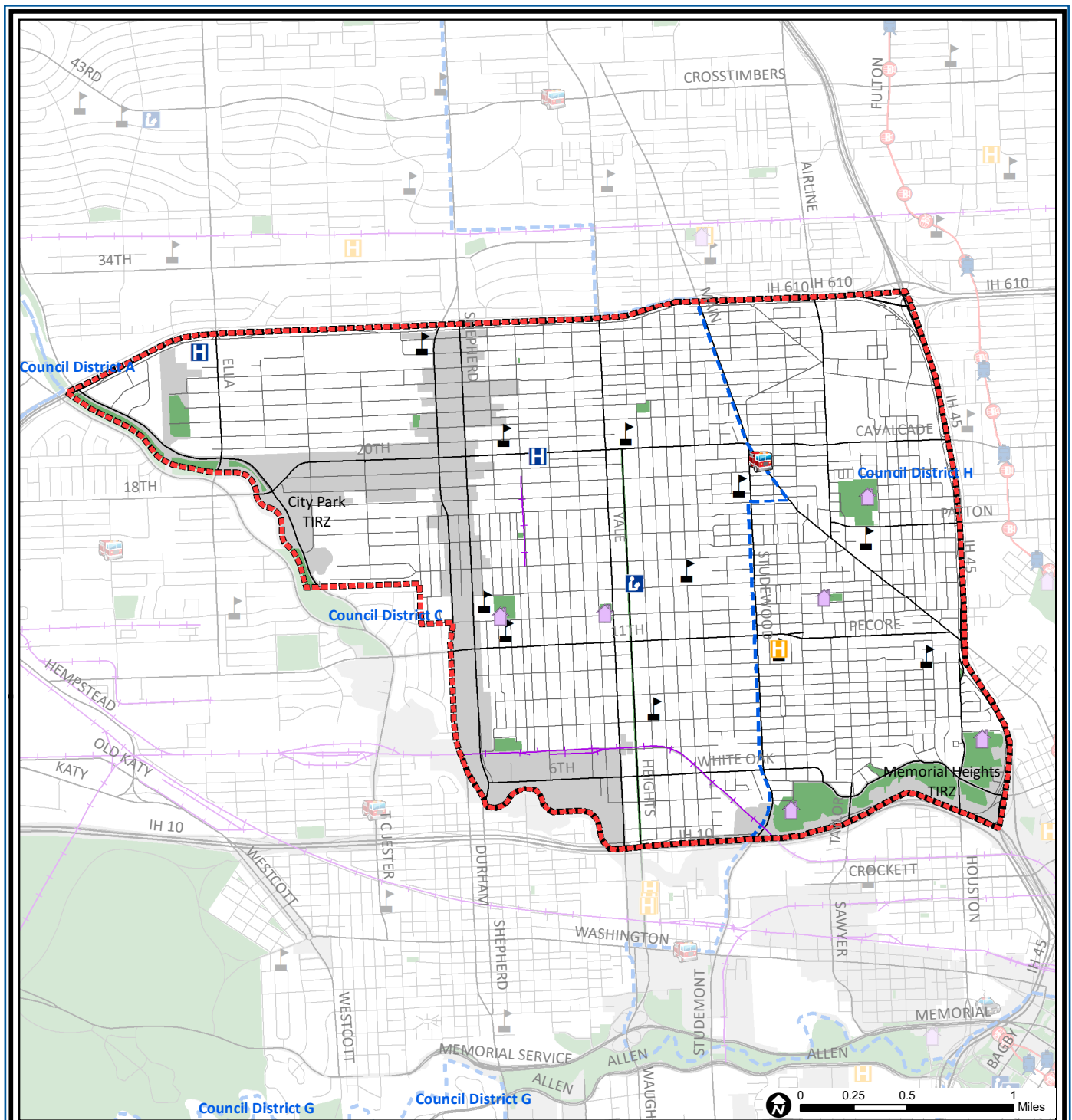
Source: City of Houston GIS Database,
Harris County Appraisal District

Date: June 13, 2019

This map is made available for reference purposes only and should not be substituted for a survey product. The City of Houston will not accept liability of any kind in conjunction with its use.



**PLANNING &
DEVELOPMENT
DEPARTMENT**



Greater Heights: Public Facilities

	Super Neighborhood Boundary		Airports		Rail Road
	Community Centers		Harris County Hospitals		Metro Rail Stations
	Fire Station		Private Hospitals		Metro Rail Line
	Police Station		Other Health Facilities		Parks
	School		Library		TIRZ

Source: City of Houston GIS Database

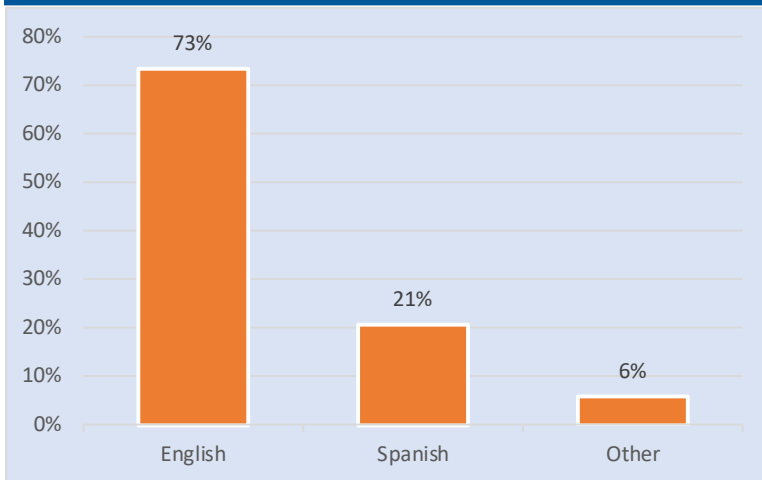
Date: May 2019

This map is made available for reference purposes only and should not be substituted for a survey product. The City of Houston will not accept liability of any kind in conjunction with its use.

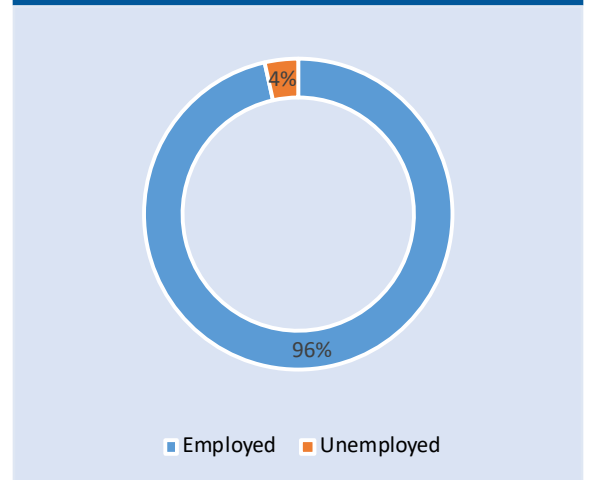


**PLANNING &
DEVELOPMENT
DEPARTMENT**

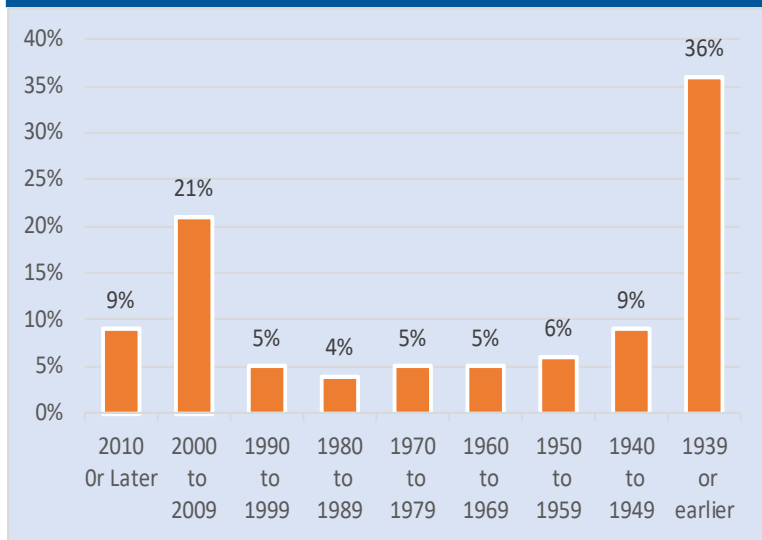
Language Spoken at Home



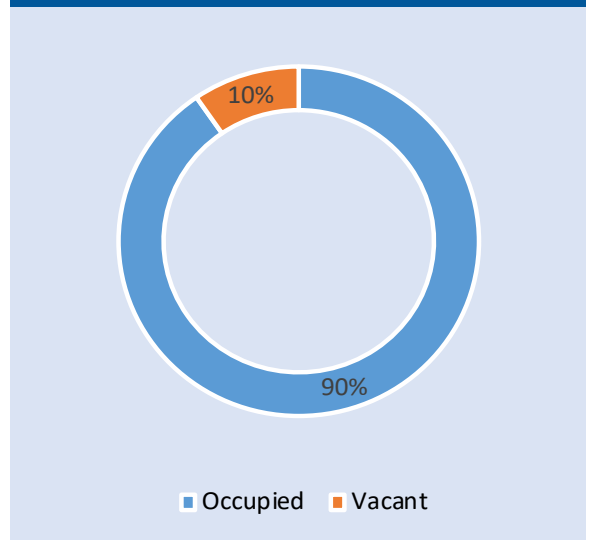
Employment Status



Housing Units by Year Built



Housing Occupancy



Source: U.S. Census Bureau, 2000
American Community Survey, 2013-2017 Estimates



**PLANNING &
DEVELOPMENT
DEPARTMENT**