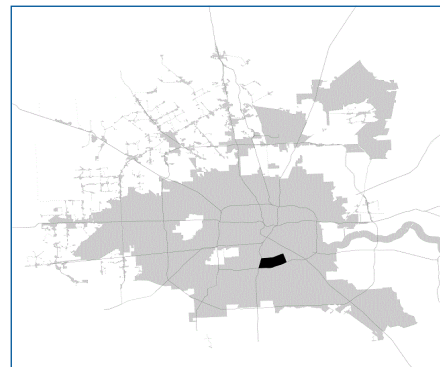


# SUPER

## Neighborhood

### RESOURCE ASSESSMENT



	Super Neighborhood		Houston	
Pop. characteristics	2000	2017	2000	2017
Total population	19,523	19,398	1,953,631	2,267,336
Persons per sq. mile	4,509	4,477	3,166	3,394
<b>Age of Population</b>				
Under 5 years	8%	8%	8%	8%
5- 17 years	21%	17%	19%	17%
18- 64 years	57%	61%	64%	65%
65 and over	14%	14%	9%	10%
<b>Ethnicity</b>				
Non Hispanic Whites	2%	4%	31%	25%
Non Hispanic Blacks	84%	80%	25%	22%
Hispanics	13%	15%	37%	44%
Non Hispanic Asians	1%	0%	6%	7%
Non Hispanic Others	1%	1%	1%	2%
<b>Income</b>				
Under \$25,000	58%	44%	33%	26%
\$25,000 to \$49,999	26%	26%	31%	25%
\$50,000 to \$99,999	15%	23%	24%	26%
Over \$100,000	2%	7%	12%	23%
<b>Median Household Income</b>	\$20,586	\$32,118	\$36,616	\$49,399
<b>Educational Status</b>				
No Diploma	38%	21%	30%	22%
High School Diploma	29%	34%	20%	23%
Some College	23%	31%	23%	23%
Bachelor's or Higher	9%	14%	27%	32%
<b>Housing and Households</b>				
Total housing units	7,805	8,809	782,378	943,183
Occupied	90%	86%	92%	89%
Vacant	10%	14%	8%	11%
Total households	7,036	7,588	717,945	838,950
Family households	4,735	4,095	457,549	491,778
Median Housing Value	\$38,114	\$88,063	\$79,300	\$149,000

#### Description

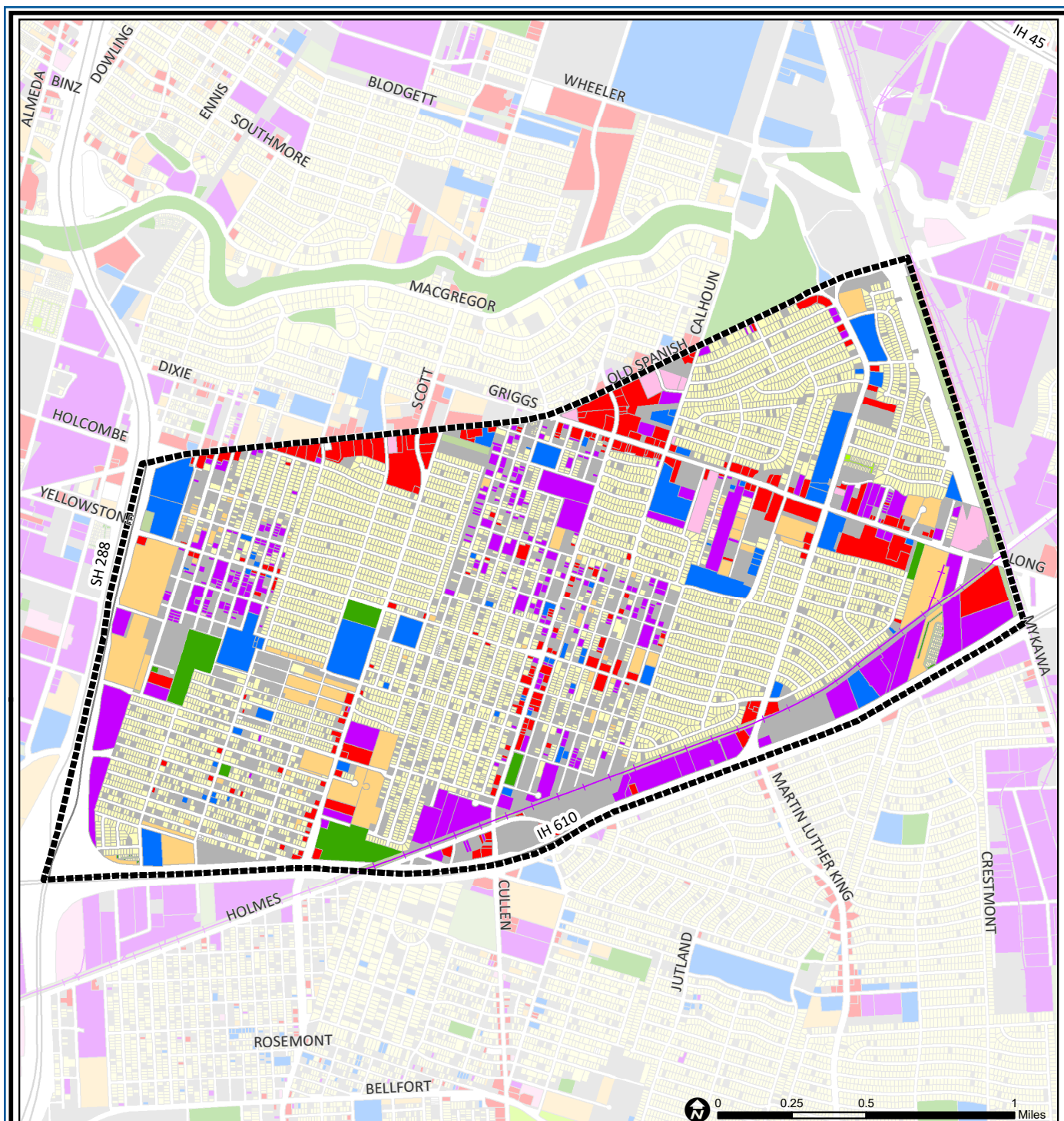
Greater OST/South Union is a collection of neighborhoods in south central Houston inside Loop 610. Most of the homes in this community were built just after World War II. Many of these small homes have been converted to commercial use, especially along Martin Luther King Boulevard. Other areas, such as LaSalette Place, remain deed restricted and well maintained. One small portion of Riverside Terrace is included in the community immediately south of MacGregor Park. Commercial development has revived along Old Spanish Trail, and the Shrine of the Black Madonna church has purchased and redeveloped a number of deteriorated properties near its sanctuary. In addition, new home construction is occurring in various locations throughout the area.

#### Highlights

- ✓ Houston City Council District D
- ✓ Houston Independent School District
- ✓ 5 Police beats (includes bordering beats)
- ✓ 2,773 acres (4.33 sq. miles)



**PLANNING &  
DEVELOPMENT  
DEPARTMENT**



## Greater OST / South Union: Land Use

Freeway	Commercial	Parks and Open Space
Rail Road	Office	Undeveloped
Super Neighborhood Boundary	Industrial	Agricultural Production
Single-family Residential	Public and Institutional	Open Water
Multi-family Residential	Transportation and Utilities	Unknown

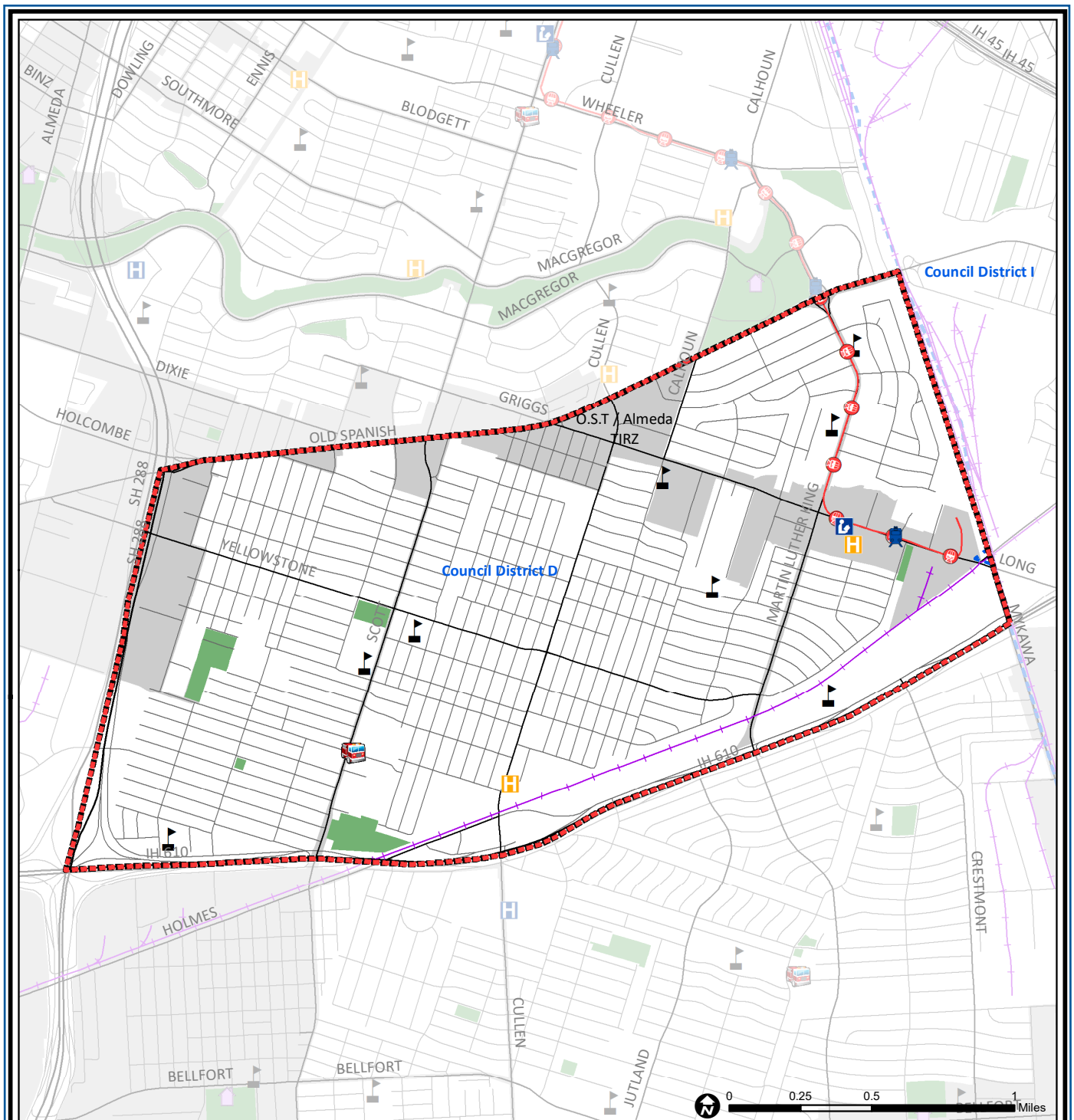
Source: City of Houston GIS Database,  
Harris County Appraisal District

Date: May 20, 2019

This map is made available for reference purposes only and should not be substituted for a survey product. The City of Houston will not accept liability of any kind in conjunction with its use.



**PLANNING &  
DEVELOPMENT  
DEPARTMENT**



## Greater OST / South Union: Public Facilities

- Super Neighborhood Boundary
- Community Centers
- Fire Station
- Police Station
- School

- Airports
- Harris County Hospitals
- Private Hospitals
- Other Health Facilities
- Library

- Rail Road
- Metro Rail Stations
- Metro Rail Line
- Parks
- TIRZ

Source: City of Houston GIS Database

Date: May 2019

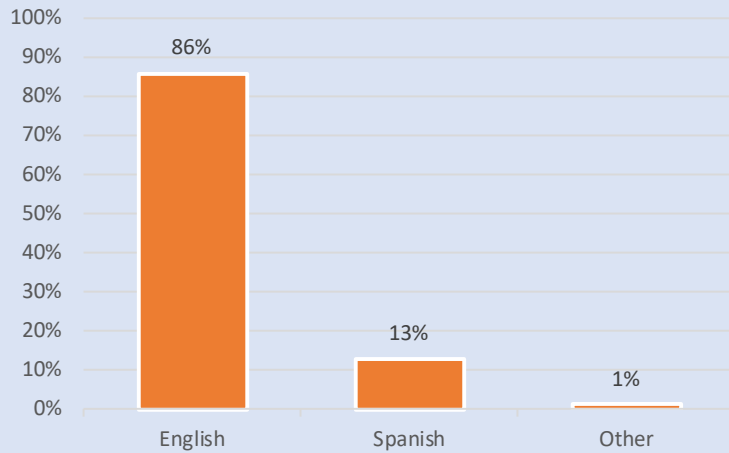
This map is made available for reference purposes only and should not be substituted for a survey product. The City of Houston will not accept liability of any kind in conjunction with its use.



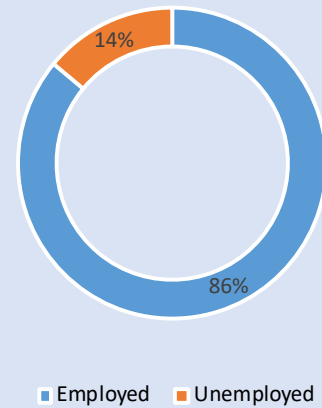
**PLANNING &  
DEVELOPMENT  
DEPARTMENT**



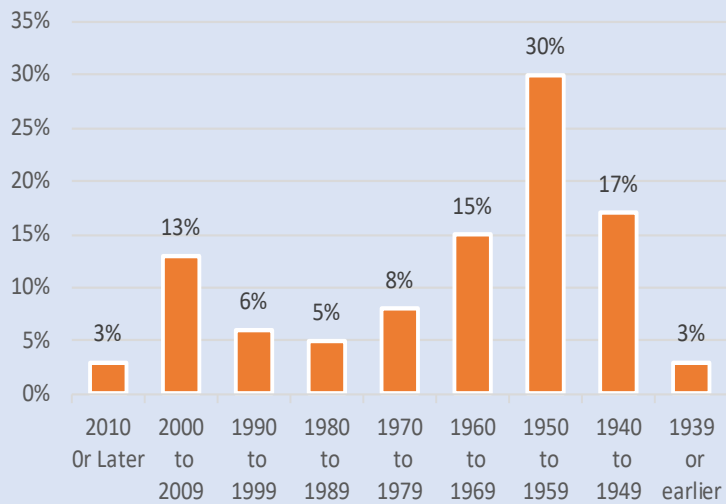
### Language Spoken at Home



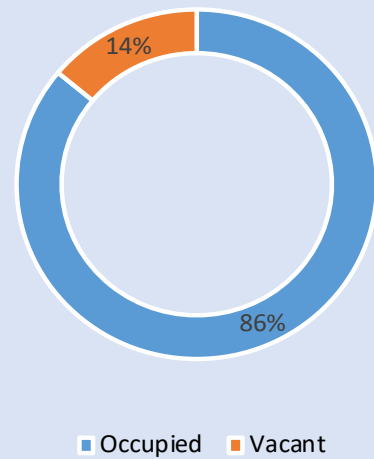
### Employment Status



### Housing Units by Year Built



### Housing Occupancy



Source: U.S. Census Bureau, 2000  
American Community Survey, 2013-2017 Estimates



**PLANNING &  
DEVELOPMENT  
DEPARTMENT**