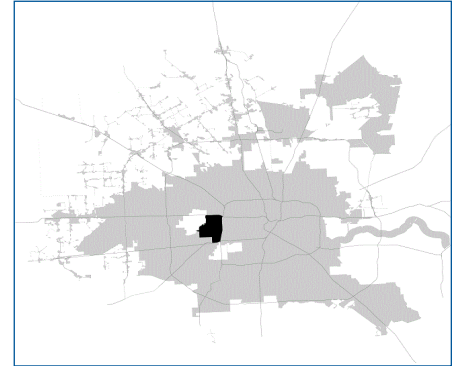


SUPER

Neighborhood

RESOURCE ASSESSMENT



Description

Greater Uptown is a large, mixed-use district located at the West Loop and traversed by Buffalo Bayou. It includes an office and retail complex centered on the Galleria which rivals the downtowns of many major cities. It also includes neighborhoods of expensive homes developed after World War II when this area was the city's western edge. The large subdivisions developed in the 1950s have now been almost entirely redeveloped. Apartments, condos, and expensive patio homes have replaced the modest, single-family homes on Augusta, Bering, Potomac and Nantucket.

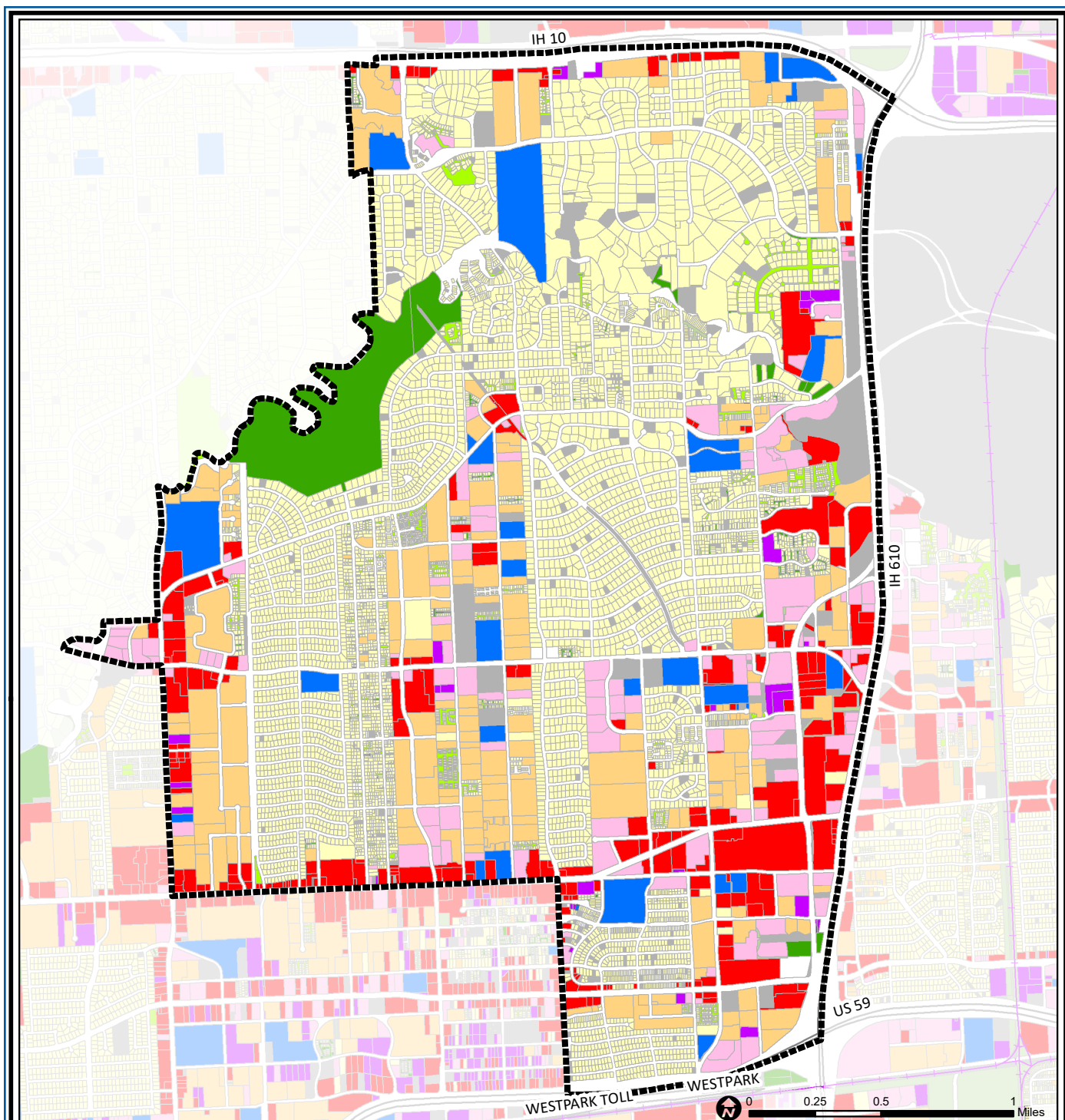
Highlights

- ✓ Houston City Council Districts G & J
- ✓ Houston Independent School District
- ✓ Spring Branch Independent School District
- ✓ 5 Police beats (includes bordering beats)
- ✓ 5,274 acres (8.2 sq. miles)



**PLANNING &
DEVELOPMENT
DEPARTMENT**

	Super Neighborhood		Houston	
Pop. characteristics	2000	2017	2000	2017
Total population	41,822	53,757	1,953,631	2,267,336
Persons per sq. mile	5,100	6,461	3,166	3,394
Age of Population				
Under 5 years	4%	6%	8%	8%
5- 17 years	8%	8%	19%	17%
18- 64 years	72%	68%	64%	65%
65 and over	15%	18%	9%	10%
Ethnicity				
Non Hispanic Whites	82%	64%	31%	25%
Non Hispanic Blacks	2%	5%	25%	22%
Hispanics	10%	16%	37%	44%
Non Hispanic Asians	5%	12%	6%	7%
Non Hispanic Others	2%	3%	1%	2%
Income				
Under \$25,000	15%	13%	33%	26%
\$25,000 to \$49,999	25%	14%	31%	25%
\$50,000 to \$99,999	30%	29%	24%	26%
Over \$100,000	31%	44%	12%	23%
Median Household Income	\$73,283	\$100,485	\$36,616	\$49,399
Educational Status				
No Diploma	3%	3%	30%	22%
High School Diploma	8%	8%	20%	23%
Some College	24%	16%	23%	23%
Bachelor's or Higher	64%	73%	27%	32%
Housing and Households				
Total housing units	26,708	32,236	782,378	943,183
Occupied	88%	86%	92%	89%
Vacant	12%	14%	8%	11%
Total households	23,604	27,629	717,945	838,950
Family households	9,489	12,130	457,549	491,778
Median Housing Value	\$249,776	\$584,595	\$79,300	\$149,000



Greater Uptown: Land Use

Freeway	Commercial	Parks and Open Space
Rail Road	Office	Undeveloped
Super Neighborhood Boundary	Industrial	Agricultural Production
Single-family Residential	Public and Institutional	Open Water
Multi-family Residential	Transportation and Utilities	Unknown

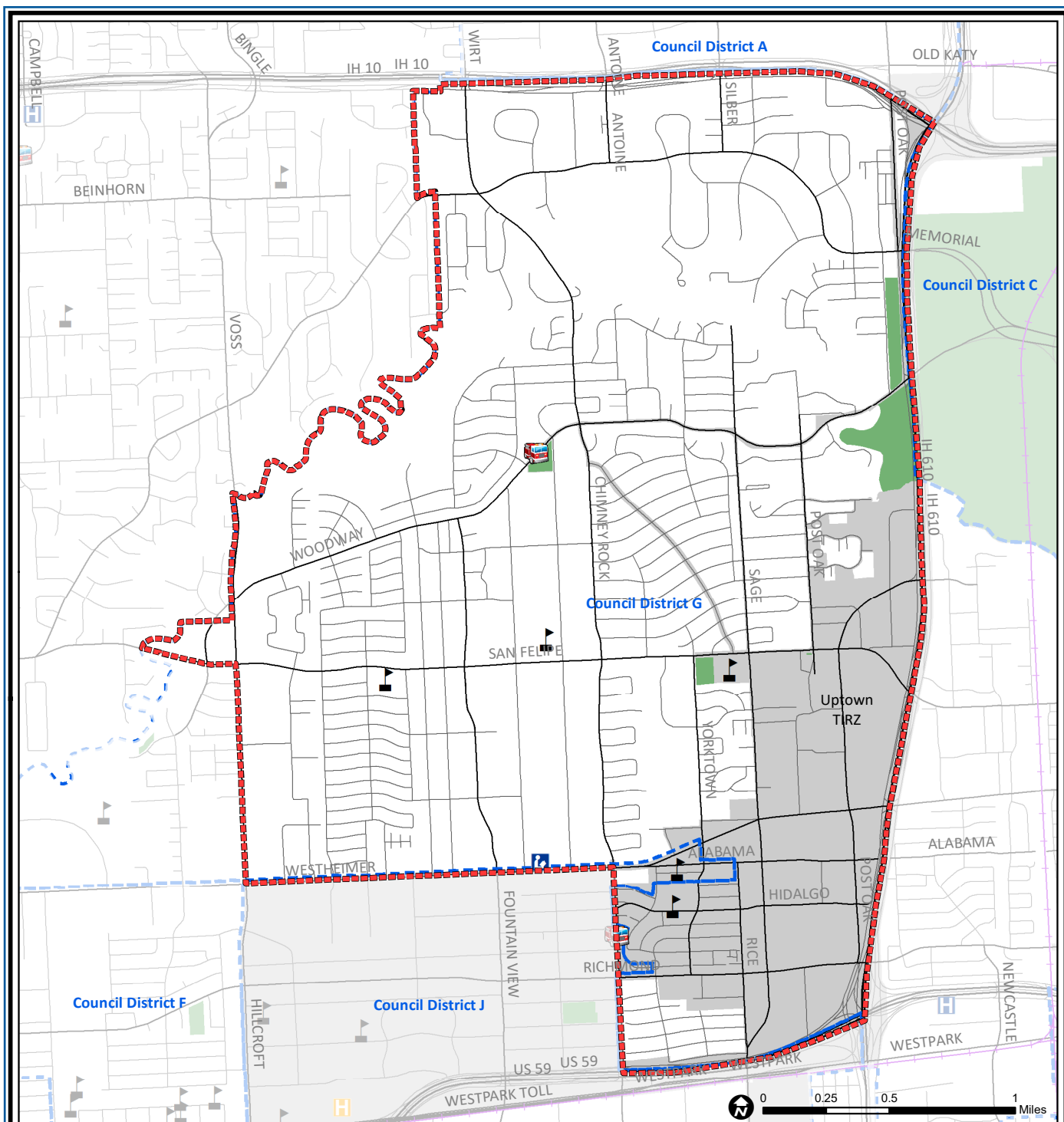
Source: City of Houston GIS Database,
Harris County Appraisal District

Date: May 20, 2019

This map is made available for reference purposes only and should not be substituted for a survey product. The City of Houston will not accept liability of any kind in conjunction with its use.



**PLANNING &
DEVELOPMENT
DEPARTMENT**



Greater Uptown: Public Facilities

- Super Neighborhood Boundary
- Community Centers
- Fire Station
- Police Station
- School

- Airports
- Harris County Hospitals
- Private Hospitals
- Other Health Facilities
- Library

- Rail Road
- Metro Rail Stations
- Metro Rail Line
- Parks
- TIRZ

Source: City of Houston GIS Database

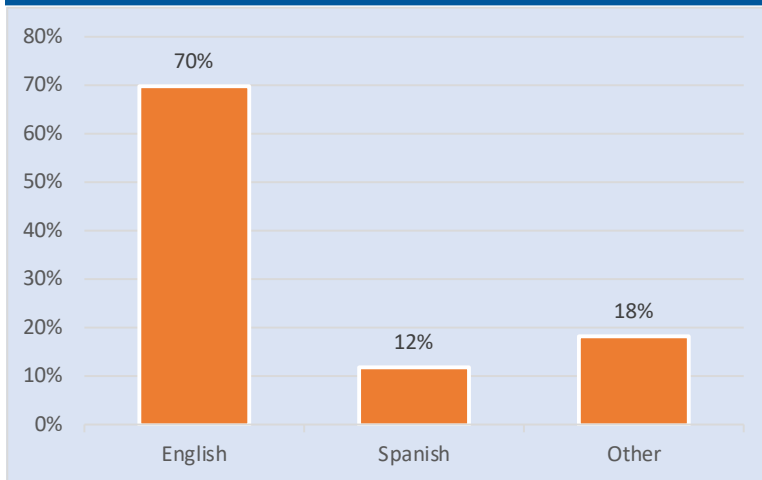
Date: May 2019

This map is made available for reference purposes only and should not be substituted for a survey product. The City of Houston will not accept liability of any kind in conjunction with its use.

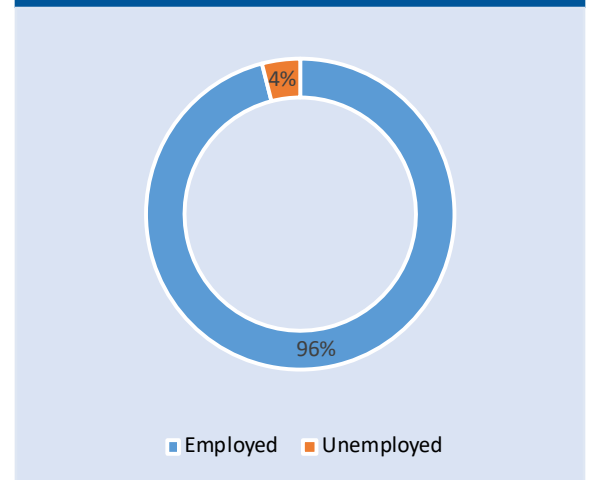


**PLANNING &
DEVELOPMENT
DEPARTMENT**

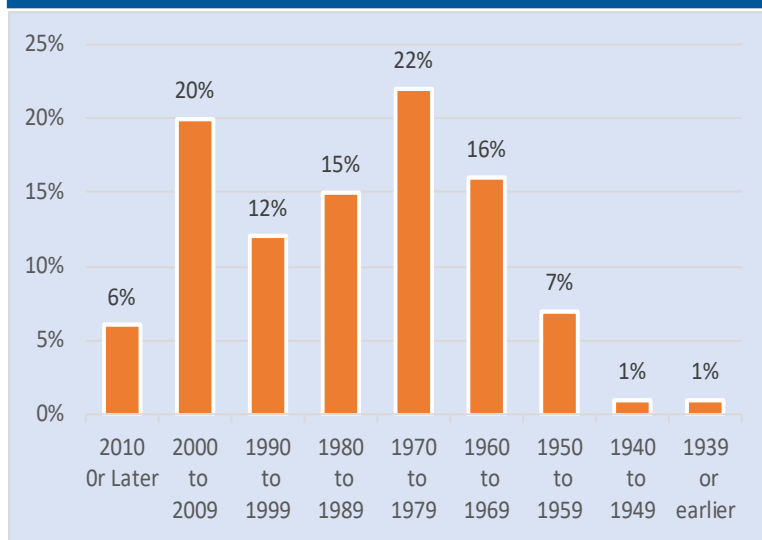
Language Spoken at Home



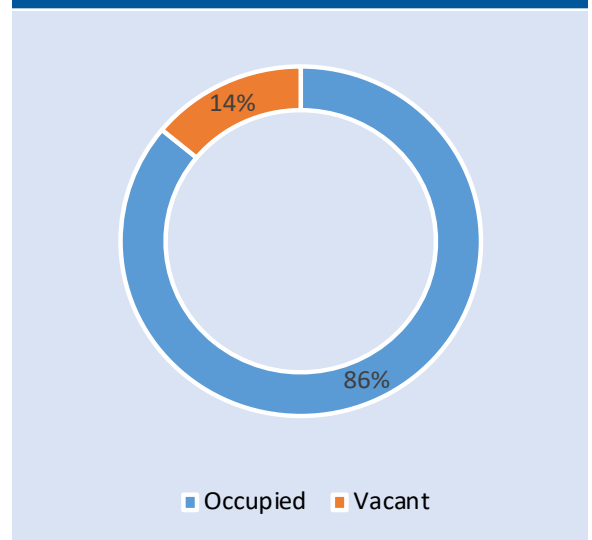
Employment Status



Housing Units by Year Built



Housing Occupancy



Source: U.S. Census Bureau, 2000
American Community Survey, 2013-2017 Estimates



**PLANNING &
DEVELOPMENT
DEPARTMENT**