

# SUPER

## Neighborhood

### RESOURCE ASSESSMENT



	Super Neighborhood		Houston	
Pop. characteristics	2000	2017	2000	2017
Total population	12,905	12,619	1,953,631	2,267,336
Persons per sq. mile	4,560	4,456	3,166	3,394
<b>Age of Population</b>				
Under 5 years	11%	10%	8%	8%
5- 17 years	24%	21%	19%	17%
18- 64 years	60%	61%	64%	65%
65 and over	5%	8%	9%	10%
<b>Ethnicity</b>				
Non Hispanic Whites	9%	4%	31%	25%
Non Hispanic Blacks	3%	6%	25%	22%
Hispanics	87%	89%	37%	44%
Non Hispanic Asians	1%	1%	6%	7%
Non Hispanic Others	0%	0%	1%	2%
<b>Income</b>				
Under \$25,000	43%	42%	33%	26%
\$25,000 to \$49,999	36%	28%	31%	25%
\$50,000 to \$99,999	18%	21%	24%	26%
Over \$100,000	3%	9%	12%	23%
<b>Median Household Income</b>	\$29,430	\$30,093	\$36,616	\$49,399
<b>Educational Status</b>				
No Diploma	65%	43%	30%	22%
High School Diploma	18%	29%	20%	23%
Some College	12%	18%	23%	23%
Bachelor's or Higher	5%	10%	27%	32%
<b>Housing and Households</b>				
Total housing units	3,574	4,103	782,378	943,183
Occupied	96%	89%	92%	89%
Vacant	4%	11%	8%	11%
Total households	3,415	3,663	717,945	838,950
Family households	2,720	2,599	457,549	491,778
Median Housing Value	\$46,651	\$92,632	\$79,300	\$149,000

### Description

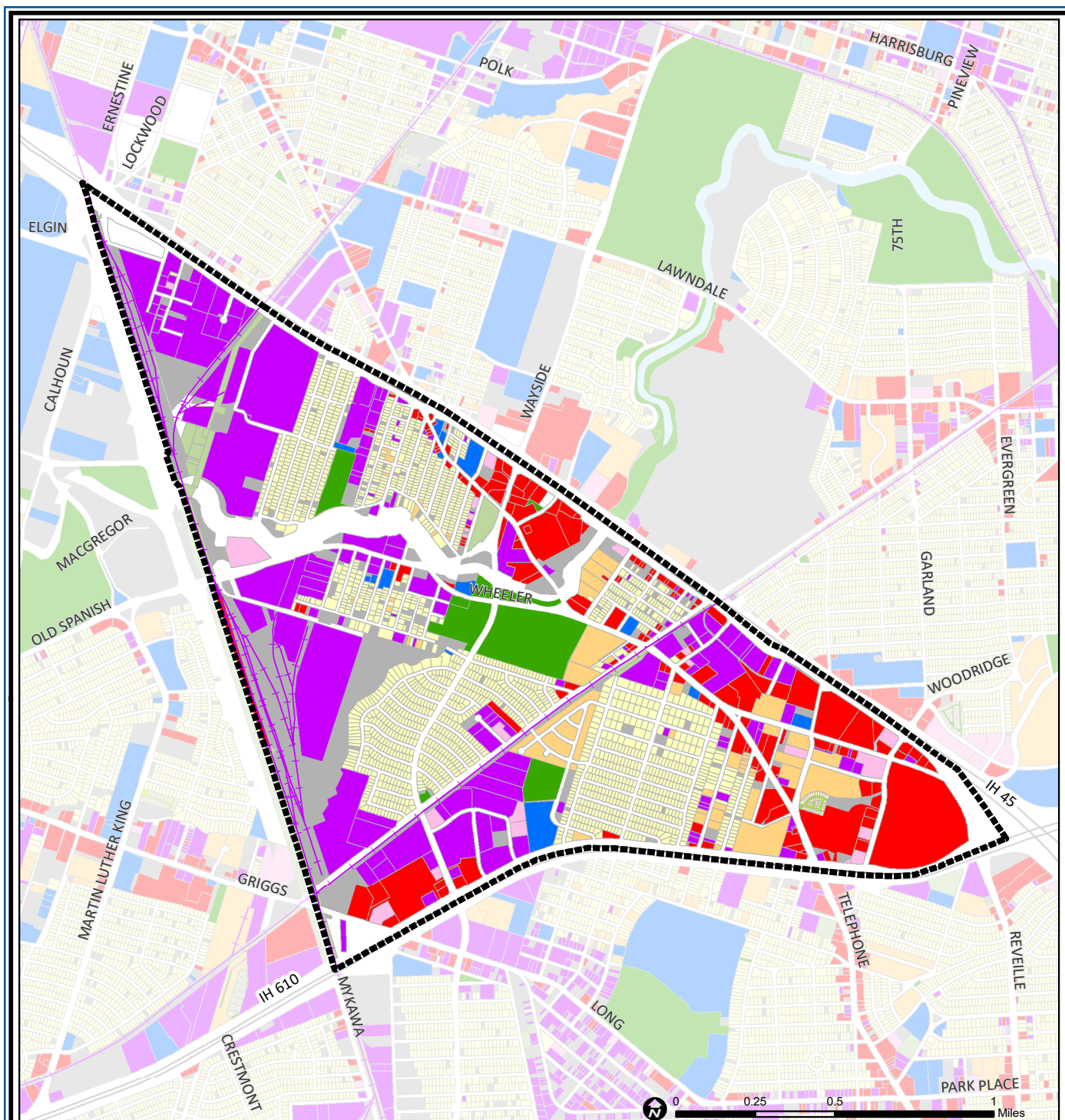
Gulfgate/Riverview is a collection of neighborhoods inside Loop 610 south of the Gulf Freeway. It is criss-crossed by older highways, such as Telephone Road and the city's first by-pass, the Old Spanish Trail/Wayside combination. These highways, along with a major rail line and Brays Bayou, divide the area into a number of discrete neighborhoods. The largest of these (Pine Valley, Freeway, and Riverview) consist of single family homes surrounded by light industrial buildings and warehouses. Gulfgate, one of Houston's first malls, located on the eastern edge of the area, has been completely redeveloped as part of a tax increment reinvestment zone to revitalize what had been a failing retail district.

### Highlights

- ✓ Houston City Council Districts I & D
- ✓ Houston Independent School District
- ✓ 7 Police beats (includes bordering beats)
- ✓ 1,812 acres (2.83 sq. miles)



**PLANNING &  
DEVELOPMENT  
DEPARTMENT**



## Gulfgate Riverview / Pine Valley: Land Use

Freeway	Commercial	Parks and Open Space
Rail Road	Office	Undeveloped
Super Neighborhood Boundary	Industrial	Agricultural Production
Single-family Residential	Public and Institutional	Open Water
Multi-family Residential	Transportation and Utilities	Unknown

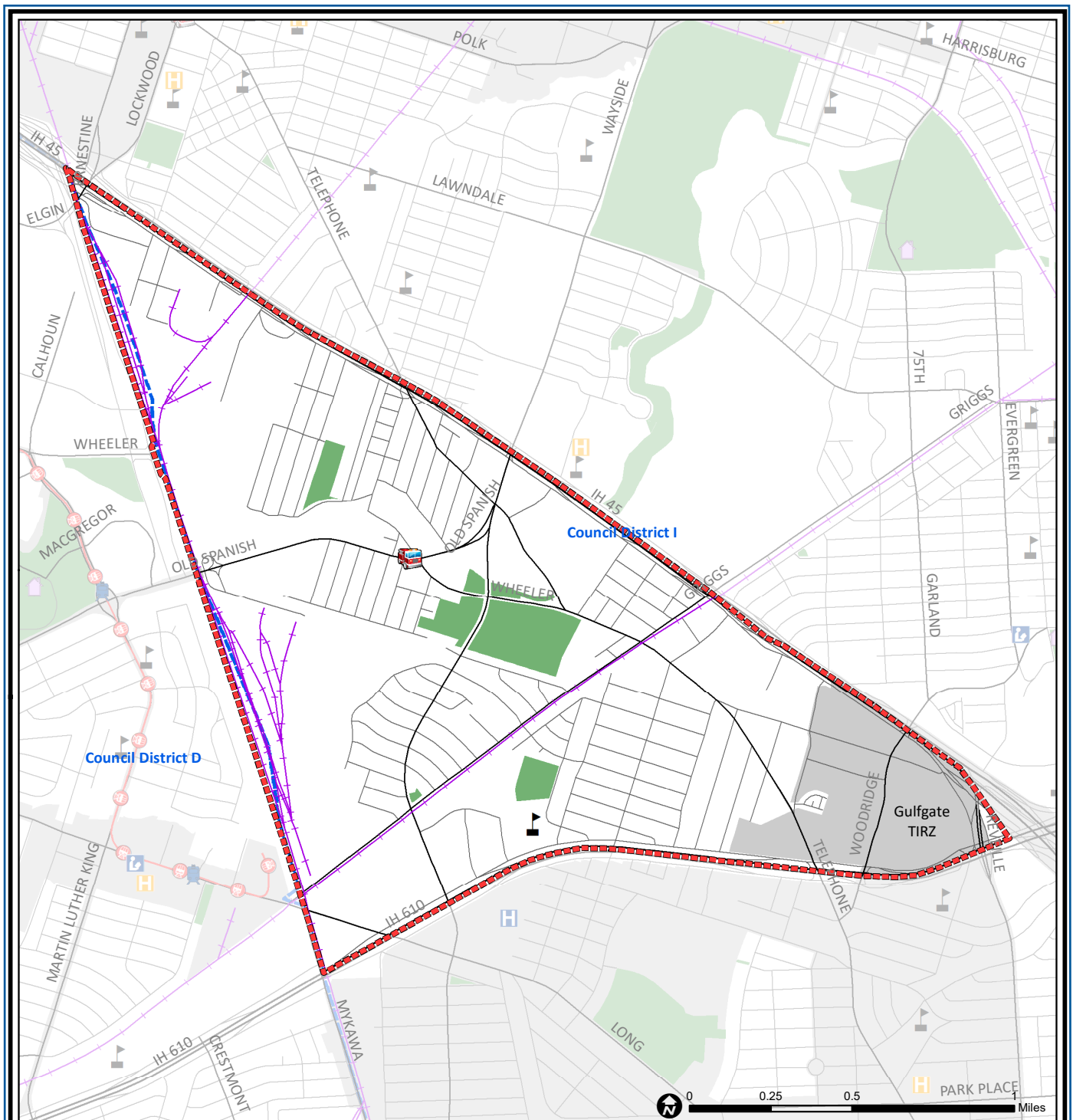
Source: City of Houston GIS Database,  
Harris County Appraisal District

Date: May 20, 2019

This map is made available for reference purposes only and should not be substituted for a survey product. The City of Houston will not accept liability of any kind in conjunction with its use.



**PLANNING &  
DEVELOPMENT  
DEPARTMENT**



## Gulfgate Riverview / Pine Valley: Public Facilities

Source: City of Houston GIS Database

Date: May 2019

This map is made available for reference purposes only and should not be substituted for a survey product. The City of Houston will not accept liability of any kind in conjunction with its use.



**PLANNING &  
DEVELOPMENT  
DEPARTMENT**

Super Neighborhood Boundary

Community Centers

Fire Station

Police Station

School

Airports

Harris County Hospitals

Private Hospitals

Other Health Facilities

Library

Rail Road

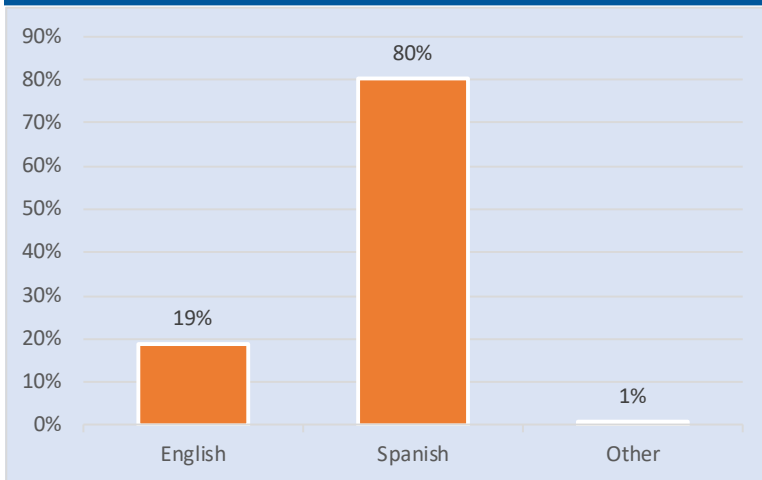
Metro Rail Stations

Metro Rail Line

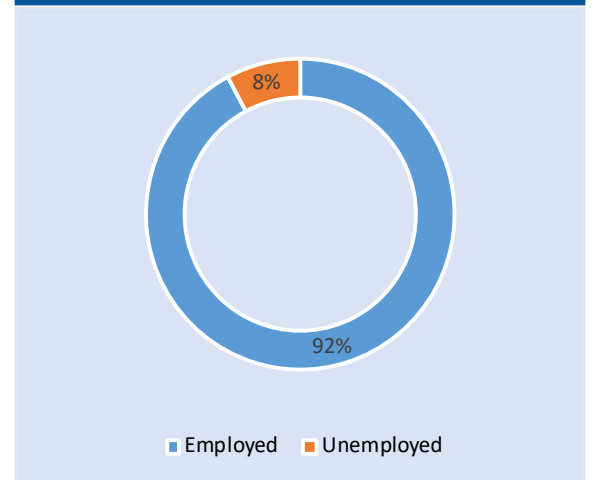
Parks

TIRZ

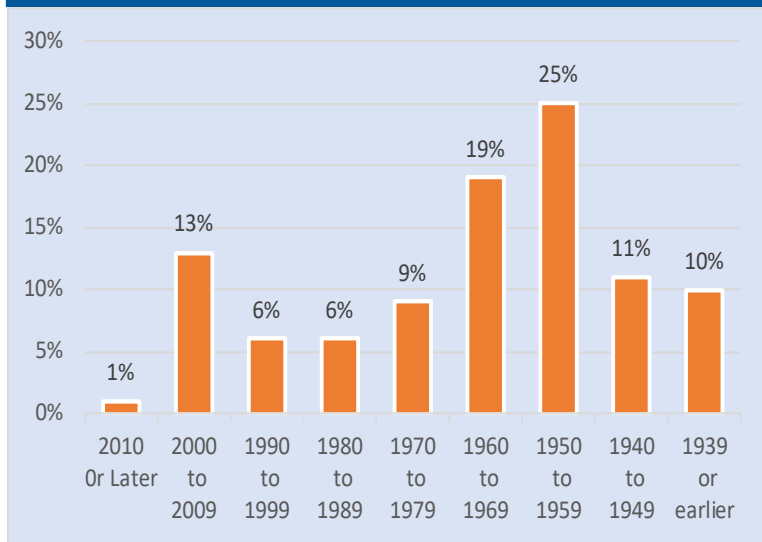
### Language Spoken at Home



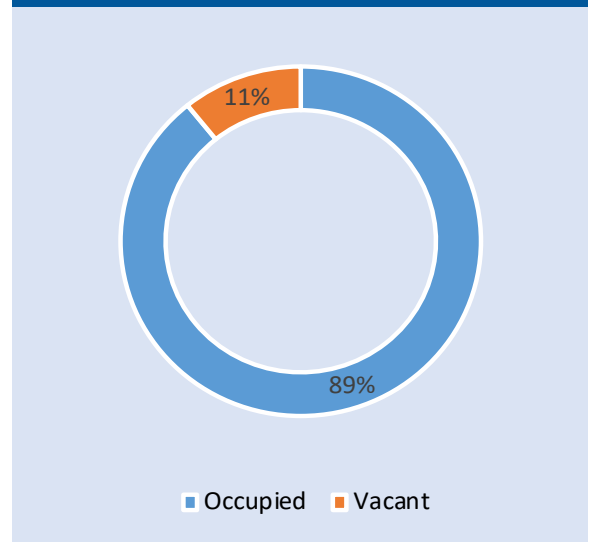
### Employment Status



### Housing Units by Year Built



### Housing Occupancy



Source: U.S. Census Bureau, 2000  
American Community Survey, 2013-2017 Estimates



**PLANNING &  
DEVELOPMENT  
DEPARTMENT**