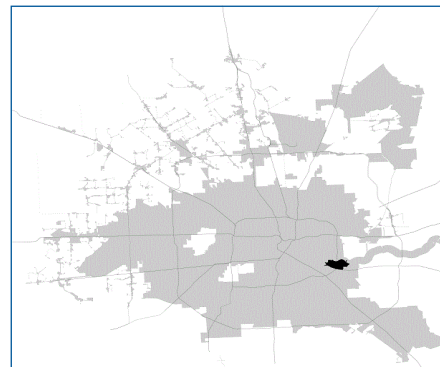


SUPER

Neighborhood

RESOURCE ASSESSMENT



	Super Neighborhood		Houston	
Pop. characteristics	2000	2017	2000	2017
Total population	3,768	2,710	1,953,631	2,267,336
Persons per sq. mile	649	1,118	3,166	3,394
Age of Population				
Under 5 years	11%	9%	8%	8%
5- 17 years	25%	21%	19%	17%
18- 64 years	57%	61%	64%	65%
65 and over	8%	9%	9%	10%
Ethnicity				
Non Hispanic Whites	5%	4%	31%	25%
Non Hispanic Blacks	6%	8%	25%	22%
Hispanics	88%	88%	37%	44%
Non Hispanic Asians	0%	0%	6%	7%
Non Hispanic Others	0%	0%	1%	2%
Income				
Under \$25,000	46%	39%	33%	26%
\$25,000 to \$49,999	40%	23%	31%	25%
\$50,000 to \$99,999	11%	24%	24%	26%
Over \$100,000	3%	14%	12%	23%
Median Household Income	\$26,989	\$35,937	\$36,616	\$49,399
Educational Status				
No Diploma	68%	42%	30%	22%
High School Diploma	22%	29%	20%	23%
Some College	7%	21%	23%	23%
Bachelor's or Higher	2%	8%	27%	32%
Housing and Households				
Total housing units	1,077	991	782,378	943,183
Occupied	92%	80%	92%	89%
Vacant	8%	20%	8%	11%
Total households	993	797	717,945	838,950
Family households	787	560	457,549	491,778
Median Housing Value	\$33,882	\$72,444	\$79,300	\$149,000

Description

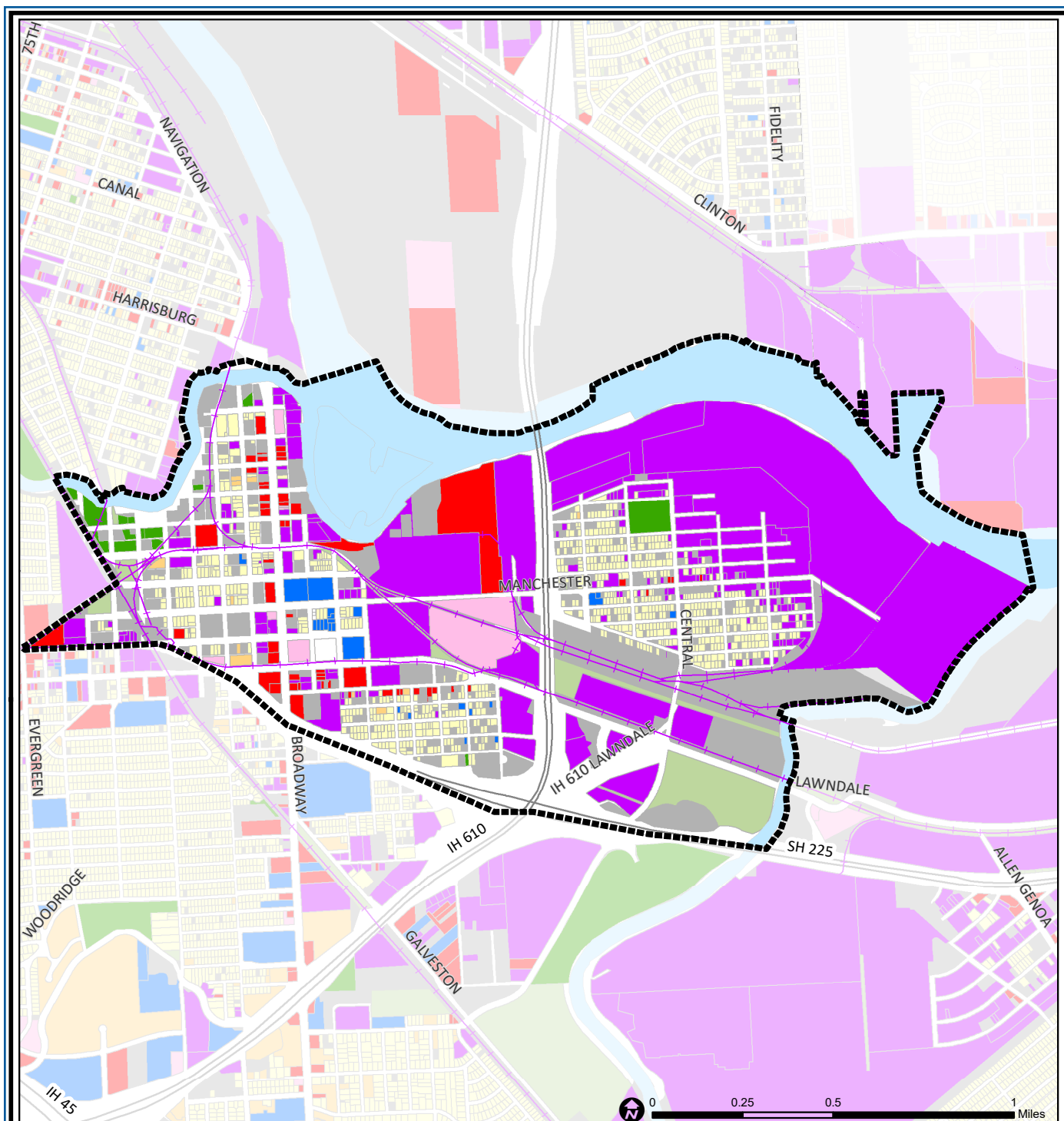
Harrisburg/Manchester has a history which predates Houston. Harrisburg was a community located at the confluence of Brays Bayou and Buffalo Bayou before the Texas Revolution. It was burned by Santa Anna's army on their way to defeat at San Jacinto. Manchester lies to the east of Harrisburg, near the confluence of Sims Bayou and the Ship Channel. Its modest homes are surrounded by Channel industries. Harrisburg residential areas have largely disappeared, and its commercial district has not experienced the revival that the rise of the area's Hispanic community has brought to other East End shopping districts.

Highlights

- ✓ Houston City Council Districts I & H
- ✓ Houston Independent School District
- ✓ Galena Park Independent School District
- ✓ 5 Police beats (includes bordering beats)
- ✓ 1,549 acres (2.42 sq. miles)



**PLANNING &
DEVELOPMENT
DEPARTMENT**



Harrisburg / Manchester: Land Use

Freeway	Commercial	Parks and Open Space
Rail Road	Office	Undeveloped
Super Neighborhood Boundary	Industrial	Agricultural Production
Single-family Residential	Public and Institutional	Open Water
Multi-family Residential	Transportation and Utilities	Unknown

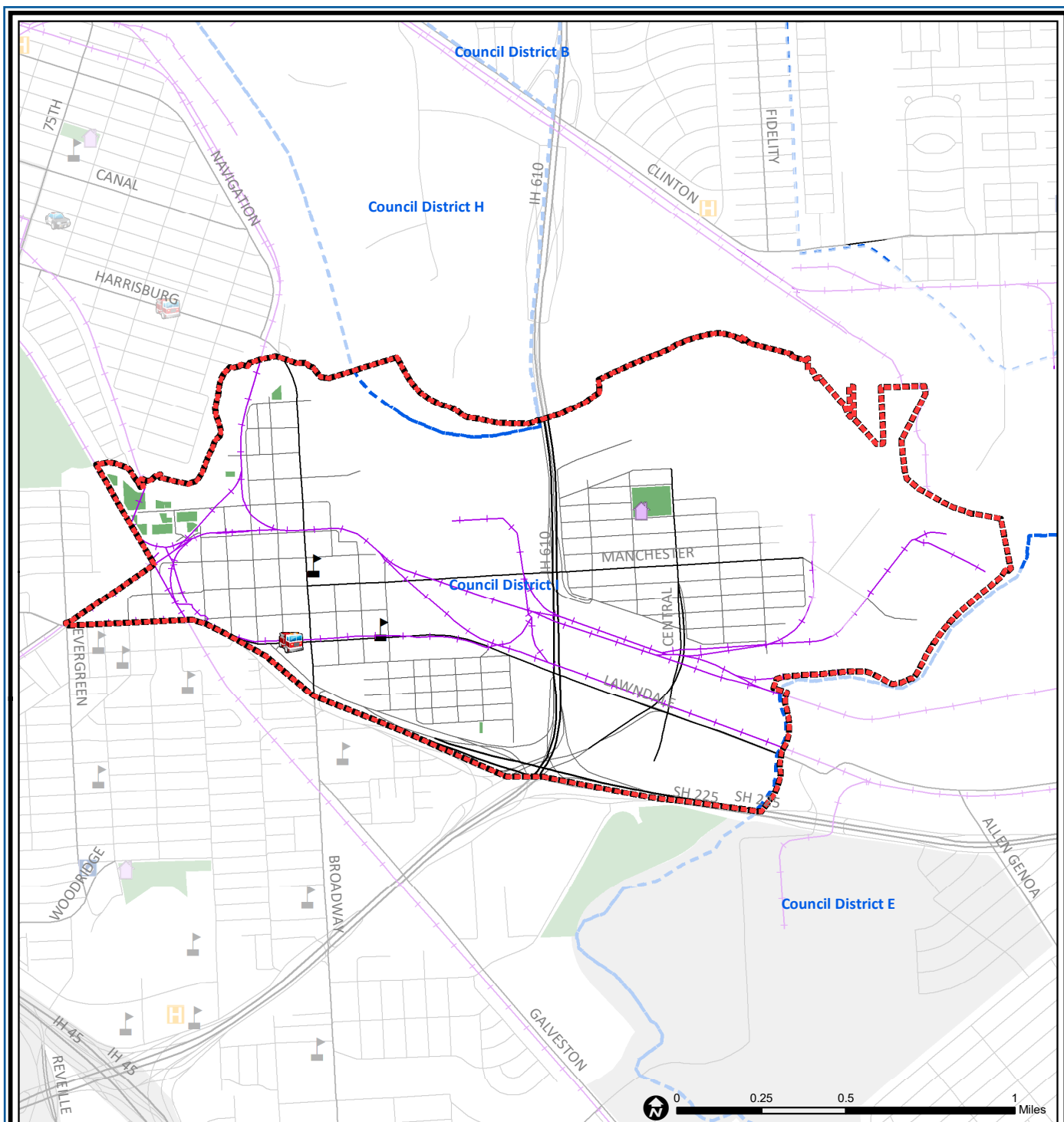
Source: City of Houston GIS Database,
Harris County Appraisal District

Date: May 21, 2019

This map is made available for reference purposes only and should not be substituted for a survey product. The City of Houston will not accept liability of any kind in conjunction with its use.



**PLANNING &
DEVELOPMENT
DEPARTMENT**



Harrisburg / Manchester: Public Facilities

- Super Neighborhood Boundary
- Community Centers
- Fire Station
- Police Station
- School

- Airports
- Harris County Hospitals
- Private Hospitals
- Other Health Facilities
- Library

- Rail Road
- Metro Rail Stations
- Metro Rail Line
- Parks
- TIRZ

Source: City of Houston GIS Database

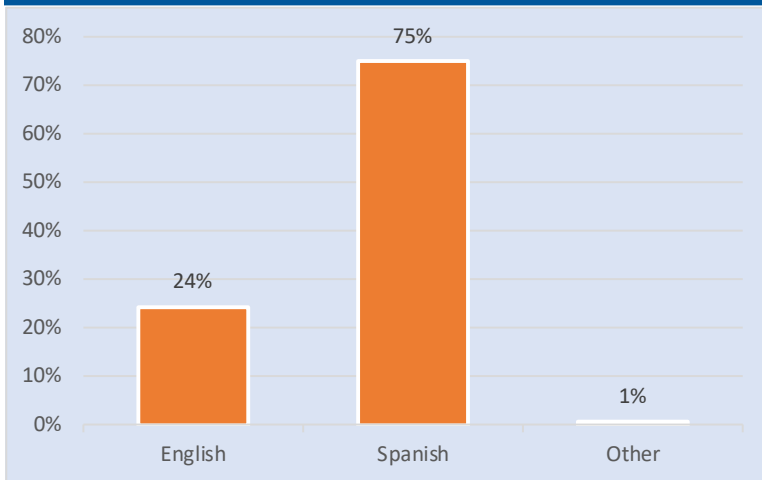
Date: May 2019

This map is made available for reference purposes only and should not be substituted for a survey product. The City of Houston will not accept liability of any kind in conjunction with its use.

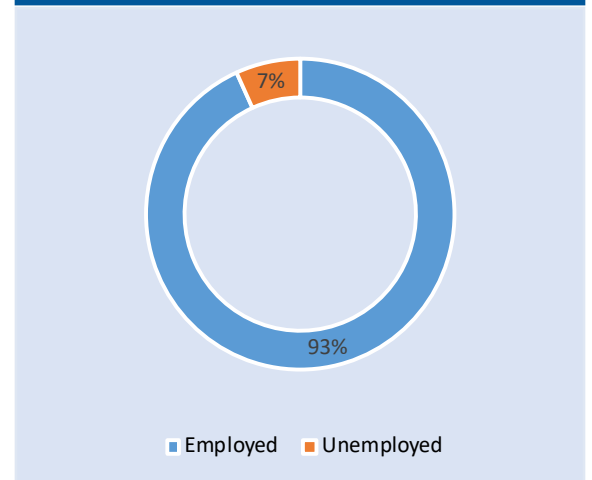


**PLANNING &
DEVELOPMENT
DEPARTMENT**

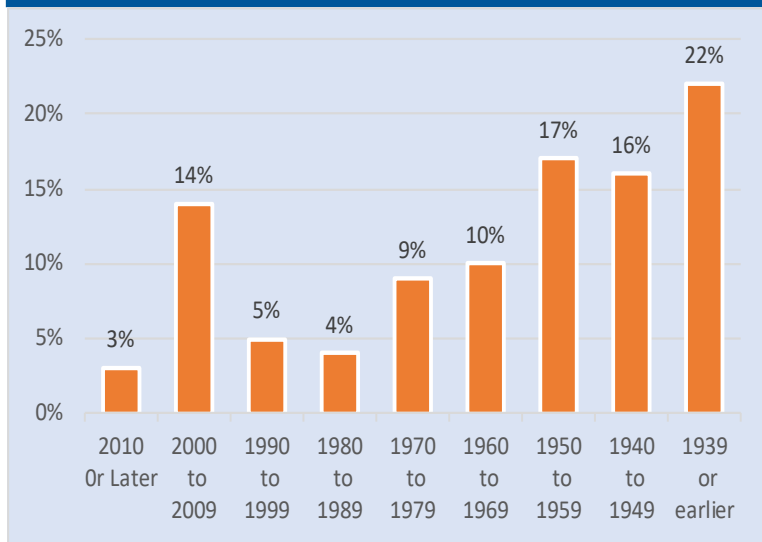
Language Spoken at Home



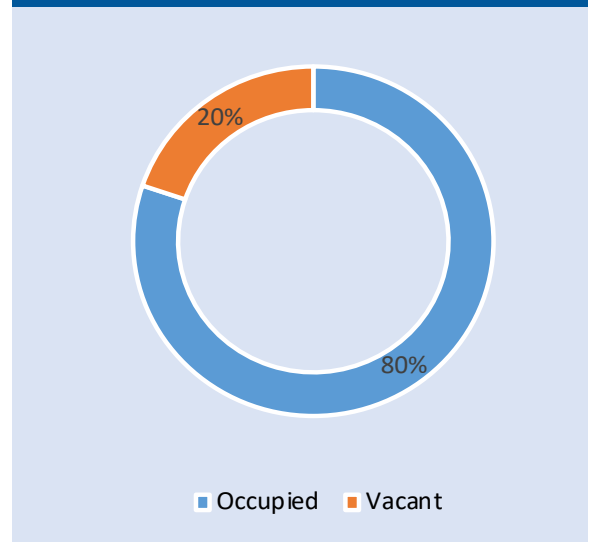
Employment Status



Housing Units by Year Built



Housing Occupancy



Source: U.S. Census Bureau, 2000
American Community Survey, 2013-2017 Estimates



**PLANNING &
DEVELOPMENT
DEPARTMENT**