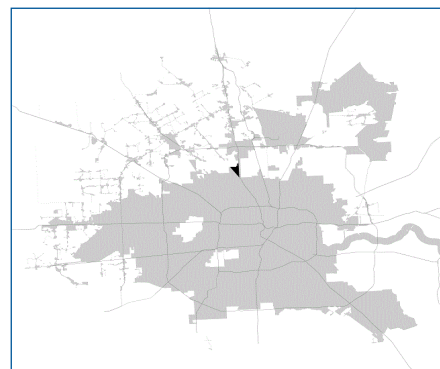


SUPER

Neighborhood

RESOURCE ASSESSMENT



Description

Hidden Valley is a neighborhood in north Houston, a triangle formed by the North Freeway, Veterans Memorial Highway, and West Mount Houston Road. This area is located between heavily wooded areas to the north and south. It is characterized by tract homes separated from the freeway edge by a row of large auto dealerships.

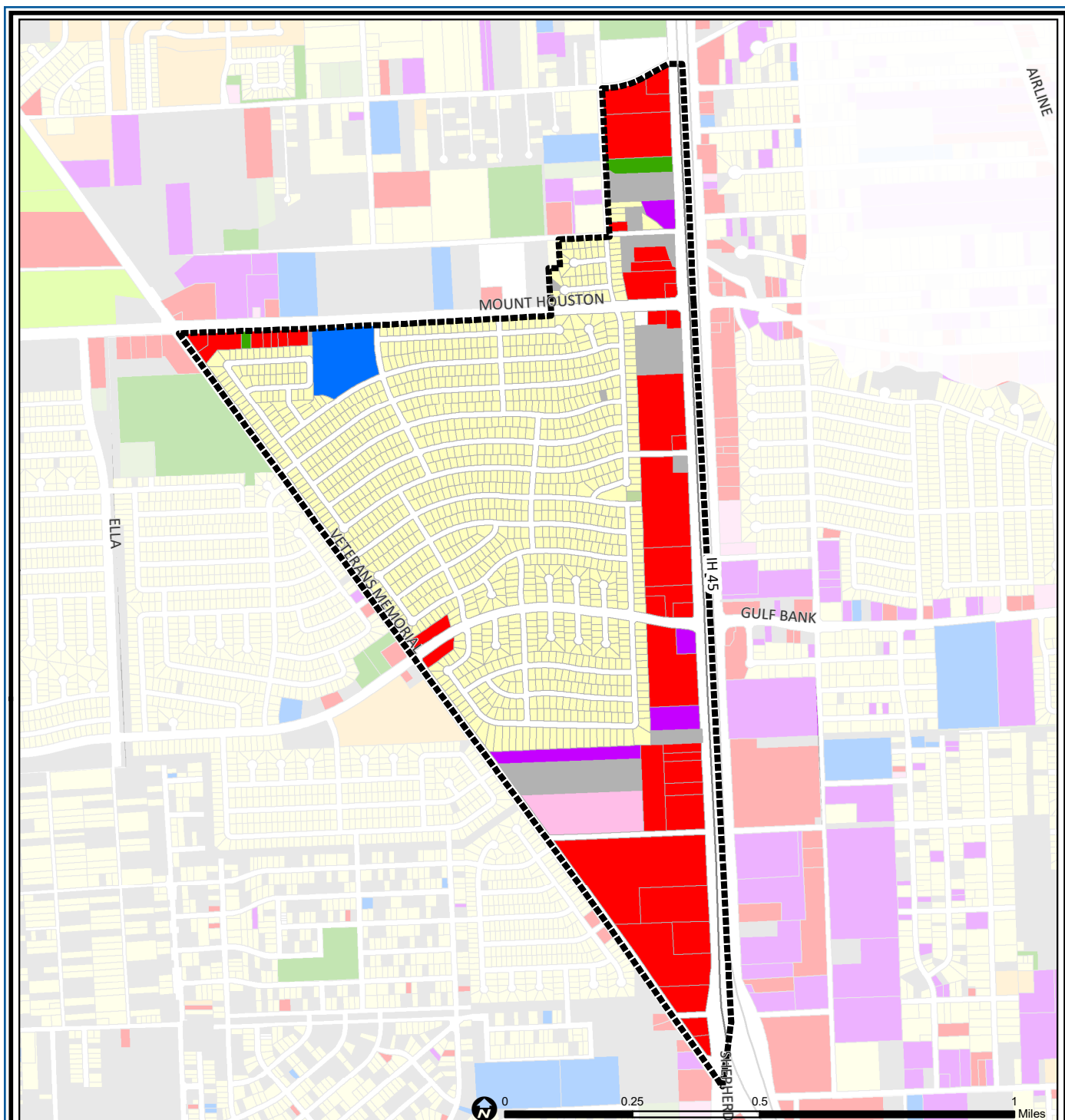
Highlights

- ✓ Houston City Council Districts B & H
- ✓ Houston Independent School District
- ✓ Aldine Independent School District
- ✓ 1 Police beat (includes bordering beats)
- ✓ 563 acres (0.88 sq. miles)

	Super Neighborhood		Houston	
Pop. characteristics	2000	2017	2000	2017
Total population	3,891	3,708	1,953,631	2,267,336
Persons per sq. mile	4,422	4,212	3,166	3,394
Age of Population				
Under 5 years	6%	7%	8%	8%
5- 17 years	20%	19%	19%	17%
18- 64 years	63%	62%	64%	65%
65 and over	11%	12%	9%	10%
Ethnicity				
Non Hispanic Whites	30%	10%	31%	25%
Non Hispanic Blacks	18%	11%	25%	22%
Hispanics	45%	71%	37%	44%
Non Hispanic Asians	6%	8%	6%	7%
Non Hispanic Others	1%	0%	1%	2%
Income				
Under \$25,000	21%	16%	33%	26%
\$25,000 to \$49,999	34%	26%	31%	25%
\$50,000 to \$99,999	35%	41%	24%	26%
Over \$100,000	10%	17%	12%	23%
Median Household Income	\$44,649	\$54,277	\$36,616	\$49,399
Educational Status				
No Diploma	34%	36%	30%	22%
High School Diploma	28%	28%	20%	23%
Some College	25%	23%	23%	23%
Bachelor's or Higher	13%	13%	27%	32%
Housing and Households				
Total housing units	1,275	1,145	782,378	943,183
Occupied	98%	98%	92%	89%
Vacant	2%	2%	8%	11%
Total households	1,244	1,140	717,945	838,950
Family households	1,011	931	457,549	491,778
Median Housing Value	\$68,184	\$101,615	\$79,300	\$149,000



**PLANNING &
DEVELOPMENT
DEPARTMENT**



Hidden Valley: Land Use

Freeway	Commercial	Parks and Open Space
Rail Road	Office	Undeveloped
Super Neighborhood Boundary	Industrial	Agricultural Production
Single-family Residential	Public and Institutional	Open Water
Multi-family Residential	Transportation and Utilities	Unknown

Source: City of Houston GIS Database,
Harris County Appraisal District

Date: May 21, 2019

This map is made available for reference purposes only and should not be substituted for a survey product. The City of Houston will not accept liability of any kind in conjunction with its use.



**PLANNING &
DEVELOPMENT
DEPARTMENT**



Hidden Valley: Public Facilities

	Super Neighborhood Boundary		Airports		Rail Road
	Community Centers		Harris County Hospitals		Metro Rail Stations
	Fire Station		Private Hospitals		Metro Rail Line
	Police Station		Other Health Facilities		Parks
	School		Library		TIRZ

Source: City of Houston GIS Database

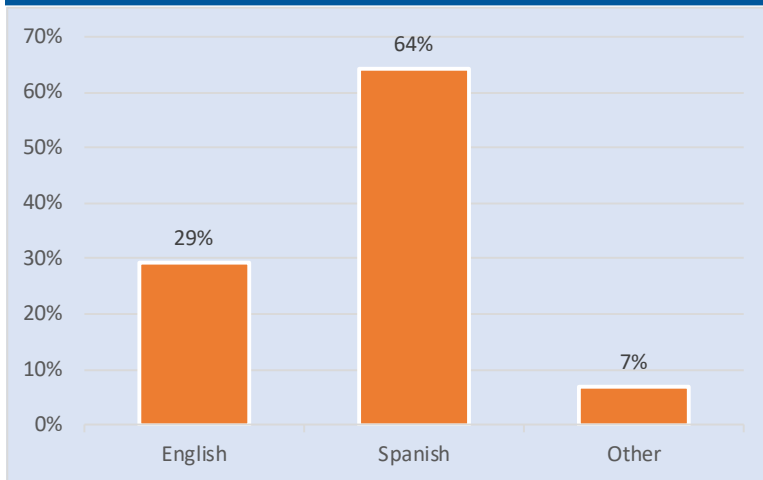
Date: May 2019

This map is made available for reference purposes only and should not be substituted for a survey product. The City of Houston will not accept liability of any kind in conjunction with its use.

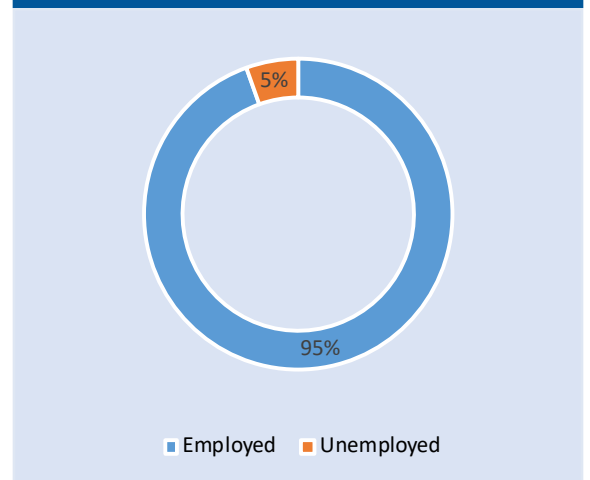


**PLANNING &
DEVELOPMENT
DEPARTMENT**

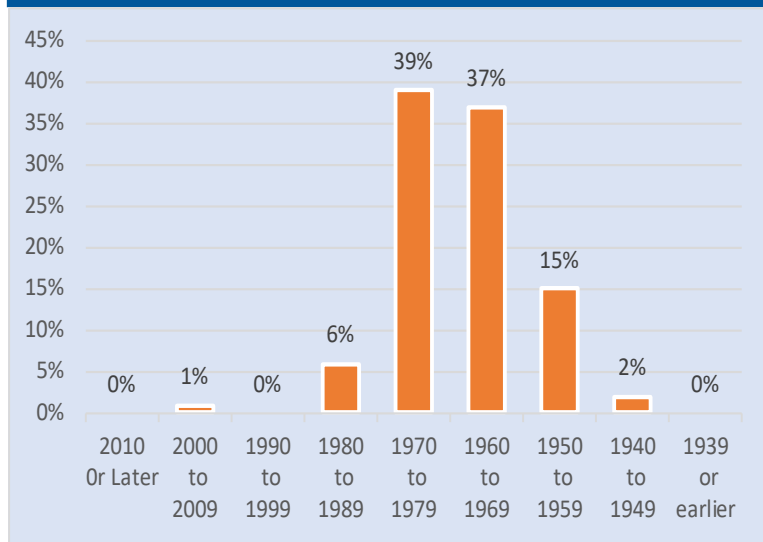
Language Spoken at Home



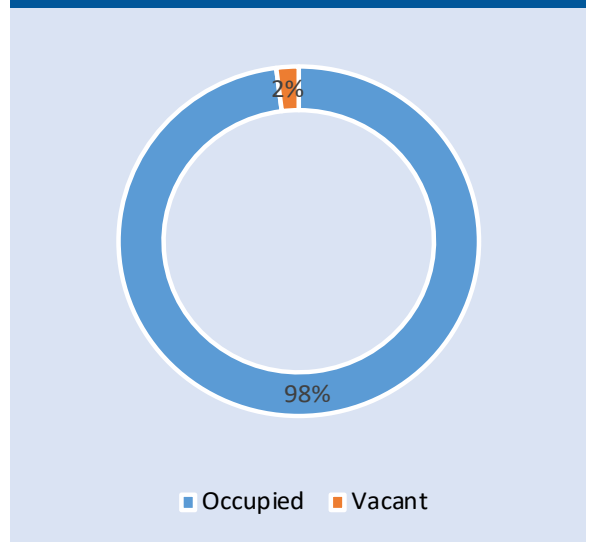
Employment Status



Housing Units by Year Built



Housing Occupancy



Source: U.S. Census Bureau, 2000
American Community Survey, 2013-2017 Estimates



**PLANNING &
DEVELOPMENT
DEPARTMENT**