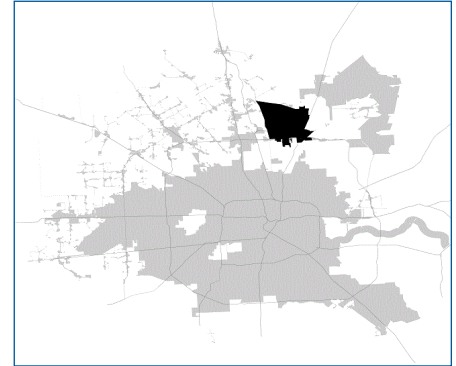


SUPER

Neighborhood

RESOURCE ASSESSMENT



| | Super Neighborhood | | Houston | |
|--------------------------------|--------------------|----------|-----------|-----------|
| Pop. characteristics | 2000 | 2017 | 2000 | 2017 |
| Total population | 5,590 | 15,265 | 1,953,631 | 2,267,336 |
| Persons per sq. mile | 209 | 570 | 3,166 | 3,394 |
| Age of Population | | | | |
| Under 5 years | 7% | 10% | 8% | 8% |
| 5- 17 years | 19% | 22% | 19% | 17% |
| 18- 64 years | 65% | 63% | 64% | 65% |
| 65 and over | 8% | 5% | 9% | 10% |
| Ethnicity | | | | |
| Non Hispanic Whites | 45% | 10% | 31% | 25% |
| Non Hispanic Blacks | 20% | 45% | 25% | 22% |
| Hispanics | 30% | 42% | 37% | 44% |
| Non Hispanic Asians | 3% | 2% | 6% | 7% |
| Non Hispanic Others | 2% | 1% | 1% | 2% |
| Income | | | | |
| Under \$25,000 | 36% | 32% | 33% | 26% |
| \$25,000 to \$49,999 | 34% | 32% | 31% | 25% |
| \$50,000 to \$99,999 | 25% | 28% | 24% | 26% |
| Over \$100,000 | 4% | 8% | 12% | 23% |
| Median Household Income | \$32,844 | \$36,844 | \$36,616 | \$49,399 |
| Educational Status | | | | |
| No Diploma | 38% | 24% | 30% | 22% |
| High School Diploma | 34% | 31% | 20% | 23% |
| Some College | 20% | 33% | 23% | 23% |
| Bachelor's or Higher | 8% | 12% | 27% | 32% |
| Housing and Households | | | | |
| Total housing units | 1,911 | 5,872 | 782,378 | 943,183 |
| Occupied | 91% | 92% | 92% | 89% |
| Vacant | 9% | 8% | 8% | 11% |
| Total households | 1,734 | 5,396 | 717,945 | 838,950 |
| Family households | 1,284 | 3,612 | 457,549 | 491,778 |
| Median Housing Value | \$66,255 | \$96,239 | \$79,300 | \$149,000 |

Description

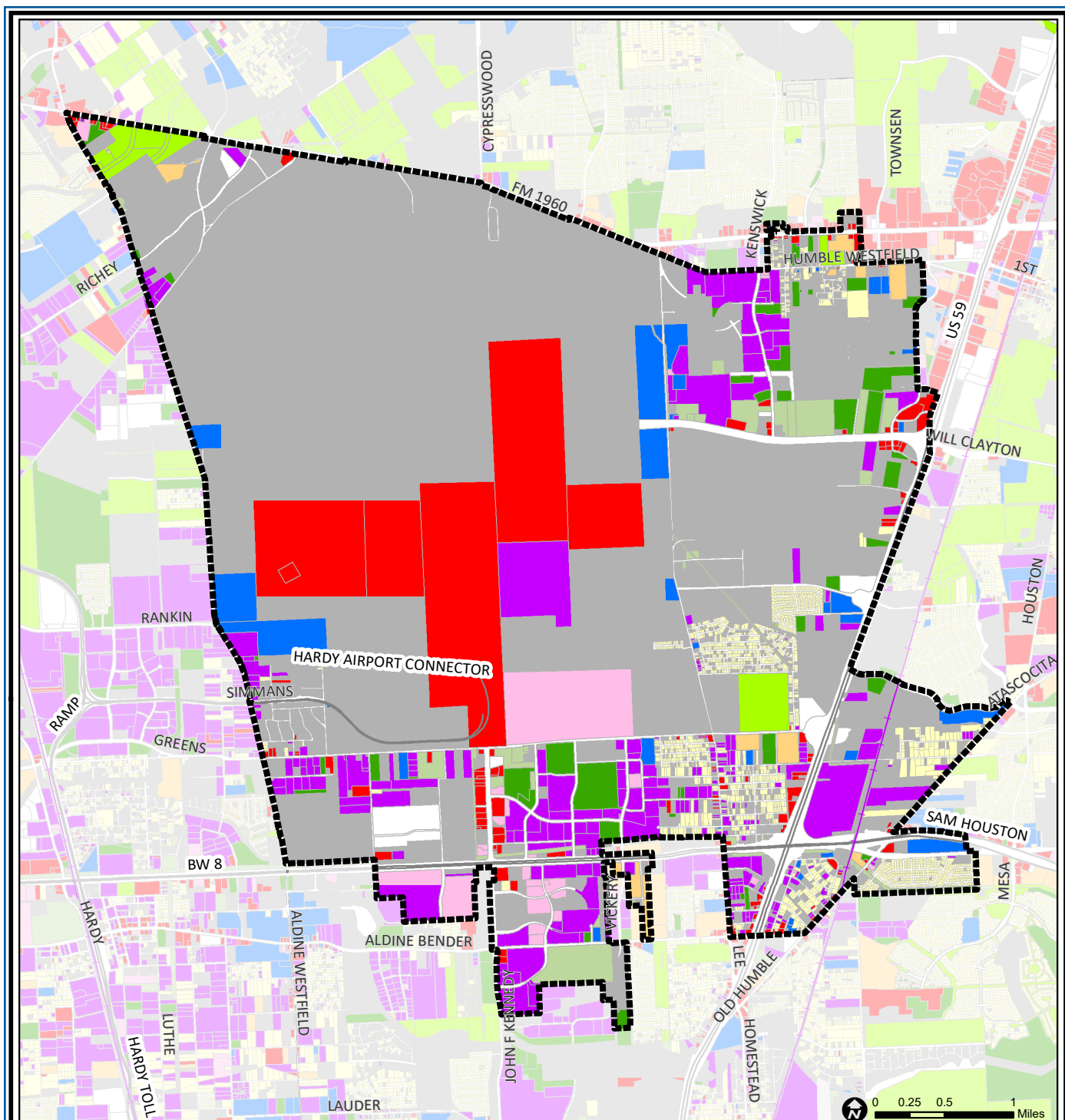
The IAH / Airport Area consists of subdivisions, commercial developments and undeveloped land surrounding George Bush Intercontinental Airport. Planning and land acquisition for the airport began in the early 1960s when this area included heavily wooded land on the edge of development. Many of the small subdivisions here recently received city water and sewer service, reflecting their origins as rural homesites. One such community is Bordersville, the last section of which was recently annexed at its residents' request. The World Houston and Interwood developments on the airport's south side are major employment centers.

Highlights

- ✓ Houston City Council District B
- ✓ Aldine Independent School District
- ✓ Humble Independent School District
- ✓ 9 Police beats (includes bordering beats)
- ✓ 17,104 acres (26.73 sq. miles)



**PLANNING &
DEVELOPMENT
DEPARTMENT**



IAH Airport Area: Land Use

| | | |
|-----------------------------|------------------------------|-------------------------|
| Freeway | Commercial | Parks and Open Space |
| Rail Road | Office | Undeveloped |
| Super Neighborhood Boundary | Industrial | Agricultural Production |
| Single-family Residential | Public and Institutional | Open Water |
| Multi-family Residential | Transportation and Utilities | Unknown |

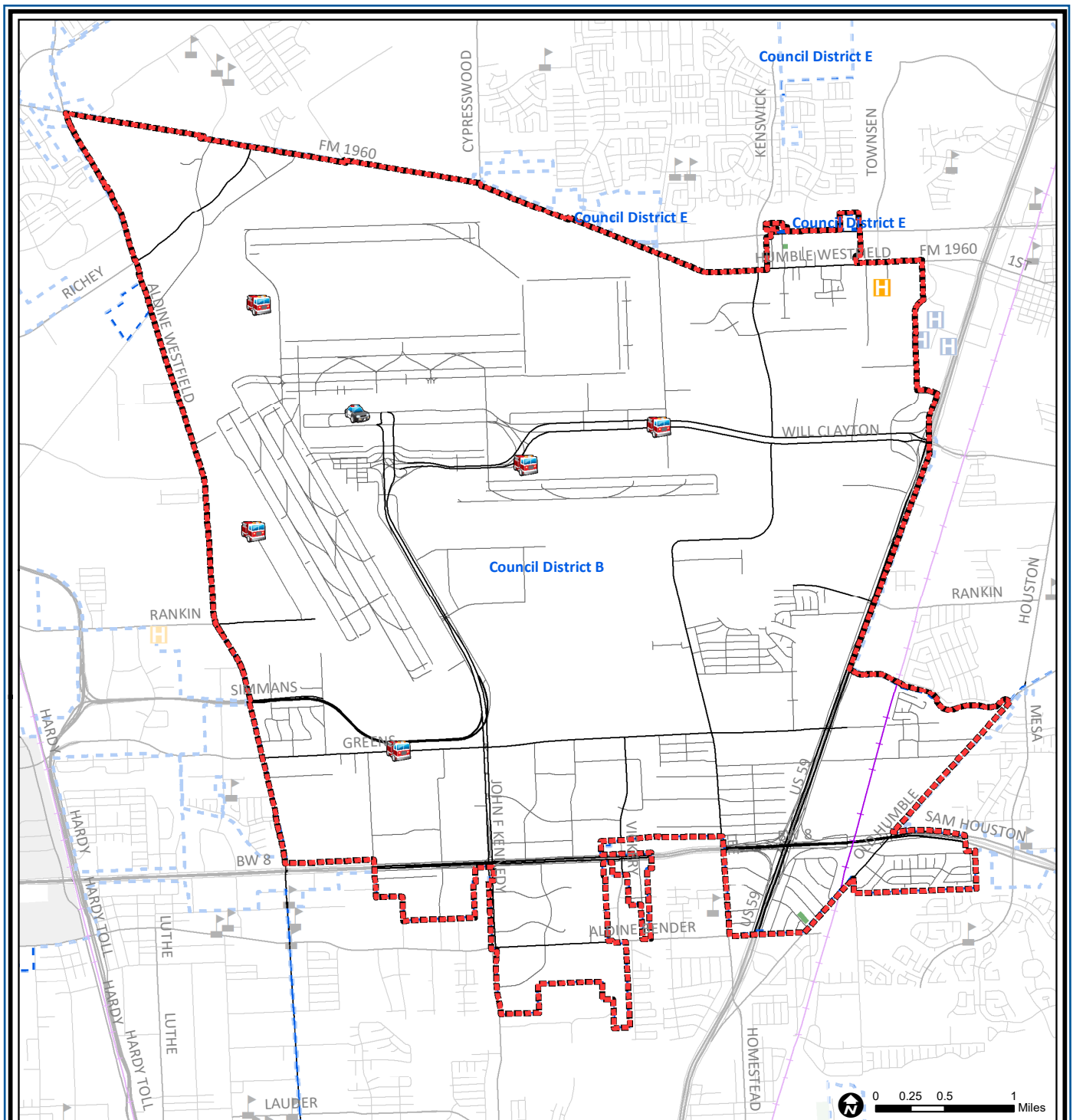
Source: City of Houston GIS Database,
Harris County Appraisal District

Date: May 21, 2019

This map is made available for reference purposes only and should not be substituted for a survey product. The City of Houston will not accept liability of any kind in conjunction with its use.



**PLANNING &
DEVELOPMENT
DEPARTMENT**



IAH / Airport Area: Public Facilities

Super Neighborhood Boundary

Community Centers

Fire Station

Police Station

School

Airports

Harris County Hospitals

Private Hospitals

Other Health Facilities

Library

Rail Road

Metro Rail Stations

Metro Rail Line

Parks

TIRZ

Source: City of Houston GIS Database

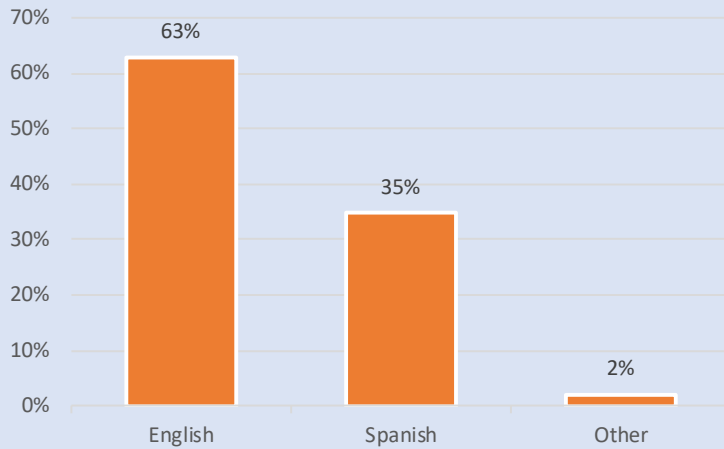
Date: May 2019

This map is made available for reference purposes only and should not be substituted for a survey product. The City of Houston will not accept liability of any kind in conjunction with its use.

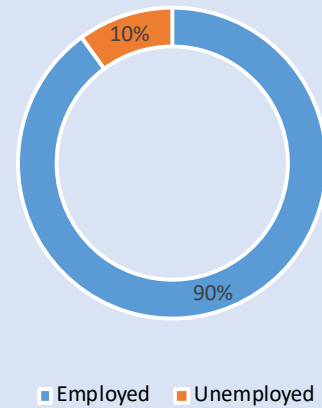


**PLANNING &
DEVELOPMENT
DEPARTMENT**

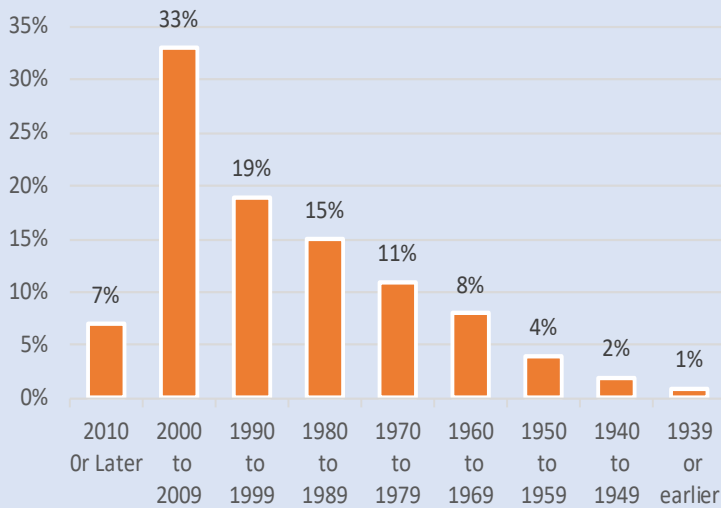
Language Spoken at Home



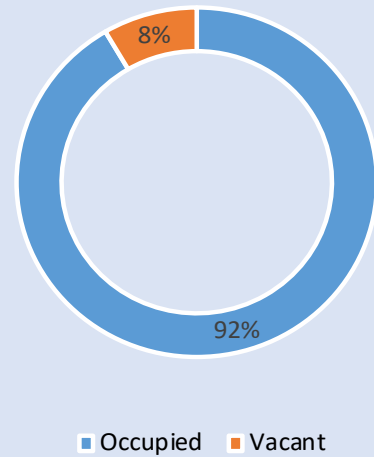
Employment Status



Housing Units by Year Built



Housing Occupancy



Source: U.S. Census Bureau, 2000
American Community Survey, 2013-2017 Estimates



**PLANNING &
DEVELOPMENT
DEPARTMENT**