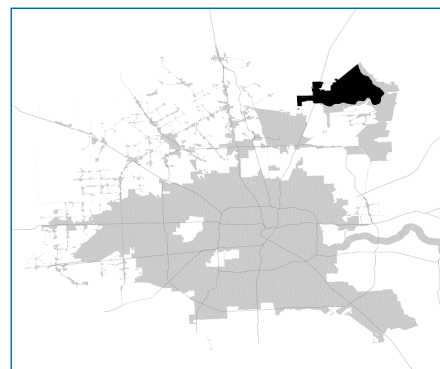


# SUPER

## Neighborhood

### RESOURCE ASSESSMENT



	Super Neighborhood		Houston	
Pop. characteristics	2000	2017	2000	2017
Total population	52,899	61,868	1,953,631	2,267,336
Persons per sq. mile	1,757	2,065	3,166	3,394
<b>Age of Population</b>				
Under 5 years	7%	5%	8%	8%
5- 17 years	24%	20%	19%	17%
18- 64 years	62%	60%	64%	65%
65 and over	7%	15%	9%	10%
<b>Ethnicity</b>				
Non Hispanic Whites	88%	77%	31%	25%
Non Hispanic Blacks	2%	3%	25%	22%
Hispanics	7%	14%	37%	44%
Non Hispanic Asians	3%	4%	6%	7%
Non Hispanic Others	1%	2%	1%	2%
<b>Income</b>				
Under \$25,000	8%	10%	33%	26%
\$25,000 to \$49,999	17%	15%	31%	25%
\$50,000 to \$99,999	37%	29%	24%	26%
Over \$100,000	38%	46%	12%	23%
<b>Median Household Income</b>	\$82,577	\$94,150	\$36,616	\$49,399
<b>Educational Status</b>				
No Diploma	4%	4%	30%	22%
High School Diploma	14%	14%	20%	23%
Some College	30%	32%	23%	23%
Bachelor's or Higher	52%	50%	27%	32%
<b>Housing and Households</b>				
Total housing units	19,369	23,658	782,378	943,183
Occupied	95%	95%	92%	89%
Vacant	5%	5%	8%	11%
Total households	18,367	22,436	717,945	838,950
Family households	15,248	16,820	457,549	491,778
Median Housing Value	\$156,452	\$236,784	\$79,300	\$149,000

### Description

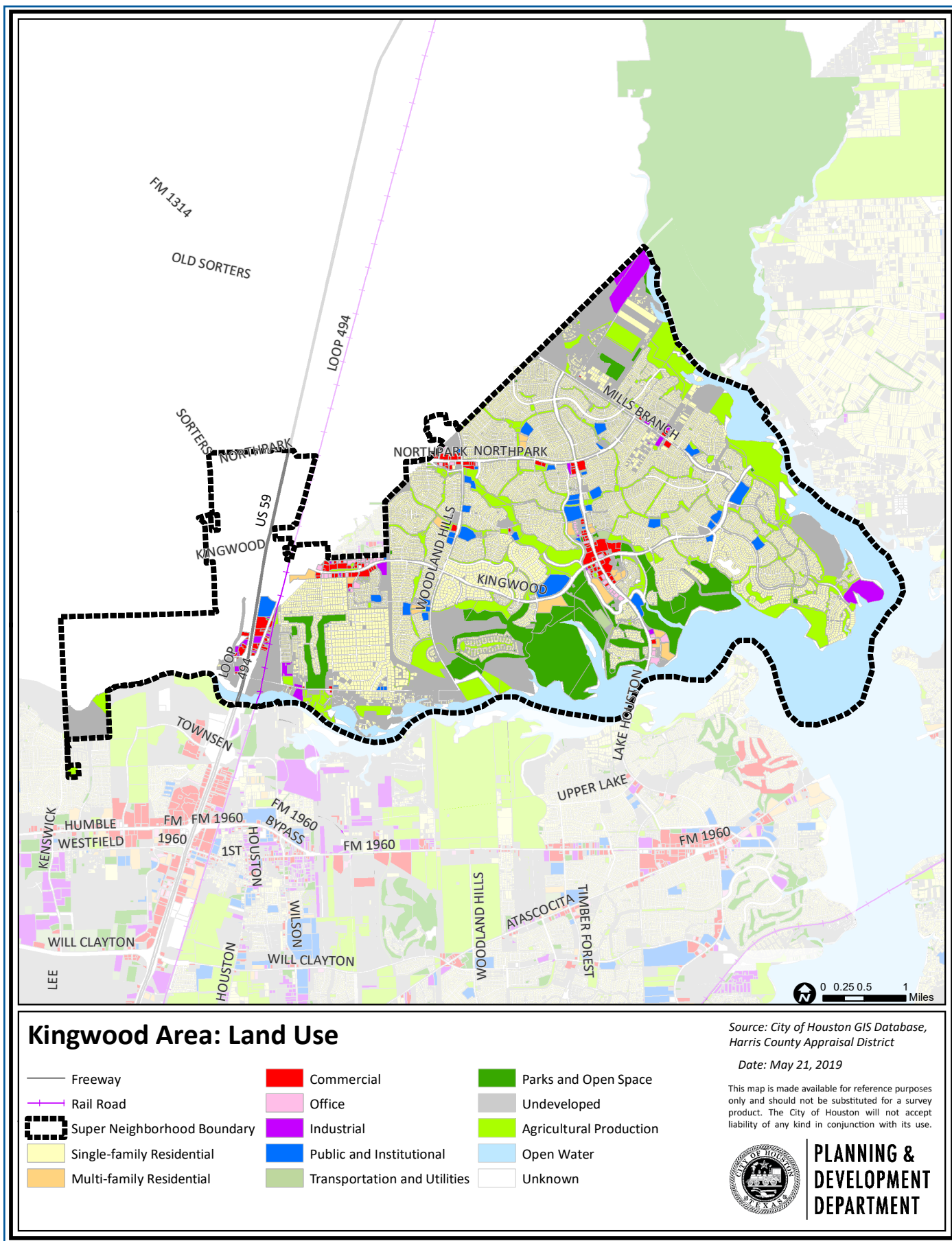
Kingwood Area includes a number of small subdivisions which predate the master planned development for which it is known. The Kingwood master planned area includes a wide range of home types and prices in a heavily wooded setting. A commercial development at its entrance was annexed in 1995; the residential areas, along with the Forest Cove subdivision, were annexed in 1996. Most residents are located in the Humble ISD. The small portion of the area found in Montgomery County is in New Caney ISD. Home construction and commercial development continue, especially on the northeastern and southeastern edges of the community.

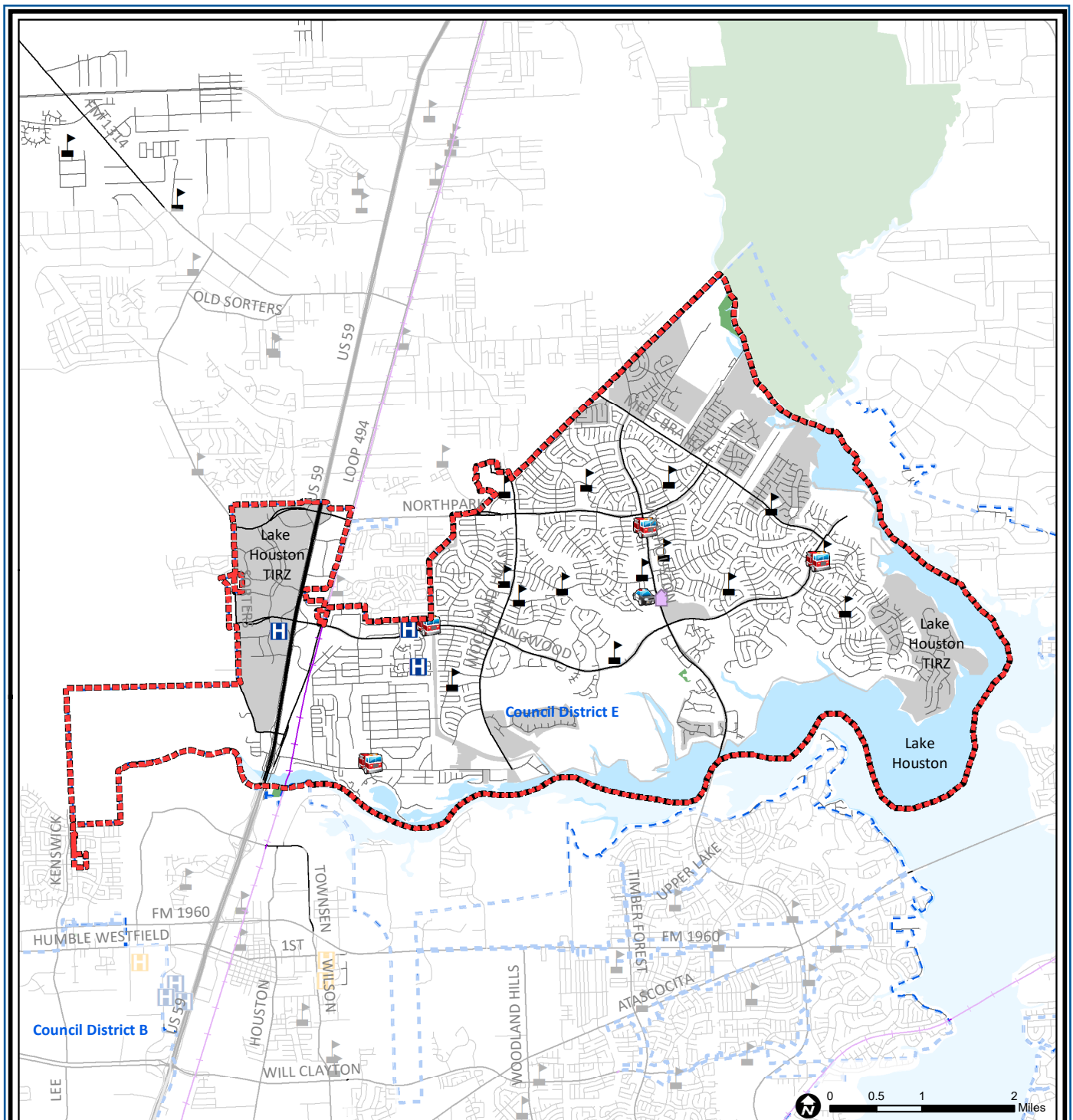
### Highlights

- ✓ Houston City Council District E
- ✓ Conroe Independent School District
- ✓ Humble Independent School District
- ✓ New Caney Independent School District
- ✓ Huffman Independent School District
- ✓ Aldine Independent School District
- ✓ 7 Police beats (includes bordering beats)
- ✓ 19,232 acres (30.1 sq. miles)



**PLANNING &  
DEVELOPMENT  
DEPARTMENT**





## Kingwood Area: Public Facilities

Super Neighborhood Boundary

Community Centers

Fire Station

Police Station

School

Airports

Harris County Hospitals

Private Hospitals

Other Health Facilities

Library

Rail Road

Metro Rail Stations

Metro Rail Line

Parks

TIRZ

Source: City of Houston GIS Database

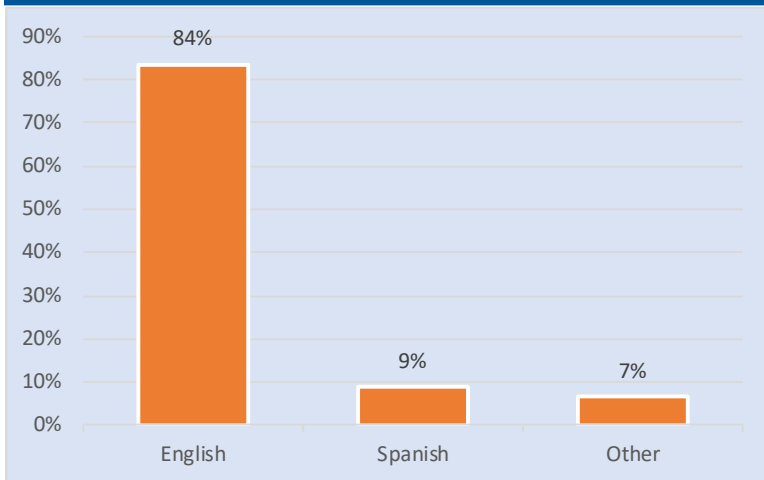
Date: May 2019

This map is made available for reference purposes only and should not be substituted for a survey product. The City of Houston will not accept liability of any kind in conjunction with its use.

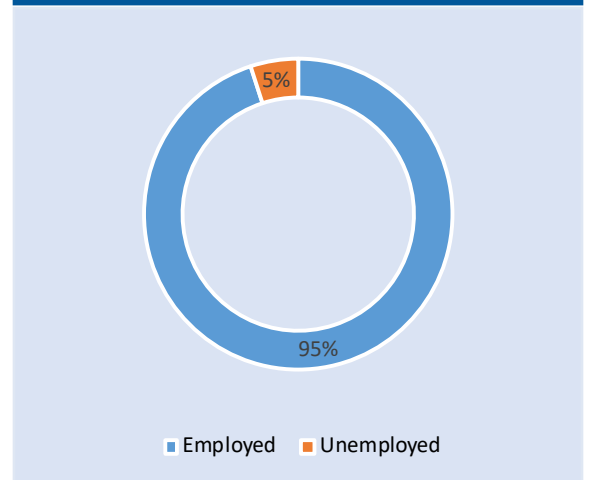


**PLANNING &  
DEVELOPMENT  
DEPARTMENT**

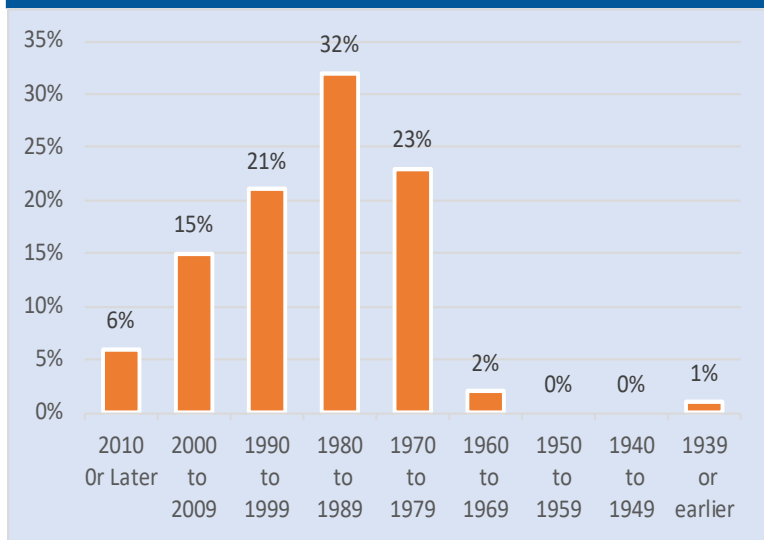
### Language Spoken at Home



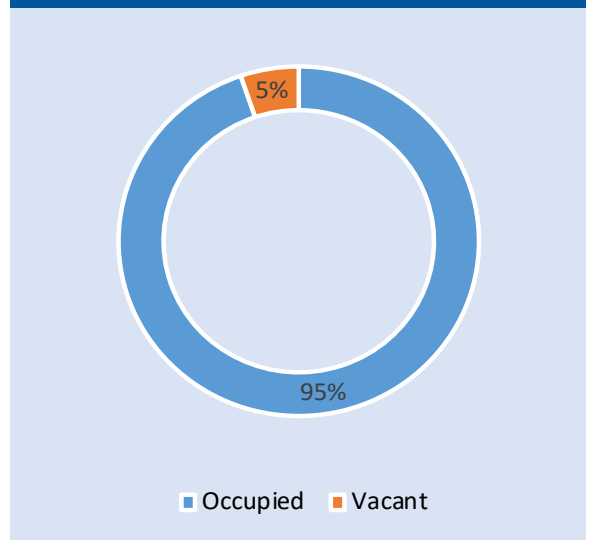
### Employment Status



### Housing Units by Year Built



### Housing Occupancy



Source: U.S. Census Bureau, 2000  
American Community Survey, 2013-2017 Estimates



**PLANNING &  
DEVELOPMENT  
DEPARTMENT**