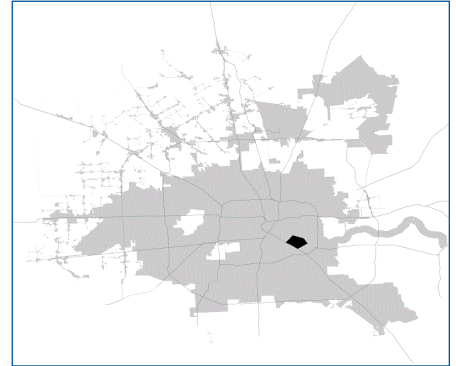


SUPER

Neighborhood

RESOURCE ASSESSMENT



	Super Neighborhood		Houston	
Pop. characteristics	2000	2017	2000	2017
Total population	14,132	12,701	1,953,631	2,267,336
Persons per sq. mile	5,011	4,503	3,166	3,394
Age of Population				
Under 5 years	10%	8%	8%	8%
5- 17 years	22%	19%	19%	17%
18- 64 years	61%	63%	64%	65%
65 and over	7%	10%	9%	10%
Ethnicity				
Non Hispanic Whites	12%	11%	31%	25%
Non Hispanic Blacks	1%	2%	25%	22%
Hispanics	86%	87%	37%	44%
Non Hispanic Asians	1%	0%	6%	7%
Non Hispanic Others	0%	0%	1%	2%
Income				
Under \$25,000	49%	37%	33%	26%
\$25,000 to \$49,999	29%	28%	31%	25%
\$50,000 to \$99,999	16%	23%	24%	26%
Over \$100,000	6%	12%	12%	23%
Median Household Income	\$42,012	\$39,525	\$36,616	\$49,399
Educational Status				
No Diploma	62%	34%	30%	22%
High School Diploma	19%	28%	20%	23%
Some College	12%	24%	23%	23%
Bachelor's or Higher	8%	14%	27%	32%
Housing and Households				
Total housing units	4,450	4,865	782,378	943,183
Occupied	92%	87%	92%	89%
Vacant	8%	13%	8%	11%
Total households	4,093	4,231	717,945	838,950
Family households	3,155	2,822	457,549	491,778
Median Housing Value	\$94,414	\$123,423	\$79,300	\$149,000

Description

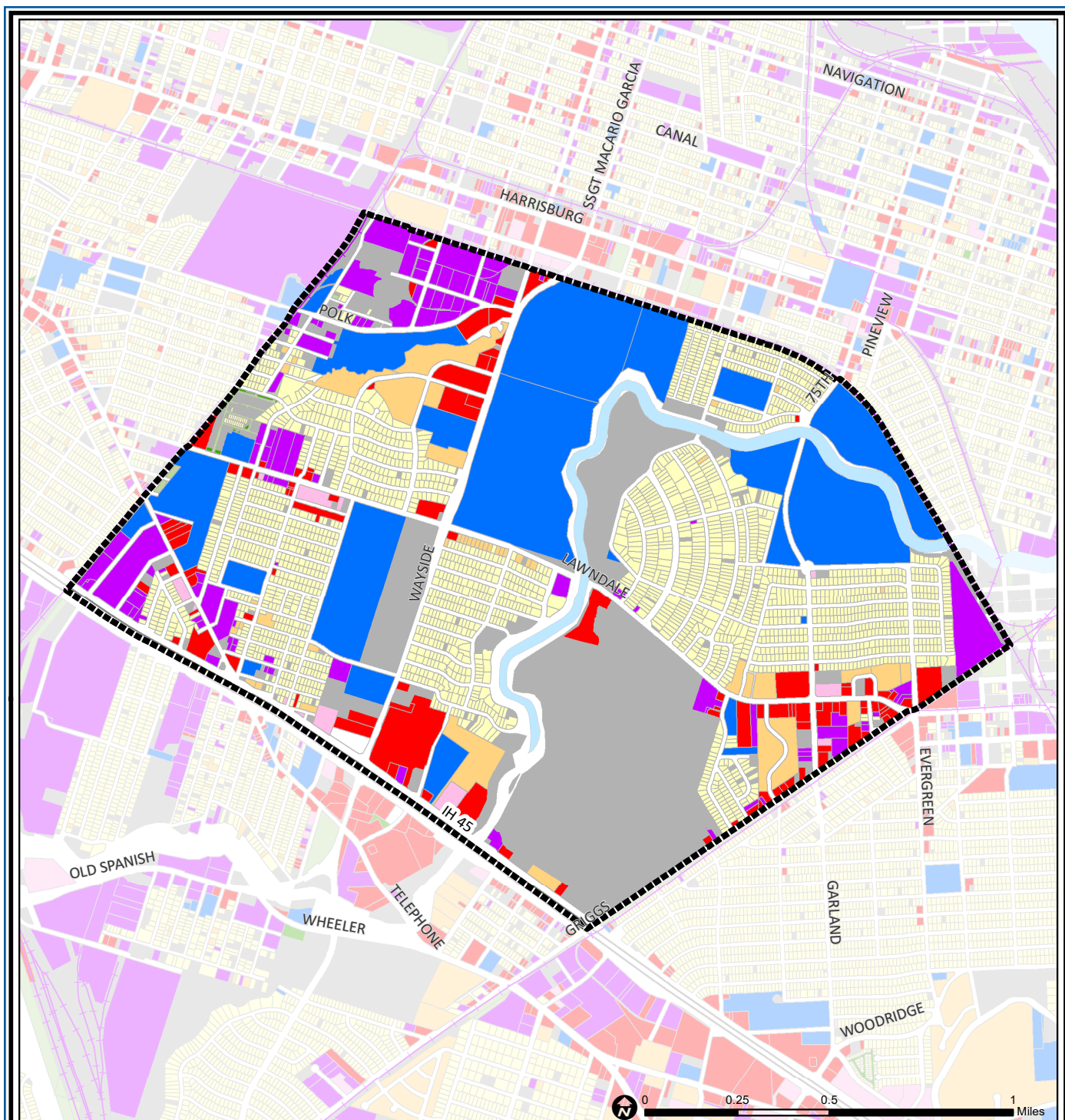
Lawndale/Wayside is a collection of neighborhoods which still reflect the area's origins as a prestigious east side neighborhood. At that time, the municipal Wortham Golf Center was the City's first country club, what is now the Houston Country Club (established in 1908). The adjacent heavily wooded Country Club and Idylwood neighborhoods have remained attractive. The areas of Forest Hill and Mason Park are shady, middle class havens with curving streets and large lots. The presence of wooded preserves such as the large Forest Park Cemetery, Villa De Matel convent, Mason Park and Wortham Golf Center have helped to maintain the area's beauty. The entire neighborhood is within the Greater East End Management District.

Highlights

- ✓ Houston City Council District I
- ✓ Houston Independent School District
- ✓ 3 Police beats (includes bordering beats)
- ✓ 1,805 acres (2.82 sq. miles)



**PLANNING &
DEVELOPMENT
DEPARTMENT**



Lawndale / Wayside: Land Use

Freeway	Commercial	Parks and Open Space
Rail Road	Office	Undeveloped
Super Neighborhood Boundary	Industrial	Agricultural Production
Single-family Residential	Public and Institutional	Open Water
Multi-family Residential	Transportation and Utilities	Unknown

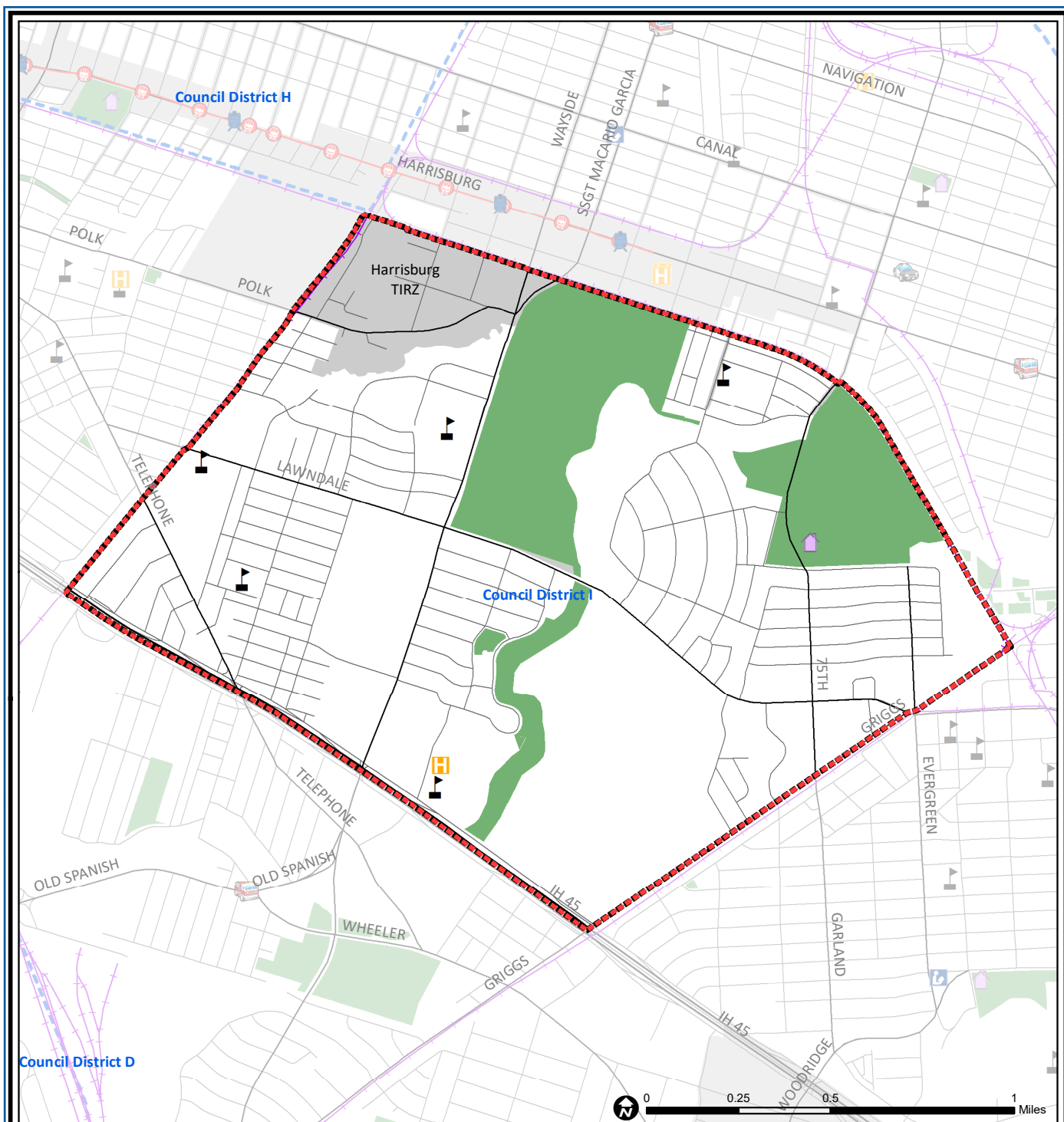
Source: City of Houston GIS Database,
Harris County Appraisal District

Date: May 21, 2019

This map is made available for reference purposes only and should not be substituted for a survey product. The City of Houston will not accept liability of any kind in conjunction with its use.



**PLANNING &
DEVELOPMENT
DEPARTMENT**



Lawndale / Wayside: Public Facilities

Source: City of Houston GIS Database

Date: May 2019

This map is made available for reference purposes only and should not be substituted for a survey product. The City of Houston will not accept liability of any kind in conjunction with its use.

Super Neighborhood Boundary

Airports

Rail Road

Community Centers

Harris County Hospitals

Metro Rail Stations

Fire Station

Private Hospitals

Metro Rail Line

Police Station

Other Health Facilities

Parks

School

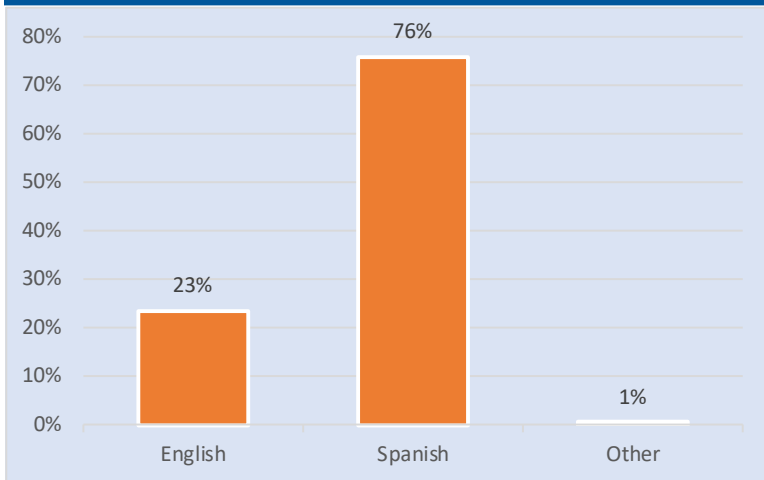
Library

TIRZ

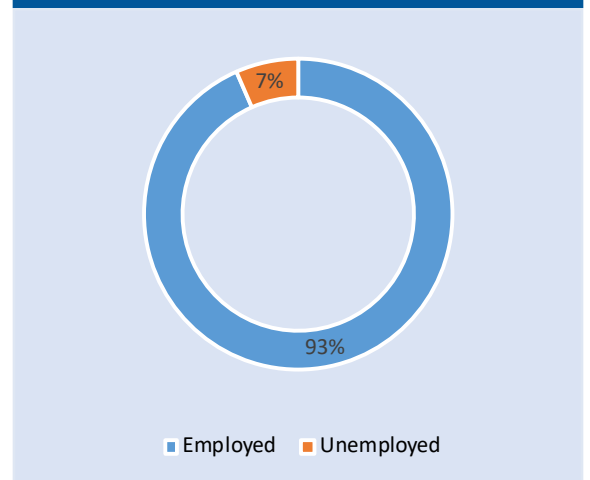


**PLANNING &
DEVELOPMENT
DEPARTMENT**

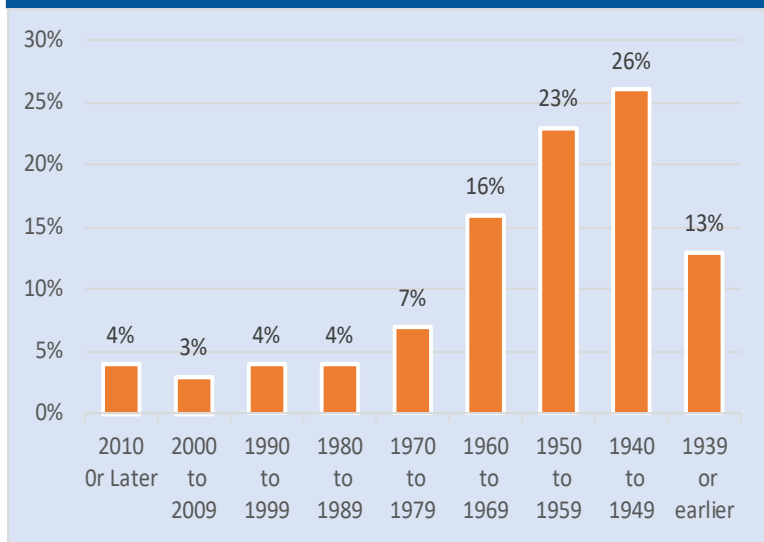
Language Spoken at Home



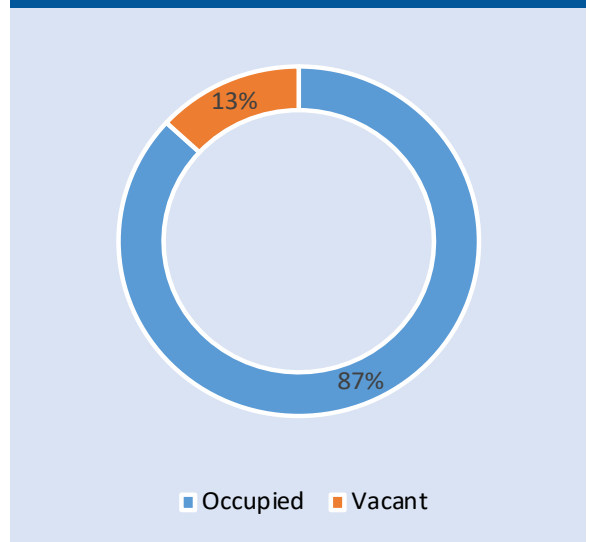
Employment Status



Housing Units by Year Built



Housing Occupancy



Source: U.S. Census Bureau, 2000
American Community Survey, 2013-2017 Estimates



**PLANNING &
DEVELOPMENT
DEPARTMENT**