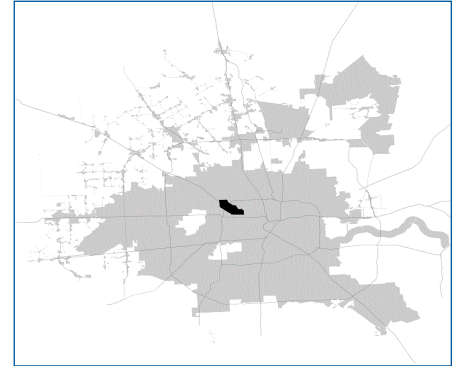


SUPER

Neighborhood

RESOURCE ASSESSMENT



	Super Neighborhood		Houston	
Pop. characteristics	2000	2017	2000	2017
Total population	11,655	13,501	1,953,631	2,267,336
Persons per sq. mile	3,256	3,843	3,166	3,394
Age of Population				
Under 5 years	7%	7%	8%	8%
5- 17 years	12%	11%	19%	17%
18- 64 years	66%	72%	64%	65%
65 and over	15%	10%	9%	10%
Ethnicity				
Non Hispanic Whites	54%	47%	31%	25%
Non Hispanic Blacks	6%	5%	25%	22%
Hispanics	36%	42%	37%	44%
Non Hispanic Asians	2%	4%	6%	7%
Non Hispanic Others	1%	2%	1%	2%
Income				
Under \$25,000	30%	14%	33%	26%
\$25,000 to \$49,999	32%	26%	31%	25%
\$50,000 to \$99,999	28%	25%	24%	26%
Over \$100,000	11%	35%	12%	23%
Median Household Income	\$38,783	\$72,557	\$36,616	\$49,399
Educational Status				
No Diploma	26%	10%	30%	22%
High School Diploma	23%	18%	20%	23%
Some College	23%	24%	23%	23%
Bachelor's or Higher	28%	48%	27%	32%
Housing and Households				
Total housing units	5,705	6,698	782,378	943,183
Occupied	95%	93%	92%	89%
Vacant	5%	7%	8%	11%
Total households	5,418	6,230	717,945	838,950
Family households	2,880	3,122	457,549	491,778
Median Housing Value	\$120,541	\$311,331	\$79,300	\$149,000

Description

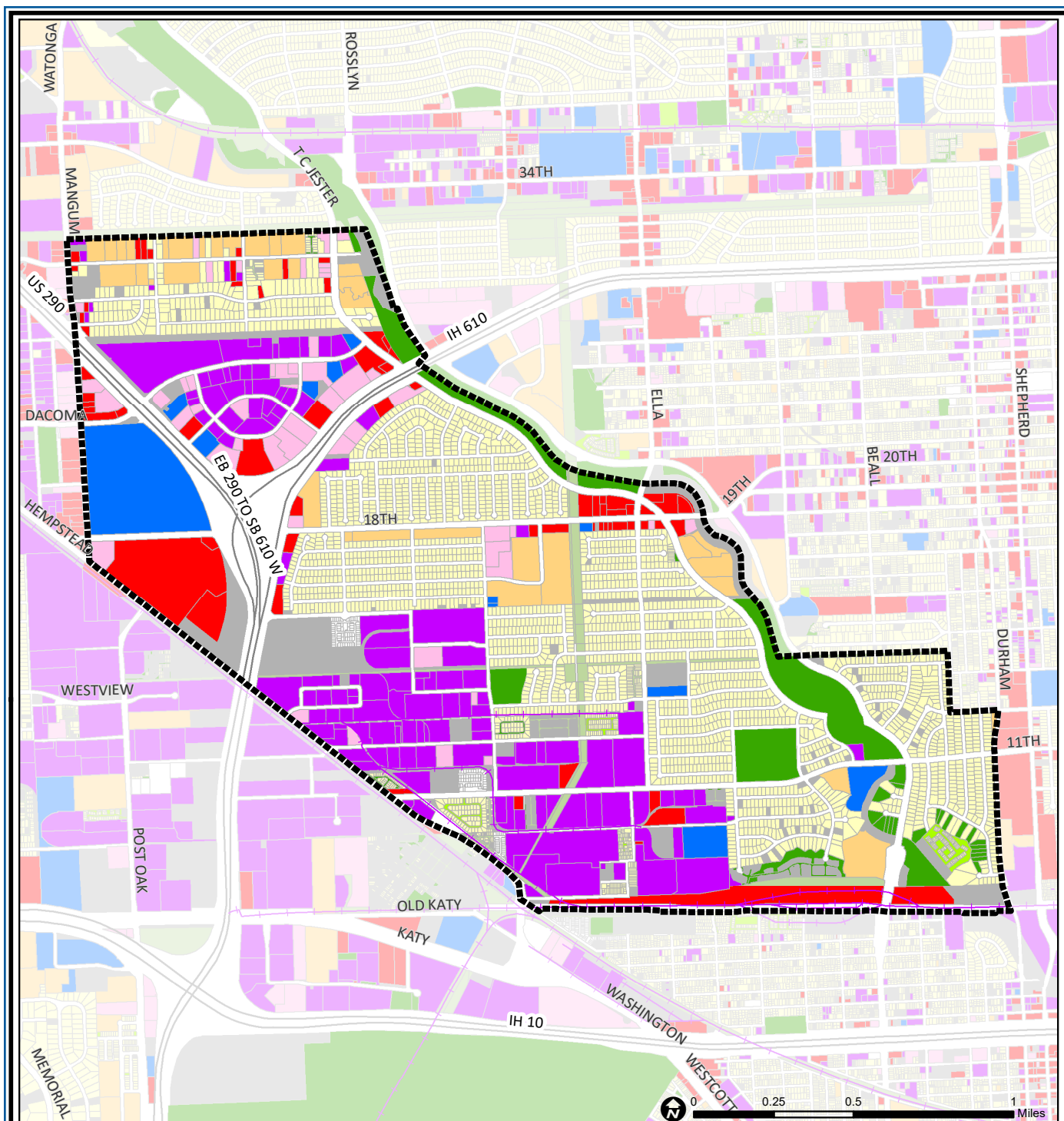
Lazy Brook and Timbergrove are deed-restricted subdivisions located along the wooded banks of White Oak Bayou in the near northwest quadrant of the city. In the pre-freeway period after World War II, this area remained undeveloped while suburban development was exploding in every other direction. This community of ranch style brick homes built in the 1950s and 1960s is easily accessible to Loop 610. The northwestern corner of the area, located outside of Loop 610 on both sides of US 290, includes Brookwood, a large lot subdivision, the Brookhollow business park, Northwest Mall and HISD's Delmar Stadium complex.

Highlights

- ✓ Houston City Council Districts C & A
- ✓ Houston Independent School District
- ✓ 5 Police beats (includes bordering beats)
- ✓ 2,288 acres (3.58 sq. miles)



**PLANNING &
DEVELOPMENT
DEPARTMENT**



Lazybrook / Timbergrove: Land Use

Freeway	Commercial	Parks and Open Space
Rail Road	Office	Undeveloped
Super Neighborhood Boundary	Industrial	Agricultural Production
Single-family Residential	Public and Institutional	Open Water
Multi-family Residential	Transportation and Utilities	Unknown

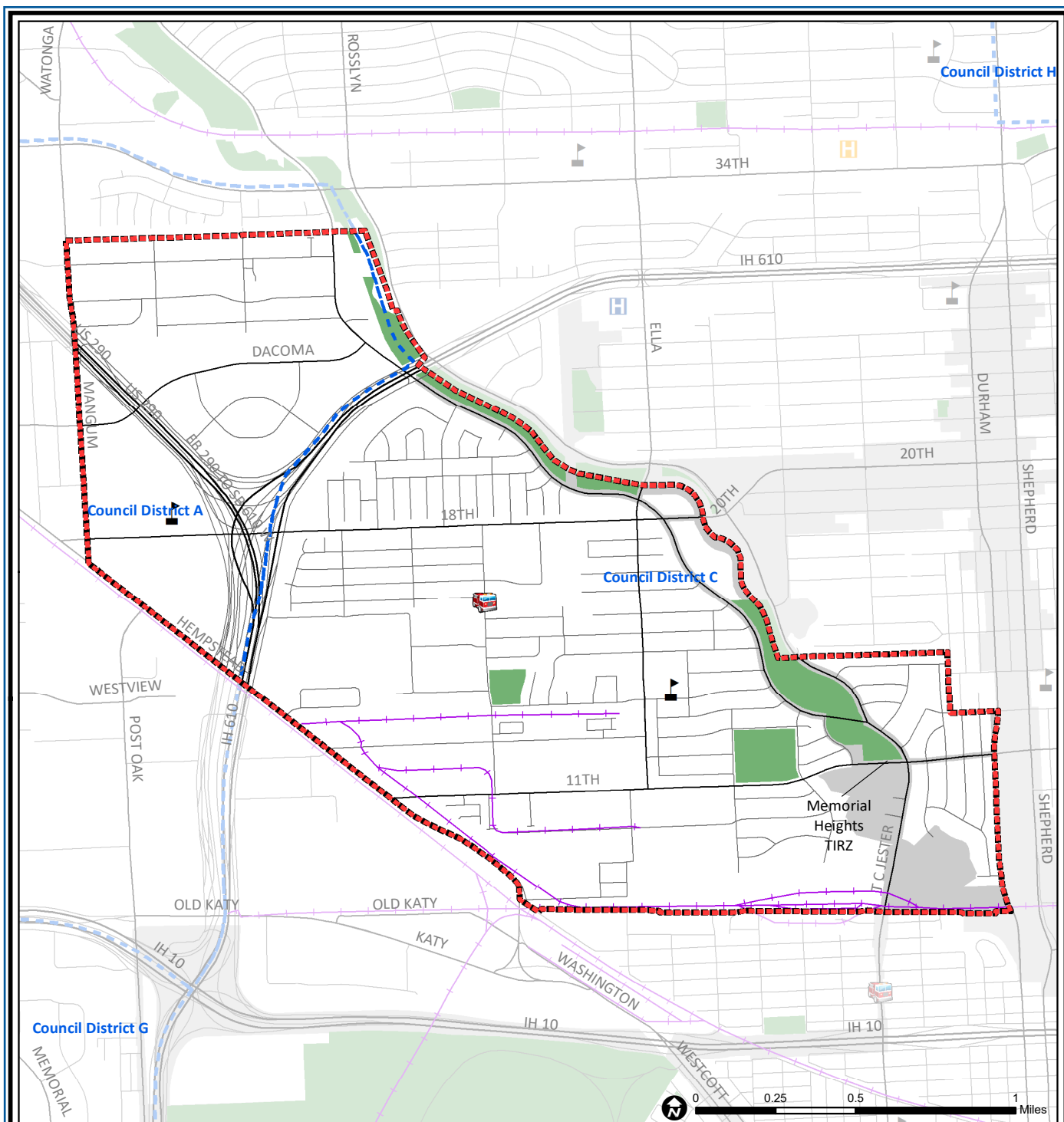
Source: City of Houston GIS Database,
Harris County Appraisal District

Date: May 21, 2019

This map is made available for reference purposes only and should not be substituted for a survey product. The City of Houston will not accept liability of any kind in conjunction with its use.



**PLANNING &
DEVELOPMENT
DEPARTMENT**



Lazybrook / Timbergrove: Public Facilities

Source: City of Houston GIS Database

Date: May 2019

This map is made available for reference purposes only and should not be substituted for a survey product. The City of Houston will not accept liability of any kind in conjunction with its use.



**PLANNING &
DEVELOPMENT
DEPARTMENT**

Super Neighborhood Boundary

Community Centers

Fire Station

Police Station

School

Airports

Harris County Hospitals

Private Hospitals

Other Health Facilities

Library

Rail Road

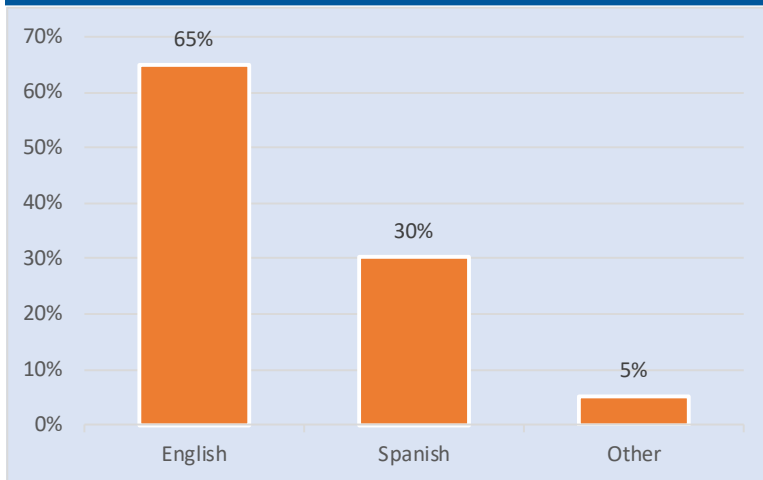
Metro Rail Stations

Metro Rail Line

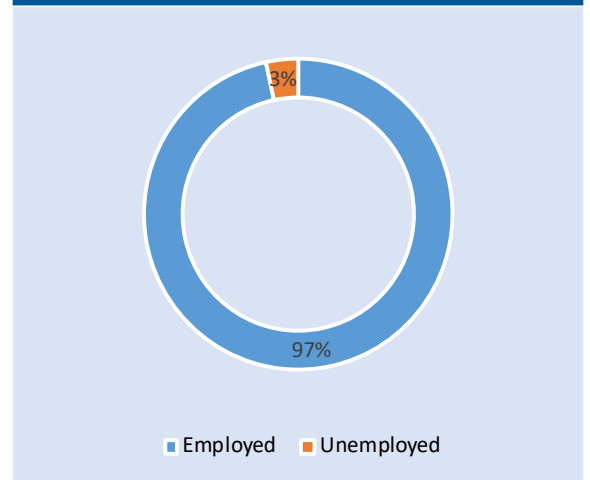
Parks

TIRZ

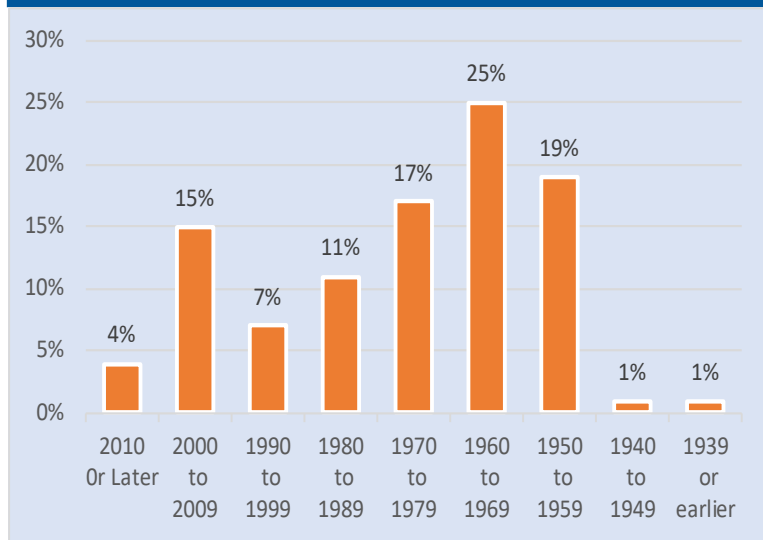
Language Spoken at Home



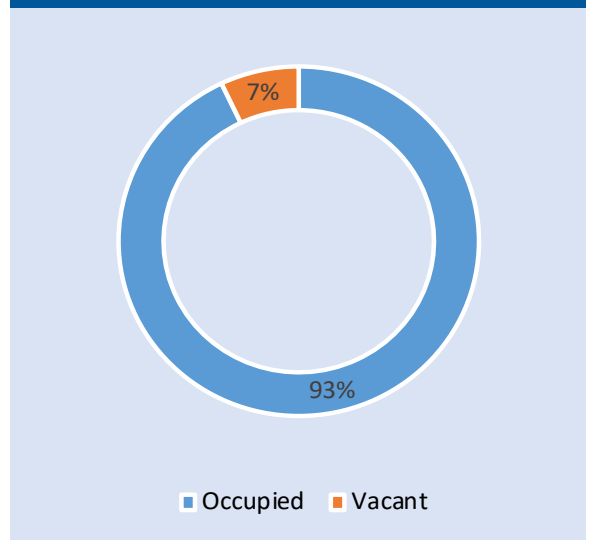
Employment Status



Housing Units by Year Built



Housing Occupancy



Source: U.S. Census Bureau, 2000
American Community Survey, 2013-2017 Estimates



**PLANNING &
DEVELOPMENT
DEPARTMENT**