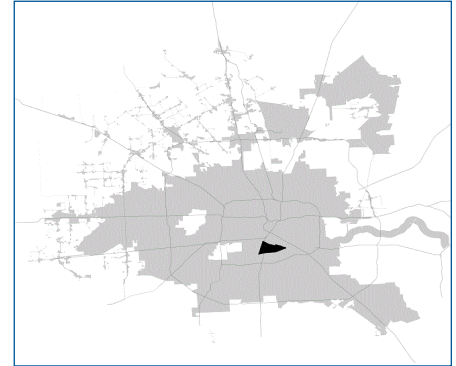


# SUPER

## Neighborhood

### RESOURCE ASSESSMENT



	Super Neighborhood		Houston	
Pop. characteristics	2000	2017	2000	2017
Total population	13,997	18,816	1,953,631	2,267,336
Persons per sq. mile	4,153	5,581	3,166	3,394
<b>Age of Population</b>				
Under 5 years	6%	4%	8%	8%
5- 17 years	16%	9%	19%	17%
18- 64 years	60%	76%	64%	65%
65 and over	19%	11%	9%	10%
<b>Ethnicity</b>				
Non Hispanic Whites	9%	21%	31%	25%
Non Hispanic Blacks	80%	58%	25%	22%
Hispanics	5%	10%	37%	44%
Non Hispanic Asians	4%	8%	6%	7%
Non Hispanic Others	2%	3%	1%	2%
<b>Income</b>				
Under \$25,000	41%	32%	33%	26%
\$25,000 to \$49,999	26%	19%	31%	25%
\$50,000 to \$99,999	23%	23%	24%	26%
Over \$100,000	10%	26%	12%	23%
<b>Median Household Income</b>	\$39,615	\$56,622	\$36,616	\$49,399
<b>Educational Status</b>				
No Diploma	16%	7%	30%	22%
High School Diploma	18%	17%	20%	23%
Some College	24%	28%	23%	23%
Bachelor's or Higher	43%	48%	27%	32%
<b>Housing and Households</b>				
Total housing units	6,721	8,001	782,378	943,183
Occupied	87%	81%	92%	89%
Vacant	13%	19%	8%	11%
Total households	5,859	6,521	717,945	838,950
Family households	3,215	3,128	457,549	491,778
Median Housing Value	\$122,720	\$244,057	\$79,300	\$149,000

### Description

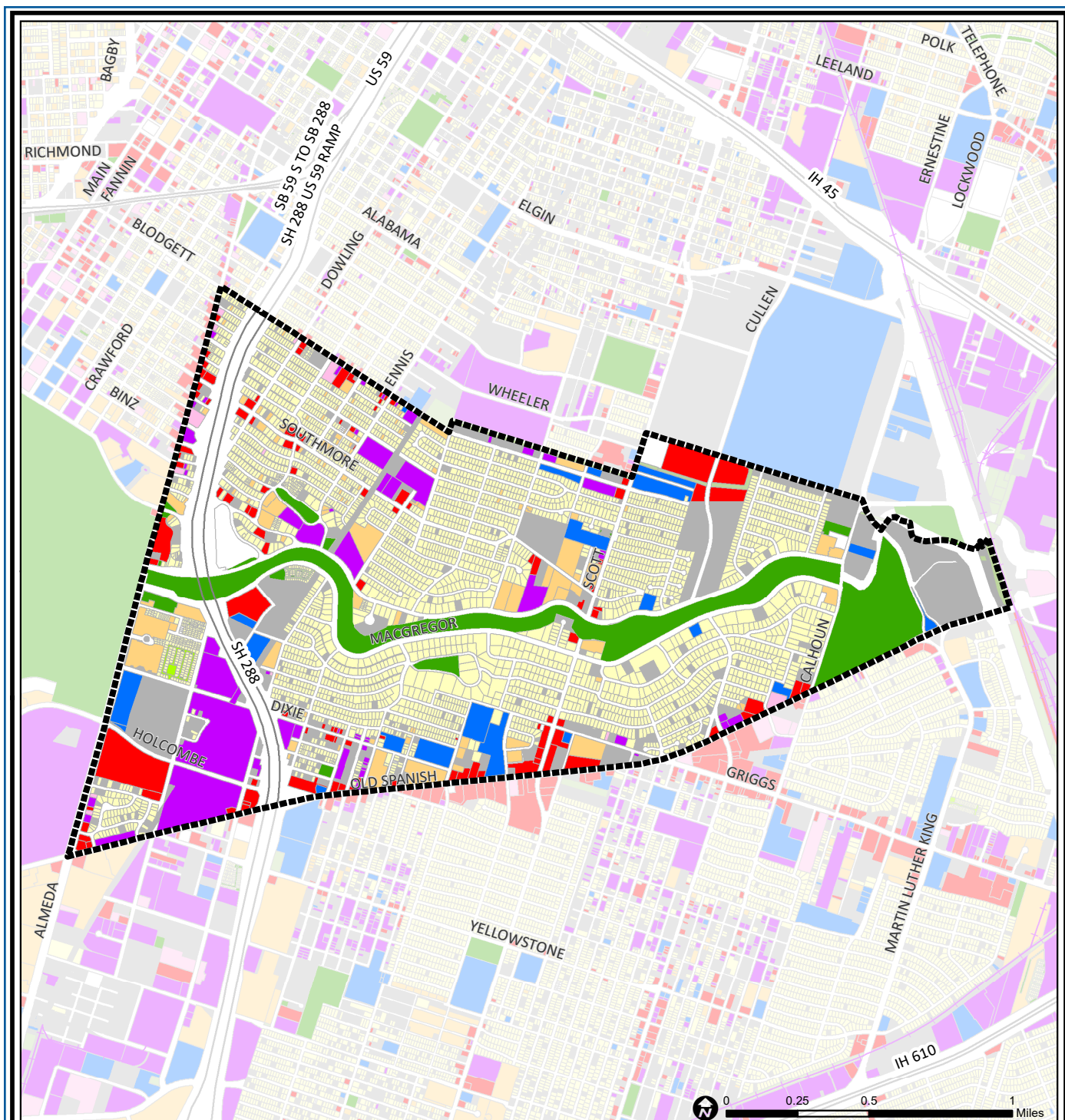
MacGregor is a collection of neighborhoods on both sides of Brays Bayou east of the Texas Medical Center. The area became home to many of Houston's African-American professionals during the 1950s and 1960s. At that time some large homes were demolished or converted to commercial uses. As a result some parts of the community include stately homes interspersed with small motels and deteriorated apartments. Some subdivisions, notably Timbercrest, University Oaks and Riverside Terrace along South MacGregor, retain their gracious residential characteristics and contain numerous examples of outstanding architecture.

### Highlights

- ✓ Houston City Council District D
- ✓ Houston Independent School District
- ✓ 5 Police beats (includes bordering beats)
- ✓ 2,157 acres (3.37 sq. miles)



**PLANNING &  
DEVELOPMENT  
DEPARTMENT**



## MacGregor: Land Use

Freeway	Commercial	Parks and Open Space
Rail Road	Office	Undeveloped
Super Neighborhood Boundary	Industrial	Agricultural Production
Single-family Residential	Public and Institutional	Open Water
Multi-family Residential	Transportation and Utilities	Unknown

Source: City of Houston GIS Database,  
Harris County Appraisal District

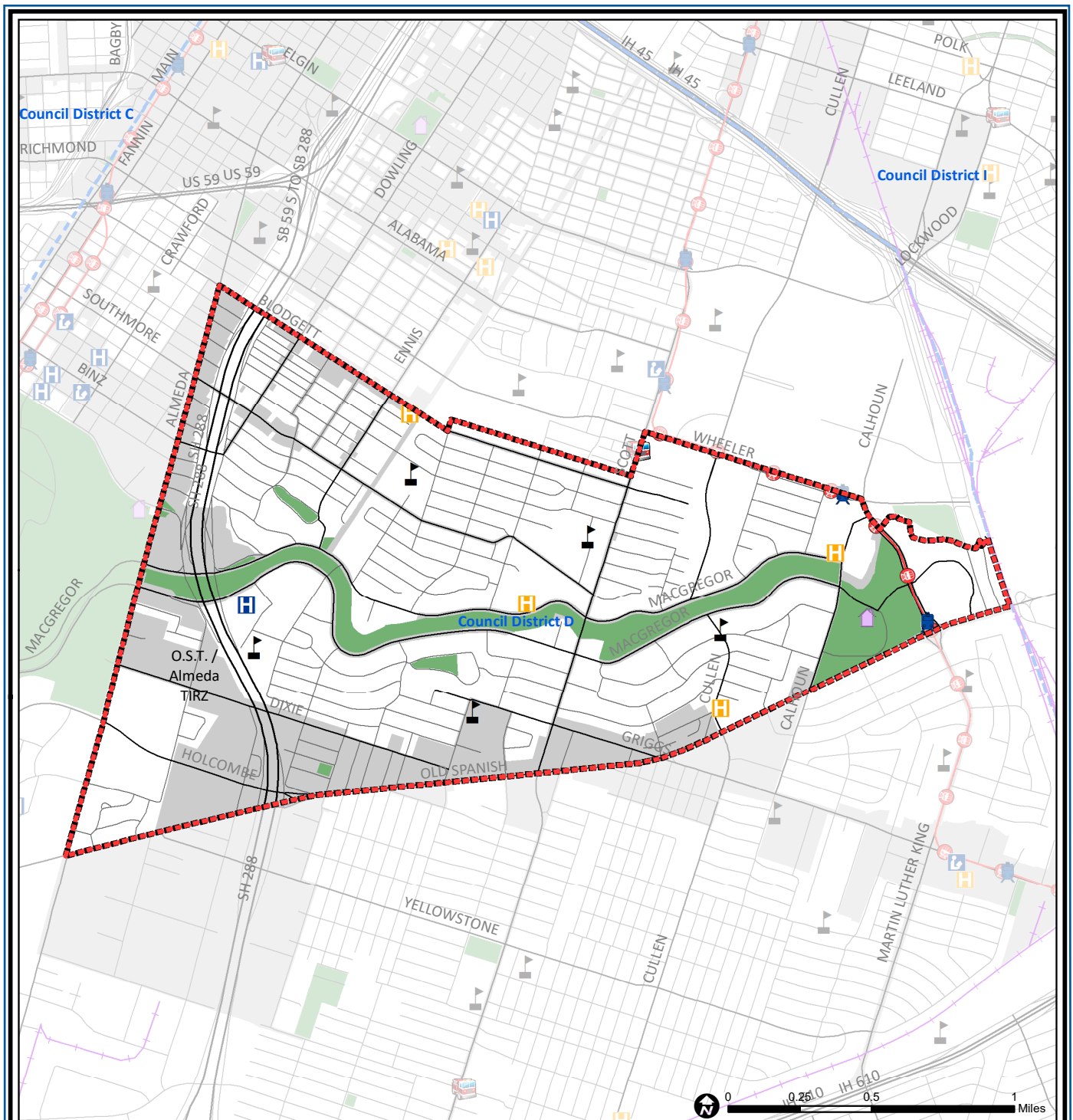
Date: May 24, 2019

This map is made available for reference purposes only and should not be substituted for a survey product. The City of Houston will not accept liability of any kind in conjunction with its use.



**PLANNING &  
DEVELOPMENT  
DEPARTMENT**





## MacGregor: Public Facilities

Source: City of Houston GIS Database

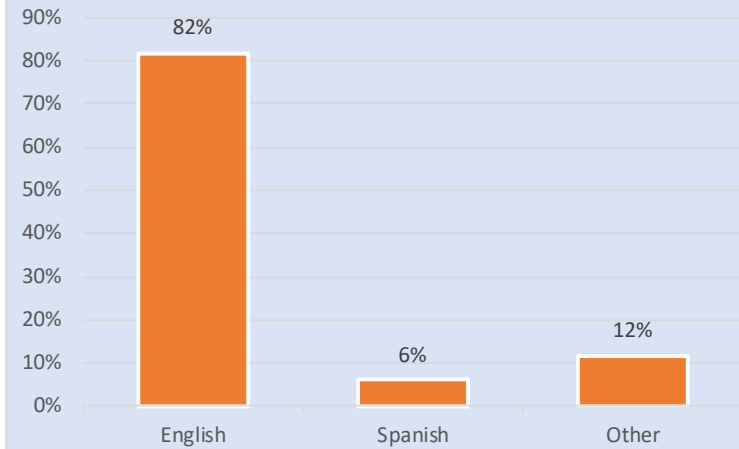
Date: June 2019

This map is made available for reference purposes only and should not be substituted for a survey product. The City of Houston will not accept liability of any kind in conjunction with its use.

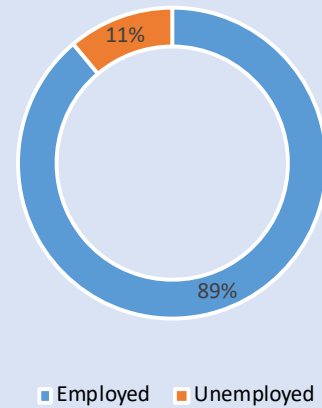


**PLANNING &  
DEVELOPMENT  
DEPARTMENT**

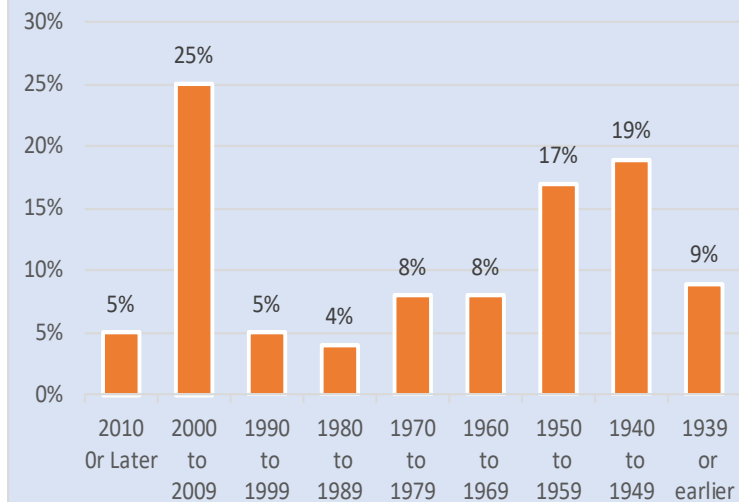
### Language Spoken at Home



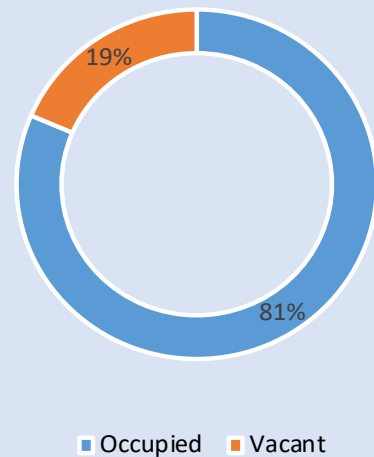
### Employment Status



### Housing Units by Year Built



### Housing Occupancy



Source: U.S. Census Bureau, 2000  
American Community Survey, 2013-2017 Estimates



**PLANNING &  
DEVELOPMENT  
DEPARTMENT**