

# SUPER

## Neighborhood

### RESOURCE ASSESSMENT



	Super Neighborhood		Houston	
<b>Pop. characteristics</b>	<b>2000</b>	<b>2017</b>	<b>2000</b>	<b>2017</b>
Total population	21,302	16,370	1,953,631	2,267,336
Persons per sq. mile	8,420	6,471	3,166	3,394
<b>Age of Population</b>				
Under 5 years	10%	6%	8%	8%
5- 17 years	23%	23%	19%	17%
18- 64 years	59%	60%	64%	65%
65 and over	8%	11%	9%	10%
<b>Ethnicity</b>				
Non Hispanic Whites	3%	3%	31%	25%
Non Hispanic Blacks	1%	1%	25%	22%
Hispanics	96%	95%	37%	44%
Non Hispanic Asians	0%	1%	6%	7%
Non Hispanic Others	0%	0%	1%	2%
<b>Income</b>				
Under \$25,000	52%	39%	33%	26%
\$25,000 to \$49,999	33%	30%	31%	25%
\$50,000 to \$99,999	13%	25%	24%	26%
Over \$100,000	2%	6%	12%	23%
<b>Median Household Income</b>	\$14,875	\$30,284	\$36,616	\$49,399
<b>Educational Status</b>				
No Diploma	71%	52%	30%	22%
High School Diploma	18%	23%	20%	23%
Some College	8%	18%	23%	23%
Bachelor's or Higher	2%	7%	27%	32%
<b>Housing and Households</b>				
Total housing units	6,430	6,245	782,378	943,183
Occupied	91%	79%	92%	89%
Vacant	9%	21%	8%	11%
Total households	5,860	4,916	717,945	838,950
Family households	4,650	3,843	457,549	491,778
Median Housing Value	\$24,915	\$81,457	\$79,300	\$149,000

### Description

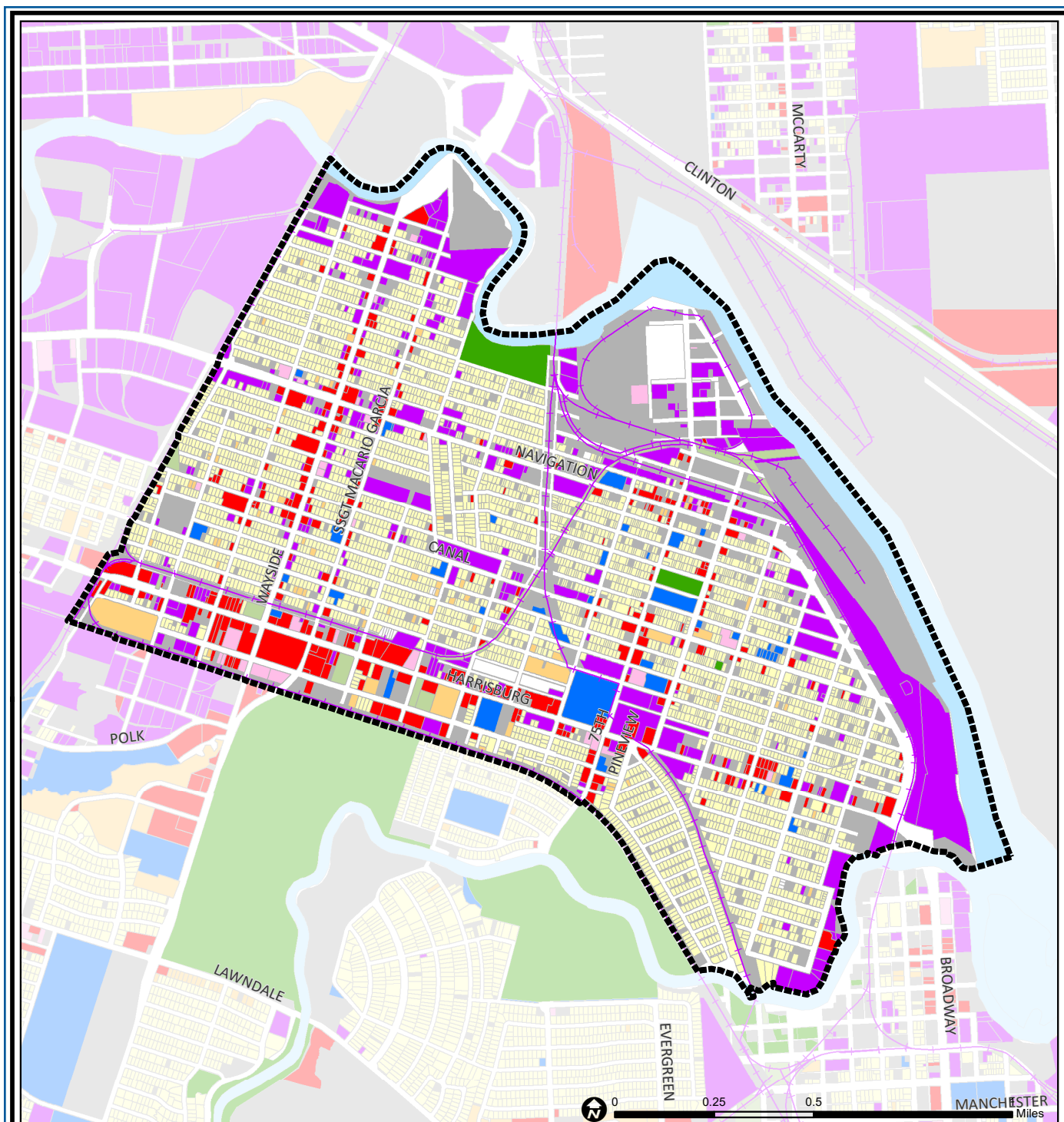
Magnolia Park borders the Houston Ship Channel just south of the Turning Basin, the location of some of the first wharves built when Houston became a deep water port in 1913. The community thrived as a home for workers on the docks and in industries lining the channel. For a time it was even an incorporated municipality. As early as the 1930s, Magnolia Park was developing an identity as a center of Houston's Hispanic community. This continues, especially around recently revived commercial areas near Harrisburg and Wayside.

### Highlights

- ✓ Houston City Council District I
- ✓ Houston Independent School District
- ✓ 4 Police beats (includes bordering beats)
- ✓ 1,619 acres (2.53 sq. miles)



**PLANNING &  
DEVELOPMENT  
DEPARTMENT**



## Magnolia Park: Land Use

Freeway	Commercial	Parks and Open Space
Rail Road	Office	Undeveloped
Super Neighborhood Boundary	Industrial	Agricultural Production
Single-family Residential	Public and Institutional	Open Water
Multi-family Residential	Transportation and Utilities	Unknown

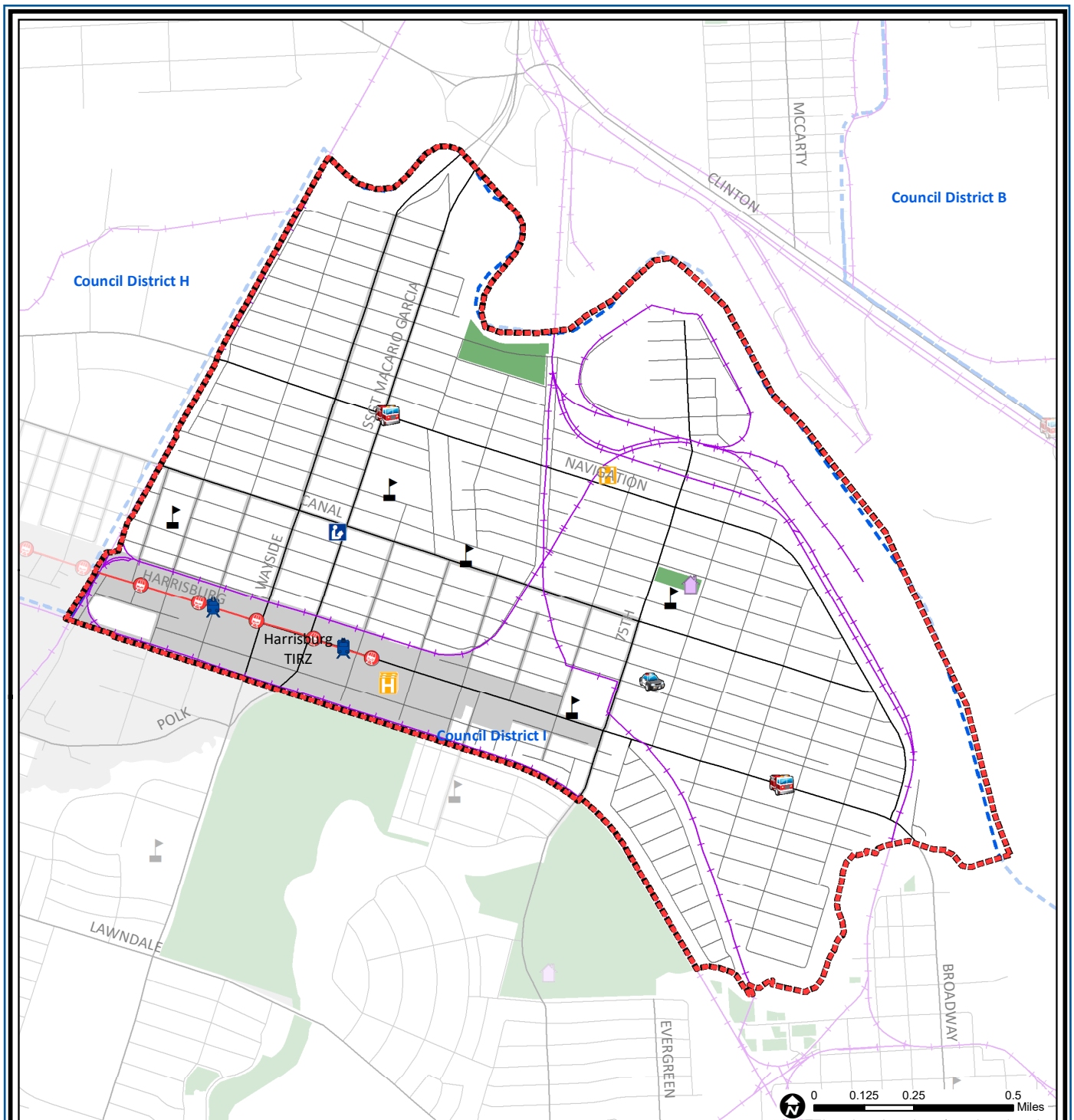
Source: City of Houston GIS Database,  
Harris County Appraisal District

Date: May 24, 2019

This map is made available for reference purposes only and should not be substituted for a survey product. The City of Houston will not accept liability of any kind in conjunction with its use.



**PLANNING &  
DEVELOPMENT  
DEPARTMENT**



## Magnolia Park: Public Facilities

Source: City of Houston GIS Database

Date: May 2019

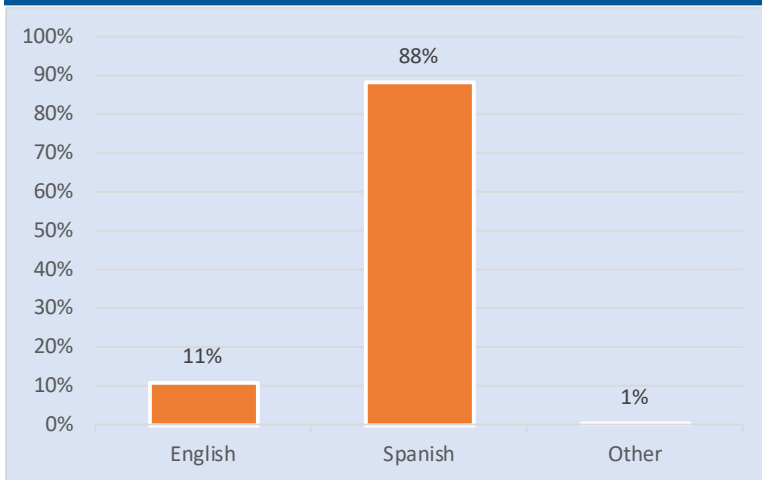
This map is made available for reference purposes only and should not be substituted for a survey product. The City of Houston will not accept liability of any kind in conjunction with its use.

- |                             |                         |                     |
|-----------------------------|-------------------------|---------------------|
| Super Neighborhood Boundary | Airports                | Rail Road           |
| Community Centers           | Harris County Hospitals | Metro Rail Stations |
| Fire Station                | Private Hospitals       | Metro Rail Line     |
| Police Station              | Other Health Facilities | Parks               |
| School                      | Library                 | TIRZ                |

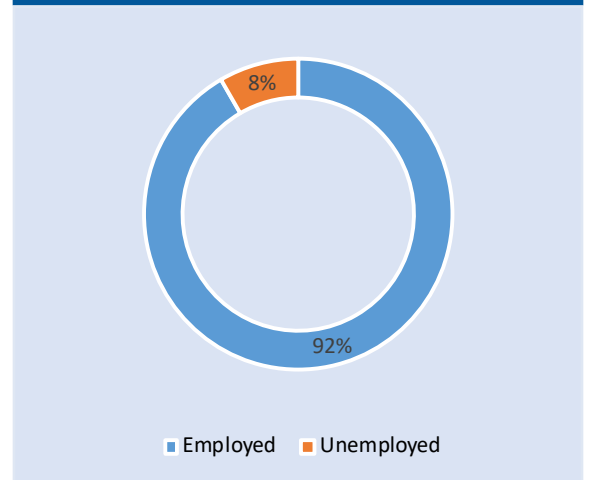


**PLANNING &  
DEVELOPMENT  
DEPARTMENT**

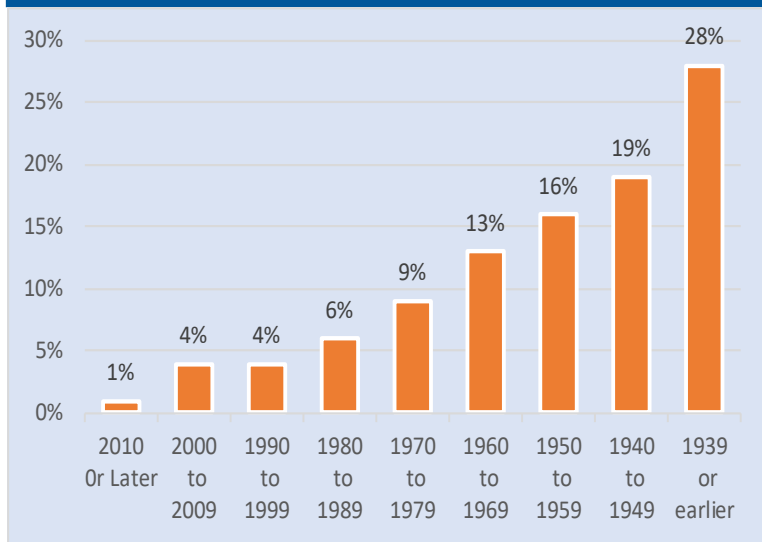
### Language Spoken at Home



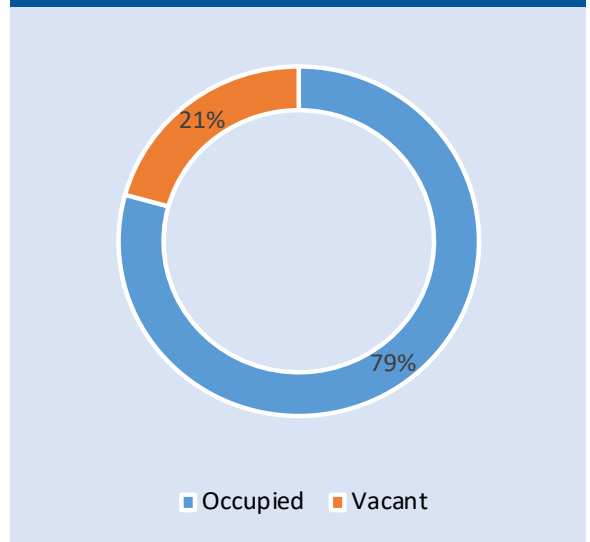
### Employment Status



### Housing Units by Year Built



### Housing Occupancy



Source: U.S. Census Bureau, 2000  
American Community Survey, 2013-2017 Estimates



**PLANNING &  
DEVELOPMENT  
DEPARTMENT**