

SUPER

Neighborhood

RESOURCE ASSESSMENT



	Super Neighborhood		Houston	
Pop. characteristics	2000	2017	2000	2017
Total population	2,358	2,995	1,953,631	2,267,336
Persons per sq. mile	2,015	1,709	3,166	3,394
Age of Population				
Under 5 years	5%	5%	8%	8%
5- 17 years	7%	3%	19%	17%
18- 64 years	75%	76%	64%	65%
65 and over	14%	16%	9%	10%
Ethnicity				
Non Hispanic Whites	47%	57%	31%	25%
Non Hispanic Blacks	8%	12%	25%	22%
Hispanics	10%	13%	37%	44%
Non Hispanic Asians	33%	15%	6%	7%
Non Hispanic Others	2%	3%	1%	2%
Income				
Under \$25,000	32%	20%	33%	26%
\$25,000 to \$49,999	28%	10%	31%	25%
\$50,000 to \$99,999	26%	31%	24%	26%
Over \$100,000	14%	39%	12%	23%
Median Household Income	\$53,582	\$80,388	\$36,616	\$49,399
Educational Status				
No Diploma	11%	4%	30%	22%
High School Diploma	12%	5%	20%	23%
Some College	14%	13%	23%	23%
Bachelor's or Higher	63%	78%	27%	32%
Housing and Households				
Total housing units	1,134	1,673	782,378	943,183
Occupied	94%	86%	92%	89%
Vacant	6%	14%	8%	11%
Total households	1,061	1,463	717,945	838,950
Family households	485	596	457,549	491,778
Median Housing Value	\$256,265	\$471,344	\$79,300	\$149,000

Description

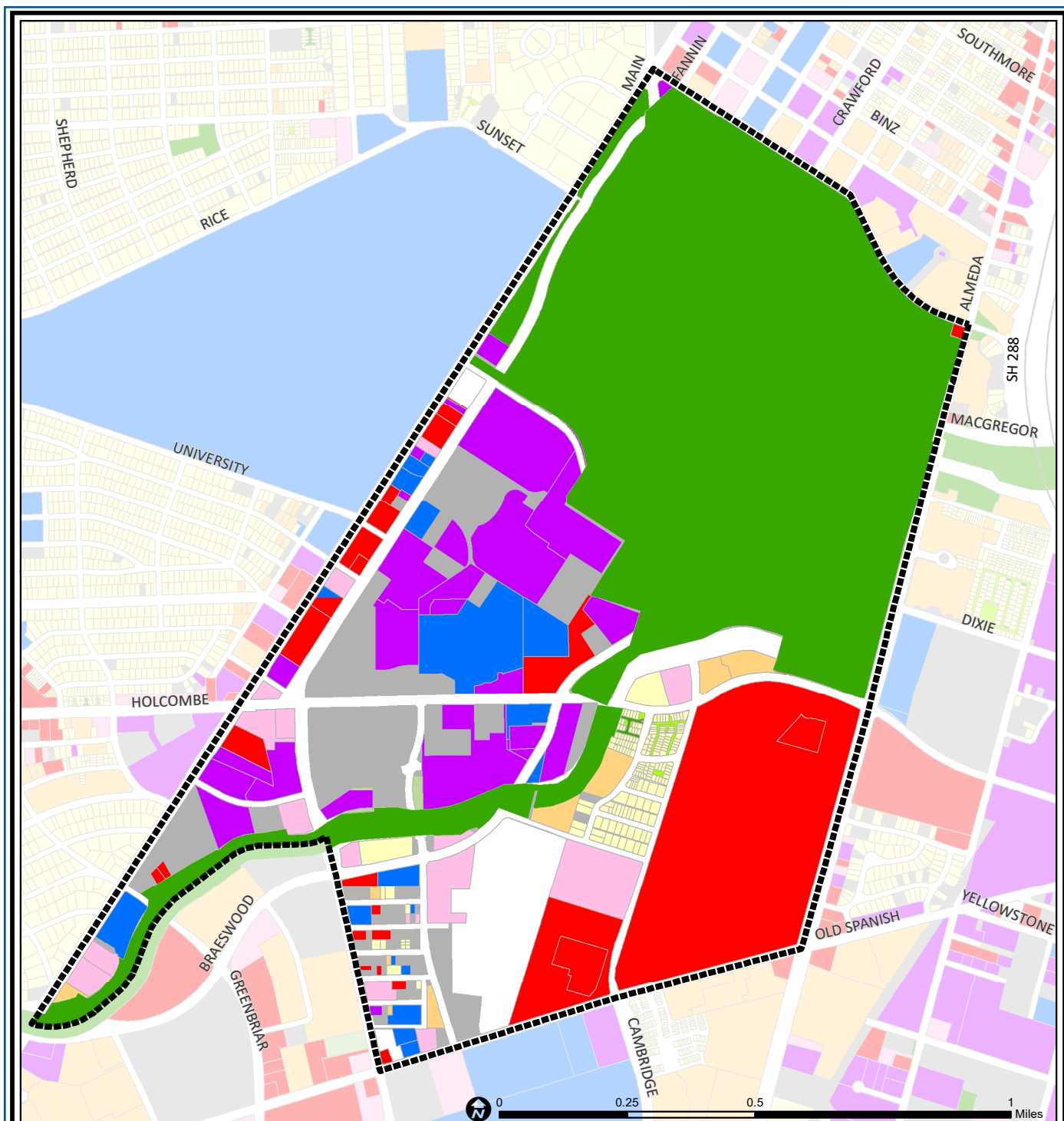
Medical Center Area includes the original campus of the Texas Medical Center, Hermann Park, from which it was carved, and a fringe of private development. The Texas Medical Center itself has expanded its campus far beyond the original site north of Holcombe and east of Fannin, and has replaced the early restaurants and shopping centers on Main Street with high rise hotels, outpatient clinics and professional buildings. Hermann Park, home of the city's zoo, amphitheater, and museum of natural history is bordered on the north by several high rise condominiums, a private hospital and a medical museum.

Highlights

- ✓ Houston City Council Districts D & K
- ✓ Houston Independent School District
- ✓ 3 Police beats (includes bordering beats)
- ✓ 746 acres (1.17 sq. miles)



**PLANNING &
DEVELOPMENT
DEPARTMENT**



Medical Center Area: Land Use

Freeway	Commercial	Parks and Open Space
Rail Road	Office	Undeveloped
Super Neighborhood Boundary	Industrial	Agricultural Production
Single-family Residential	Public and Institutional	Open Water
Multi-family Residential	Transportation and Utilities	Unknown

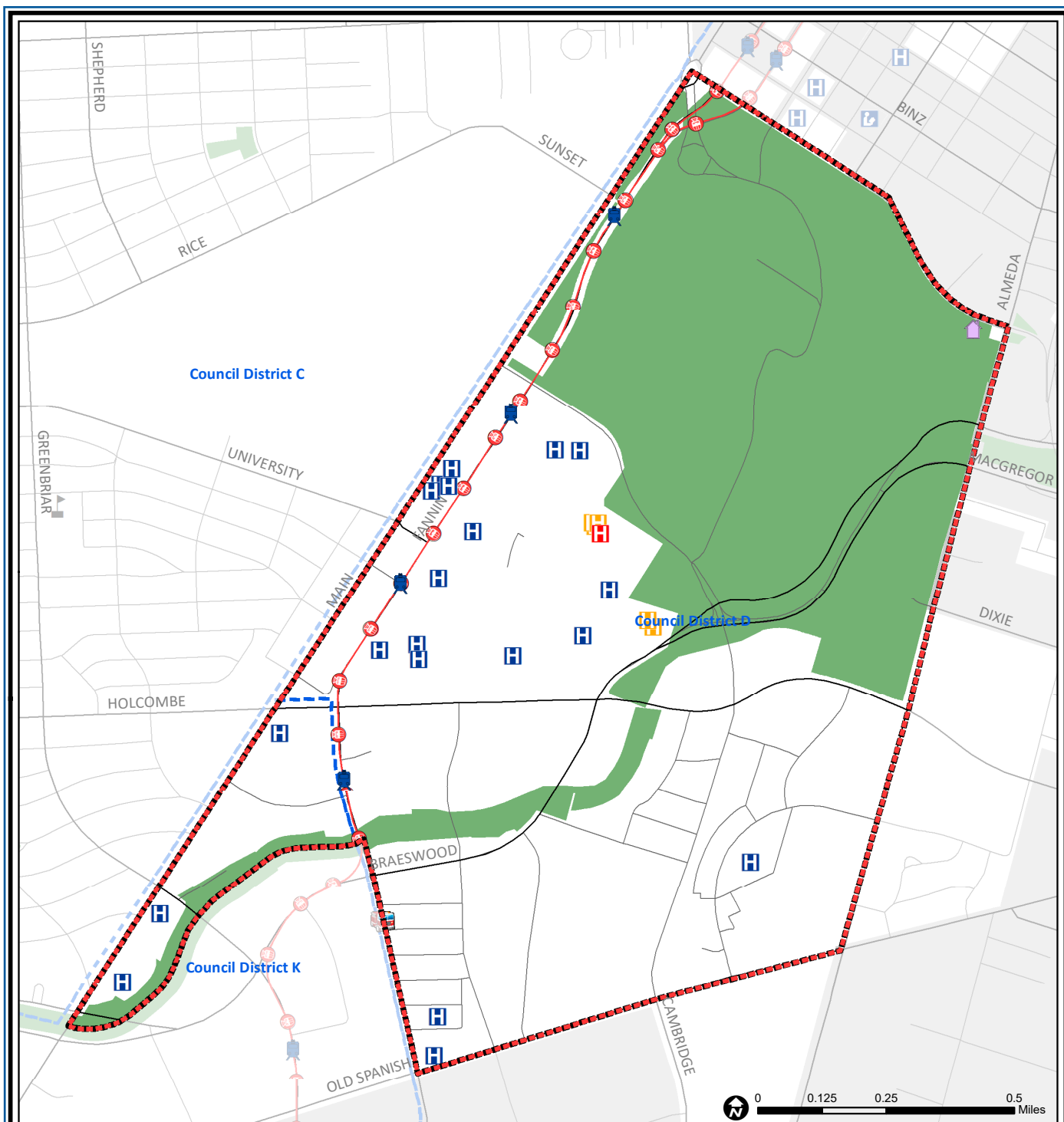
Source: City of Houston GIS Database,
Harris County Appraisal District

Date: June 5, 2019

This map is made available for reference purposes only and should not be substituted for a survey product. The City of Houston will not accept liability of any kind in conjunction with its use.



**PLANNING &
DEVELOPMENT
DEPARTMENT**



Medical Center Area: Public Facilities

- Super Neighborhood Boundary
- Community Centers
- Fire Station
- Police Station
- School

- Airports
- Harris County Hospitals
- Private Hospitals
- Other Health Facilities
- Library

- Rail Road
- Metro Rail Stations
- Metro Rail Line
- Parks
- TIRZ

Source: City of Houston GIS Database

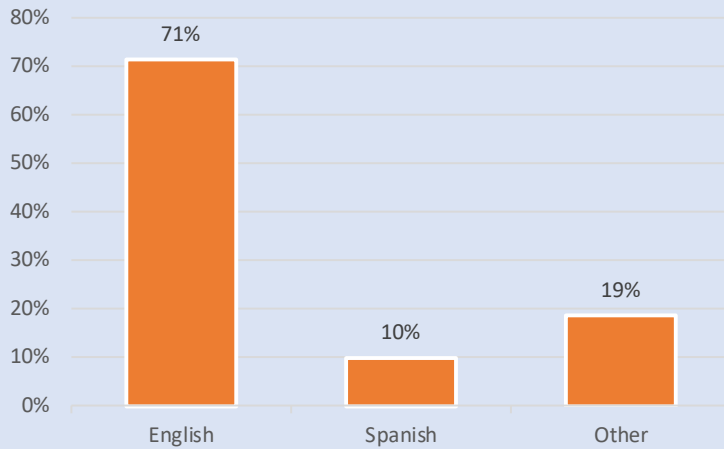
Date: May 2019

This map is made available for reference purposes only and should not be substituted for a survey product. The City of Houston will not accept liability of any kind in conjunction with its use.

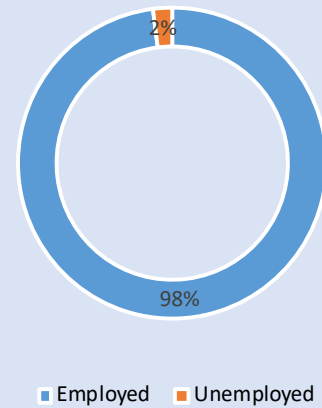


**PLANNING &
DEVELOPMENT
DEPARTMENT**

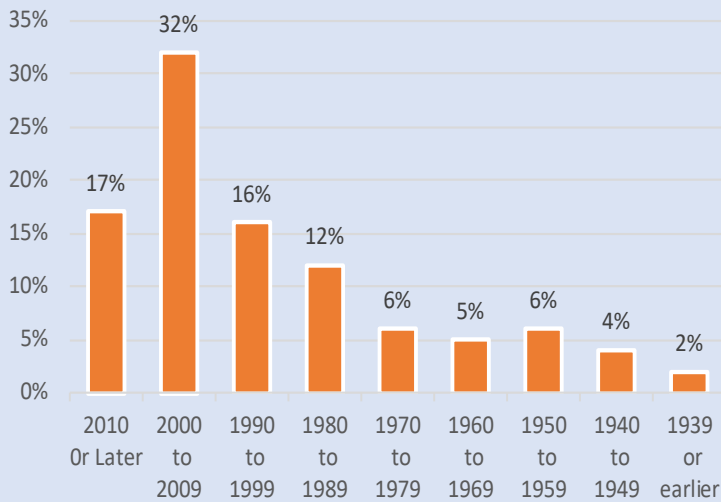
Language Spoken at Home



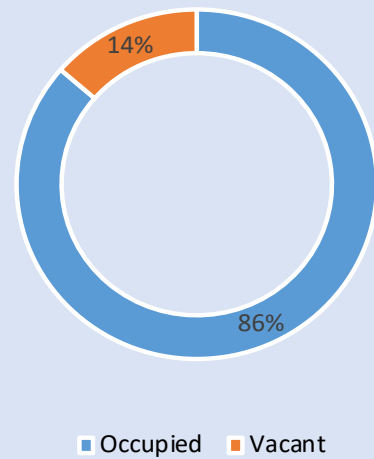
Employment Status



Housing Units by Year Built



Housing Occupancy



Source: U.S. Census Bureau, 2000
American Community Survey, 2013-2017 Estimates



**PLANNING &
DEVELOPMENT
DEPARTMENT**