

# SUPER

## Neighborhood

### RESOURCE ASSESSMENT



	Super Neighborhood		Houston	
Pop. characteristics	2000	2017	2000	2017
Total population	44,957	48,972	1,953,631	2,267,336
Persons per sq. mile	4,182	4,959	3,166	3,394
<b>Age of Population</b>				
Under 5 years	5%	7%	8%	8%
5- 17 years	20%	21%	19%	17%
18- 64 years	59%	56%	64%	65%
65 and over	2%	16%	9%	10%
<b>Ethnicity</b>				
Non Hispanic Whites	78%	63%	31%	25%
Non Hispanic Blacks	2%	8%	25%	22%
Hispanics	9%	13%	37%	44%
Non Hispanic Asians	10%	13%	6%	7%
Non Hispanic Others	2%	3%	1%	2%
<b>Income</b>				
Under \$25,000	32%	11%	33%	26%
\$25,000 to \$49,999	28%	13%	31%	25%
\$50,000 to \$99,999	26%	26%	24%	26%
Over \$100,000	14%	50%	12%	23%
<b>Median Household Income</b>	\$53,582	\$114,954	\$36,616	\$49,399
<b>Educational Status</b>				
No Diploma	11%	6%	30%	22%
High School Diploma	12%	9%	20%	23%
Some College	14%	17%	23%	23%
Bachelor's or Higher	63%	68%	27%	32%
<b>Housing and Households</b>				
Total housing units	19,421	21,383	782,378	943,183
Occupied	95%	89%	92%	89%
Vacant	5%	11%	8%	11%
Total households	18,367	19,050	717,945	838,950
Family households	12,968	12,890	457,549	491,778
Median Housing Value	\$189,176	\$494,522	\$79,300	\$149,000

### Description

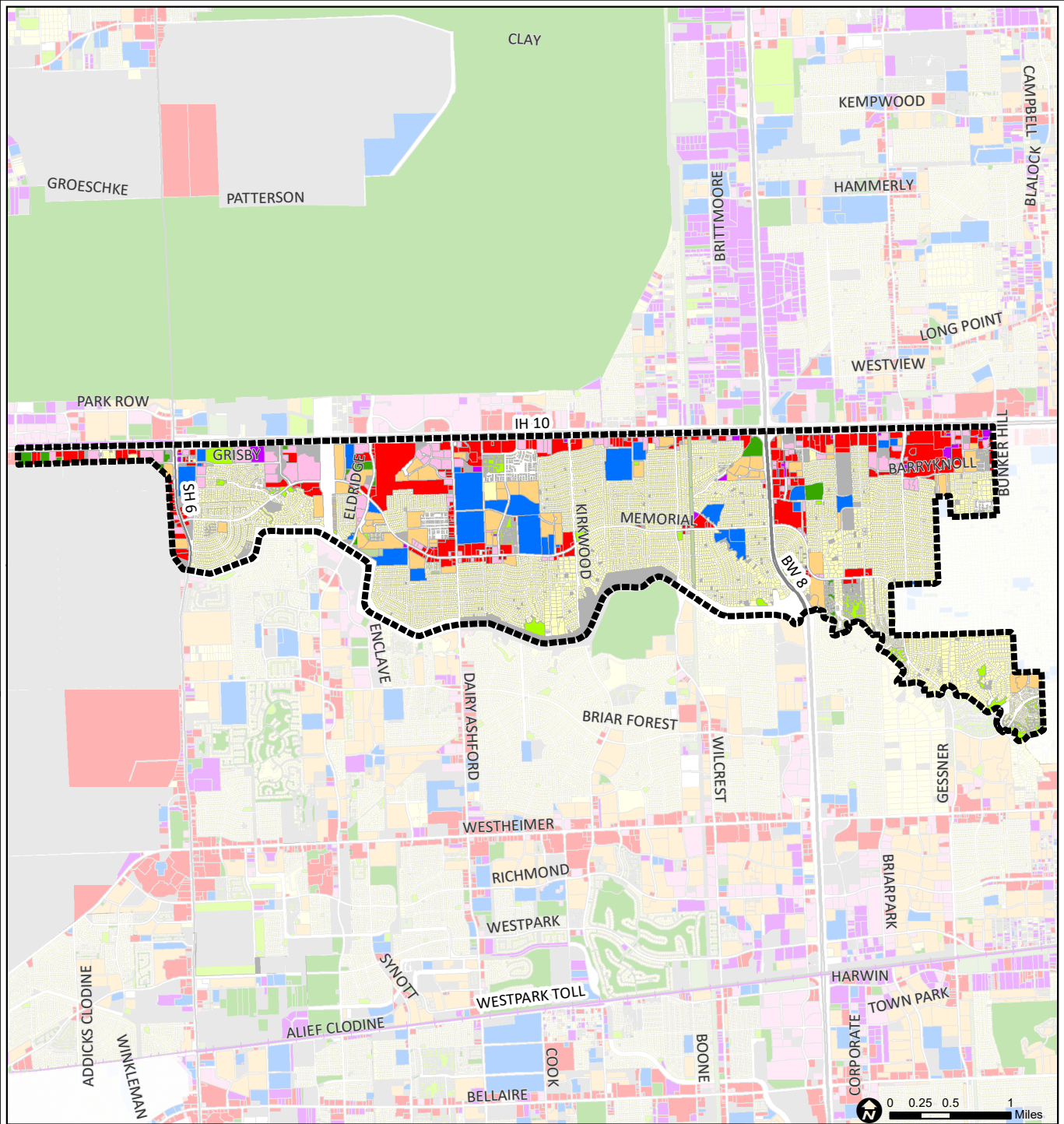
Memorial is one of Houston's most prestigious neighborhoods. Situated between Buffalo Bayou and I-10, west of several incorporated villages, the community takes its name from the main thoroughfare, Memorial Drive. The first significant residential development in this area began in the 1950s. Above-average income homebuyers were attracted to this heavily wooded area and to Spring Branch ISD and Katy ISD schools. Subdivisions range from comfortable mass-produced homes to million dollar estates. Development along I-10 on the northern portion of the area includes important office centers and massive retail districts at Town and Country and Memorial City.

### Highlights

- ✓ Houston City Council District G
- ✓ Houston Independent School District
- ✓ Katy Independent School District
- ✓ Spring Branch Independent School District
- ✓ 6 Police beats (includes bordering beats)
- ✓ 6,878 acres (10.75 sq. miles)



**PLANNING &  
DEVELOPMENT  
DEPARTMENT**



## Memorial: Land Use

Freeway	Commercial	Parks and Open Space
Rail Road	Office	Undeveloped
Super Neighborhood Boundary	Industrial	Agricultural Production
Single-family Residential	Public and Institutional	Open Water
Multi-family Residential	Transportation and Utilities	Unknown

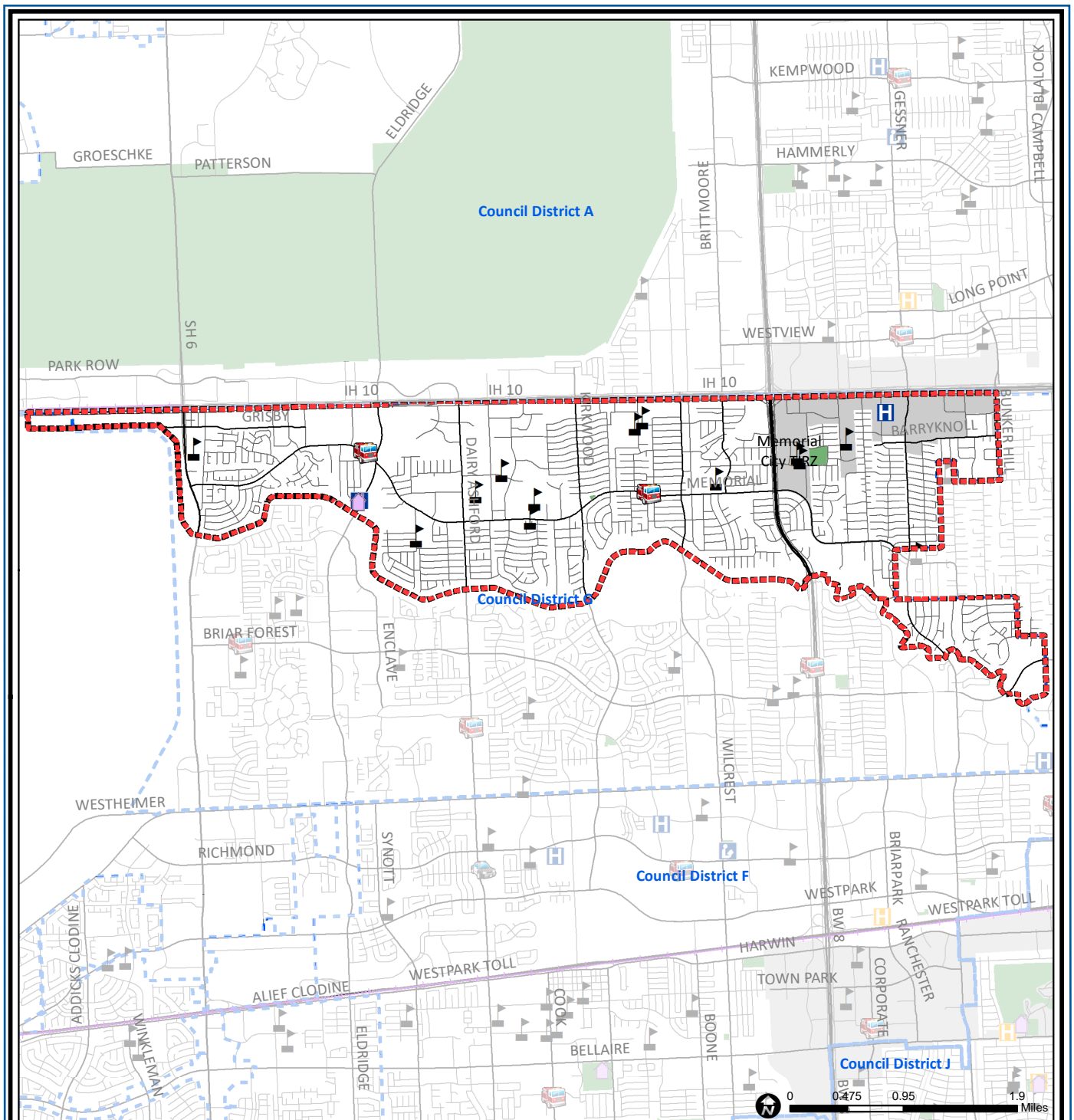
Source: City of Houston GIS Database,  
Harris County Appraisal District

Date: May 24, 2019

This map is made available for reference purposes only and should not be substituted for a survey product. The City of Houston will not accept liability of any kind in conjunction with its use.



**PLANNING &  
DEVELOPMENT  
DEPARTMENT**



## Memorial: Public Facilities

- Super Neighborhood Boundary
- Community Centers
- Fire Station
- Police Station
- School

- Airports
- Harris County Hospitals
- Private Hospitals
- Other Health Facilities
- Library

- Rail Road
- Metro Rail Stations
- Metro Rail Line
- Parks
- TIRZ

Source: City of Houston GIS Database

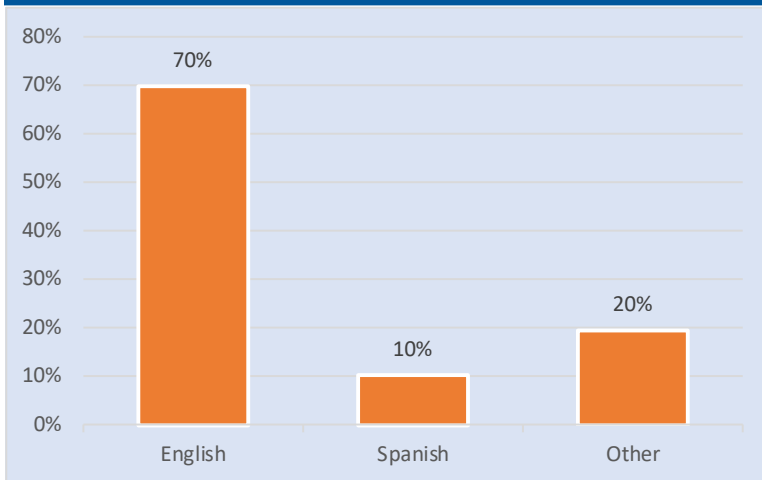
Date: May 2019

This map is made available for reference purposes only and should not be substituted for a survey product. The City of Houston will not accept liability of any kind in conjunction with its use.

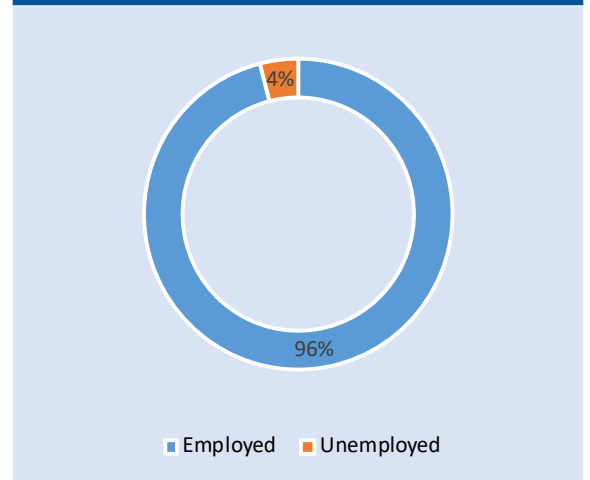


**PLANNING &  
DEVELOPMENT  
DEPARTMENT**

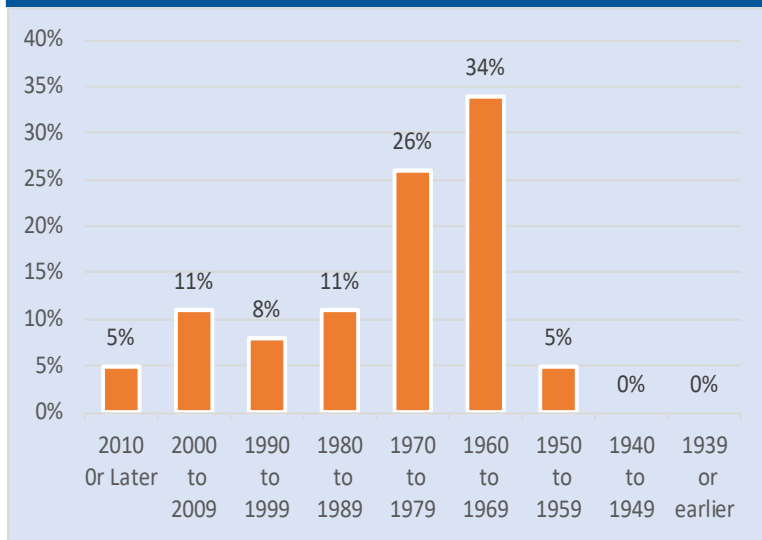
### Language Spoken at Home



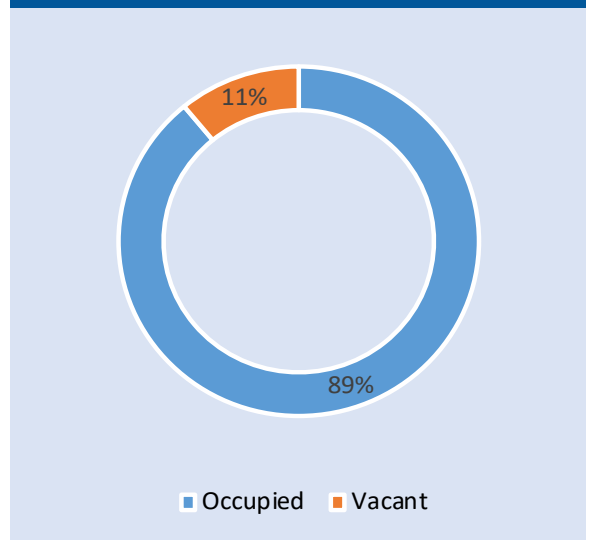
### Employment Status



### Housing Units by Year Built



### Housing Occupancy



Source: U.S. Census Bureau, 2000  
American Community Survey, 2013-2017 Estimates



**PLANNING &  
DEVELOPMENT  
DEPARTMENT**