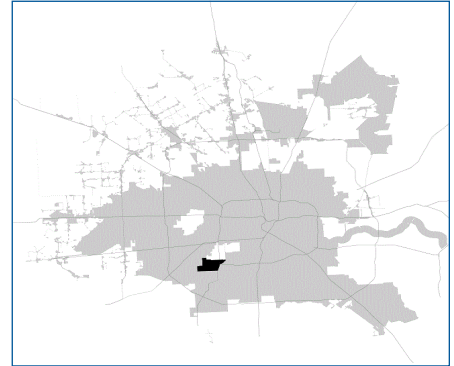


# SUPER

## Neighborhood

### RESOURCE ASSESSMENT



	Super Neighborhood		Houston	
Pop. characteristics	2000	2017	2000	2017
Total population	19,841	20,836	1,953,631	2,267,336
Persons per sq. mile	4,851	5,073	3,166	3,394
<b>Age of Population</b>				
Under 5 years	6%	7%	8%	8%
5- 17 years	17%	16%	19%	17%
18- 64 years	58%	61%	64%	65%
65 and over	19%	16%	9%	10%
<b>Ethnicity</b>				
Non Hispanic Whites	77%	55%	31%	25%
Non Hispanic Blacks	4%	13%	25%	22%
Hispanics	9%	17%	37%	44%
Non Hispanic Asians	8%	13%	6%	7%
Non Hispanic Others	2%	2%	1%	2%
<b>Income</b>				
Under \$25,000	18%	17%	33%	26%
\$25,000 to \$49,999	24%	16%	31%	25%
\$50,000 to \$99,999	28%	23%	24%	26%
Over \$100,000	30%	44%	12%	23%
<b>Median Household Income</b>	\$65,413	\$90,626	\$36,616	\$49,399
<b>Educational Status</b>				
No Diploma	6%	5%	30%	22%
High School Diploma	12%	14%	20%	23%
Some College	22%	21%	23%	23%
Bachelor's or Higher	60%	60%	27%	32%
<b>Housing and Households</b>				
Total housing units	8,869	9,785	782,378	943,183
Occupied	96%	88%	92%	89%
Vacant	4%	12%	8%	11%
Total households	8,548	8,594	717,945	838,950
Family households	5,733	5,426	457,549	491,778
Median Housing Value	\$148,227	\$350,966	\$79,300	\$149,000

### Description

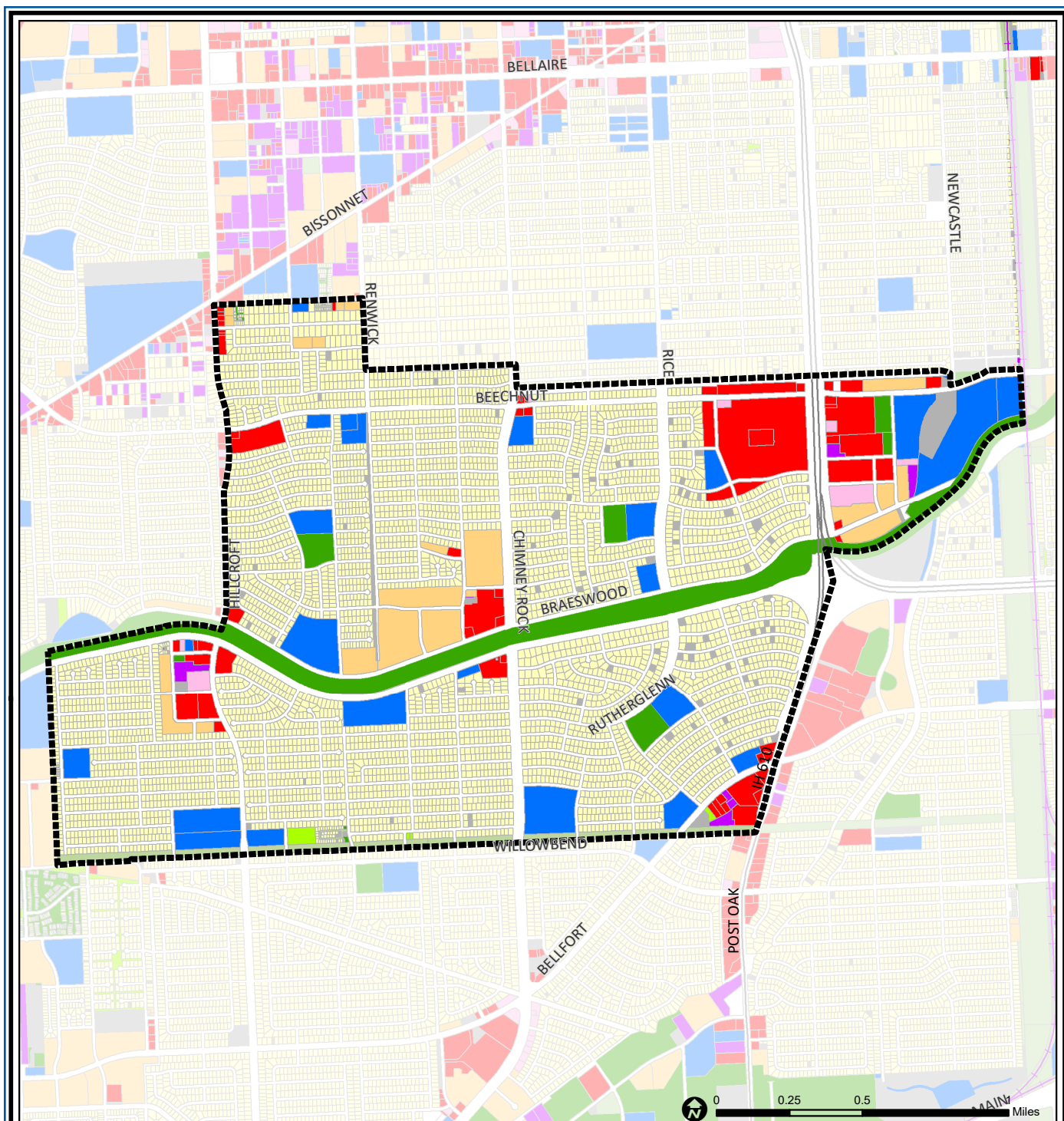
Meyerland Area is found on both sides of Brays Bayou at the southwest corner of Loop 610. Its many neighborhoods include Meyerland, Marilyn Estates, Barkley Square and Maplewood. Many institutions of Houston's Jewish community are found here, including several temples and the Jewish Community Center. The northeast corner of the community includes the recently developed Meyerland Center retail development. The area was developed beginning in the 1950s.

### Highlights

- ✓ Houston City Council Districts C & K
- ✓ Houston Independent School District
- ✓ 6 Police beats (includes bordering beats)
- ✓ 2,615 acres (4.09 sq. miles)



**PLANNING &  
DEVELOPMENT  
DEPARTMENT**



## Meyerland Area: Land Use

Freeway	Commercial	Parks and Open Space
Rail Road	Office	Undeveloped
Super Neighborhood Boundary	Industrial	Agricultural Production
Single-family Residential	Public and Institutional	Open Water
Multi-family Residential	Transportation and Utilities	Unknown

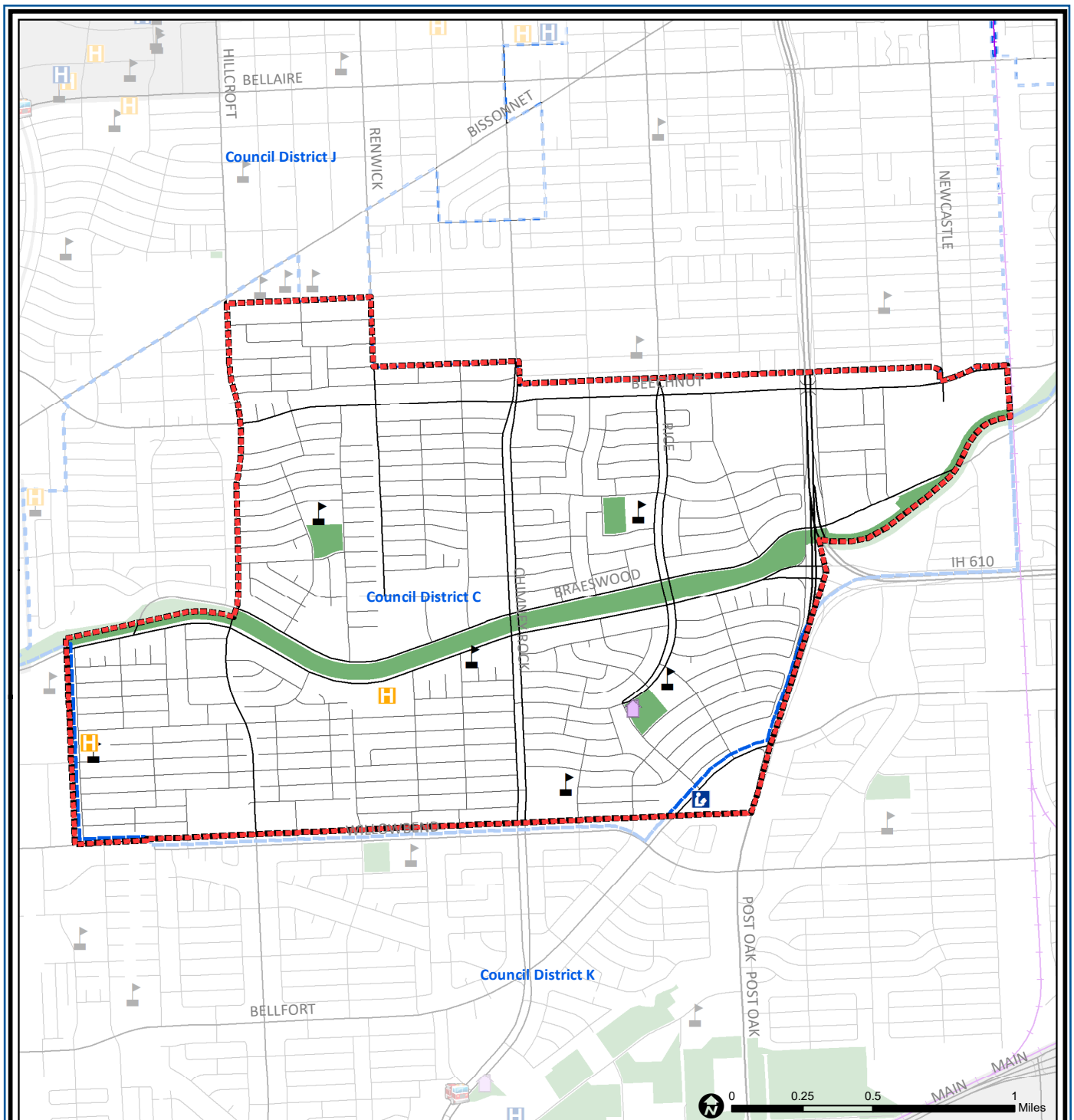
Source: City of Houston GIS Database,  
Harris County Appraisal District

Date: May 24, 2019

This map is made available for reference purposes only and should not be substituted for a survey product. The City of Houston will not accept liability of any kind in conjunction with its use.



**PLANNING &  
DEVELOPMENT  
DEPARTMENT**



## Meyerland Area: Public Facilities

Super Neighborhood Boundary

Community Centers

Fire Station

Police Station

School

Airports

Harris County Hospitals

Private Hospitals

Other Health Facilities

Library

Rail Road

Metro Rail Stations

Metro Rail Line

Parks

TIRZ

Source: City of Houston GIS Database

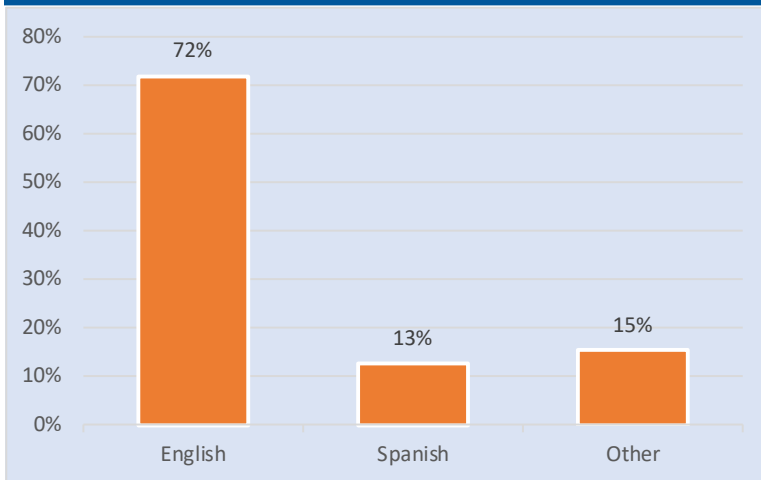
Date: May 2019

This map is made available for reference purposes only and should not be substituted for a survey product. The City of Houston will not accept liability of any kind in conjunction with its use.

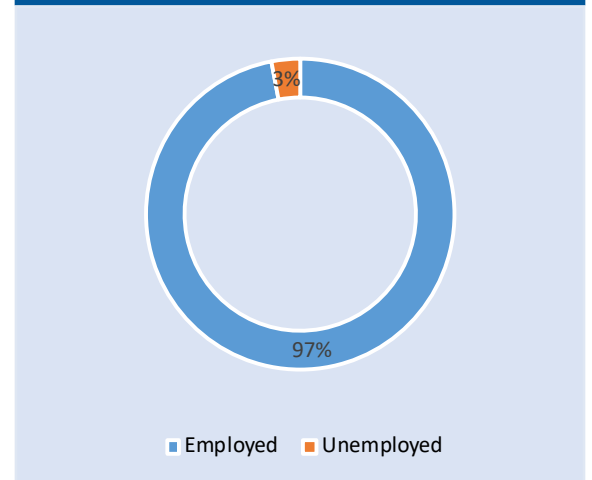


**PLANNING &  
DEVELOPMENT  
DEPARTMENT**

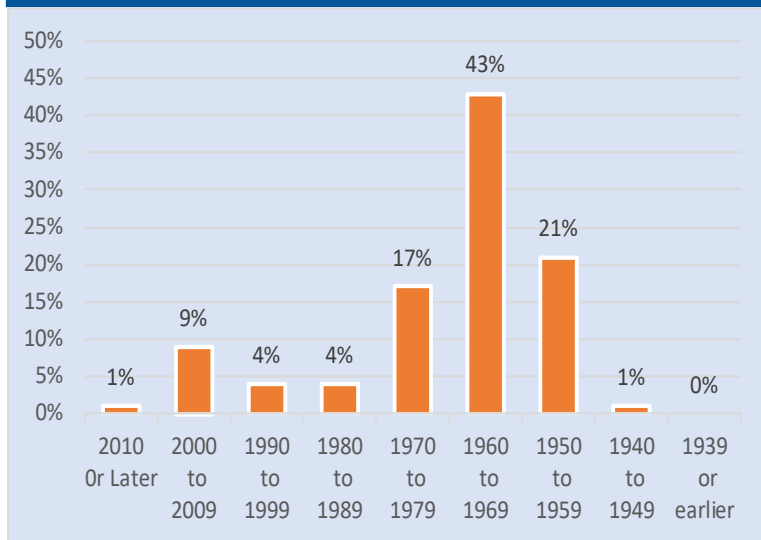
### Language Spoken at Home



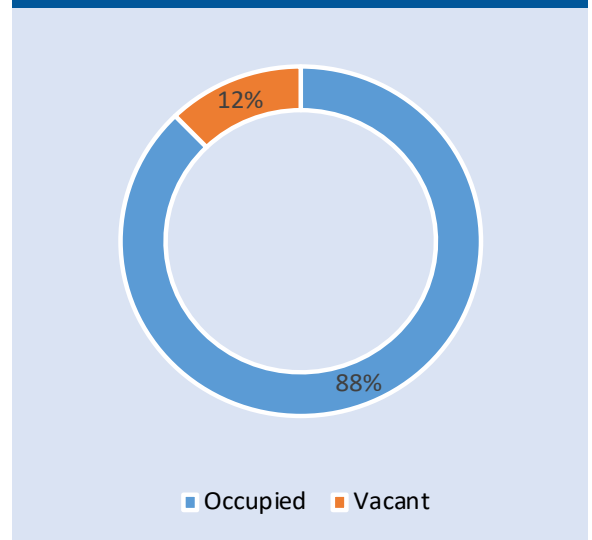
### Employment Status



### Housing Units by Year Built



### Housing Occupancy



Source: U.S. Census Bureau, 2000  
American Community Survey, 2013-2017 Estimates



**PLANNING &  
DEVELOPMENT  
DEPARTMENT**