

SUPER

Neighborhood

RESOURCE ASSESSMENT



	Super Neighborhood		Houston	
Pop. characteristics	2000	2017	2000	2017
Total population	28,015	31,744	1,953,631	2,267,336
Persons per sq. mile	8,567	9,707	3,166	3,394
Age of Population				
Under 5 years	3%	3%	8%	8%
5- 17 years	7%	5%	19%	17%
18- 64 years	84%	82%	64%	65%
65 and over	5%	10%	9%	10%
Ethnicity				
Non Hispanic Whites	68%	72%	31%	25%
Non Hispanic Blacks	4%	4%	25%	22%
Hispanics	23%	13%	37%	44%
Non Hispanic Asians	4%	8%	6%	7%
Non Hispanic Others	2%	3%	1%	2%
Income				
Under \$25,000	28%	13%	33%	26%
\$25,000 to \$49,999	30%	16%	31%	25%
\$50,000 to \$99,999	25%	26%	24%	26%
Over \$100,000	18%	45%	12%	23%
Median Household Income	\$44,242	\$94,095	\$36,616	\$49,399
Educational Status				
No Diploma	13%	3%	30%	22%
High School Diploma	11%	7%	20%	23%
Some College	23%	18%	23%	23%
Bachelor's or Higher	52%	72%	27%	32%
Housing and Households				
Total housing units	18,524	19,740	782,378	943,183
Occupied	88%	90%	92%	89%
Vacant	12%	10%	8%	11%
Total households	16,239	17,703	717,945	838,950
Family households	4,222	5,705	457,549	491,778
Median Housing Value	\$208,975	\$421,728	\$79,300	\$149,000

Description

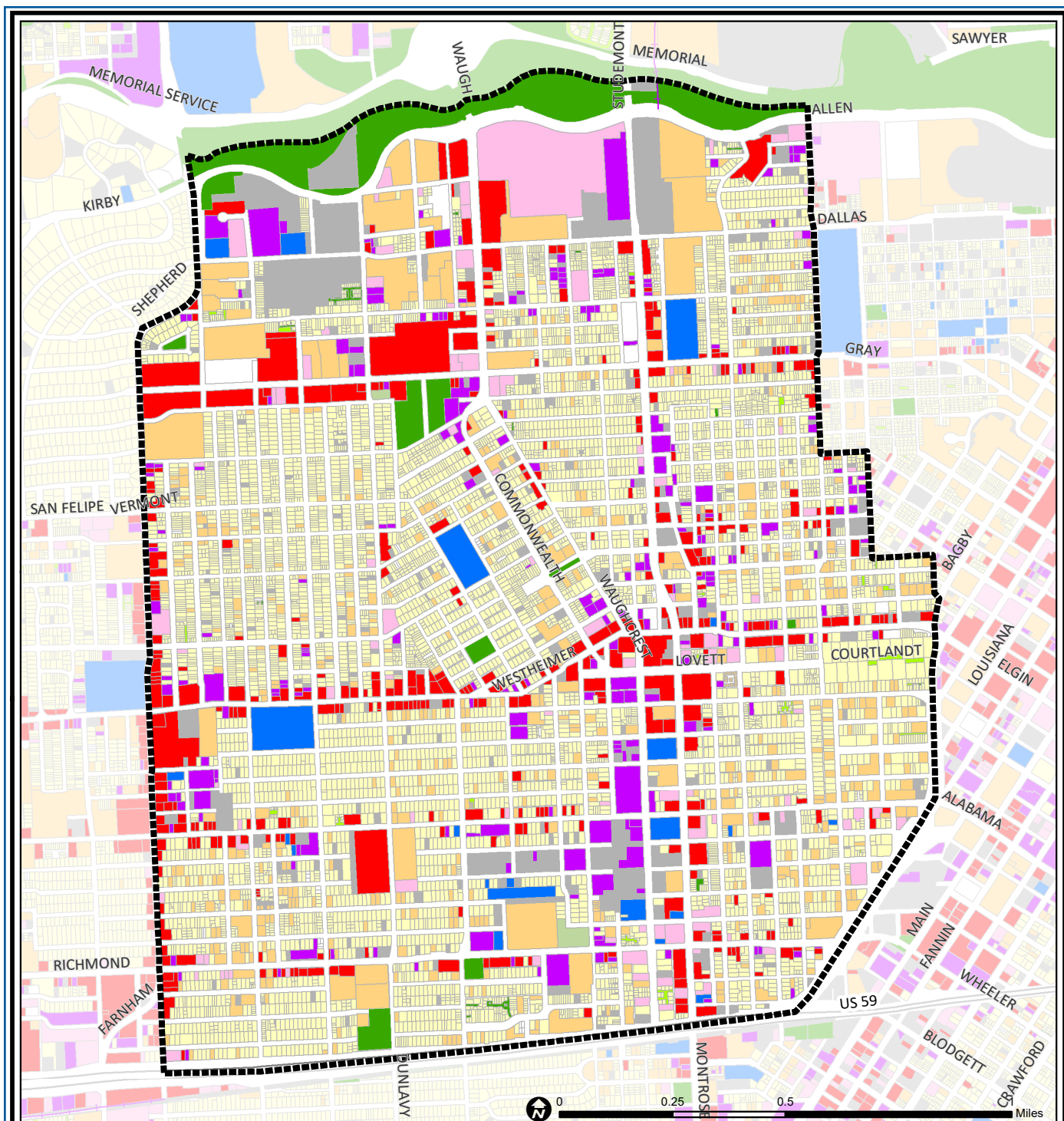
Neartown / Montrose is an eclectic neighborhood where cottage housing exists side by side with burgeoning townhome developments, large luxury apartment complexes and older duplexes. Many of Houston's historic mansions are found in the Avondale and Courtlandt Place areas. Restaurants, bars and unique retail shops can be found throughout this area.

Highlights

- ✓ Houston City Council District C
- ✓ Houston Independent School District
- ✓ 4 Police beats (includes bordering beats)
- ✓ 2,093 acres (3.27 sq. miles)



**PLANNING &
DEVELOPMENT
DEPARTMENT**



Neartown / Montrose: Land Use

Freeway	Commercial	Parks and Open Space
Rail Road	Office	Undeveloped
Super Neighborhood Boundary	Industrial	Agricultural Production
Single-family Residential	Public and Institutional	Open Water
Multi-family Residential	Transportation and Utilities	Unknown

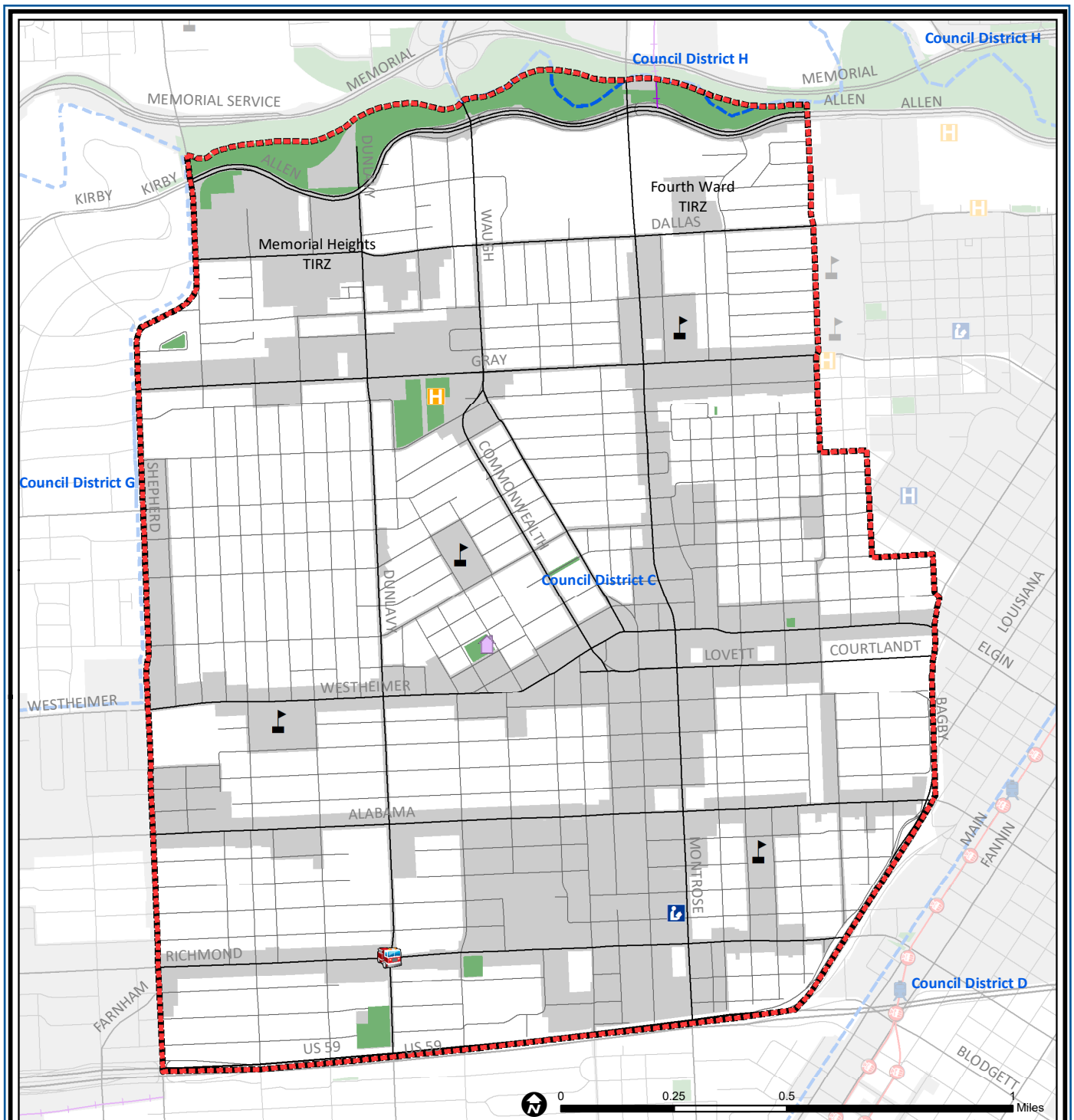
Source: City of Houston GIS Database,
Harris County Appraisal District

Date: May 24, 2019

This map is made available for reference purposes only and should not be substituted for a survey product. The City of Houston will not accept liability of any kind in conjunction with its use.



**PLANNING &
DEVELOPMENT
DEPARTMENT**



Neartown / Montrose: Public Facilities

	Super Neighborhood Boundary		Airports		Rail Road
	Community Centers		Harris County Hospitals		Metro Rail Stations
	Fire Station		Private Hospitals		Metro Rail Line
	Police Station		Other Health Facilities		Parks
	School		Library		TIRZ

Source: City of Houston GIS Database

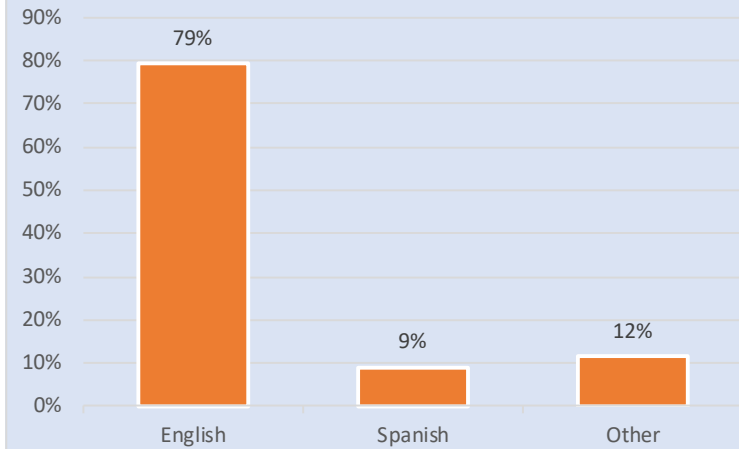
Date: June 2019

This map is made available for reference purposes only and should not be substituted for a survey product. The City of Houston will not accept liability of any kind in conjunction with its use.

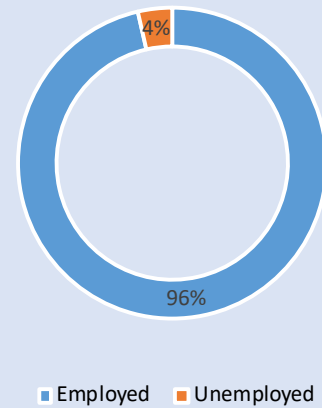


**PLANNING &
DEVELOPMENT
DEPARTMENT**

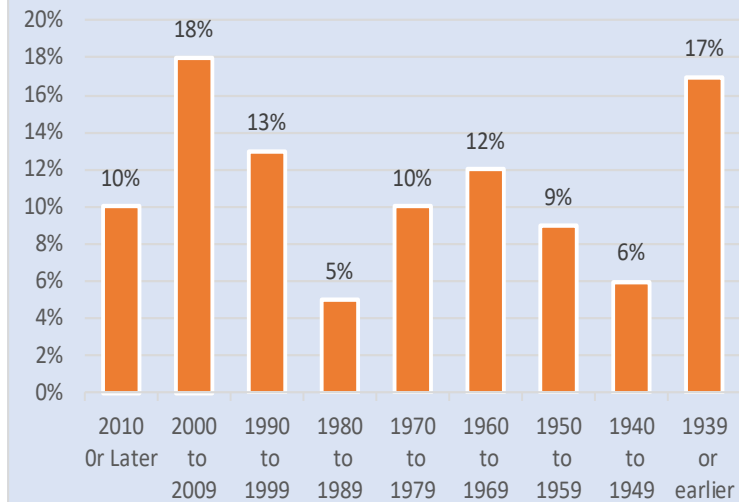
Language Spoken at Home



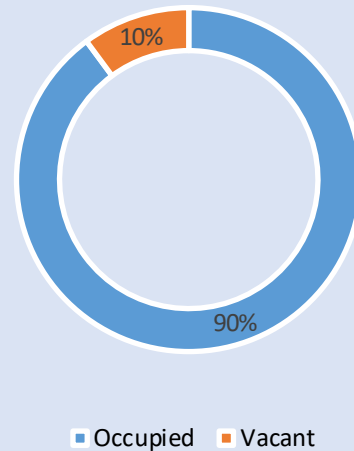
Employment Status



Housing Units by Year Built



Housing Occupancy



Source: U.S. Census Bureau, 2000
American Community Survey, 2013-2017 Estimates



**PLANNING &
DEVELOPMENT
DEPARTMENT**