

# SUPER

## Neighborhood

### RESOURCE ASSESSMENT



	Super Neighborhood		Houston	
Pop. characteristics	2000	2017	2000	2017
Total population	9,902	8,397	1,953,631	2,267,336
Persons per sq. mile	5,691	4,535	3,166	3,394
<b>Age of Population</b>				
Under 5 years	11%	9%	8%	8%
5- 17 years	23%	18%	19%	17%
18- 64 years	61%	64%	64%	65%
65 and over	5%	9%	9%	10%
<b>Ethnicity</b>				
Non Hispanic Whites	11%	5%	31%	25%
Non Hispanic Blacks	3%	2%	25%	22%
Hispanics	74%	87%	37%	44%
Non Hispanic Asians	11%	4%	6%	7%
Non Hispanic Others	1%	2%	1%	2%
<b>Income</b>				
Under \$25,000	41%	27%	33%	26%
\$25,000 to \$49,999	38%	34%	31%	25%
\$50,000 to \$99,999	17%	27%	24%	26%
Over \$100,000	3%	12%	12%	23%
<b>Median Household Income</b>	\$28,956	\$41,495	\$36,616	\$49,399
<b>Educational Status</b>				
No Diploma	56%	39%	30%	22%
High School Diploma	21%	31%	20%	23%
Some College	16%	24%	23%	23%
Bachelor's or Higher	7%	6%	27%	32%
<b>Housing and Households</b>				
Total housing units	3,212	3,210	782,378	943,183
Occupied	92%	81%	92%	89%
Vacant	8%	19%	8%	11%
Total households	2,958	2,592	717,945	838,950
Family households	2,218	1,801	457,549	491,778
Median Housing Value	\$50,796	\$94,947	\$79,300	\$149,000

### Description

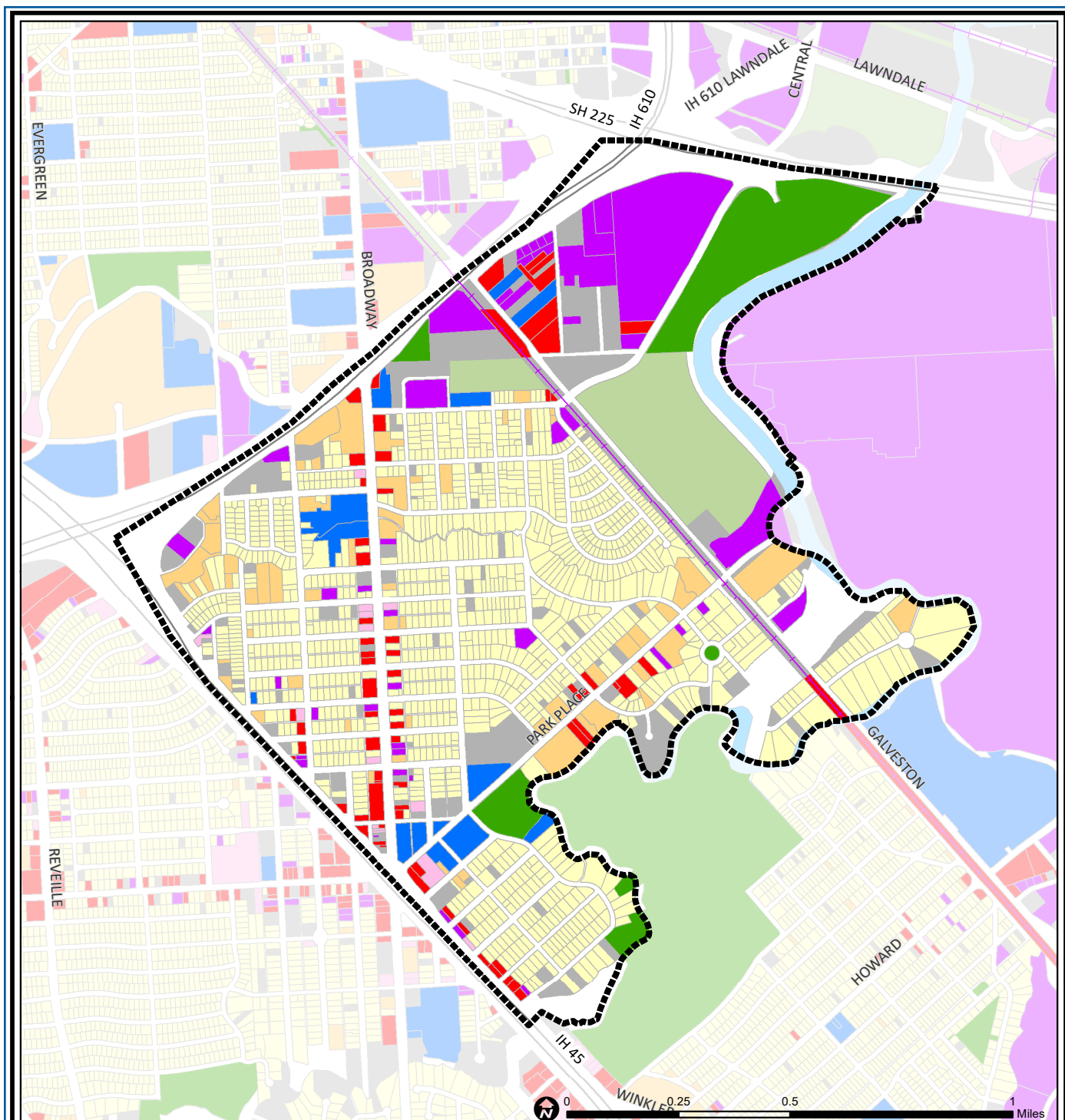
Park Place was an independent municipality before 1927 when it voluntarily consolidated with the City of Houston. At that time, Broadway and Park Place Boulevards were lined with large homes. Most of these were replaced with apartments and small businesses after deed restrictions in the area lapsed. (Some areas in the wooded setting adjacent to Sims Bayou are still deed restricted.) Many side streets in the community are lined with large pecan trees, some of which date from the 1920s. Industrial development occupies the northeastern corner of the community, which is close to the Houston Ship Channel. In recent years, several aging apartment complexes have been converted into condominiums.

### Highlights

- ✓ Houston City Council District I
- ✓ Houston Independent School District
- ✓ 4 Police beats (includes bordering beats)
- ✓ 1,112 acres (1.74 sq. miles)



**PLANNING &  
DEVELOPMENT  
DEPARTMENT**



## Park Place: Land Use

Freeway	Commercial	Parks and Open Space
Rail Road	Office	Undeveloped
Super Neighborhood Boundary	Industrial	Agricultural Production
Single-family Residential	Public and Institutional	Open Water
Multi-family Residential	Transportation and Utilities	Unknown

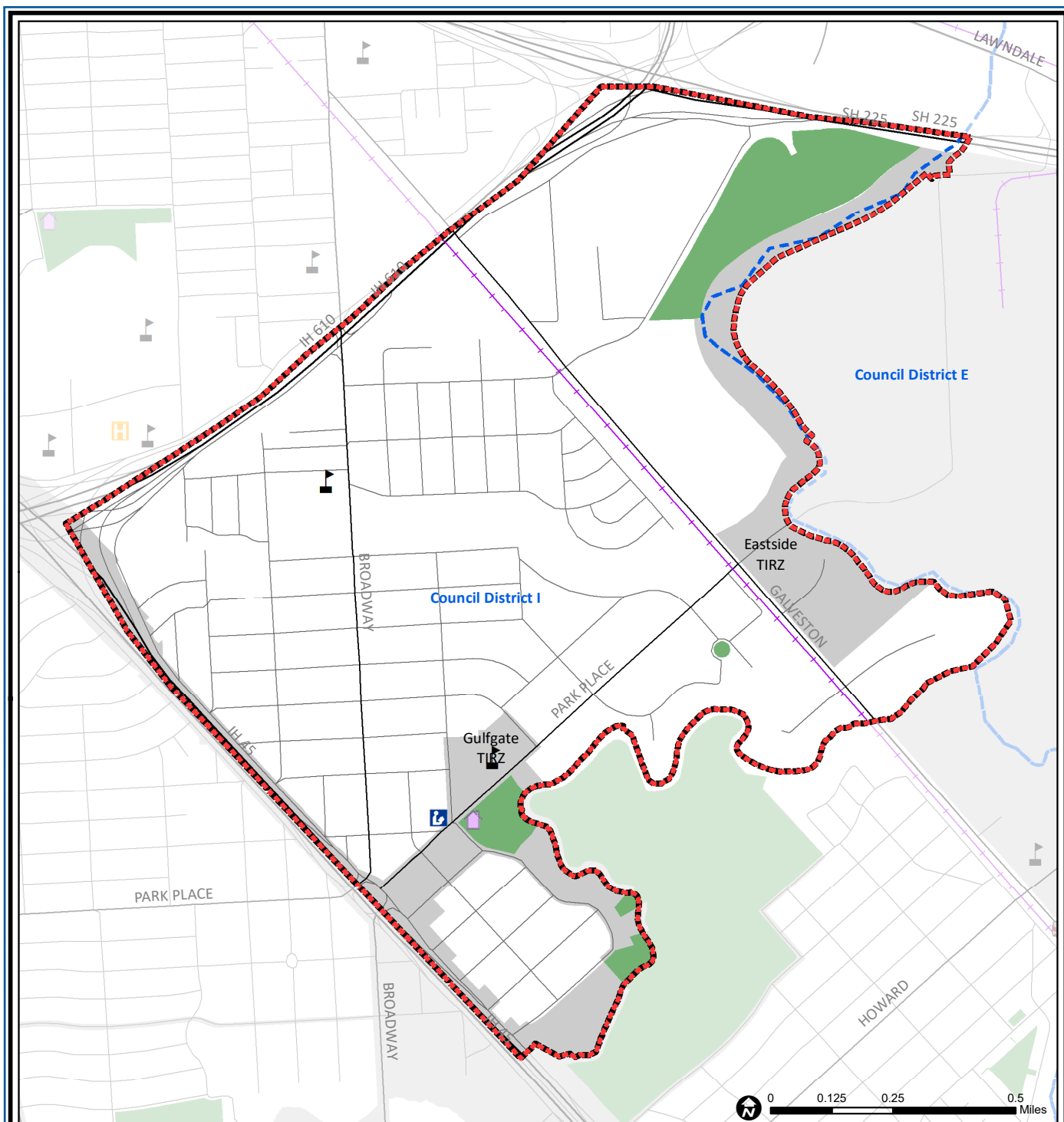
Source: City of Houston GIS Database,  
Harris County Appraisal District

Date: May 24, 2019

This map is made available for reference purposes only and should not be substituted for a survey product. The City of Houston will not accept liability of any kind in conjunction with its use.



**PLANNING &  
DEVELOPMENT  
DEPARTMENT**



## Park Place: Public Facilities

- Super Neighborhood Boundary
- Community Centers
- Fire Station
- Police Station
- School

- Airports
- Harris County Hospitals
- Private Hospitals
- Other Health Facilities
- Library

- Rail Road
- Metro Rail Stations
- Metro Rail Line
- Parks
- TIRZ

Source: City of Houston GIS Database

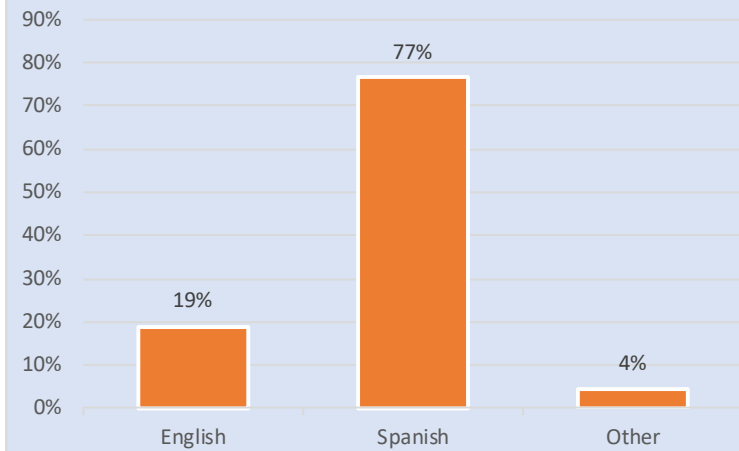
Date: May 2019

This map is made available for reference purposes only and should not be substituted for a survey product. The City of Houston will not accept liability of any kind in conjunction with its use.

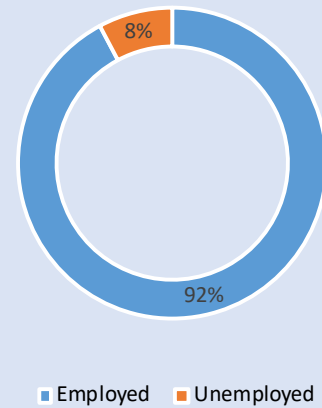


**PLANNING & DEVELOPMENT DEPARTMENT**

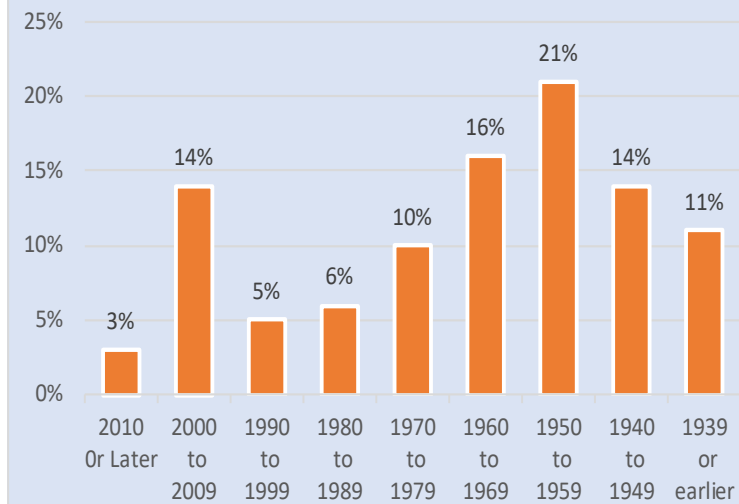
### Language Spoken at Home



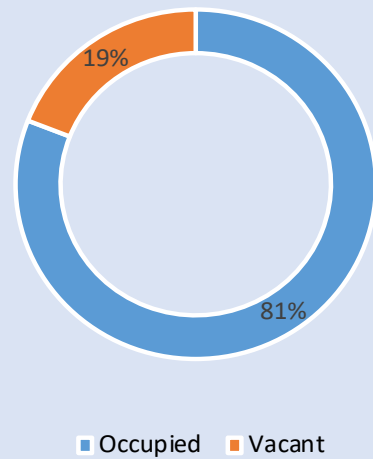
### Employment Status



### Housing Units by Year Built



### Housing Occupancy



Source: U.S. Census Bureau, 2000  
American Community Survey, 2013-2017 Estimates



**PLANNING &  
DEVELOPMENT  
DEPARTMENT**