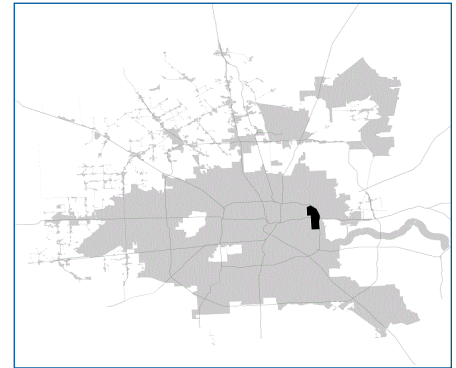


SUPER

Neighborhood

RESOURCE ASSESSMENT



	Super Neighborhood		Houston	
Pop. characteristics	2000	2017	2000	2017
Total population	3,564	3,221	1,953,631	2,237,336
Persons per sq. mile	1,007	909	3,166	3,394
Age of Population				
Under 5 years	5%	6%	8%	8%
5- 17 years	16%	25%	19%	17%
18- 64 years	50%	53%	64%	65%
65 and over	29%	16%	9%	10%
Ethnicity				
Non Hispanic Whites	2%	2%	31%	25%
Non Hispanic Blacks	86%	45%	25%	22%
Hispanics	11%	52%	37%	44%
Non Hispanic Asians	0%	0%	6%	7%
Non Hispanic Others	1%	1%	1%	2%
Income				
Under \$25,000	49%	40%	33%	26%
\$25,000 to \$49,999	27%	29%	31%	25%
\$50,000 to \$99,999	21%	27%	24%	26%
Over \$100,000	3%	4%	12%	23%
Median Household Income	\$27,138	\$35,006	\$36,616	\$49,399
Educational Status				
No Diploma	36%	34%	30%	22%
High School Diploma	25%	25%	20%	23%
Some College	28%	28%	23%	23%
Bachelor's or Higher	10%	13%	27%	32%
Housing and Households				
Total housing units	1,470	1,306	782,378	943,183
Occupied	95%	82%	92%	89%
Vacant	5%	18%	8%	11%
Total households	1,393	1,085	717,945	838,950
Family households	955	669	457,549	491,778
Median Housing Value	\$49,117	\$64,695	\$79,300	\$149,000

Description

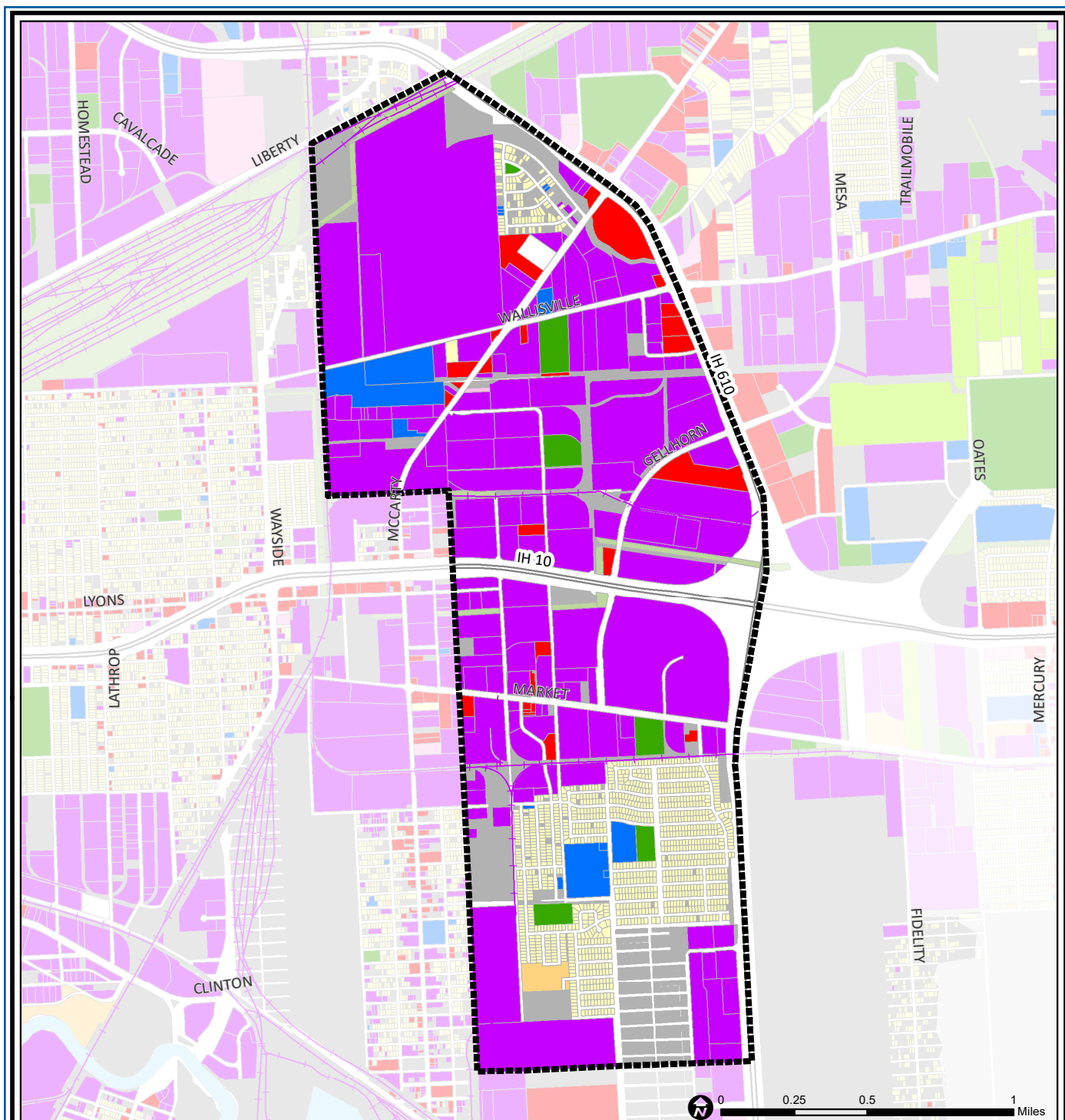
Pleasantville Area includes many industrial areas, as well as two distinct residential areas. Groveland Terrace is a small residential area in the north and south of Interstate 10 (East Frwy) is the Pleasantville subdivision. Pleasantville was developed after World War II and is predominantly African-American. The high homeownership rate and strong neighborhood identity has staved off deterioration even as the residential area has been surrounded by warehouses and industries.

Highlights

- ✓ Houston City Council Districts B, H & I
- ✓ Houston Independent School District
- ✓ North Forest Independent School District
- ✓ 4 Police beats (includes bordering beats)
- ✓ 2,267 acres (3.54 sq. miles)



**PLANNING &
DEVELOPMENT
DEPARTMENT**



Pleasantville Area: Land Use

	Freeway		Commercial		Parks and Open Space
	Rail Road		Office		Undeveloped
	Super Neighborhood Boundary		Industrial		Agricultural Production
	Single-family Residential		Public and Institutional		Open Water
	Multi-family Residential		Transportation and Utilities		Unknown

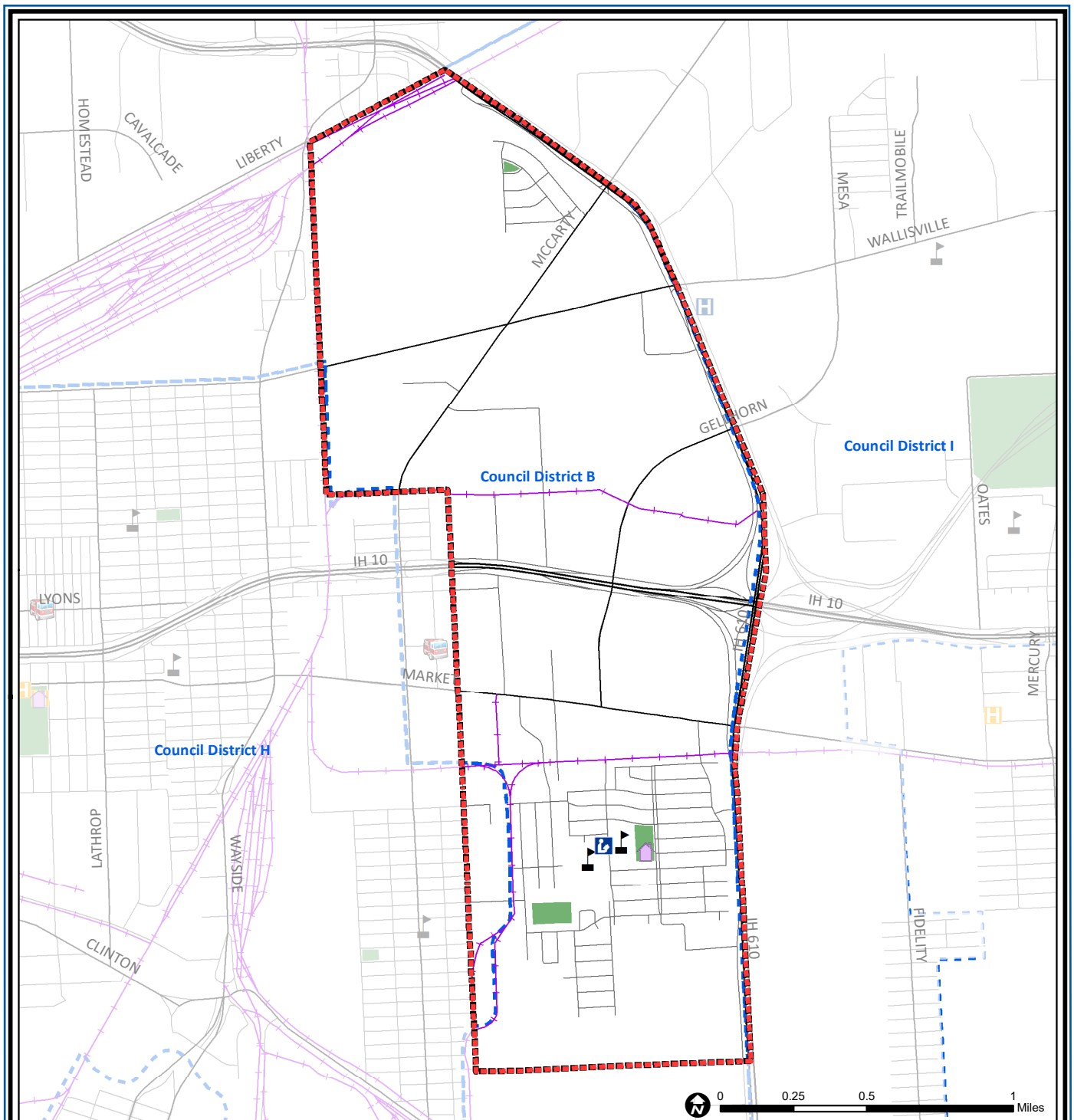
Source: City of Houston GIS Database,
Harris County Appraisal District

Date: May 24, 2019

This map is made available for reference purposes only and should not be substituted for a survey product. The City of Houston will not accept liability of any kind in conjunction with its use.



**PLANNING &
DEVELOPMENT
DEPARTMENT**



Pleasantville Area: Public Facilities

- Super Neighborhood Boundary
- Community Centers
- Fire Station
- Police Station
- School

- Airports
- Harris County Hospitals
- Private Hospitals
- Other Health Facilities
- Library

- Rail Road
- Metro Rail Stations
- Metro Rail Line
- Parks
- TIRZ

Source: City of Houston GIS Database

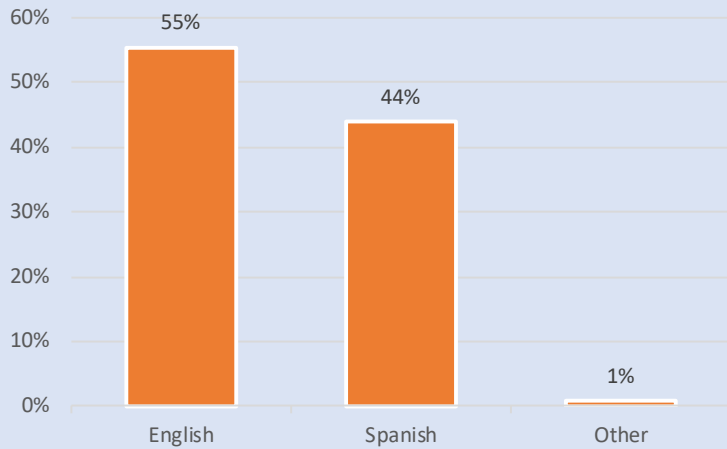
Date: May 2019

This map is made available for reference purposes only and should not be substituted for a survey product. The City of Houston will not accept liability of any kind in conjunction with its use.

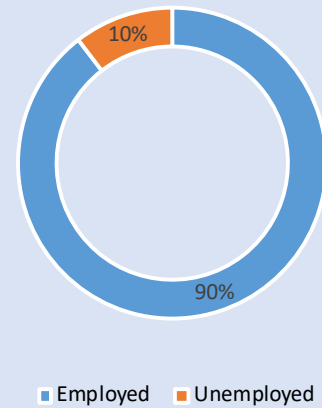


**PLANNING &
DEVELOPMENT
DEPARTMENT**

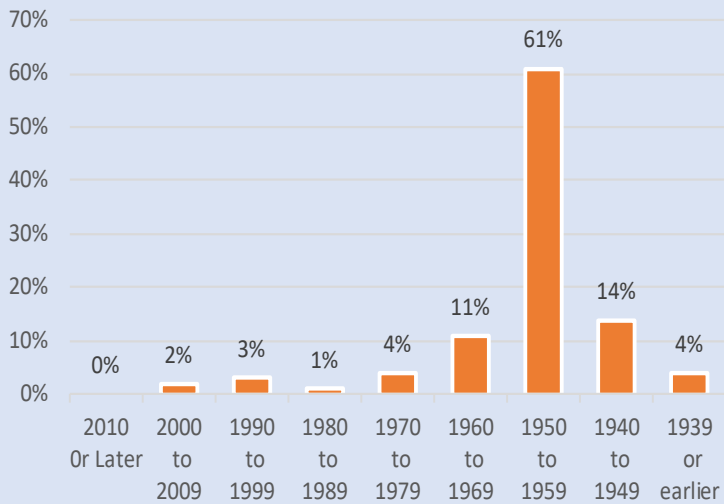
Language Spoken at Home



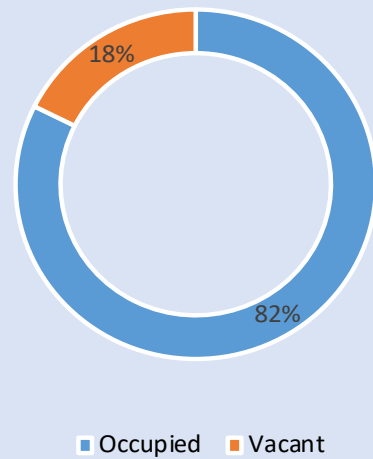
Employment Status



Housing Units by Year Built



Housing Occupancy



Source: U.S. Census Bureau, 2000
American Community Survey, 2013-2017 Estimates



**PLANNING &
DEVELOPMENT
DEPARTMENT**