

SUPER

Neighborhood

RESOURCE ASSESSMENT



	Super Neighborhood		Houston	
Pop. characteristics	2000	2017	2000	2017
Total population	18,224	20,528	1,953,631	2,267,336
Persons per sq. mile	2,670	3,039	3,166	3,394
Age of Population				
Under 5 years	7%	6%	8%	8%
5- 17 years	24%	21%	19%	17%
18- 64 years	57%	59%	64%	65%
65 and over	12%	14%	9%	10%
Ethnicity				
Non Hispanic Whites	1%	2%	31%	25%
Non Hispanic Blacks	95%	83%	25%	22%
Hispanics	3%	13%	37%	44%
Non Hispanic Asians	0%	1%	6%	7%
Non Hispanic Others	1%	1%	1%	2%
Income				
Under \$25,000	43%	30%	33%	26%
\$25,000 to \$49,999	33%	27%	31%	25%
\$50,000 to \$99,999	19%	31%	24%	26%
Over \$100,000	5%	12%	12%	23%
Median Household Income	\$30,168	\$31,560	\$36,616	\$49,399
Educational Status				
No Diploma	28%	15%	30%	22%
High School Diploma	33%	34%	20%	23%
Some College	28%	31%	23%	23%
Bachelor's or Higher	11%	20%	27%	32%
Housing and Households				
Total housing units	6,659	8,172	782,378	943,183
Occupied	92%	84%	92%	89%
Vacant	8%	16%	8%	11%
Total households	6,112	6,848	717,945	838,950
Family households	4,723	4,979	457,549	491,778
Median Housing Value	\$50,929	\$77,322	\$79,300	\$149,000

Description

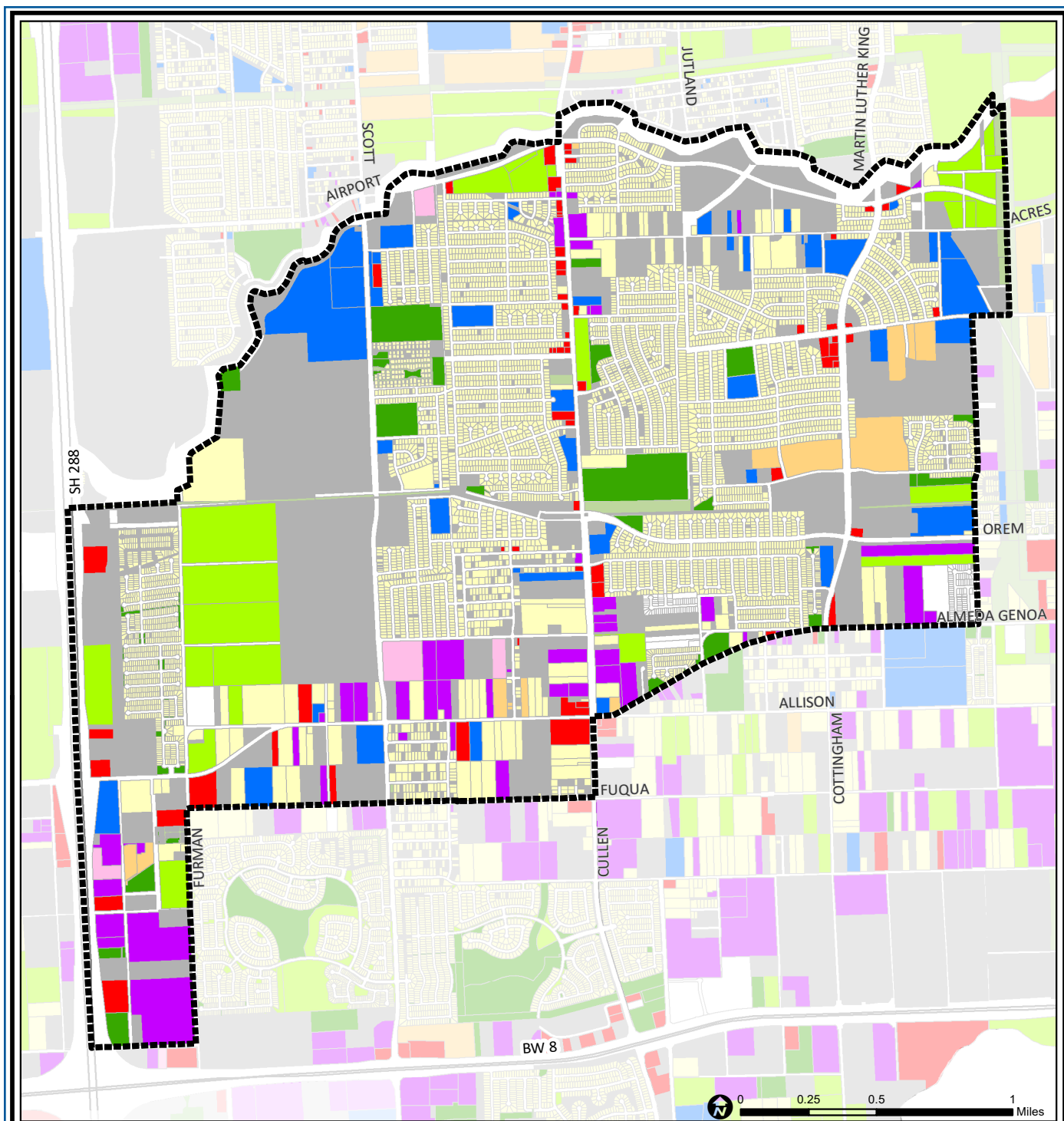
South Acres / Crestmont Park is a suburban area of south central Houston across Sims Bayou from Sunnyside. Most of the housing in the community is post-war single family in typical suburban street patterns, although there are some large apartment complexes on the eastern edge. The community is bordered by undeveloped land to the south, east and west, and was relatively inaccessible until the opening of the South Freeway in the early 1980s and the recent opening of the South Belt.

Highlights

- ✓ Houston City Council District D
- ✓ Houston Independent School District
- ✓ 5 Police beats (includes bordering beats)
- ✓ 4,323 acres (6.75 sq. miles)



**PLANNING &
DEVELOPMENT
DEPARTMENT**



South Acres / Crestmont Park: Land Use

Freeway	Commercial	Parks and Open Space
Rail Road	Office	Undeveloped
Super Neighborhood Boundary	Industrial	Agricultural Production
Single-family Residential	Public and Institutional	Open Water
Multi-family Residential	Transportation and Utilities	Unknown

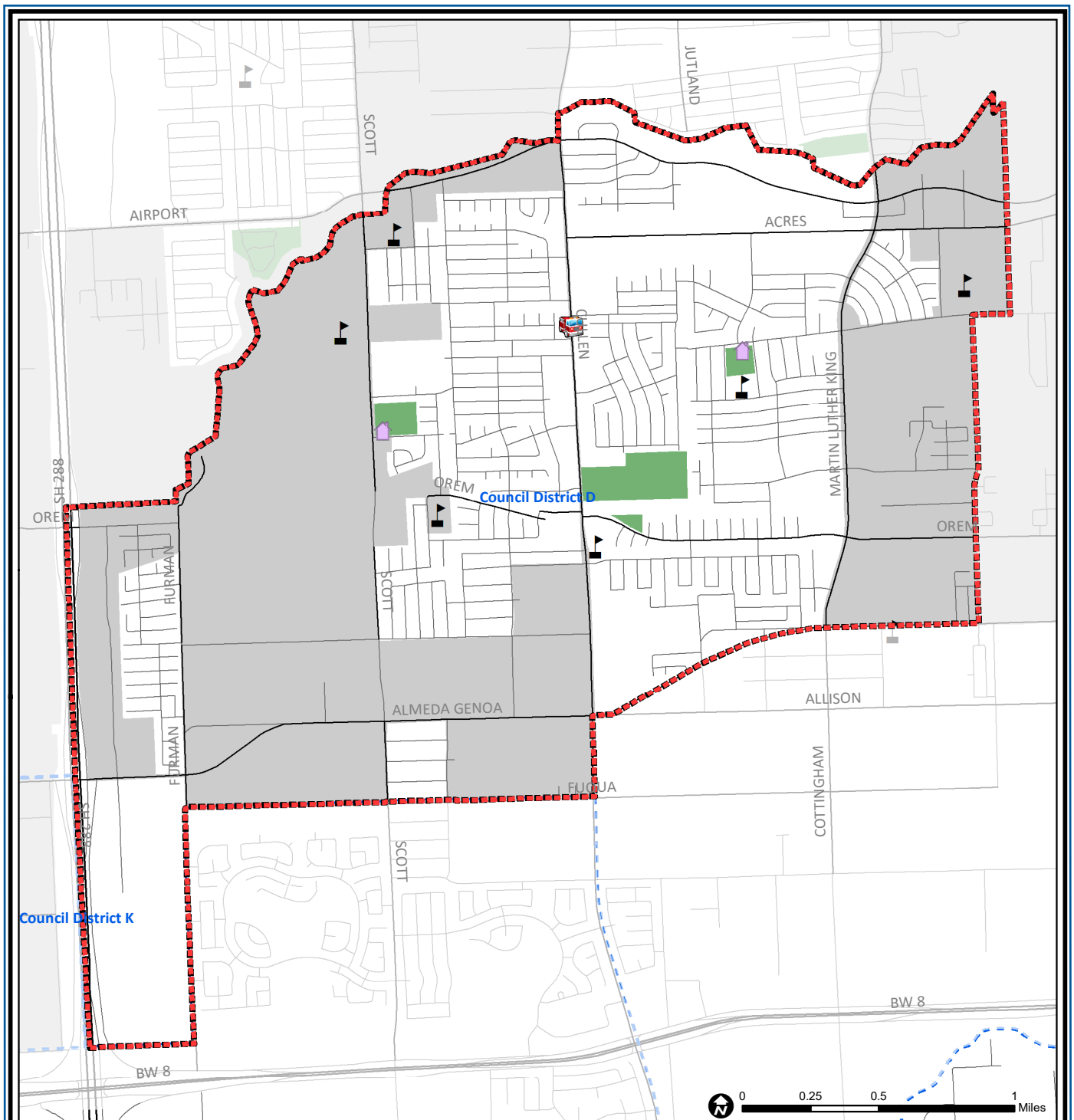
Source: City of Houston GIS Database,
Harris County Appraisal District

Date: May 24, 2019

This map is made available for reference purposes only and should not be substituted for a survey product. The City of Houston will not accept liability of any kind in conjunction with its use.



**PLANNING &
DEVELOPMENT
DEPARTMENT**



South Acres / Crestmont Park: Public Facilities

Source: City of Houston GIS Database

Date: May 2019

This map is made available for reference purposes only and should not be substituted for a survey product. The City of Houston will not accept liability of any kind in conjunction with its use.



**PLANNING &
DEVELOPMENT
DEPARTMENT**

Super Neighborhood Boundary

Community Centers

Fire Station

Police Station

School

Airports

Harris County Hospitals

Private Hospitals

Other Health Facilities

Library

Rail Road

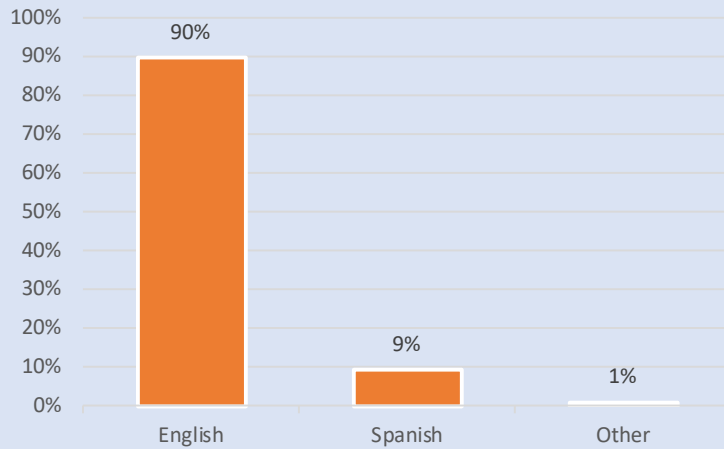
Metro Rail Stations

Metro Rail Line

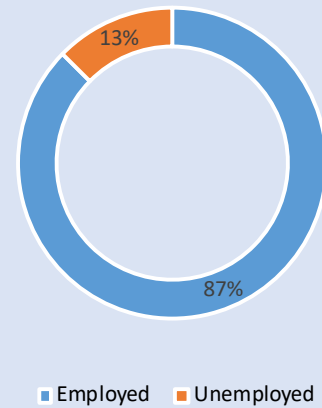
Parks

TIRZ

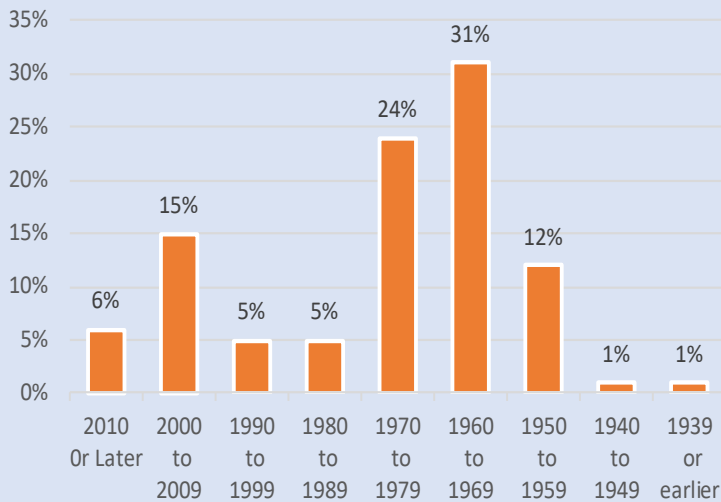
Language Spoken at Home



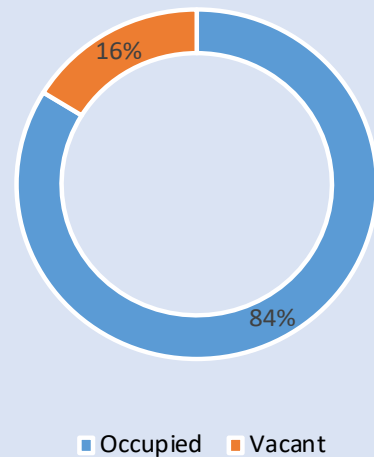
Employment Status



Housing Units by Year Built



Housing Occupancy



Source: U.S. Census Bureau, 2000
American Community Survey, 2013-2017 Estimates



**PLANNING &
DEVELOPMENT
DEPARTMENT**