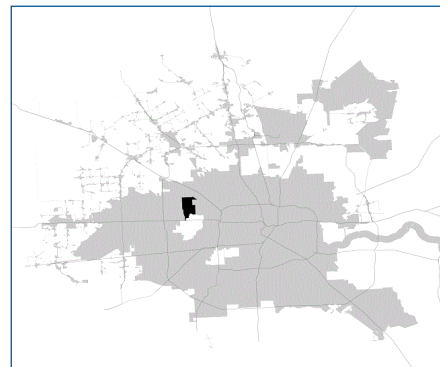


SUPER

Neighborhood

RESOURCE ASSESSMENT



	Super Neighborhood		Houston	
Pop. characteristics	2000	2017	2000	2017
Total population	29,074	28,573	1,953,631	2,267,336
Persons per sq. mile	7,774	7,644	3,166	3,394
Age of Population				
Under 5 years	10%	9%	8%	8%
5- 17 years	20%	21%	19%	17%
18- 64 years	62%	63%	64%	65%
65 and over	7%	7%	9%	10%
Ethnicity				
Non Hispanic Whites	26%	16%	31%	25%
Non Hispanic Blacks	4%	4%	25%	22%
Hispanics	65%	75%	37%	44%
Non Hispanic Asians	4%	3%	6%	7%
Non Hispanic Others	1%	2%	1%	2%
Income				
Under \$25,000	36%	29%	33%	26%
\$25,000 to \$49,999	34%	27%	31%	25%
\$50,000 to \$99,999	23%	27%	24%	26%
Over \$100,000	8%	17%	12%	23%
Median Household Income	\$39,105	\$45,182	\$36,616	\$49,399
Educational Status				
No Diploma	44%	37%	30%	22%
High School Diploma	22%	28%	20%	23%
Some College	20%	19%	23%	23%
Bachelor's or Higher	14%	16%	27%	32%
Housing and Households				
Total housing units	9,301	9,637	782,378	943,183
Occupied	95%	92%	92%	89%
Vacant	5%	8%	8%	11%
Total households	8,823	8,870	717,945	838,950
Family households	6,547	6,186	457,549	491,778
Median Housing Value	\$90,889	\$205,619	\$79,300	\$149,000

Description

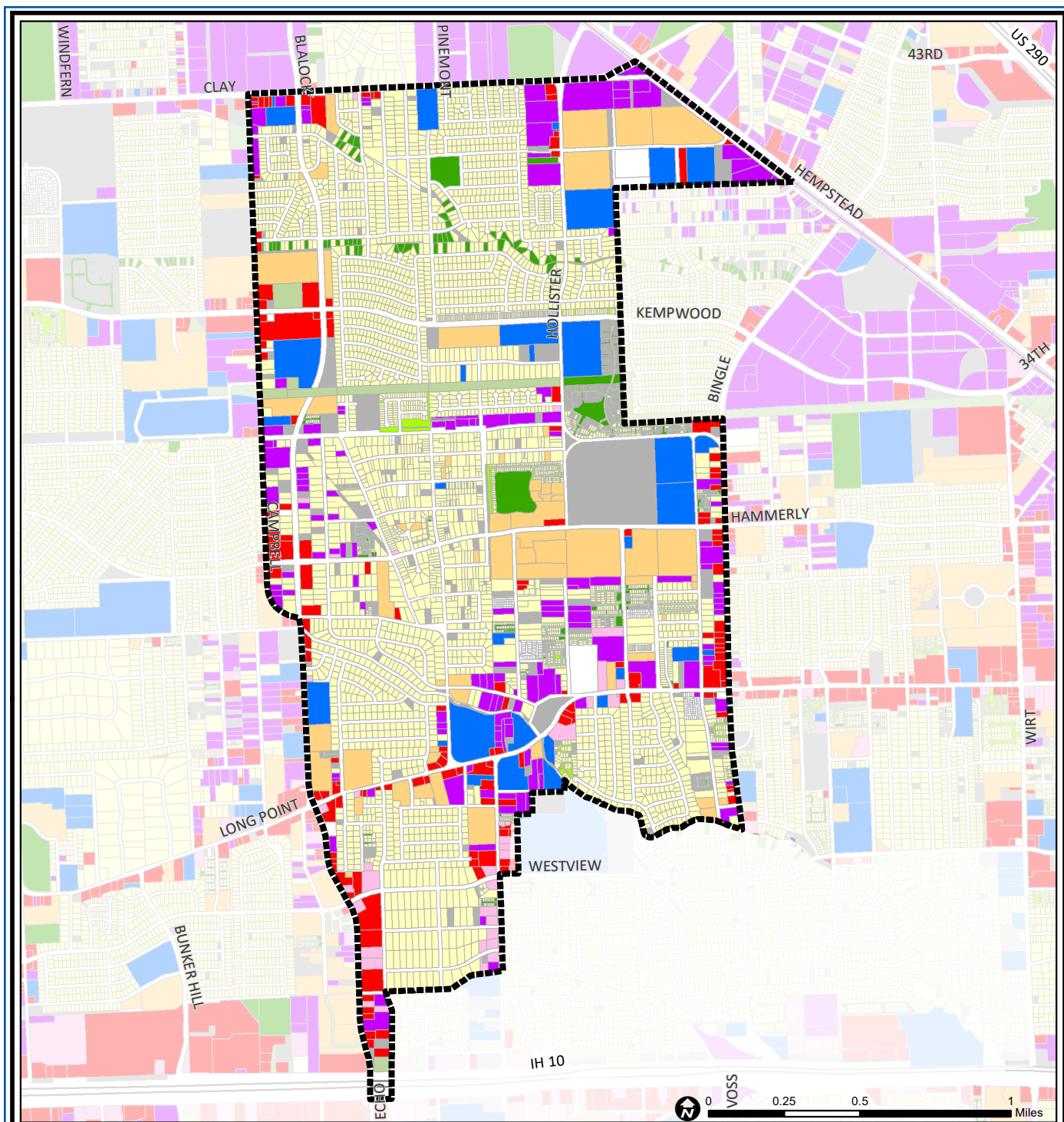
Spring Branch Center is the central portion of the larger Spring Branch community. It is located north of the Village of Spring Valley, south of Clay Road, west of Bingle and east of Blalock. It includes many typical small Spring Branch subdivisions, such as Spring Branch Oaks and Timber Creek. The northern part of the community includes larger subdivisions, such as Binglewood and Holley Terrace. Many apartment complexes are scattered through the area. Some deteriorated after the real estate collapse of the 1980s.

Highlights

- ✓ Houston City Council District A
- ✓ Cypress-Fairbanks Independent School District
- ✓ Spring Branch Independent School District
- ✓ 7 Police beats (includes bordering beats)
- ✓ 2,391 acres (3.74 sq. miles)



**PLANNING &
DEVELOPMENT
DEPARTMENT**



Spring Branch Central: Land Use

Freeway	Commercial	Parks and Open Space
Rail Road	Office	Undeveloped
Super Neighborhood Boundary	Industrial	Agricultural Production
Single-family Residential	Public and Institutional	Open Water
Multi-family Residential	Transportation and Utilities	Unknown

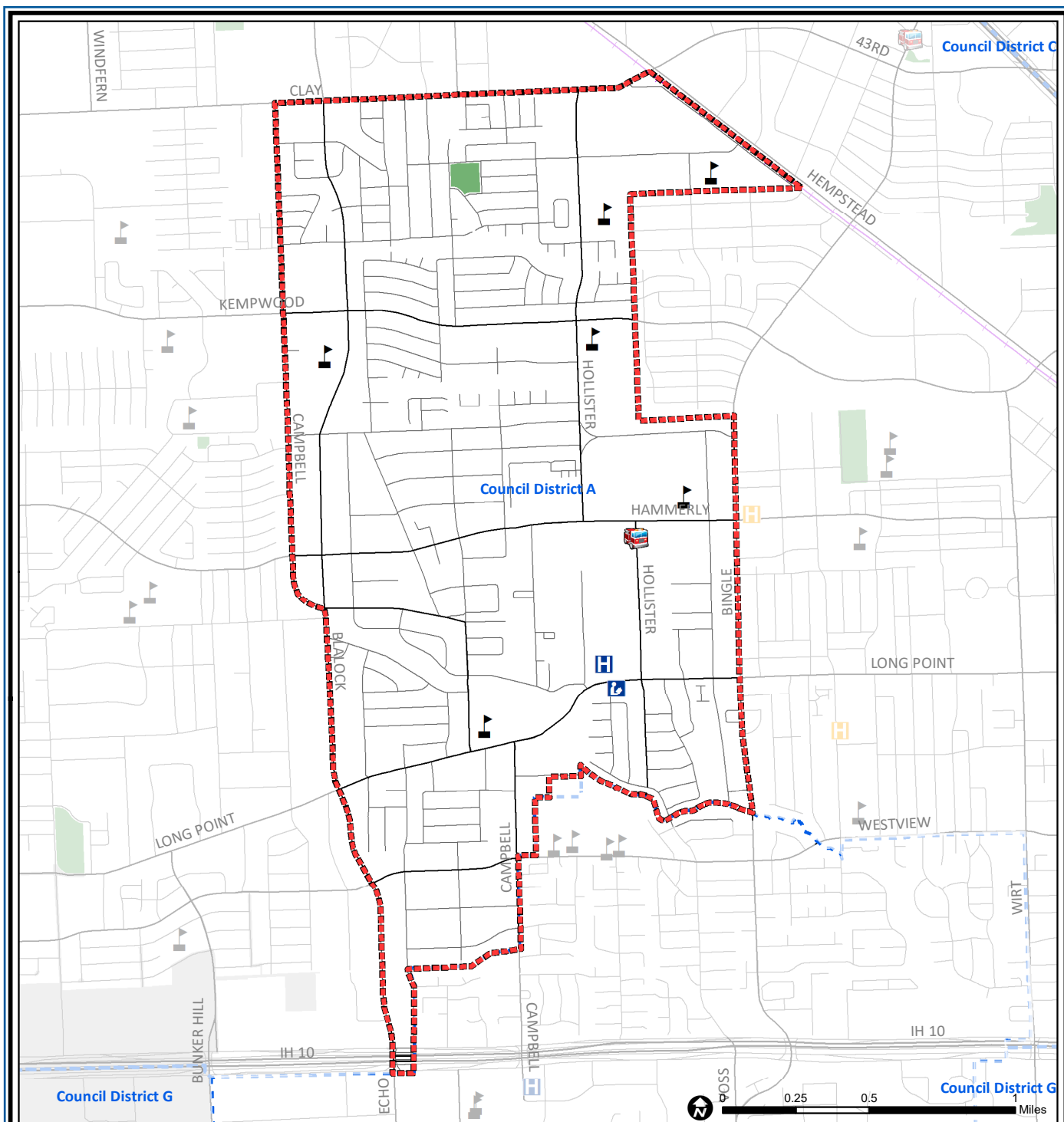
Source: City of Houston GIS Database,
Harris County Appraisal District

Date: May 24, 2019

This map is made available for reference purposes only and should not be substituted for a survey product. The City of Houston will not accept liability of any kind in conjunction with its use.



**PLANNING &
DEVELOPMENT
DEPARTMENT**



Spring Branch Central: Public Facilities

- Super Neighborhood Boundary
- Community Centers
- Fire Station
- Police Station
- School

- Airports
- Harris County Hospitals
- Private Hospitals
- Other Health Facilities
- Library

- Rail Road
- Metro Rail Stations
- Metro Rail Line
- Parks
- TIRZ

Source: City of Houston GIS Database

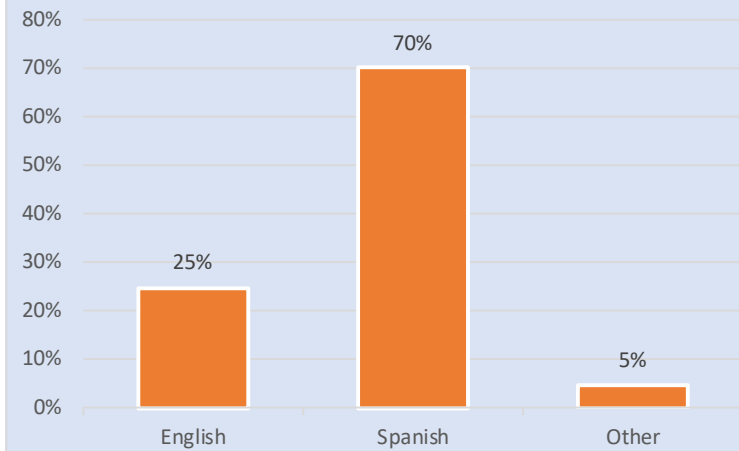
Date: May 2019

This map is made available for reference purposes only and should not be substituted for a survey product. The City of Houston will not accept liability of any kind in conjunction with its use.

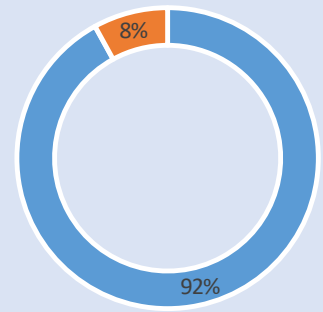


**PLANNING &
DEVELOPMENT
DEPARTMENT**

Language Spoken at Home

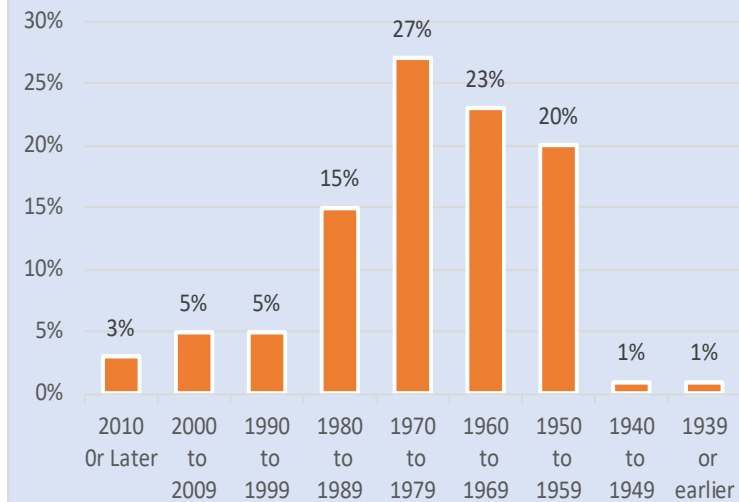


Employment Status

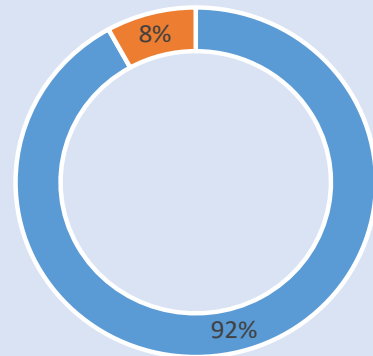


■ Employed ■ Unemployed

Housing Units by Year Built



Housing Occupancy



■ Occupied ■ Vacant

Source: U.S. Census Bureau, 2000
American Community Survey, 2013-2017 Estimates



**PLANNING &
DEVELOPMENT
DEPARTMENT**