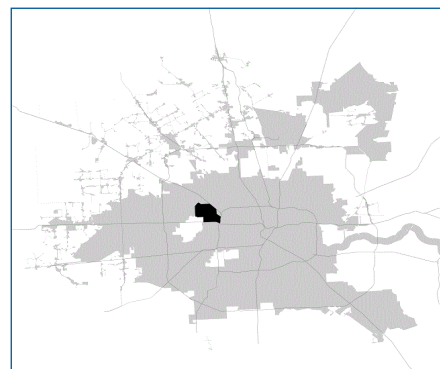


SUPER

Neighborhood

RESOURCE ASSESSMENT



	Super Neighborhood		Houston	
Pop. characteristics	2000	2017	2000	2017
Total population	26,491	27,250	1,953,631	2,267,336
Persons per sq. mile	4,336	4,458	3,166	3,394

Age of Population

Under 5 years	10%	8%	8%	8%
5- 17 years	20%	20%	19%	17%
18- 64 years	62%	62%	64%	65%
65 and over	8%	10%	9%	10%

Ethnicity

Non Hispanic Whites	30%	29%	31%	25%
Non Hispanic Blacks	4%	4%	25%	22%
Hispanics	61%	62%	37%	44%
Non Hispanic Asians	4%	3%	6%	7%
Non Hispanic Others	1%	2%	1%	2%

Income

Under \$25,000	37%	27%	33%	26%
\$25,000 to \$49,999	33%	28%	31%	25%
\$50,000 to \$99,999	22%	23%	24%	26%
Over \$100,000	8%	22%	12%	23%

Median Household Income	\$32,733	\$52,486	\$36,616	\$49,399
--------------------------------	----------	----------	----------	----------

Educational Status

No Diploma	46%	31%	30%	22%
High School Diploma	19%	26%	20%	23%
Some College	18%	16%	23%	23%
Bachelor's or Higher	16%	27%	27%	32%

Housing and Households

Total housing units	8,541	10,263	782,378	943,183
Occupied	42%	89%	92%	89%
Vacant	9%	11%	8%	11%
Total households	1,500	9,196	717,945	838,950
Family households	5,864	5,932	457,549	491,778
Median Housing Value	\$85,729	\$292,195	\$79,300	\$149,000

Description

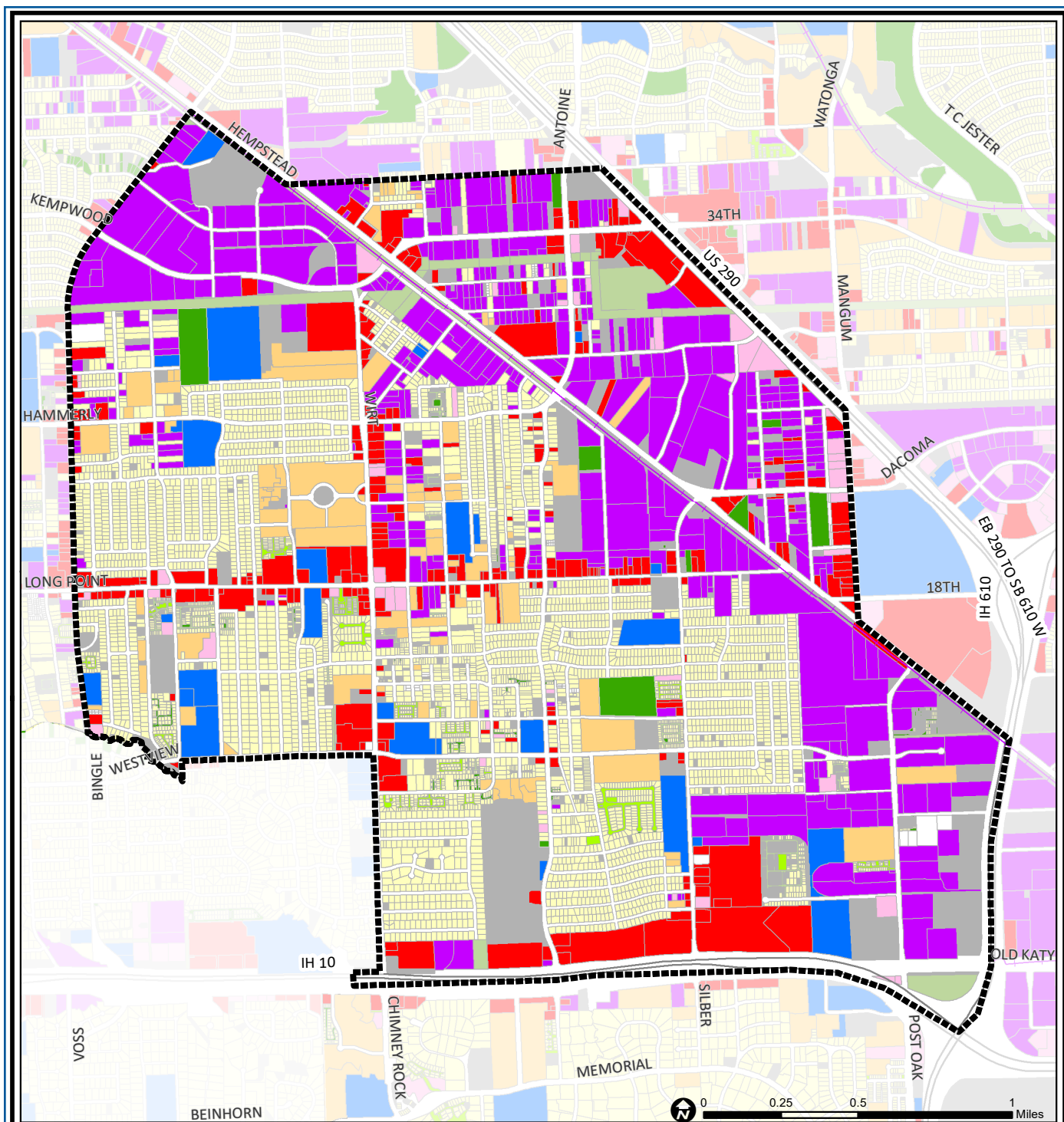
Spring Branch East, located east of Bingle, is the oldest part of the larger Spring Branch community. Many industrial and warehouse developments are found in the northern and eastern parts of the community near Hempstead Highway and US 290. The former site of the Cameron Iron Works on I-10, the community's southern boundary, is now being redeveloped as a retail and entertainment complex. New home construction is occurring near Wirt Road and in several gated subdivisions replacing deteriorated apartment complexes. Afton Village, Brykerwoods, Monarch Oaks, Ridgcrest, Hillendahl Acres, Long Point Oaks, Pine Terrace, and Westview Terrace are some of the other subdivisions in the area.

Highlights

- ✓ Houston City Council District A
- ✓ Houston Independent School District
- ✓ Spring Branch Independent School District
- ✓ 5 Police beats (includes bordering beats)
- ✓ 3,912 acres (6.11 sq. miles)



**PLANNING &
DEVELOPMENT
DEPARTMENT**



Spring Branch East: Land Use

Freeway	Commercial	Parks and Open Space
Rail Road	Office	Undeveloped
Super Neighborhood Boundary	Industrial	Agricultural Production
Single-family Residential	Public and Institutional	Open Water
Multi-family Residential	Transportation and Utilities	Unknown

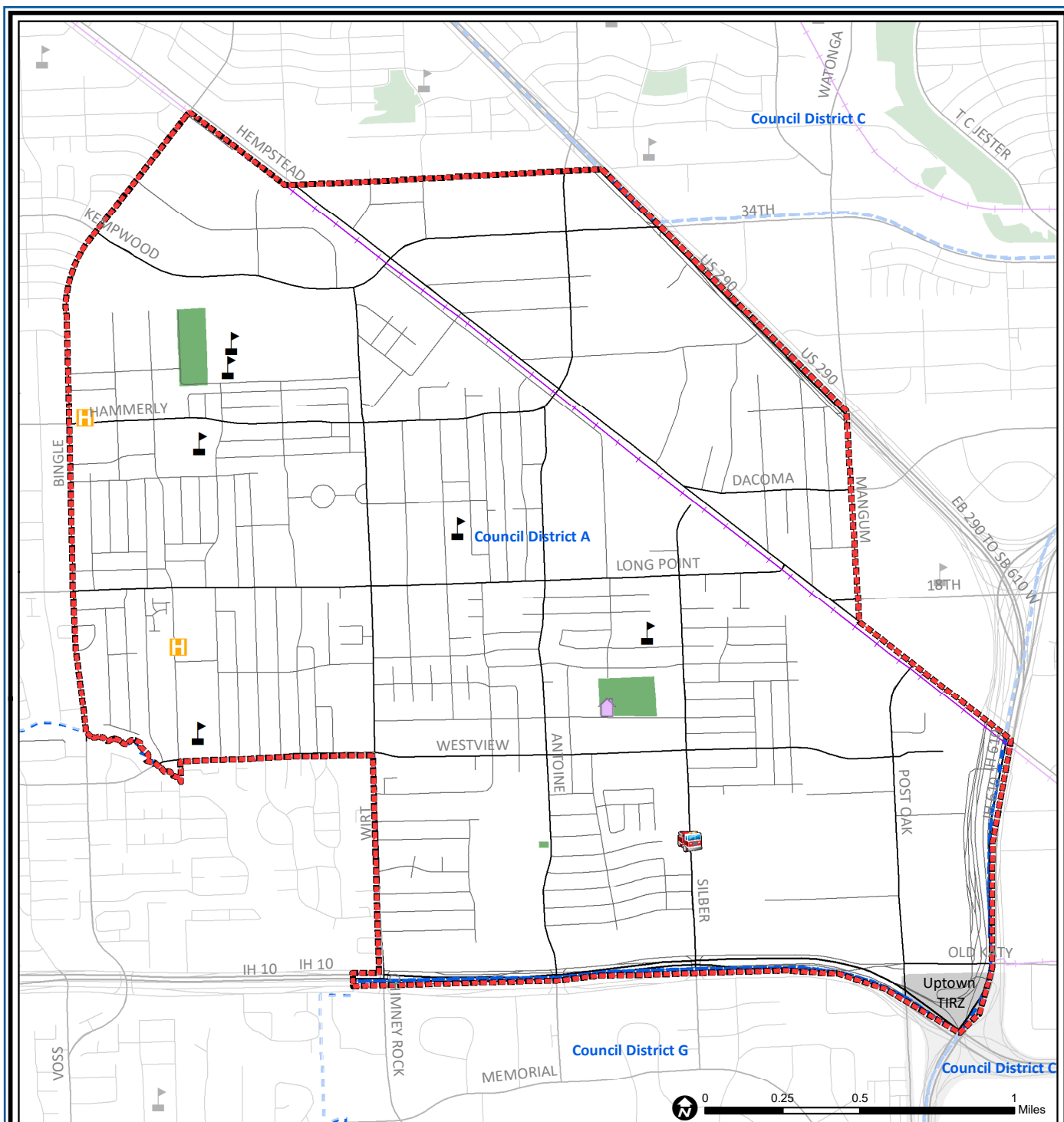
Source: City of Houston GIS Database,
Harris County Appraisal District

Date: May 24, 2019

This map is made available for reference purposes only and should not be substituted for a survey product. The City of Houston will not accept liability of any kind in conjunction with its use.



**PLANNING &
DEVELOPMENT
DEPARTMENT**



Spring Branch East: Public Facilities

- Super Neighborhood Boundary
- Community Centers
- Fire Station
- Police Station
- School

- Airports
- Harris County Hospitals
- Private Hospitals
- Other Health Facilities
- Library

- Rail Road
- Metro Rail Stations
- Metro Rail Line
- Parks
- TIRZ

Source: City of Houston GIS Database

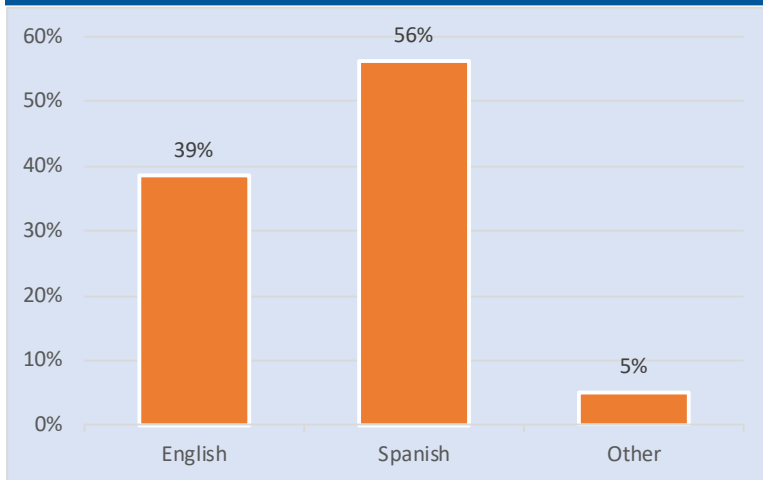
Date: May 2019

This map is made available for reference purposes only and should not be substituted for a survey product. The City of Houston will not accept liability of any kind in conjunction with its use.

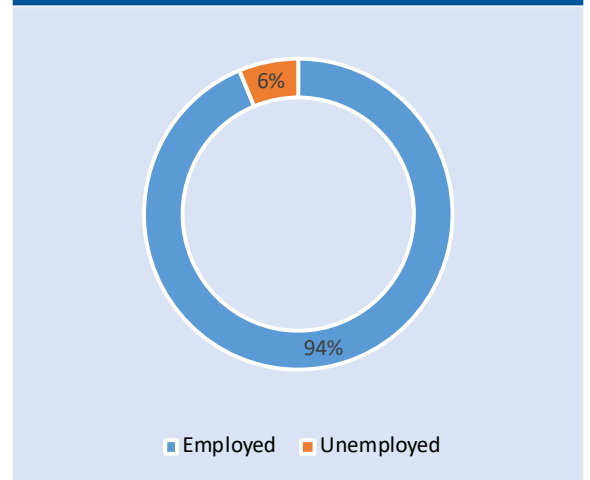


**PLANNING &
DEVELOPMENT
DEPARTMENT**

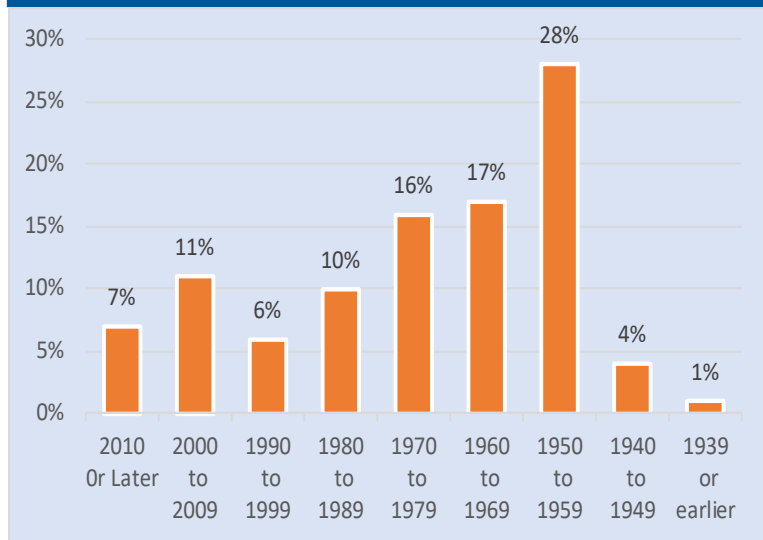
Language Spoken at Home



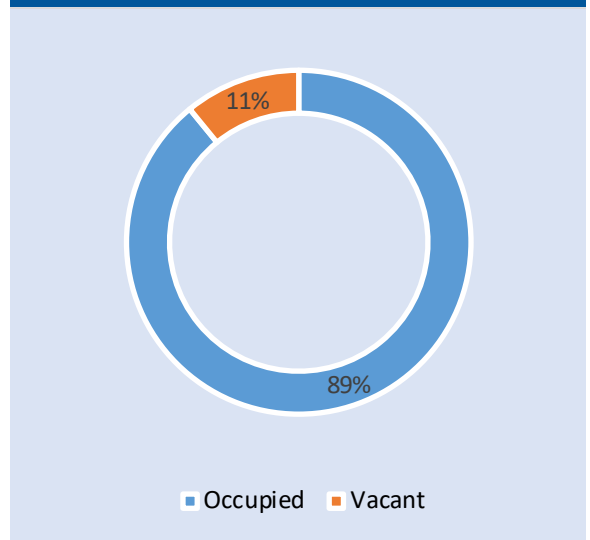
Employment Status



Housing Units by Year Built



Housing Occupancy



Source: U.S. Census Bureau, 2000
American Community Survey, 2013-2017 Estimates



**PLANNING &
DEVELOPMENT
DEPARTMENT**