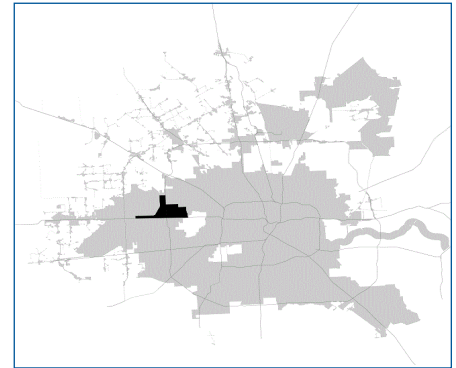


# SUPER

## Neighborhood

### RESOURCE ASSESSMENT



	Super Neighborhood		Houston	
Pop. characteristics	2000	2017	2000	2017
Total population	32,423	32,006	1,953,631	2,267,336
Persons per sq. mile	4,423	3,896	3,166	3,394
<b>Age of Population</b>				
Under 5 years	9%	8%	8%	8%
5- 17 years	20%	17%	19%	17%
18- 64 years	63%	66%	64%	65%
65 and over	8%	9%	9%	10%
<b>Ethnicity</b>				
Non Hispanic Whites	35%	32%	31%	25%
Non Hispanic Blacks	6%	5%	25%	22%
Hispanics	53%	56%	37%	44%
Non Hispanic Asians	5%	6%	6%	7%
Non Hispanic Others	1%	1%	1%	2%
<b>Income</b>				
Under \$25,000	31%	19%	33%	26%
\$25,000 to \$49,999	32%	25%	31%	25%
\$50,000 to \$99,999	28%	33%	24%	26%
Over \$100,000	9%	23%	12%	23%
<b>Median Household Income</b>	\$39,645	\$58,305	\$36,616	\$49,399
<b>Educational Status</b>				
No Diploma	35%	28%	30%	22%
High School Diploma	20%	22%	20%	23%
Some College	25%	23%	23%	23%
Bachelor's or Higher	21%	27%	27%	32%
<b>Housing and Households</b>				
Total housing units	11,032	12,299	782,378	943,183
Occupied	95%	88%	92%	89%
Vacant	5%	12%	8%	11%
Total households	10,469	10,819	717,945	838,950
Family households	7,613	7,430	457,549	491,778
Median Housing Value	\$81,359	\$205,709	\$79,300	\$149,000

### Description

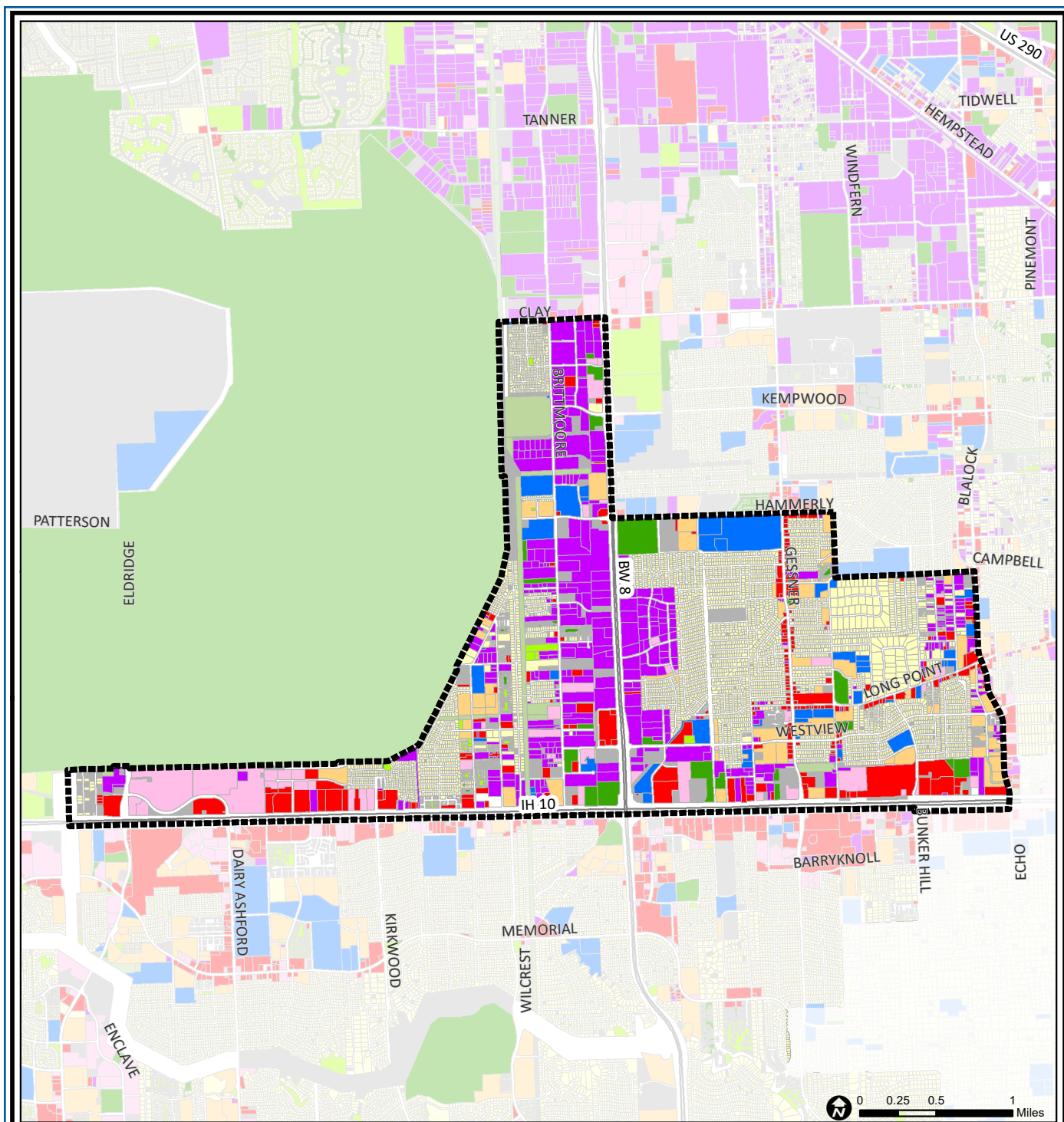
Spring Branch West is located north of I-10 and west of Blalock. Gessner Road and W. Sam Houston Parkway North are the major north-south arteries in the area. Light industrial uses, including distribution centers, are located along the Parkway. The majority of retail commercial development is found along Gessner Road and Interstate 10. The area is largely deed restricted single-family residential. Multi-family uses are concentrated along Long Point Road, Gessner and Blalock. New home construction has recently resumed on small sites in the southeastern part of the community where land prices have risen dramatically.

### Highlights

- ✓ Houston City Council Districts A & G
- ✓ Cypress-Fairbanks Independent School District
- ✓ Spring Branch Independent School District
- ✓ 8 Police beats (includes bordering beats)
- ✓ 5,260 acres (8.22 sq. miles)



**PLANNING &  
DEVELOPMENT  
DEPARTMENT**



## Spring Branch West: Land Use

Freeway	Commercial	Parks and Open Space
Rail Road	Office	Undeveloped
Super Neighborhood Boundary	Industrial	Agricultural Production
Single-family Residential	Public and Institutional	Open Water
Multi-family Residential	Transportation and Utilities	Unknown

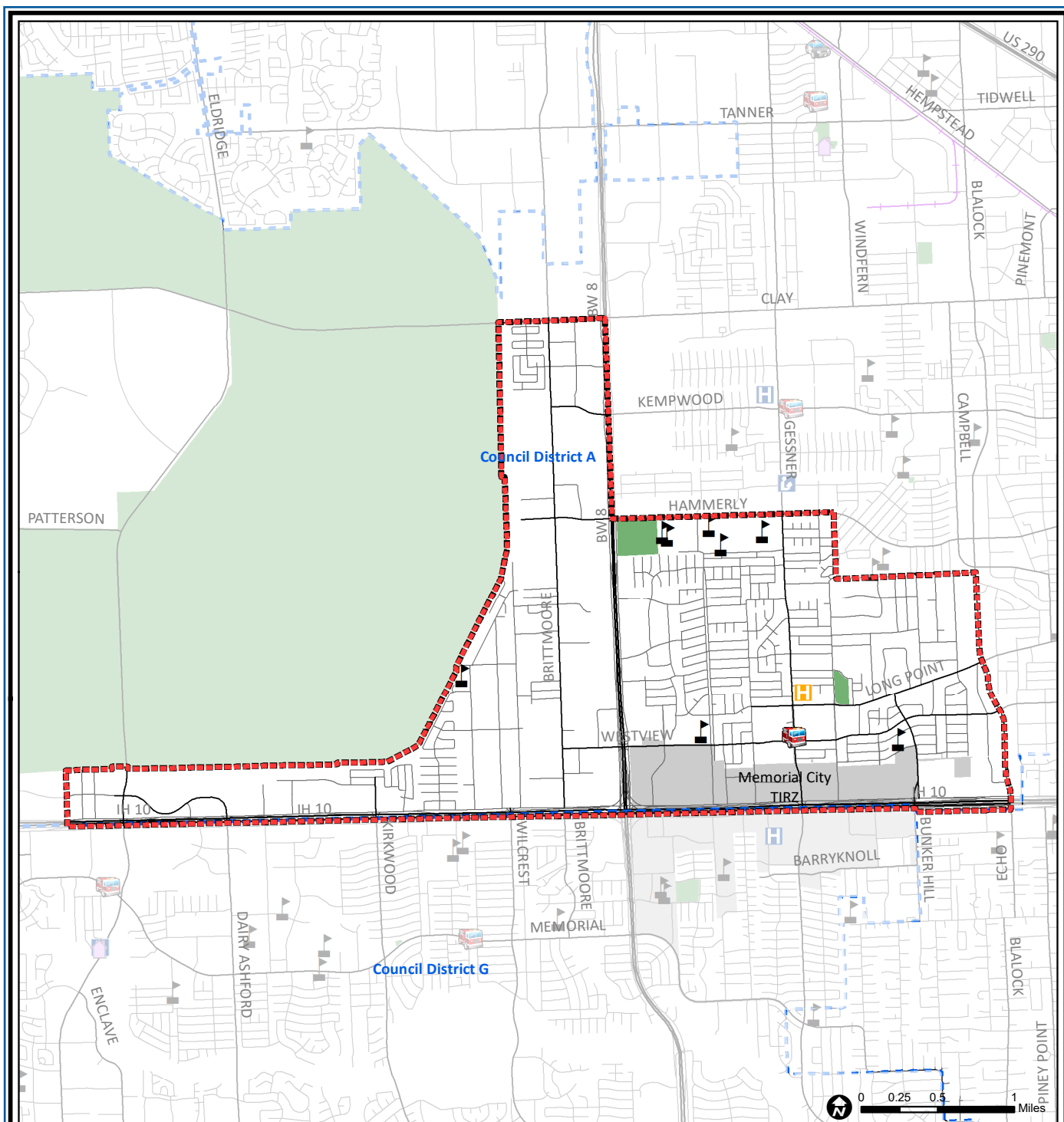
Source: City of Houston GIS Database,  
Harris County Appraisal District

Date: May 24, 2019

This map is made available for reference purposes only and should not be substituted for a survey product. The City of Houston will not accept liability of any kind in conjunction with its use.



**PLANNING &  
DEVELOPMENT  
DEPARTMENT**



## Spring Branch West: Public Facilities

Super Neighborhood Boundary

Community Centers

Fire Station

Police Station

School

Airports

Harris County Hospitals

Private Hospitals

Other Health Facilities

Library

Rail Road

Metro Rail Stations

Metro Rail Line

Parks

TIRZ

Source: City of Houston GIS Database

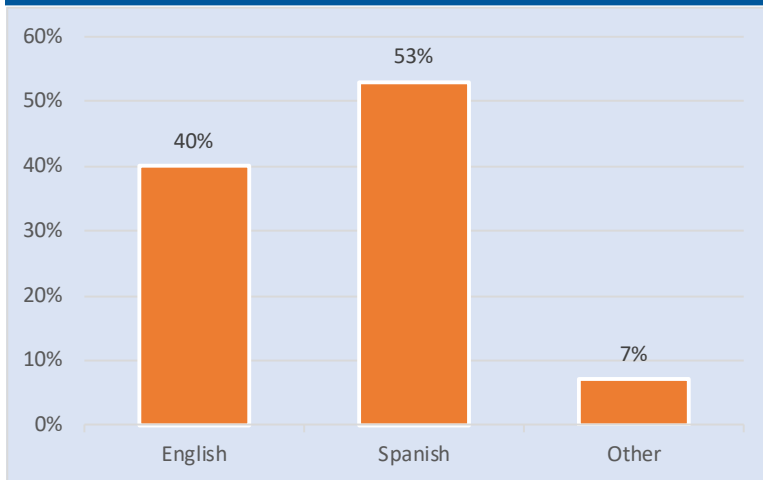
Date: May 2019

This map is made available for reference purposes only and should not be substituted for a survey product. The City of Houston will not accept liability of any kind in conjunction with its use.



**PLANNING &  
DEVELOPMENT  
DEPARTMENT**

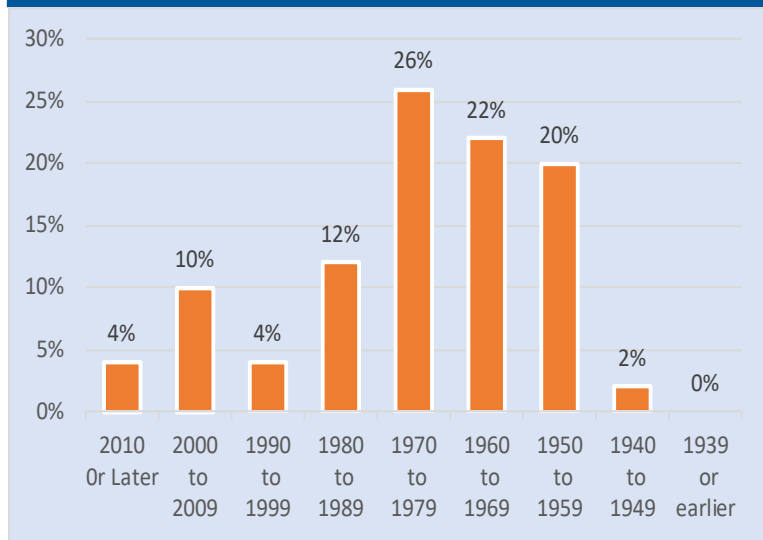
### Language Spoken at Home



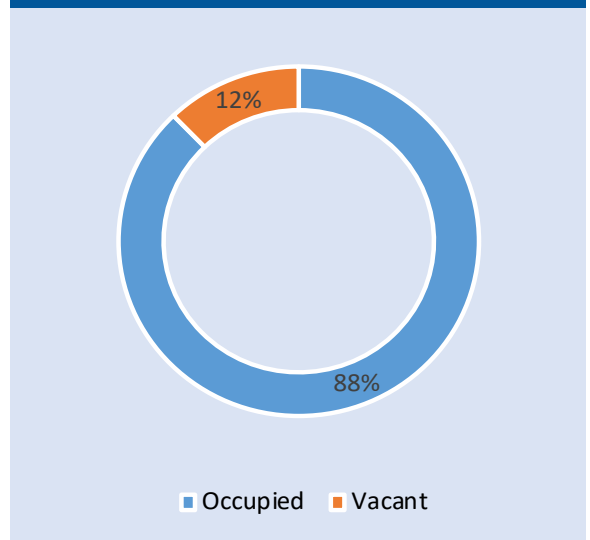
### Employment Status



### Housing Units by Year Built



### Housing Occupancy



Source: U.S. Census Bureau, 2000  
American Community Survey, 2013-2017 Estimates



**PLANNING &  
DEVELOPMENT  
DEPARTMENT**