

SUPER

Neighborhood

RESOURCE ASSESSMENT



	Super Neighborhood		Houston	
Pop. characteristics	2000	2017	2000	2017
Total population	18,552	31,469	1,953,631	2,267,336
Persons per sq. mile	2,337	3,926	3,166	3,394
Age of Population				
Under 5 years	7%	5%	8%	8%
5- 17 years	16%	5%	19%	17%
18- 64 years	69%	83%	64%	65%
65 and over	8%	7%	9%	10%
Ethnicity				
Non Hispanic Whites	34%	59%	31%	25%
Non Hispanic Blacks	8%	6%	25%	22%
Hispanics	56%	23%	37%	44%
Non Hispanic Asians	2%	8%	6%	7%
Non Hispanic Others	1%	4%	1%	2%
Income				
Under \$25,000	34%	8%	33%	26%
\$25,000 to \$49,999	26%	8%	31%	25%
\$50,000 to \$99,999	23%	24%	24%	26%
Over \$100,000	17%	60%	12%	23%
Median Household Income	\$43,892	\$120,572	\$36,616	\$49,399
Educational Status				
No Diploma	39%	5%	30%	22%
High School Diploma	13%	6%	20%	23%
Some College	17%	14%	23%	23%
Bachelor's or Higher	31%	75%	27%	32%
Housing and Households				
Total housing units	8,669	18,097	782,378	943,183
Occupied	85%	92%	92%	89%
Vacant	15%	8%	8%	11%
Total households	7,396	16,596	717,945	838,950
Family households	3,642	6,921	457,549	491,778
Median Housing Value	\$139,959	\$391,242	\$79,300	\$149,000

Description

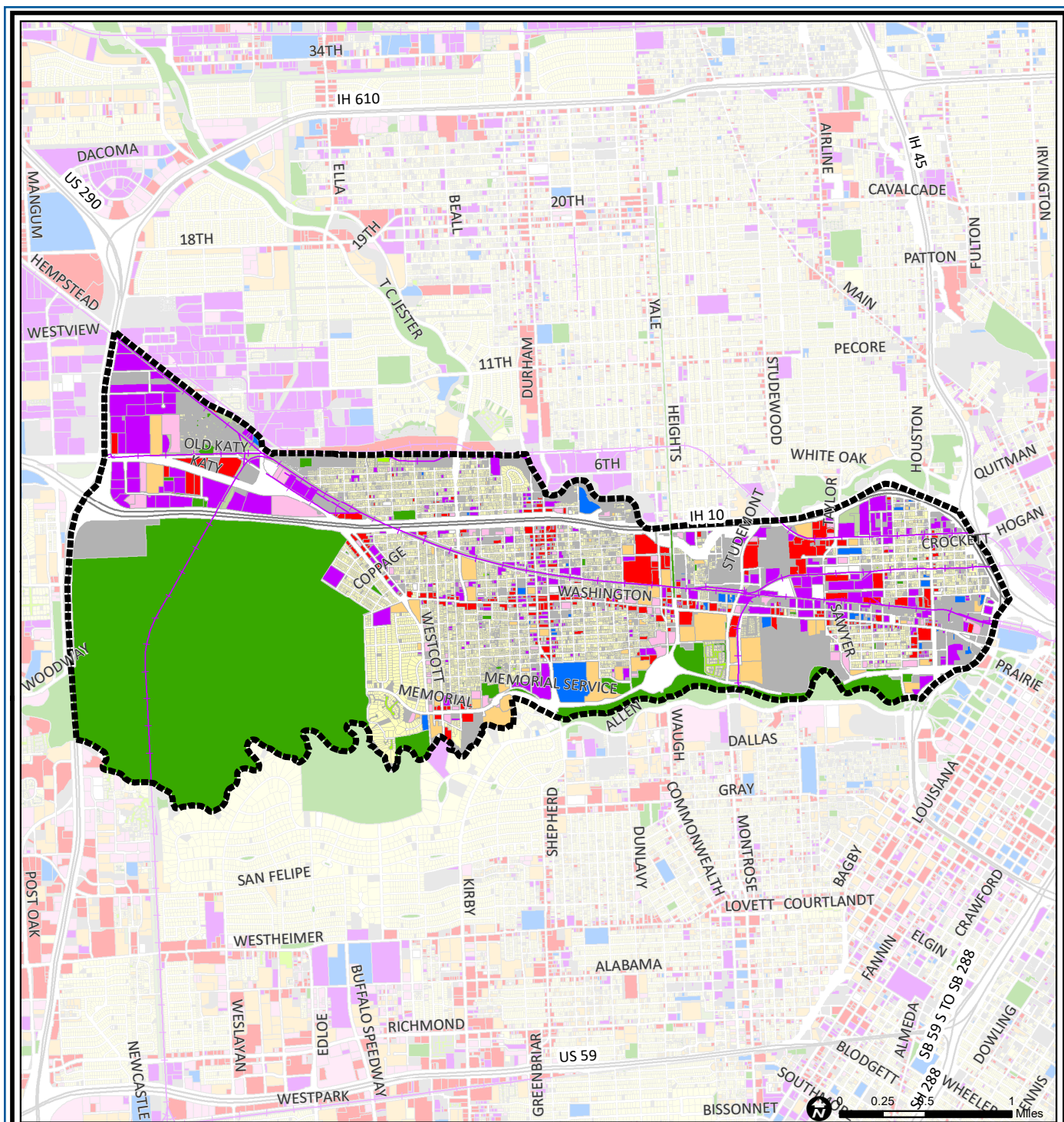
Memorial Park/Washington Avenue is a corridor stretching from the northern edge of downtown on the east to Loop 610 on the west. It includes many of Houston's most historic sites such as Memorial Park, one of the city's primary environmental assets located on the former grounds of Camp Logan, a World War I Army training camp. Residential areas, in the west, adjacent to the park, are rapidly redeveloping with high end single-family homes. The eastern end of the area includes First and Sixth Wards, political geographic units, which date from the 19th Century. Sixth Ward contains the city's best Victorian era buildings. Interstate 10 creates a barrier on the northern boundary.

Highlights

- ✓ Houston City Council Districts C & H
- ✓ Houston Independent School District
- ✓ 14 Police beats (includes bordering beats)
- ✓ 5,081 acres (7.94 sq. miles)



**PLANNING &
DEVELOPMENT
DEPARTMENT**



Washington Avenue Coalition / Memorial Park: Land Use

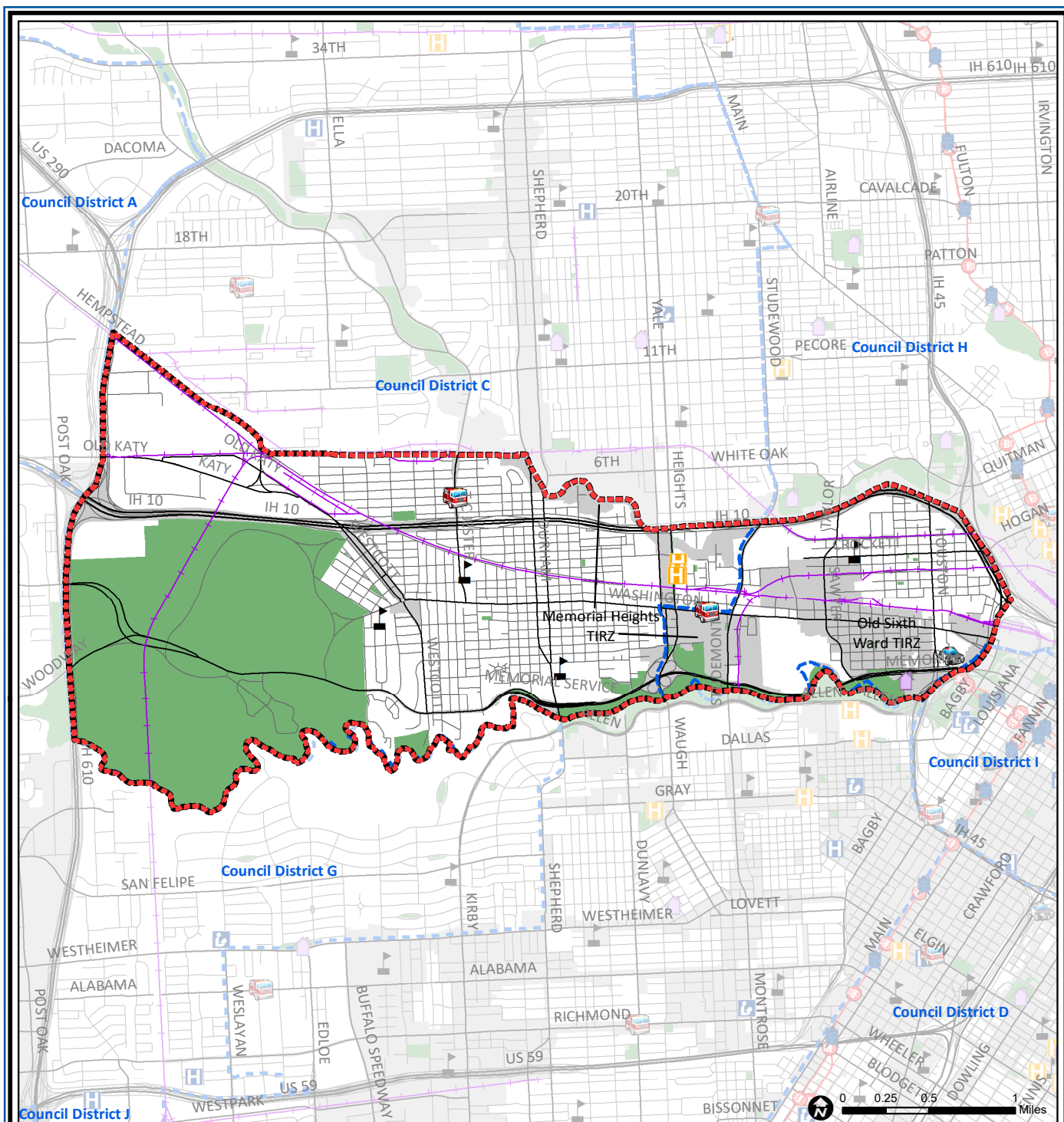
Source: City of Houston GIS Database,
Harris County Appraisal District

Date: May 24, 2019

This map is made available for reference purposes only and should not be substituted for a survey product. The City of Houston will not accept liability of any kind in conjunction with its use.



**PLANNING &
DEVELOPMENT
DEPARTMENT**



Washington Ave. Coalition/Memorial Park: Public Facilities

Source: City of Houston GIS Database

Date: May 2019

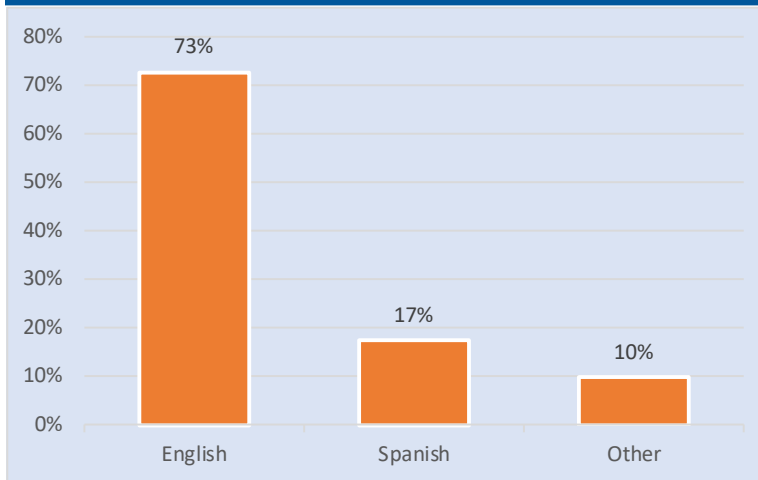
- | | | |
|-----------------------------|-------------------------|---------------------|
| Super Neighborhood Boundary | Airports | Rail Road |
| Community Centers | Harris County Hospitals | Metro Rail Stations |
| Fire Station | Private Hospitals | Metro Rail Line |
| Police Station | Other Health Facilities | Parks |
| School | Library | TIRZ |

This map is made available for reference purposes only and should not be substituted for a survey product. The City of Houston will not accept liability of any kind in conjunction with its use.

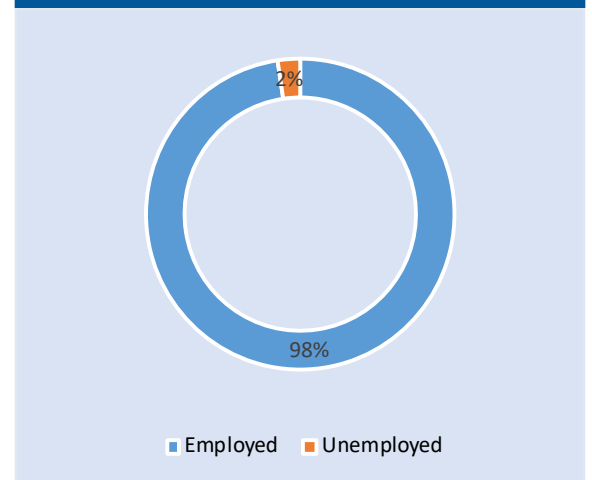


**PLANNING &
DEVELOPMENT
DEPARTMENT**

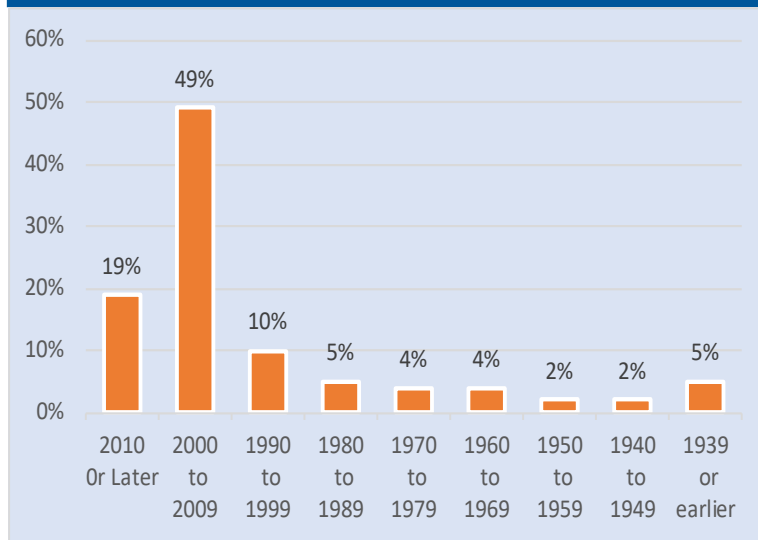
Language Spoken at Home



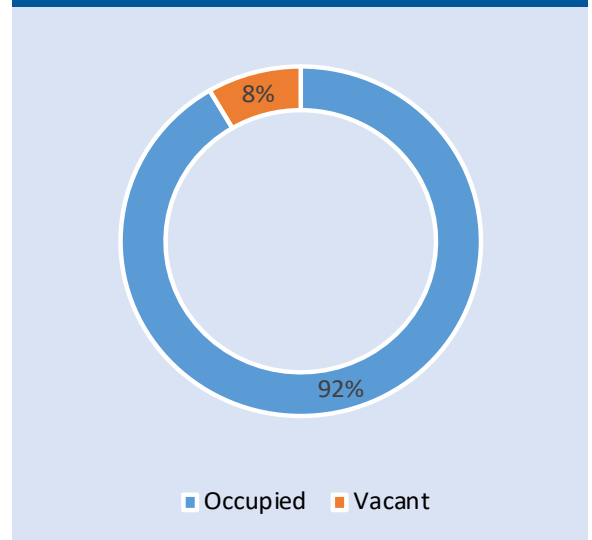
Employment Status



Housing Units by Year Built



Housing Occupancy



Source: U.S. Census Bureau, 2000
American Community Survey, 2013-2017 Estimates



**PLANNING &
DEVELOPMENT
DEPARTMENT**