

SUPER

Neighborhood

RESOURCE ASSESSMENT



	Super Neighborhood		Houston	
Pop. characteristics	2000	2017	2000	2017
Total population	19,488	21,996	1,953,631	2,267,336
Persons per sq. mile	10,097	10,080	3,166	3,394
Age of Population				
Under 5 years	13%	14%	8%	8%
5- 17 years	19%	21%	19%	17%
18- 64 years	66%	62%	64%	65%
65 and over	2%	3%	9%	10%
Ethnicity				
Non Hispanic Whites	7%	3%	31%	25%
Non Hispanic Blacks	42%	21%	25%	22%
Hispanics	44%	72%	37%	44%
Non Hispanic Asians	6%	4%	6%	7%
Non Hispanic Others	2%	0%	1%	2%
Income				
Under \$25,000	52%	46%	33%	26%
\$25,000 to \$49,999	36%	33%	31%	25%
\$50,000 to \$99,999	11%	17%	24%	26%
Over \$100,000	1%	4%	12%	23%
Median Household Income	\$23,838	\$29,901	\$36,616	\$49,399
Educational Status				
No Diploma	40%	40%	30%	22%
High School Diploma	21%	33%	20%	23%
Some College	26%	16%	23%	23%
Bachelor's or Higher	14%	11%	27%	32%
Housing and Households				
Total housing units	8,179	9,609	782,378	943,183
Occupied	91%	82%	92%	89%
Vacant	9%	18%	8%	11%
Total households	7,428	7,920	717,945	838,950
Family households	4,445	4,601	457,549	491,778
Median Housing Value	\$63,579	\$72,735	\$79,300	\$149,000

Description

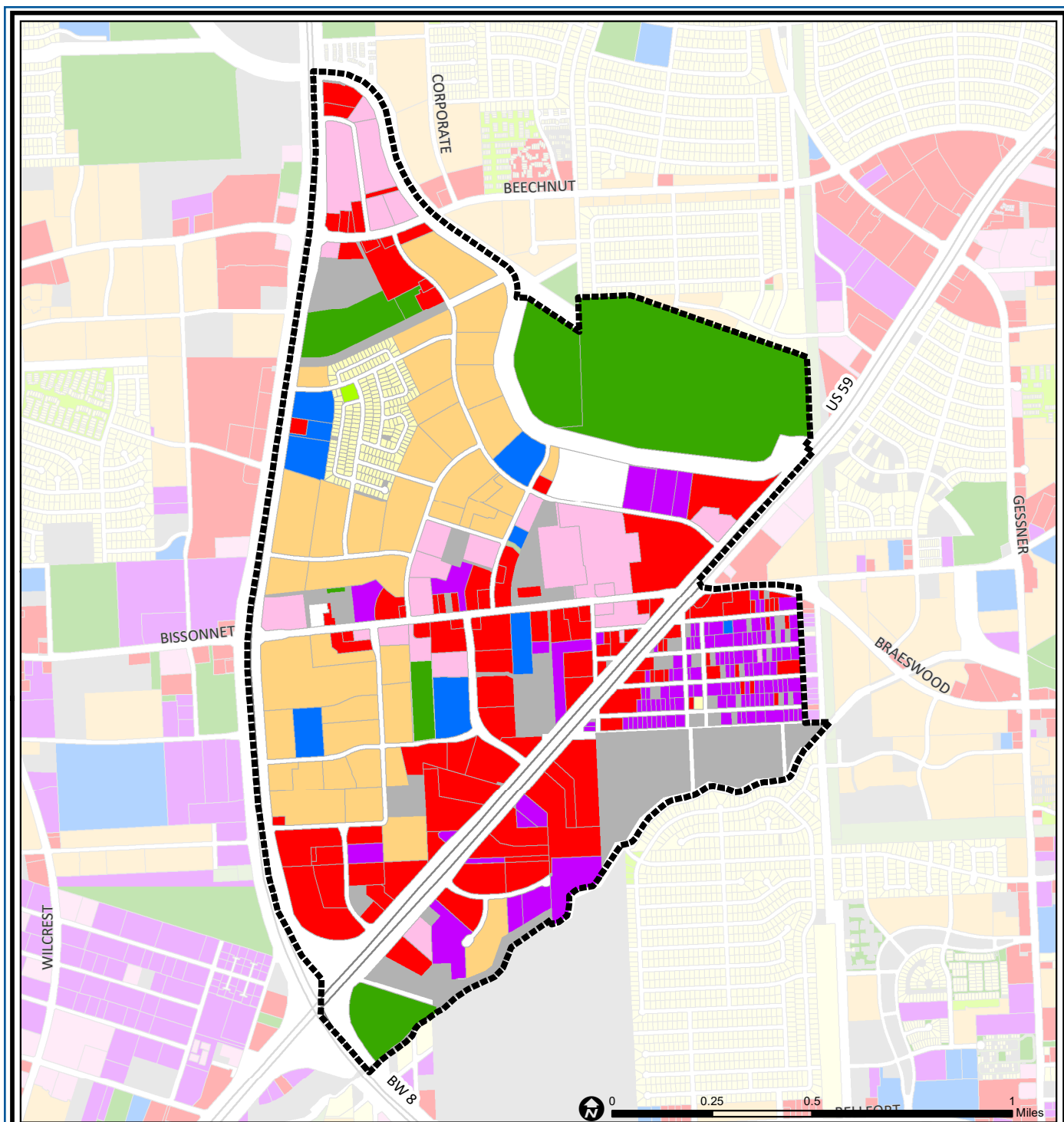
Westwood is located just inside Beltway 8 at the Southwest Freeway. The area is primarily commercial and multi-family residential; only 2.6% is single-family. It is served by Alief Independent School District.

Highlights

- ✓ Houston City Council District J
- ✓ Alief Independent School District
- ✓ Houston Independent School District
- ✓ 4 Police beats (includes bordering beats)
- ✓ 1,235 acres (1.93 sq. miles)



**PLANNING &
DEVELOPMENT
DEPARTMENT**



Westwood: Land Use

Freeway	Commercial	Parks and Open Space
Rail Road	Office	Undeveloped
Super Neighborhood Boundary	Industrial	Agricultural Production
Single-family Residential	Public and Institutional	Open Water
Multi-family Residential	Transportation and Utilities	Unknown

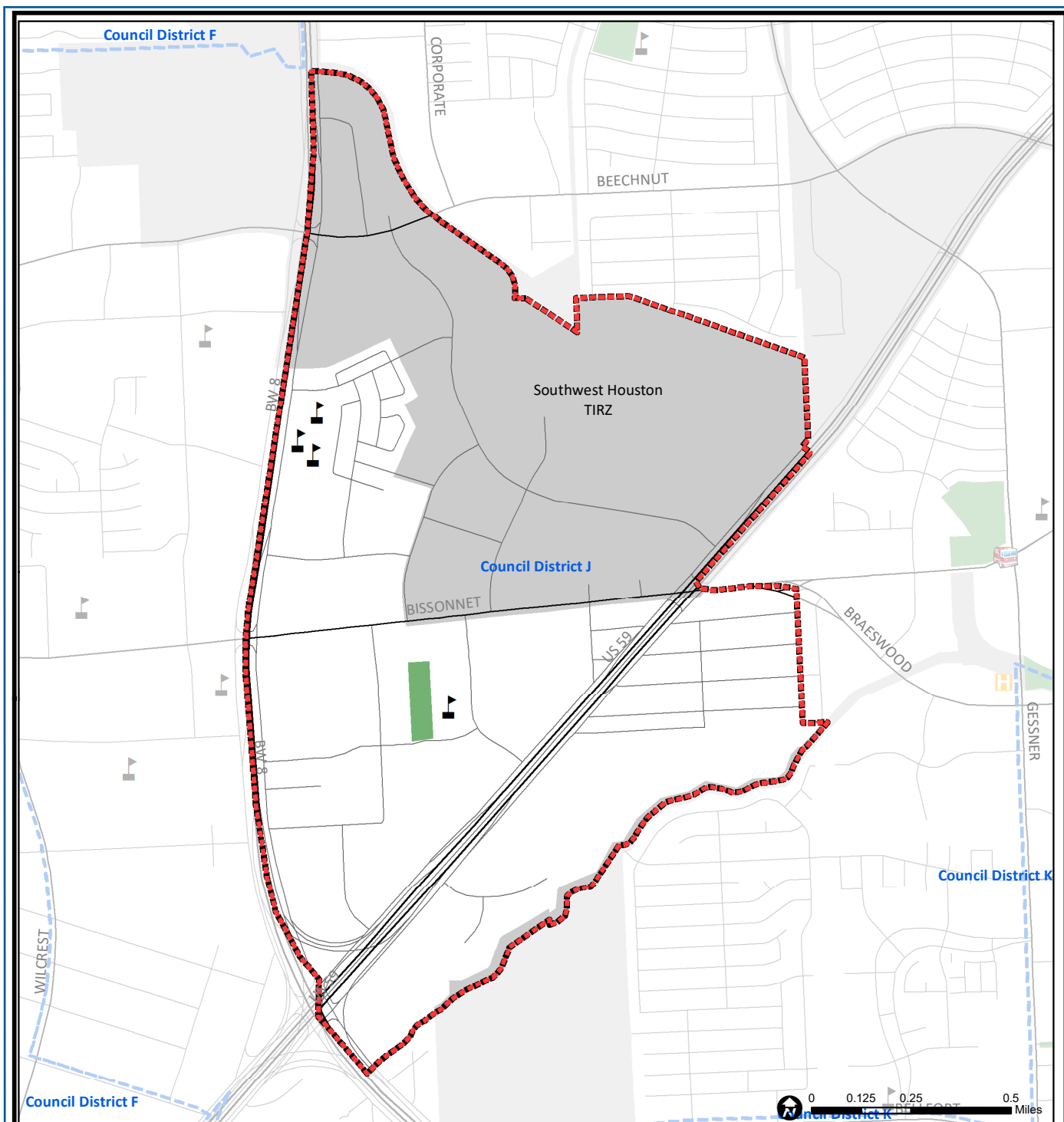
Source: City of Houston GIS Database,
Harris County Appraisal District

Date: May 24, 2019

This map is made available for reference purposes only and should not be substituted for a survey product. The City of Houston will not accept liability of any kind in conjunction with its use.



**PLANNING &
DEVELOPMENT
DEPARTMENT**



Westwood: Public Facilities

- Super Neighborhood Boundary
- Community Centers
- Fire Station
- Police Station
- School

- Airports
- Harris County Hospitals
- Private Hospitals
- Other Health Facilities
- Library

- Rail Road
- Metro Rail Stations
- Metro Rail Line
- Parks
- TIRZ

Source: City of Houston GIS Database

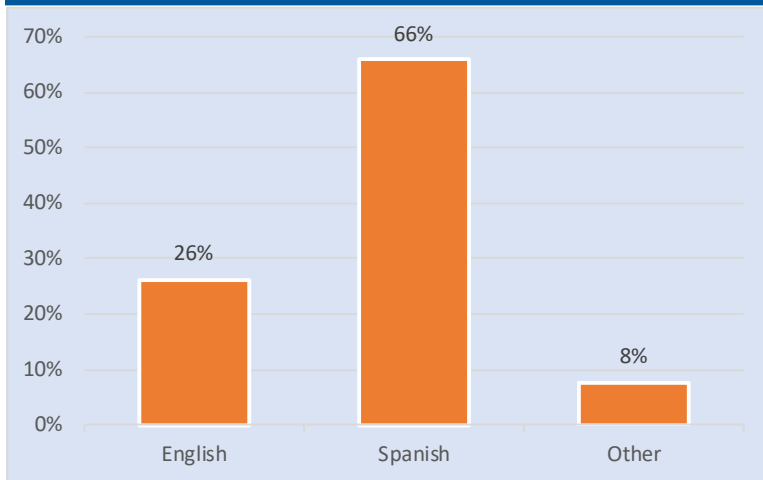
Date: May 2019

This map is made available for reference purposes only and should not be substituted for a survey product. The City of Houston will not accept liability of any kind in conjunction with its use.

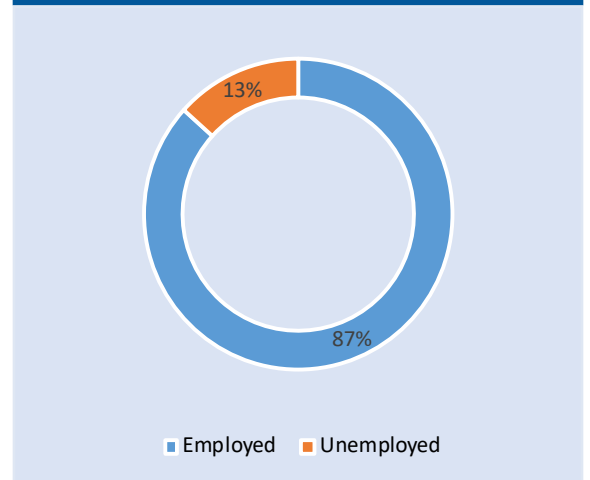


**PLANNING &
DEVELOPMENT
DEPARTMENT**

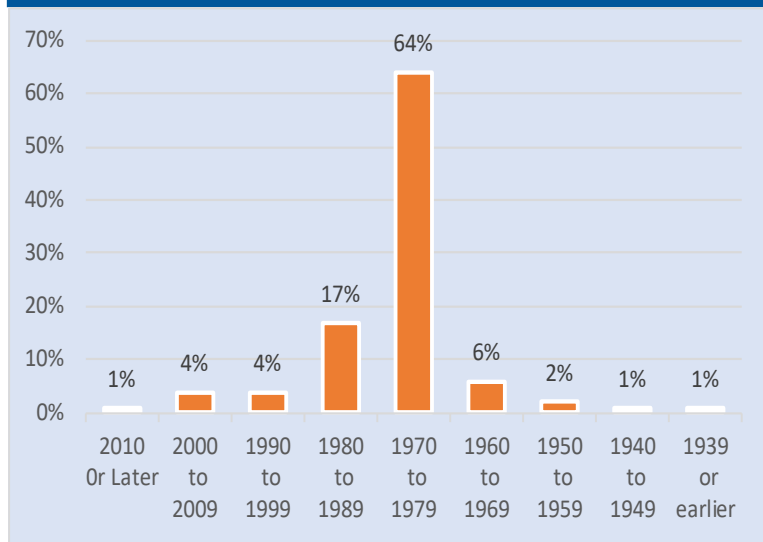
Language Spoken at Home



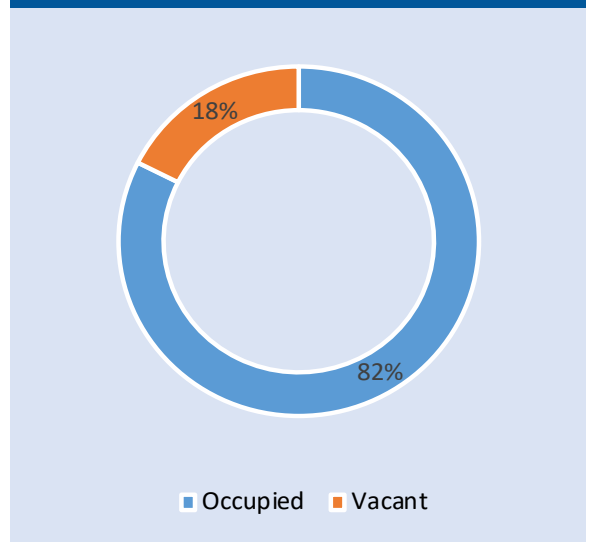
Employment Status



Housing Units by Year Built



Housing Occupancy



Source: U.S. Census Bureau, 2000
American Community Survey, 2013-2017 Estimates



**PLANNING &
DEVELOPMENT
DEPARTMENT**