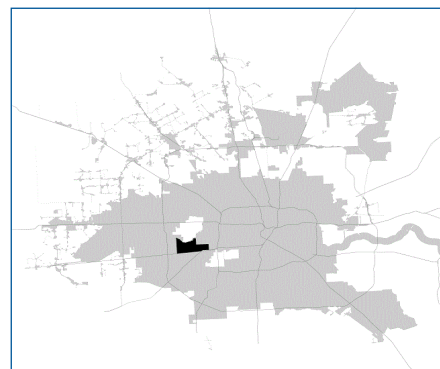


# SUPER

## Neighborhood

### RESOURCE ASSESSMENT



	Super Neighborhood		Houston	
Pop. characteristics	2000	2015	2000	2015
Total population	40,209	50,017	1,953,631	2,217,706
Persons per sq. mile	7,446	9,259	3,166	3,314
<b>Age of Population</b>				
Under 5 years	6%	10%	8%	8%
5- 17 years	9%	11%	19%	17%
18- 64 years	78%	70%	64%	65%
65 and over	7%	8%	9%	10%
<b>Ethnicity</b>				
Non Hispanic Whites	49%	30%	31%	26%
Non Hispanic Blacks	11%	15%	25%	22%
Hispanics	30%	43%	37%	44%
Non Hispanic Asians	7%	11%	6%	7%
Non Hispanic Others	3%	2%	1%	1%
<b>Income</b>				
Under \$25,000	30%	32%	33%	27%
\$25,001 to \$50,000	34%	26%	31%	25%
\$50,001 to \$100,000	26%	25%	24%	26%
Over \$100,001	11%	17%	12%	22%
<b>Median Household Income</b>	\$41,172	\$53,102	\$36,616	\$46,187
<b>Educational Status</b>				
No Diploma	16%	20%	30%	23%
High School Diploma	13%	16%	20%	23%
Some College	26%	26%	23%	24%
Bachelor's or Higher	45%	39%	27%	31%
<b>Housing and Households</b>				
Total housing units	23,650	26,509	782,378	909,336
Occupied	90%	87%	92%	88%
Vacant	10%	13%	8%	12%
Total households	21,308	23,182	717,945	799,714
Family households	7,903	10,493	457,549	491,778
Median Housing Value	\$142,403	\$181,816	\$79,300	\$131,700

### Description

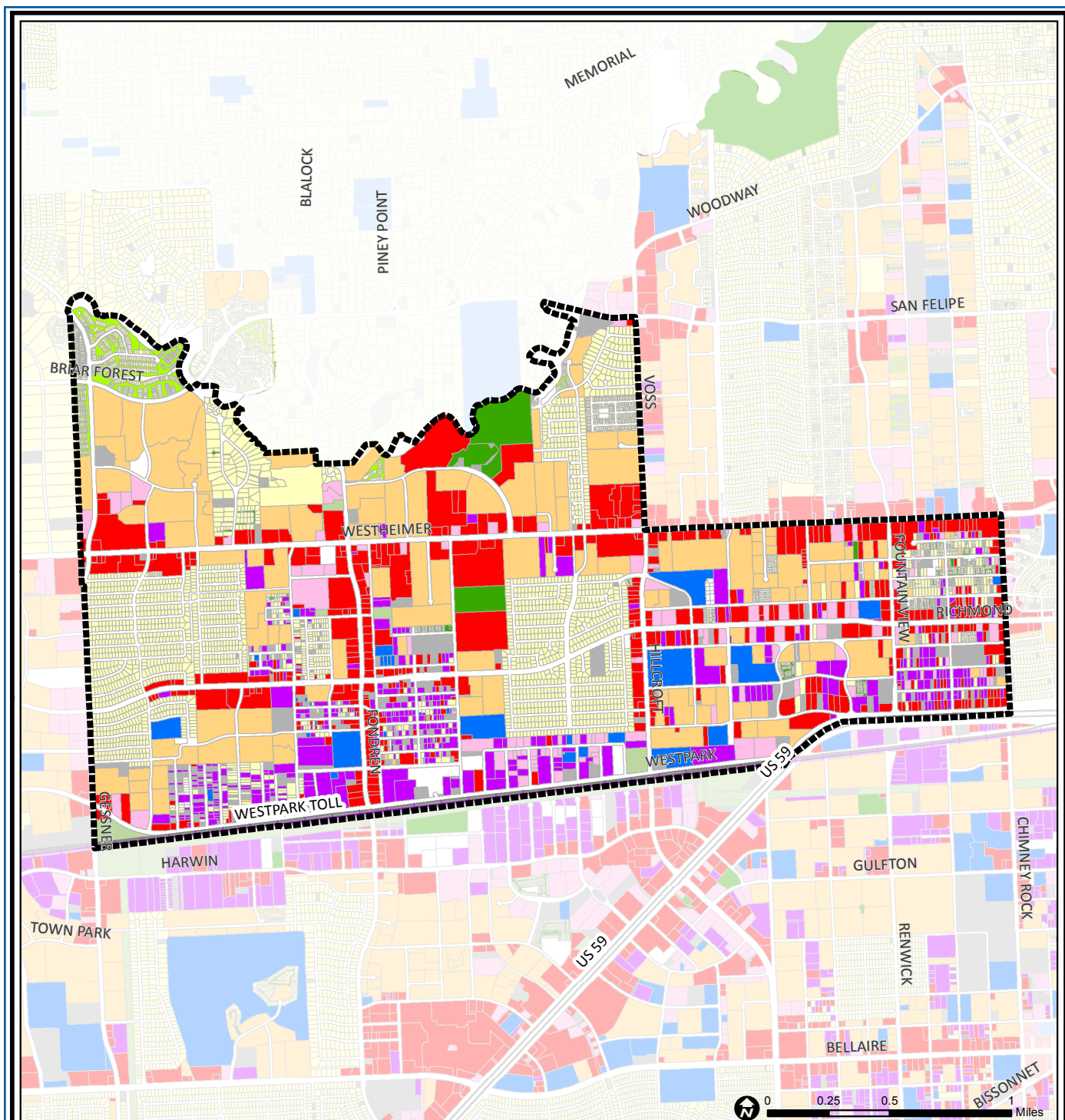
The Mid West super neighborhood is located directly south of Piney Point Village, and is bordered on the south by the Southern Pacific Railroad track. The area contains a mix of single-family, condominiums, apartments, and office/commercial uses. Major commercial activity occurs along Westheimer, Richmond, and Fondren roads. The northwest corner of this neighborhood, known as Woodlake, consists of mixed commercial and high density residential uses. Tanglewilde and Briar Meadow (on both sides of Richmond Avenue) are the largest single-family subdivisions in the area.

### Highlights

- ✓ Houston City Council Districts F, J & G
- ✓ Alief Independent School District
- ✓ Houston Independent School District
- ✓ Spring Branch Independent School District
- ✓ 8 Police beats (includes bordering beats)
- ✓ 3,457 acres (5.40 sq. miles)



**PLANNING &  
DEVELOPMENT  
DEPARTMENT**



## Mid-West: Land Use

	Freeway		Commercial		Parks and Open Space
	Rail Road		Office		Undeveloped
	Super Neighborhood Boundary		Industrial		Agricultural Production
	Single-family Residential		Public and Institutional		Open Water
	Multi-family Residential		Transportation and Utilities		Unknown

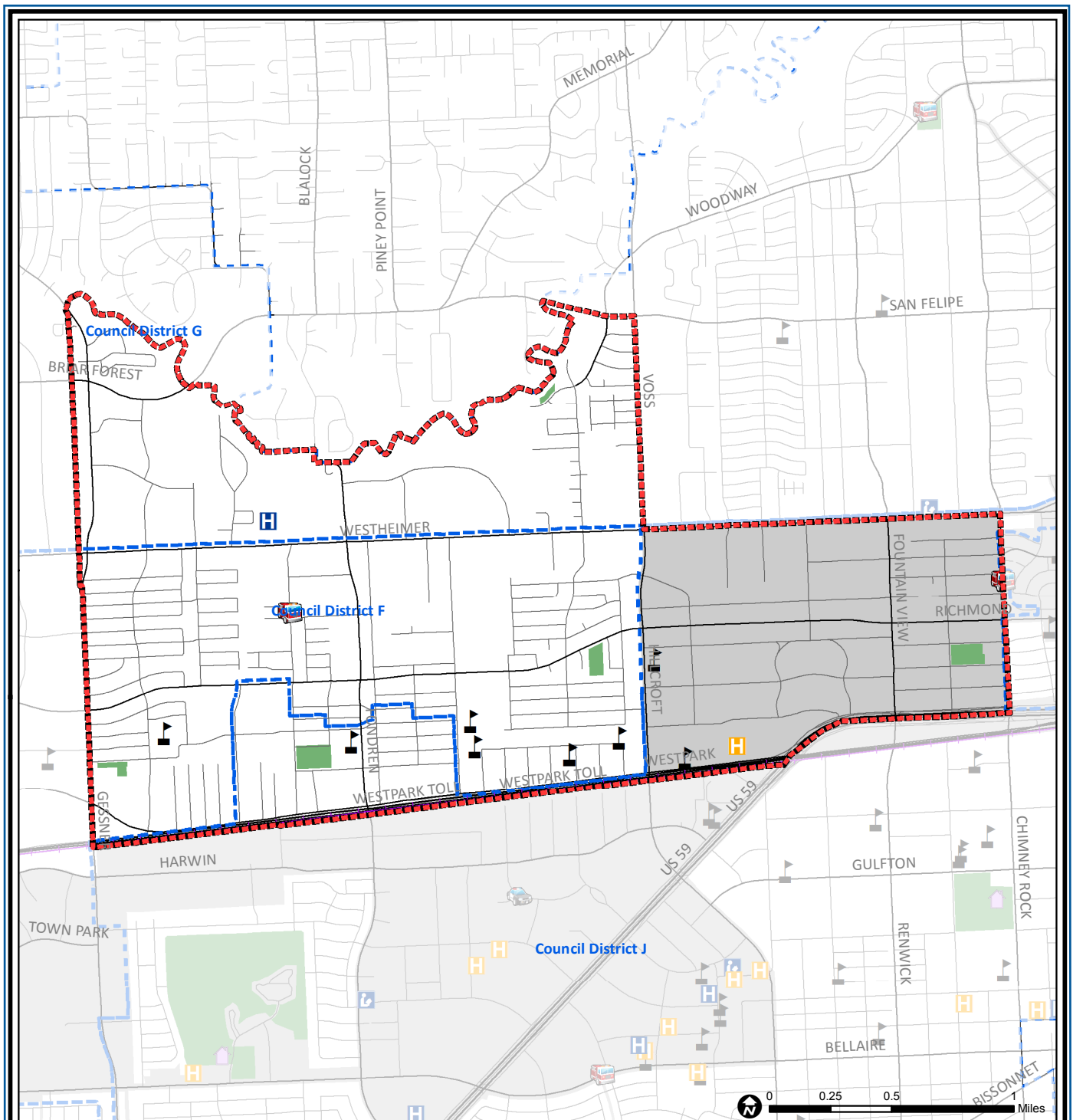
Source: City of Houston GIS Database,  
Harris County Appraisal District

Date: November 16, 2017

This map is made available for reference purposes only and should not be substituted for a survey product. The City of Houston will not accept liability of any kind in conjunction with its use.



**PLANNING &  
DEVELOPMENT  
DEPARTMENT**



## Mid West: Public Facilities

	Super Neighborhood Boundary		Airports		Rail Road
	Community Centers		Harris County Hospitals		Metro Rail Stations
	Fire Station		Private Hospitals		Metro Rail Line
	Police Station		Other Health Facilities		Parks
	School		Library		TIRZ

Source: City of Houston GIS Database

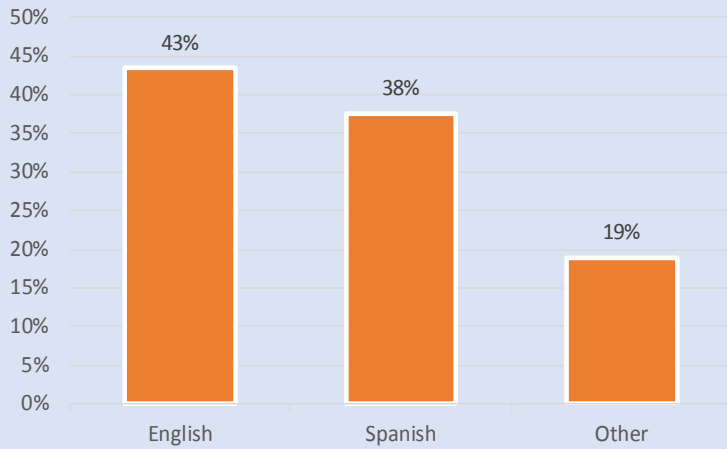
Date: October 2017

This map is made available for reference purposes only and should not be substituted for a survey product. The City of Houston will not accept liability of any kind in conjunction with its use.

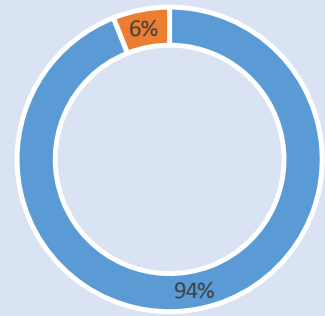


**PLANNING &  
DEVELOPMENT  
DEPARTMENT**

### Language Spoken at Home

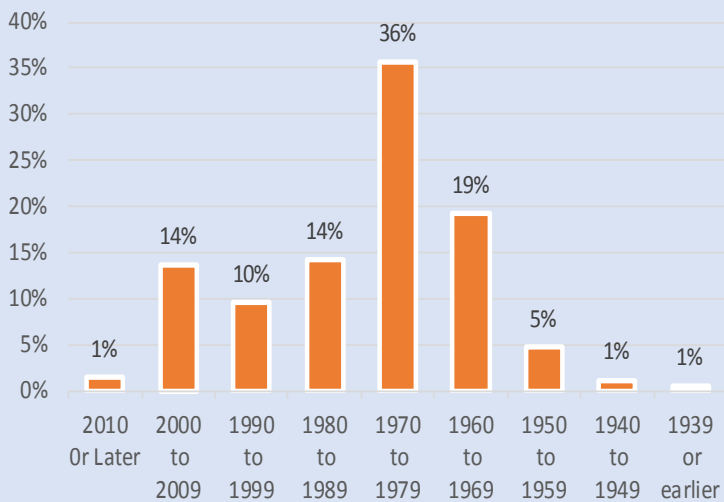


### Employment Status

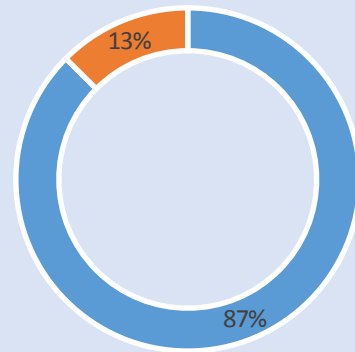


■ Employed ■ Unemployed

### Housing Units by Year Built



### Housing Occupancy



■ Occupied ■ Vacant

Source: U.S. Census Bureau, 2000  
American Community Survey, 2011-2015 Estimates  
\*U.S. Census Bureau Population, 2015



**PLANNING &  
DEVELOPMENT  
DEPARTMENT**