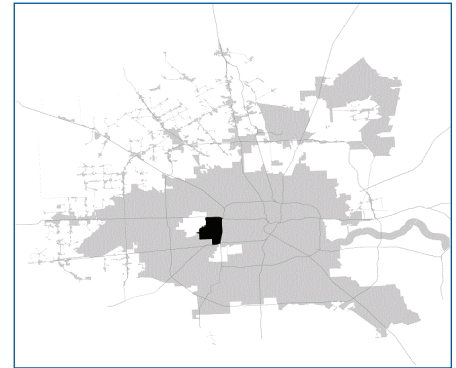


# SUPER

## Neighborhood

### RESOURCE ASSESSMENT



#### Description

Greater Uptown is a large, mixed-use district located at the West Loop and traversed by Buffalo Bayou. It includes an office and retail complex centered on the Galleria which rivals the downtowns of many major cities. It also includes neighborhoods of expensive homes developed after World War II when this area was the city's western edge. The large subdivisions developed in the 1950s have now been almost entirely redeveloped. Apartments, condos, and expensive patio homes have replaced the modest, single-family homes on Augusta, Bering, Potomac and Nantucket.

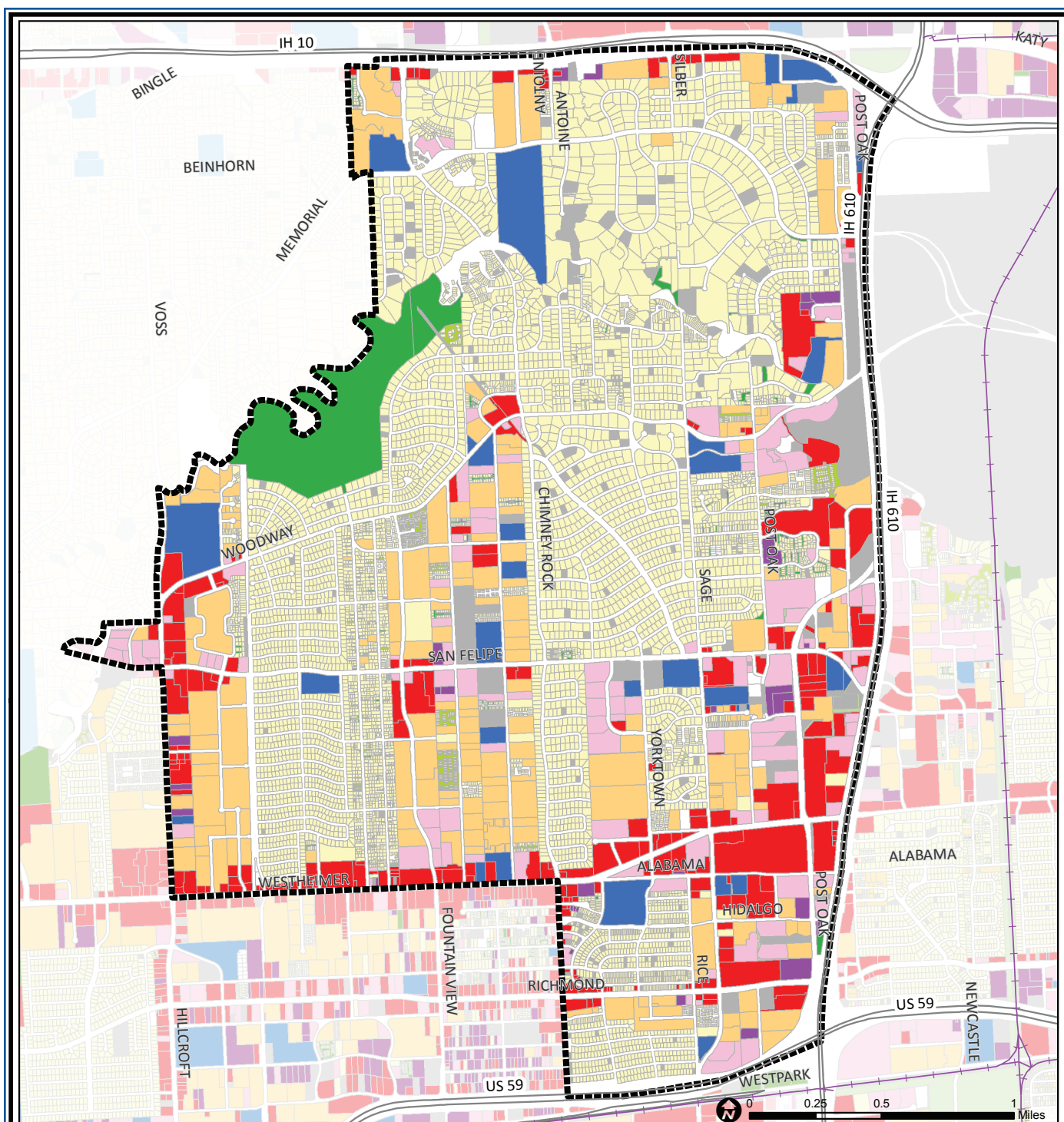
#### Highlights

- ✓ Houston City Council Districts G & J
- ✓ Houston Independent School District
- ✓ Spring Branch Independent School District
- ✓ 5 Police beats (includes bordering beats)
- ✓ 5,274 acres (8.2 sq. miles)



**PLANNING &  
DEVELOPMENT  
DEPARTMENT**

	Super Neighborhood		Houston	
Pop. characteristics	2000	2015	2000	2015
Total population	41,822	50,731	1,953,631	2,217,706
Persons per sq. mile	5,100	6,155	3,166	3,314
<b>Age of Population</b>				
Under 5 years	4%	5%	8%	8%
5- 17 years	8%	9%	19%	17%
18- 64 years	72%	69%	64%	65%
65 and over	15%	17%	9%	10%
<b>Ethnicity</b>				
Non Hispanic Whites	82%	67%	31%	26%
Non Hispanic Blacks	2%	5%	25%	22%
Hispanics	10%	16%	37%	44%
Non Hispanic Asians	5%	10%	6%	7%
Non Hispanic Others	2%	2%	1%	1%
<b>Income</b>				
Under \$25,000	15%	13%	33%	27%
\$25,001 to \$50,000	25%	17%	31%	25%
\$50,001 to \$100,000	30%	30%	24%	26%
Over \$100,001	31%	40%	12%	22%
<b>Median Household Income</b>	<b>\$73,283</b>	<b>\$83,399</b>	<b>\$36,616</b>	<b>\$46,187</b>
<b>Educational Status</b>				
No Diploma	3%	2%	30%	23%
High School Diploma	8%	8%	20%	23%
Some College	24%	20%	23%	24%
Bachelor's or Higher	64%	70%	27%	31%
<b>Housing and Households</b>				
Total housing units	26,708	31,233	782,378	909,336
Occupied	88%	86%	92%	88%
Vacant	12%	14%	8%	12%
Total households	23,604	26,608	717,945	799,714
Family households	9,489	11,496	457,549	491,778
Median Housing Value	\$249,776	\$428,908	\$79,300	\$131,700



## Greater Uptown: Land Use

Freeway	Commercial	Parks and Open Space
Rail Road	Office	Undeveloped
Super Neighborhood Boundary	Industrial	Agricultural Production
Single-family Residential	Public and Institutional	Open Water
Multi-family Residential	Transportation and Utilities	Unknown

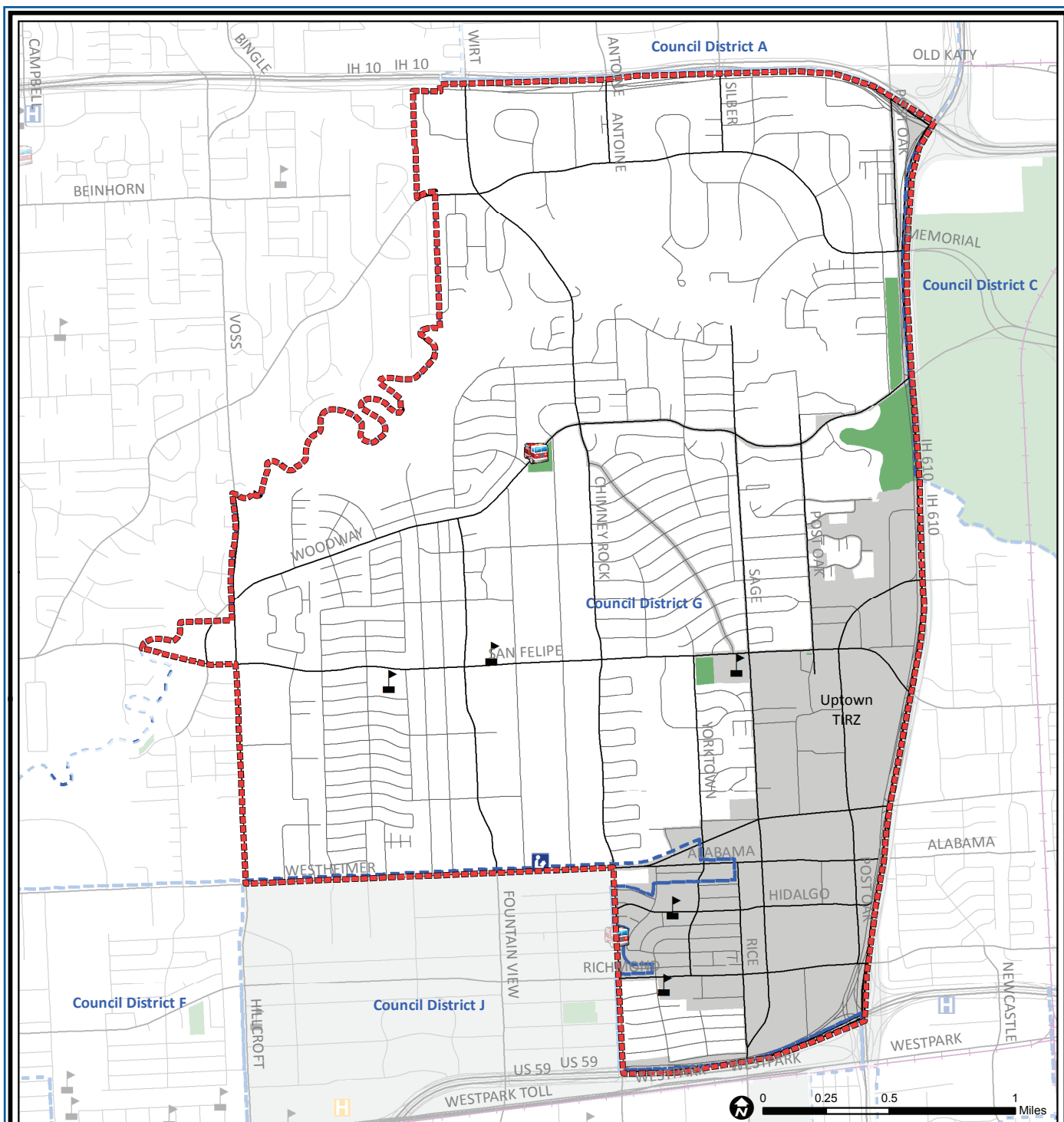
Source: City of Houston GIS Database,  
Harris County Appraisal District

Date: November 13, 2017

This map is made available for reference purposes only and should not be substituted for a survey product. The City of Houston will not accept liability of any kind in conjunction with its use.



**PLANNING &  
DEVELOPMENT  
DEPARTMENT**



## Greater Uptown: Public Facilities

Super Neighborhood Boundary

Community Centers

Fire Station

Police Station

School

Airports

Harris County Hospitals

Private Hospitals

Other Health Facilities

Library

Rail Road

Metro Rail Stations

Metro Rail Line

Parks

TIRZ

Source: City of Houston GIS Database

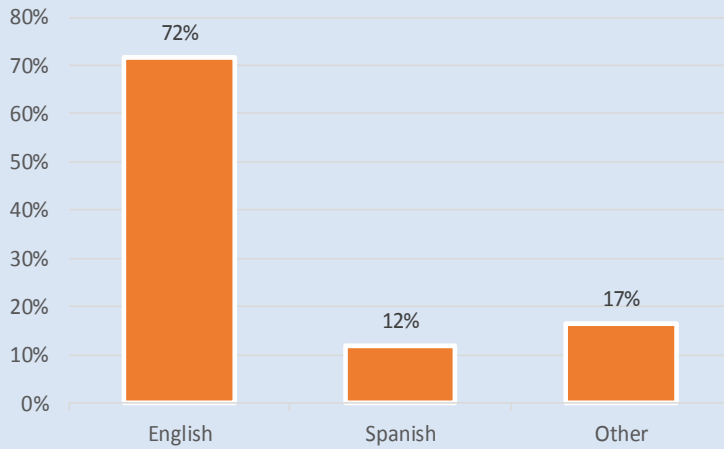
Date: October 2017

This map is made available for reference purposes only and should not be substituted for a survey product. The City of Houston will not accept liability of any kind in conjunction with its use.

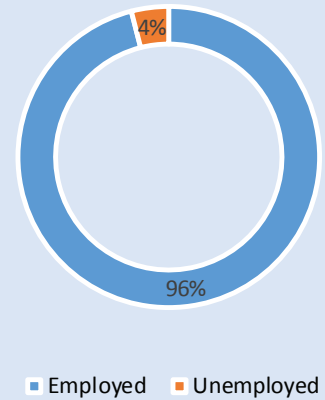


**PLANNING &  
DEVELOPMENT  
DEPARTMENT**

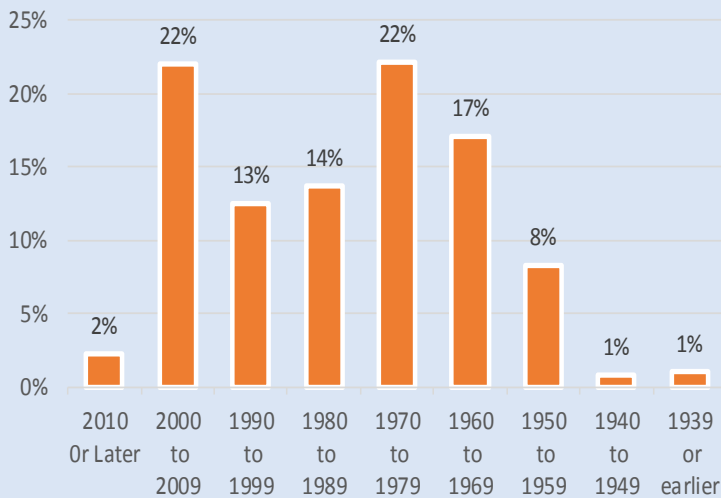
### Language Spoken at Home



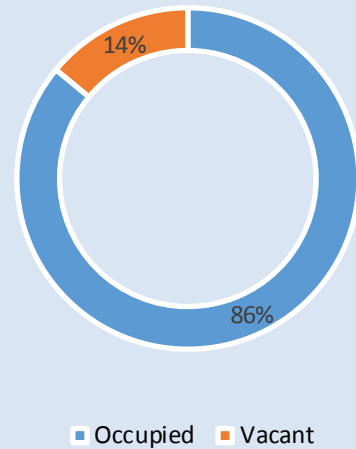
### Employment Status



### Housing Units by Year Built



### Housing Occupancy



Source: U.S. Census Bureau, 2000  
American Community Survey, 2011-2015 Estimates



**PLANNING &  
DEVELOPMENT  
DEPARTMENT**