

SUPER

Neighborhood

RESOURCE ASSESSMENT



	Super Neighborhood		Houston	
Pop. characteristics	2000	2015	2000	2015
Total population	18,552	29,033	1,953,631	2,217,706
Persons per sq. mile	2,337	3,657	3,166	3,314
Age of Population				
Under 5 years	7%	4%	8%	8%
5- 17 years	16%	6%	19%	17%
18- 64 years	69%	83%	64%	65%
65 and over	8%	7%	9%	10%
Ethnicity				
Non Hispanic Whites	34%	60%	31%	26%
Non Hispanic Blacks	8%	5%	25%	22%
Hispanics	56%	24%	37%	44%
Non Hispanic Asians	2%	9%	6%	7%
Non Hispanic Others	1%	3%	1%	1%
Income				
Under \$25,000	34%	11%	33%	27%
\$25,001 to \$50,000	26%	10%	31%	25%
\$50,001 to \$100,000	23%	22%	24%	26%
Over \$100,001	17%	57%	12%	22%
Median Household Income	\$43,892	\$99,302	\$36,616	\$46,187
Educational Status				
No Diploma	39%	7%	30%	23%
High School Diploma	13%	9%	20%	23%
Some College	17%	14%	23%	24%
Bachelor's or Higher	31%	70%	27%	31%
Housing and Households				
Total housing units	8,669	16,426	782,378	909,336
Occupied	85%	91%	92%	88%
Vacant	15%	9%	8%	12%
Total households	7,396	14,992	717,945	799,714
Family households	3,642	6,009	457,549	491,778
Median Housing Value	\$139,959	\$357,245	\$79,300	\$131,700

Description

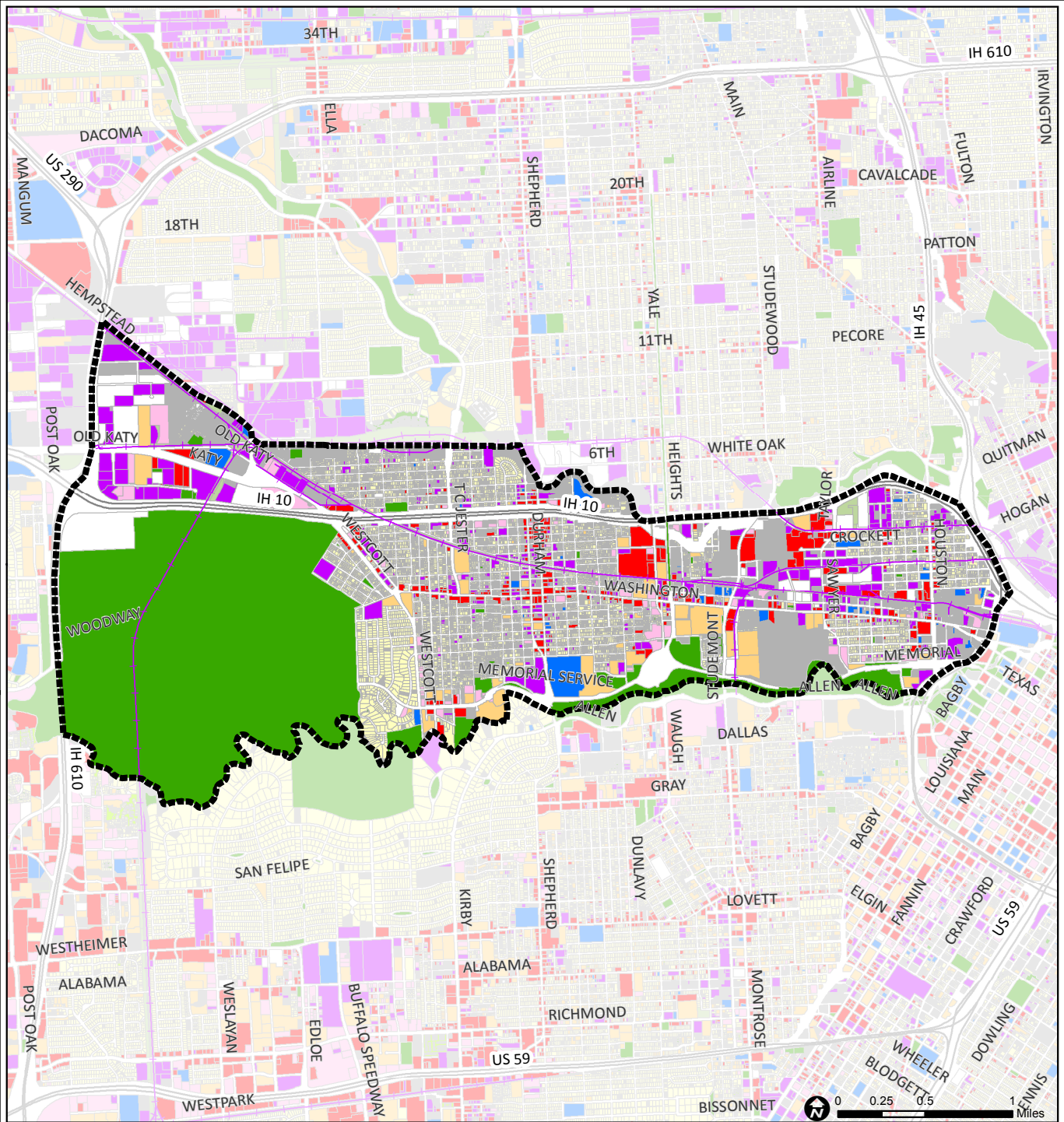
Memorial Park/Washington Avenue is a corridor stretching from the northern edge of downtown on the east to Loop 610 on the west. It includes many of Houston's most historic sites such as Memorial Park, one of the city's primary environmental assets located on the former grounds of Camp Logan, a World War I Army training camp. Residential areas, in the west, adjacent to the park, are rapidly redeveloping with high end single-family homes. The eastern end of the area includes First and Sixth Wards, political geographic units, which date from the 19th Century. Sixth Ward contains the city's best Victorian era buildings. Interstate 10 creates a barrier on the northern boundary.

Highlights

- ✓ Houston City Council Districts C & H
- ✓ Houston Independent School District
- ✓ 14 Police beats (includes bordering beats)
- ✓ 5,081 acres (7.94 sq. miles)



**PLANNING &
DEVELOPMENT
DEPARTMENT**



Washington Avenue Coalition / Memorial Park: Land Use

	Freeway		Commercial		Parks and Open Space
	Rail Road		Office		Undeveloped
	Super Neighborhood Boundary		Industrial		Agricultural Production
	Single-family Residential		Public and Institutional		Open Water
	Multi-family Residential		Transportation and Utilities		Unknown

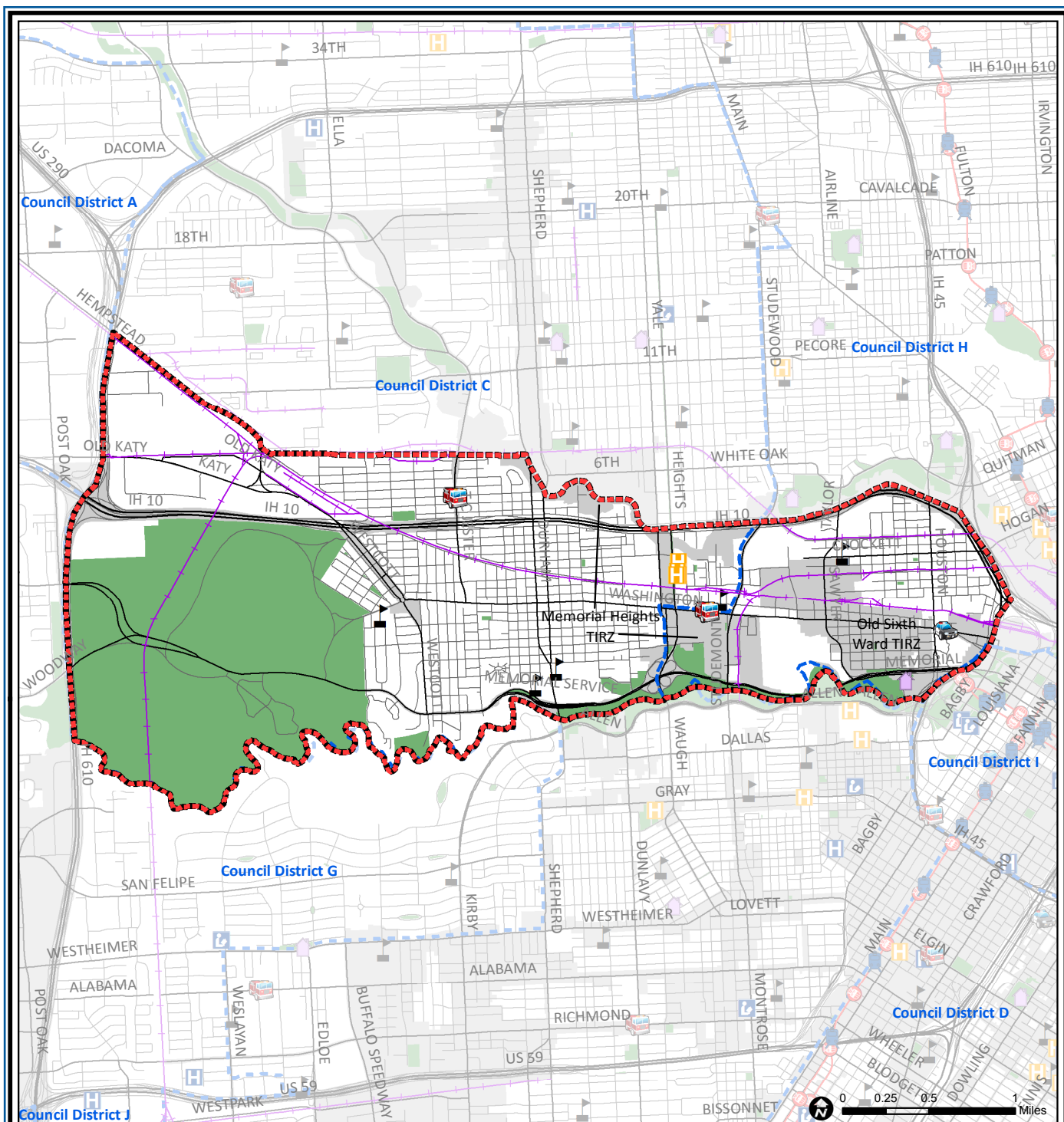
Source: City of Houston GIS Database,
Harris County Appraisal District

Date: November 16, 2017

This map is made available for reference purposes only and should not be substituted for a survey product. The City of Houston will not accept liability of any kind in conjunction with its use.



**PLANNING &
DEVELOPMENT
DEPARTMENT**



Washington Ave. Coalition/Memorial Park: Public Facilities

Source: City of Houston GIS Database

Date: December, 2017

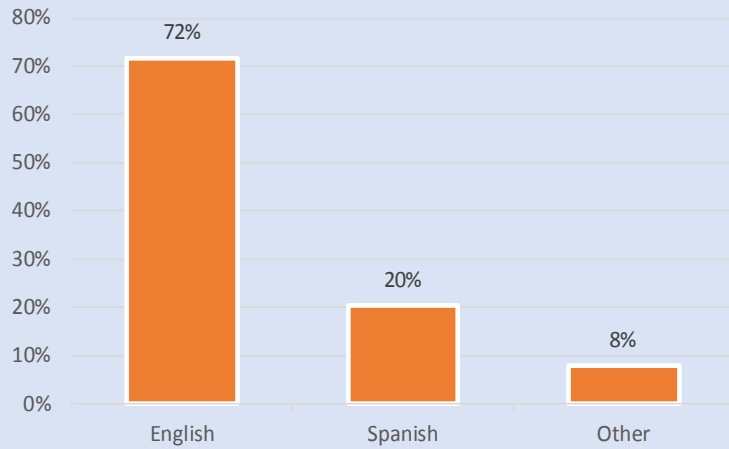
	Super Neighborhood Boundary		Airports		Rail Road
	Community Centers		Harris County Hospitals		Metro Rail Stations
	Fire Station		Private Hospitals		Metro Rail Line
	Police Station		Other Health Facilities		Parks
	School		Library		TIRZ

This map is made available for reference purposes only and should not be substituted for a survey product. The City of Houston will not accept liability of any kind in conjunction with its use.

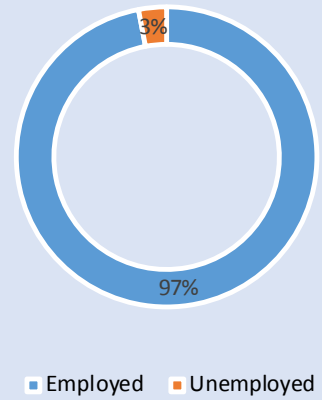


**PLANNING &
DEVELOPMENT
DEPARTMENT**

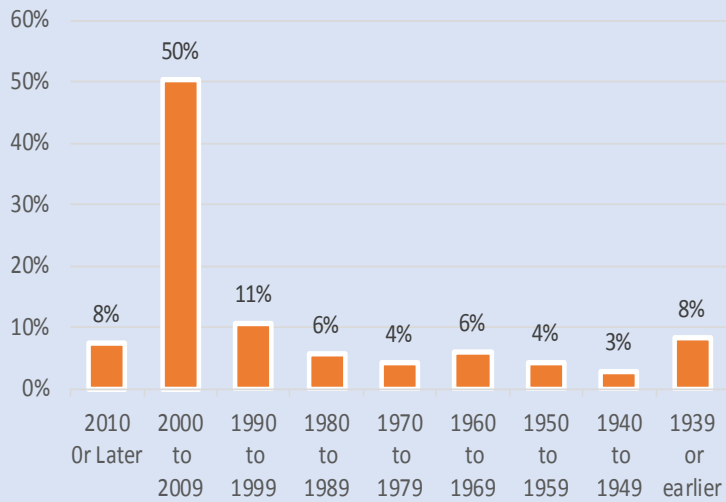
Language Spoken at Home



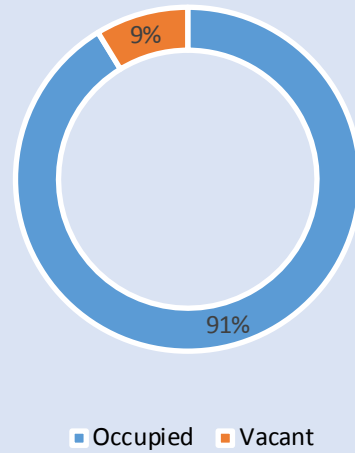
Employment Status



Housing Units by Year Built



Housing Occupancy



Source: U.S. Census Bureau, 2000
American Community Survey, 2011-2015 Estimates



**PLANNING &
DEVELOPMENT
DEPARTMENT**