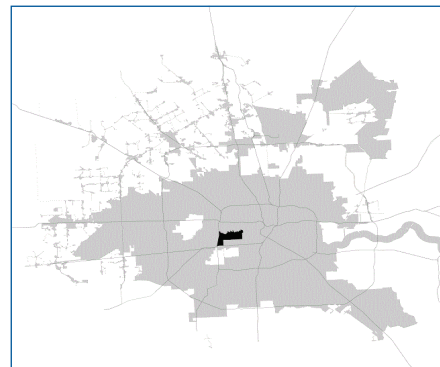


# SUPER

## Neighborhood

### RESOURCE ASSESSMENT



#### Pop. characteristics

	2000	2015	2000	2015
Total population	41,820	14,518	1,953,631	2,217,706
Persons per sq. mile	11,617	4,021	3,166	3,314

#### Age of Population

Under 5 years	4%	5%	8%	8%
5- 17 years	11%	14%	19%	17%
18- 64 years	70%	61%	64%	65%
65 and over	14%	20%	9%	10%

#### Ethnicity

Non Hispanic Whites	86%	77%	31%	26%
Non Hispanic Blacks	2%	4%	25%	22%
Hispanics	8%	10%	37%	44%
Non Hispanic Asians	3%	7%	6%	7%
Non Hispanic Others	1%	2%	1%	1%

#### Income

Under \$25,000	11%	9%	33%	27%
\$25,001 to \$50,000	21%	10%	31%	25%
\$50,001 to \$100,000	25%	23%	24%	26%
Over \$100,001	42%	58%	12%	22%

<b>Median Household Income</b>	\$97,170	\$95,682	\$36,616	\$46,187
--------------------------------	----------	----------	----------	----------

#### Educational Status

No Diploma	3%	3%	30%	23%
High School Diploma	5%	4%	20%	23%
Some College	20%	19%	23%	24%
Bachelor's or Higher	72%	74%	27%	31%

#### Housing and Households

Total housing units	8,169	7,848	782,378	909,336
Occupied	91%	88%	92%	88%
Vacant	9%	12%	8%	12%
Total households	7,401	6,896	717,945	799,714
Family households	3,518	3,777	457,549	491,778
Median Housing Value	\$458,198	\$499,169	\$79,300	\$131,700

#### Description

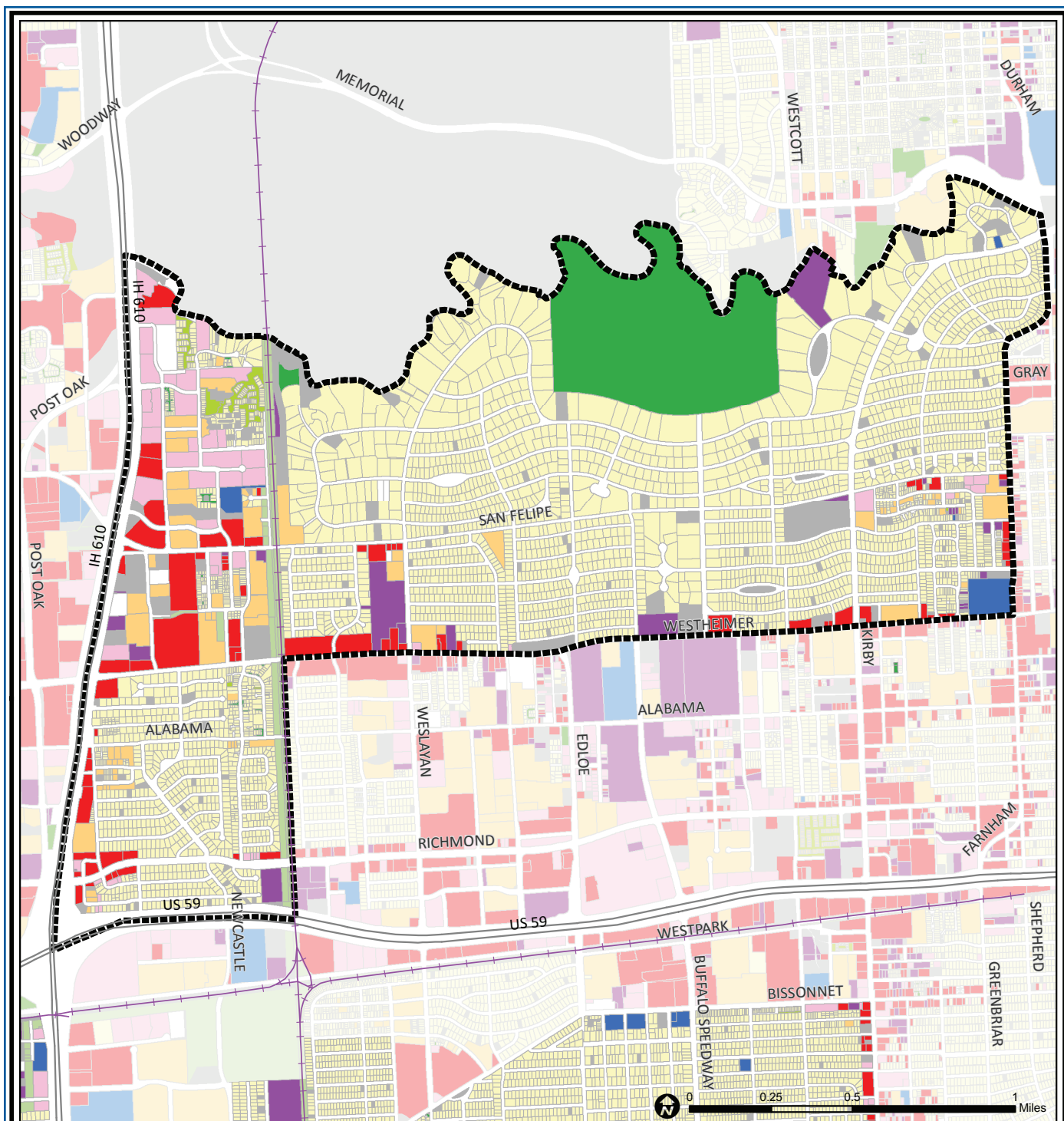
The Afton Oaks / River Oaks area includes two of Houston's most prestigious upper-income neighborhoods. River Oaks began in the 1920s, and it quickly became Houston's most affluent development of residential area and remains so today. Afton Oaks was developed in the suburban boom after World War II. Many of Afton Oaks' original ranch-style homes are now being extensively renovated or are being replaced with much larger homes. Afton Oaks and River Oaks are conveniently located between Downtown and the Uptown/Galleria area. The area also includes Post Oak Park, a mixed use development in the northwest portion of the neighborhood. Post Oak Park was one of the first fashionable apartment districts developed along Mid Lane in the 1960s. Garden apartments have replaced luxury homes and townhouses as area land prices rise.

#### Highlights

- ✓ Houston City Council Districts G & C
- ✓ Houston Independent School District
- ✓ 6 Police beats (includes bordering beats)
- ✓ 2,311 acres (3.61 sq. miles)



**PLANNING &  
DEVELOPMENT  
DEPARTMENT**



## Afton Oaks/River Oaks: Land Use

	Freeway		Commercial		Parks and Open Space
	Rail Road		Office		Undeveloped
	Super Neighborhood Boundary		Industrial		Agricultural Production
	Single-family Residential		Public and Institutional		Open Water
	Multi-family Residential		Transportation and Utilities		Unknown

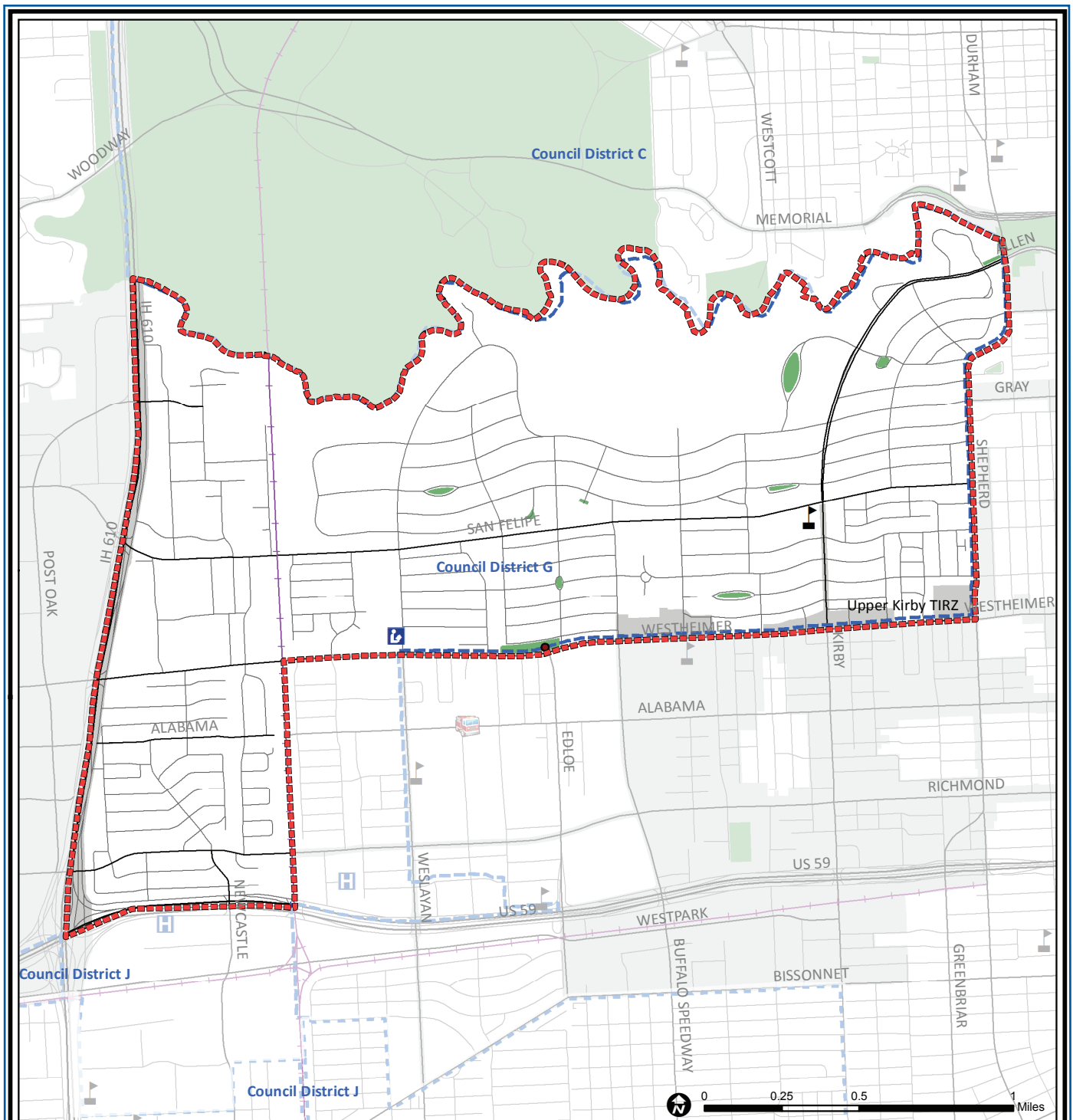
Source: City of Houston GIS Database,  
Harris County Appraisal District

Date: November 15, 2017

This map is made available for reference purposes only and should not be substituted for a survey product. The City of Houston will not accept liability of any kind in conjunction with its use.



**PLANNING &  
DEVELOPMENT  
DEPARTMENT**



## Afton Oaks / River Oaks Area: Public Facilities

Source: City of Houston GIS Database

Date: October 2017

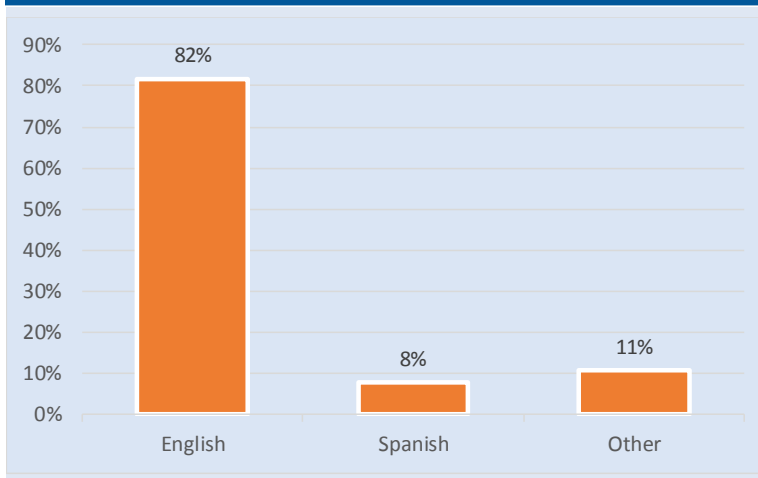
This map is made available for reference purposes only and should not be substituted for a survey product. The City of Houston will not accept liability of any kind in conjunction with its use.

- |                             |                         |                     |
|-----------------------------|-------------------------|---------------------|
| Super Neighborhood Boundary | Airports                | Rail Road           |
| Community Centers           | Harris County Hospitals | Metro Rail Stations |
| Fire Station                | Private Hospitals       | Metro Rail Line     |
| Police Station              | Other Health Facilities | Parks               |
| School                      | Library                 | TIRZ                |

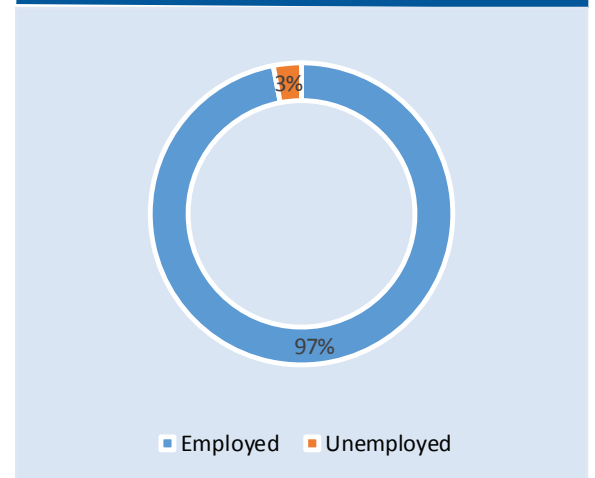


**PLANNING &  
DEVELOPMENT  
DEPARTMENT**

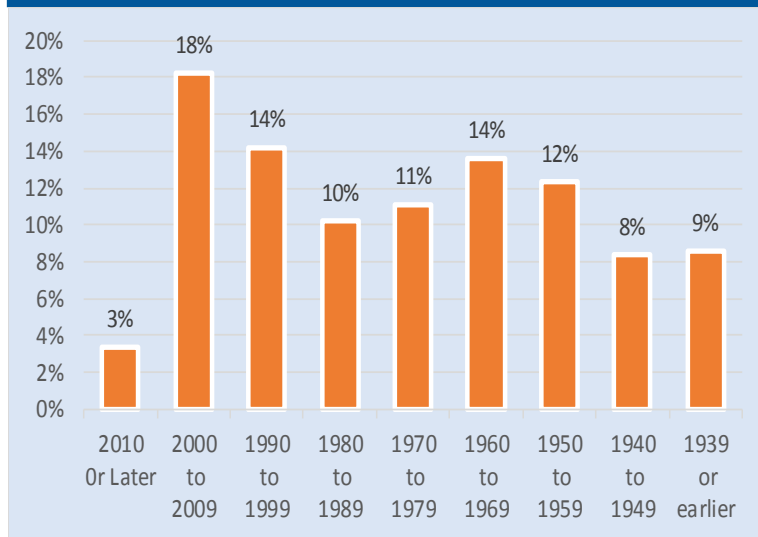
### Language Spoken at Home



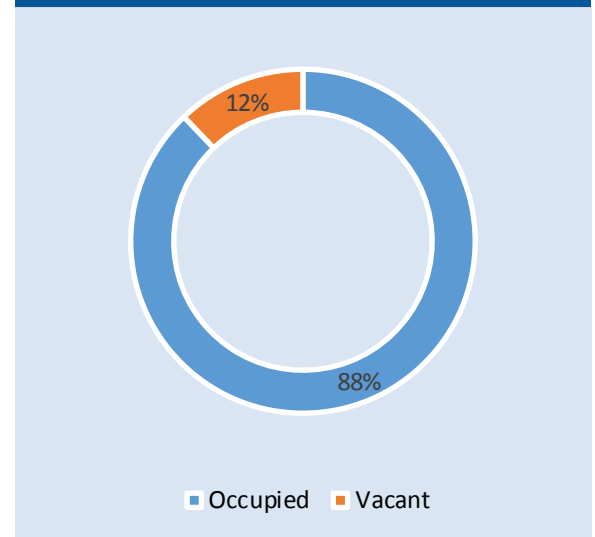
### Employment Status



### Housing Units by Year Built



### Housing Occupancy



Source: U.S. Census Bureau, 2000  
American Community Survey, 2011-2015 Estimates



**PLANNING &  
DEVELOPMENT  
DEPARTMENT**