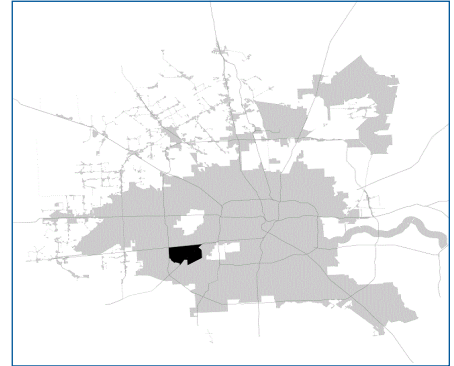


SUPER

Neighborhood

RESOURCE ASSESSMENT



	Super Neighborhood		Houston	
Pop. characteristics	2000	2015	2000	2015
Total population	77,085	77,220	1,953,631	2,217,706
Persons per sq. mile	9,026	9,045	3,166	3,314
Age of Population				
Under 5 years	10%	9%	8%	8%
5- 17 years	17%	19%	19%	17%
18- 64 years	65%	63%	64%	65%
65 and over	8%	9%	9%	10%
Ethnicity				
Non Hispanic Whites	20%	12%	31%	26%
Non Hispanic Blacks	17%	13%	25%	22%
Hispanics	46%	58%	37%	44%
Non Hispanic Asians	16%	15%	6%	7%
Non Hispanic Others	2%	2%	1%	1%
Income				
Under \$25,000	41%	41%	33%	27%
\$25,001 to \$50,000	34%	32%	31%	25%
\$50,001 to \$100,000	19%	19%	24%	26%
Over \$100,001	6%	8%	12%	22%
Median Household Income	\$31,377	\$33,086	\$36,616	\$46,187
Educational Status				
No Diploma	34%	36%	30%	23%
High School Diploma	20%	25%	20%	23%
Some College	23%	21%	23%	24%
Bachelor's or Higher	23%	17%	27%	31%
Housing and Households				
Total housing units	29,503	29,917	782,378	909,336
Occupied	94%	87%	92%	88%
Vacant	6%	13%	8%	12%
Total households	27,802	26,044	717,945	799,714
Family households	18,226	17,112	457,549	491,778
Median Housing Value	\$63,388	\$67,412	\$79,300	\$131,700

Description

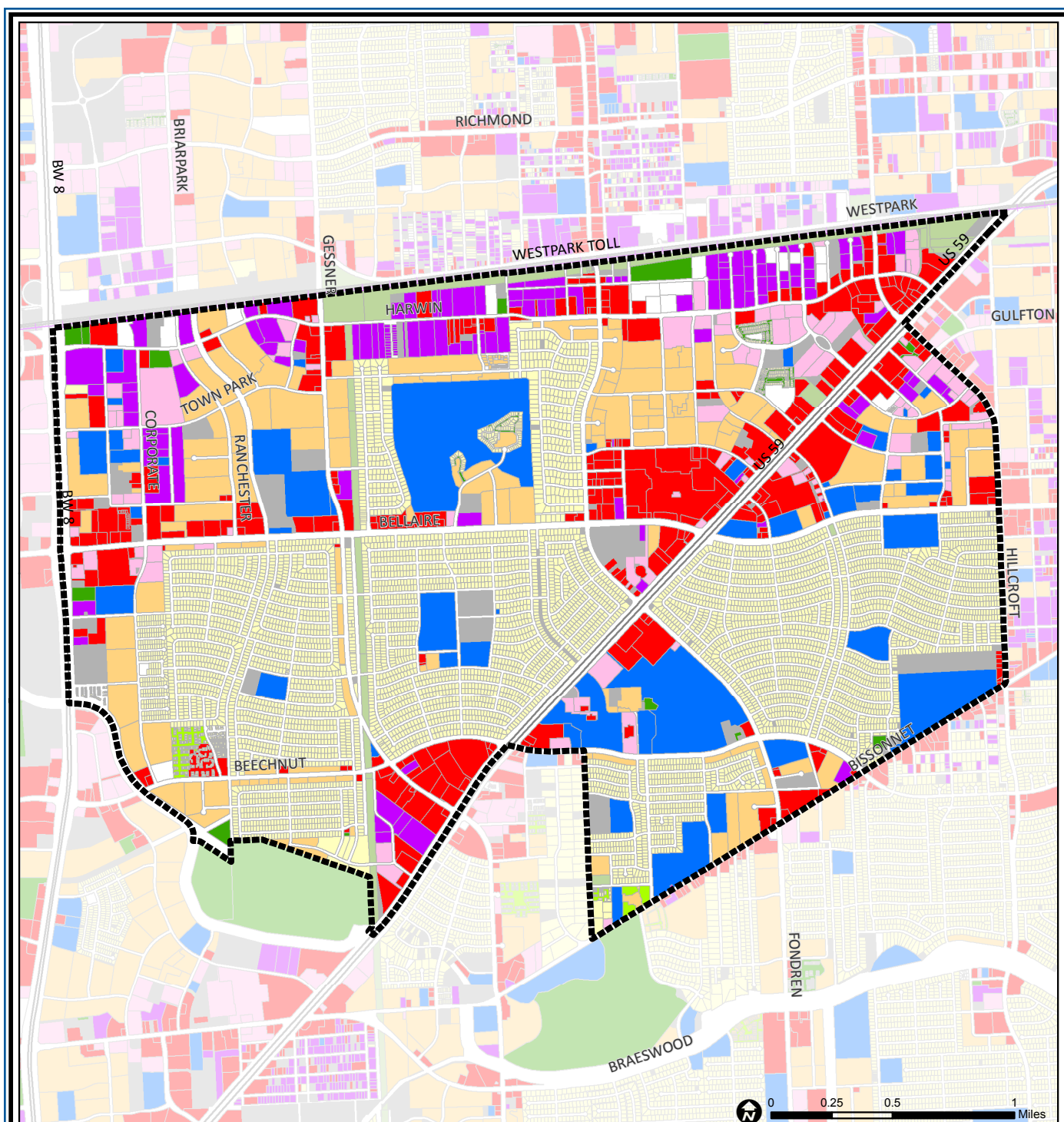
Sharpstown was Houston's largest development when it was undertaken in the mid-1950s. A prototype for the master planned communities of today, its pattern of middle class homes on curving streets and cul-de-sacs surrounding a shopping mall and country club was widely imitated. In recent years, Asian merchants have moved into empty shopping centers along Bellaire Boulevard and their groceries, restaurants and small shops now thrive. Demand in these areas is strong, resulting in the conversion of warehouses and apartments to meet the demand for retail space.

Highlights

- ✓ Houston City Council Districts J & F
- ✓ Alief Independent School District
- ✓ Houston Independent School District
- ✓ 6 Police beats (includes bordering beats)
- ✓ 5,464 acres (8.54 sq. miles)



**PLANNING &
DEVELOPMENT
DEPARTMENT**



Sharpstown: Land Use

Freeway	Commercial	Parks and Open Space
Rail Road	Office	Undeveloped
Super Neighborhood Boundary	Industrial	Agricultural Production
Single-family Residential	Public and Institutional	Open Water
Multi-family Residential	Transportation and Utilities	Unknown

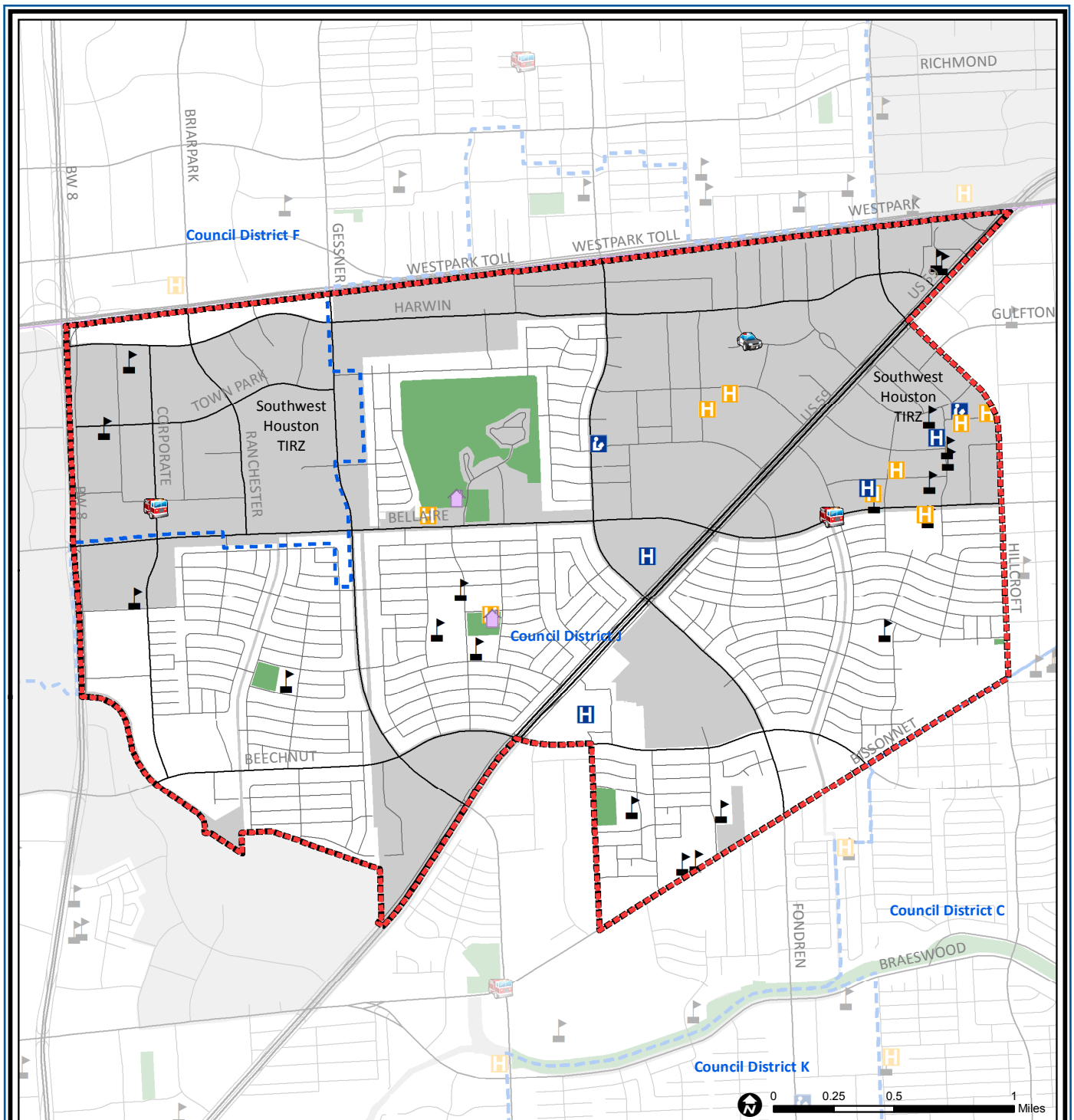
Source: City of Houston GIS Database,
Harris County Appraisal District

Date: November 16, 2017

This map is made available for reference purposes only and should not be substituted for a survey product. The City of Houston will not accept liability of any kind in conjunction with its use.



**PLANNING &
DEVELOPMENT
DEPARTMENT**



Sharpstown: Public Facilities

	Super Neighborhood Boundary		Airports		Rail Road
	Community Centers		Harris County Hospitals		Metro Rail Stations
	Fire Station		Private Hospitals		Metro Rail Line
	Police Station		Other Health Facilities		Parks
	School		Library		TIRZ

Source: City of Houston GIS Database

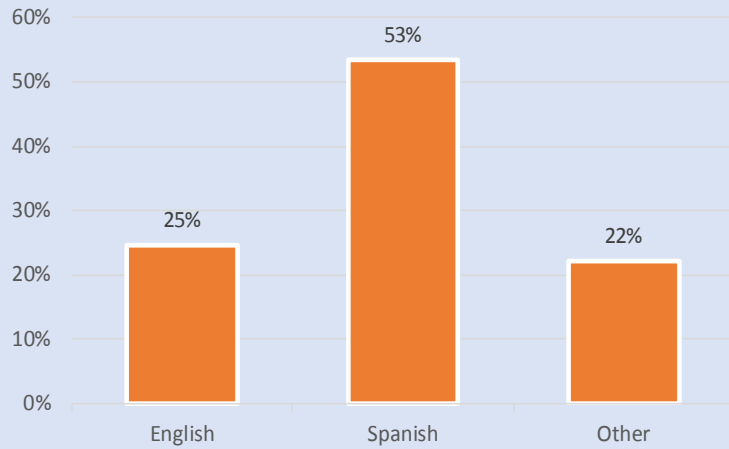
Date: October 2017

This map is made available for reference purposes only and should not be substituted for a survey product. The City of Houston will not accept liability of any kind in conjunction with its use.

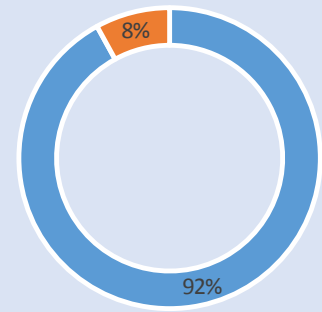


PLANNING & DEVELOPMENT DEPARTMENT

Language Spoken at Home

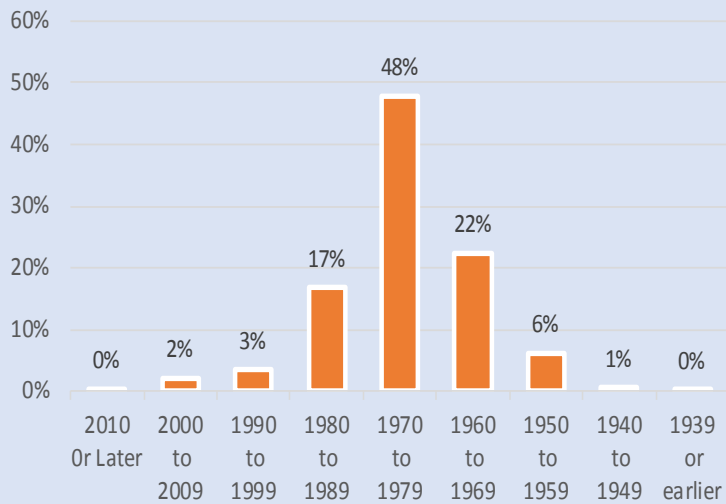


Employment Status

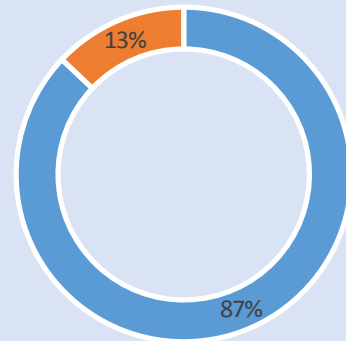


■ Employed ■ Unemployed

Housing Units by Year Built



Housing Occupancy



■ Occupied ■ Vacant

Source: U.S. Census Bureau, 2000
American Community Survey, 2011-2015 Estimates



**PLANNING &
DEVELOPMENT
DEPARTMENT**