

# SUPER

## Neighborhood

### RESOURCE ASSESSMENT



	Super Neighborhood		Houston	
Pop. characteristics	2000	2015	2000	2015
Total population	14,050	16,342	1,953,631	2,217,706
Persons per sq. mile	5,091	5,912	3,166	3,314
<b>Age of Population</b>				
Under 5 years	5%	5%	8%	8%
5- 17 years	11%	11%	19%	17%
18- 64 years	75%	74%	64%	65%
65 and over	9%	10%	9%	10%
<b>Ethnicity</b>				
Non Hispanic Whites	84%	68%	31%	26%
Non Hispanic Blacks	2%	6%	25%	22%
Hispanics	7%	9%	37%	44%
Non Hispanic Asians	6%	15%	6%	7%
Non Hispanic Others	2%	3%	1%	1%
<b>Income</b>				
Under \$25,000	18%	12%	33%	27%
\$25,001 to \$50,000	17%	14%	31%	25%
\$50,001 to \$100,000	22%	17%	24%	26%
Over \$100,001	43%	57%	12%	22%
<b>Median Household Income</b>	\$80,776	\$111,510	\$36,616	\$46,187
<b>Educational Status</b>				
No Diploma	2%	1%	30%	23%
High School Diploma	4%	3%	20%	23%
Some College	15%	12%	23%	24%
Bachelor's or Higher	78%	84%	27%	31%
<b>Housing and Households</b>				
Total housing units	6,997	7,306	782,378	909,336
Occupied	93%	85%	92%	88%
Vacant	7%	15%	8%	12%
Total households	6,538	6,180	717,945	799,714
Family households	3,155	3,209	457,549	491,778
Median Housing Value	\$314,322	\$494,802	\$79,300	\$131,700

### Description

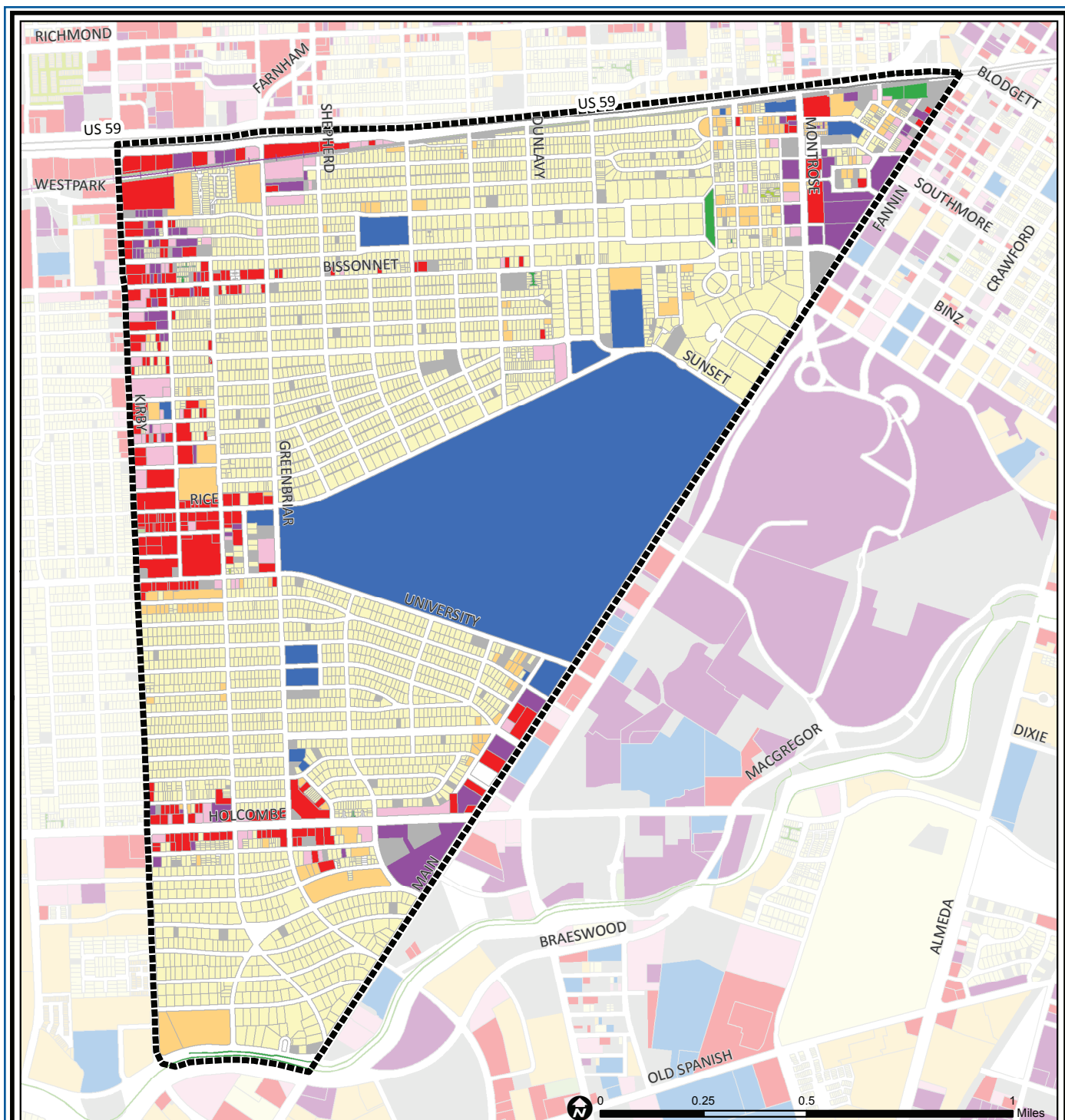
University Place is a group of neighborhoods surrounding Rice University. The better known neighborhoods, Southhampton, Southgate, Old Braeswood and Boulevard Oaks, are deed restricted and expensive. Old Braeswood in the south and Boulevard Oaks in the north, include some of the city's finest homes, especially along the live oak esplanades of Sunset, North and South Boulevards. Proximity to the Texas Medical Center has led to intense redevelopment along Holcombe and Main, and on the site of the old Shamrock Hilton hotel. The Village shopping district and the blocks adjacent to Montrose Boulevard have a mix of uses with considerable redevelopment underway.

### Highlights

- ✓ Houston City Council Districts C & D
- ✓ Houston Independent School District
- ✓ 8 Police beats (includes bordering beats)
- ✓ 1,769 acres (2.76 sq. miles)



**PLANNING &  
DEVELOPMENT  
DEPARTMENT**



## University Place: Land Use

	Freeway		Commercial		Parks and Open Space
	Rail Road		Office		Undeveloped
	Super Neighborhood Boundary		Industrial		Agricultural Production
	Single-family Residential		Public and Institutional		Open Water
	Multi-family Residential		Transportation and Utilities		Unknown

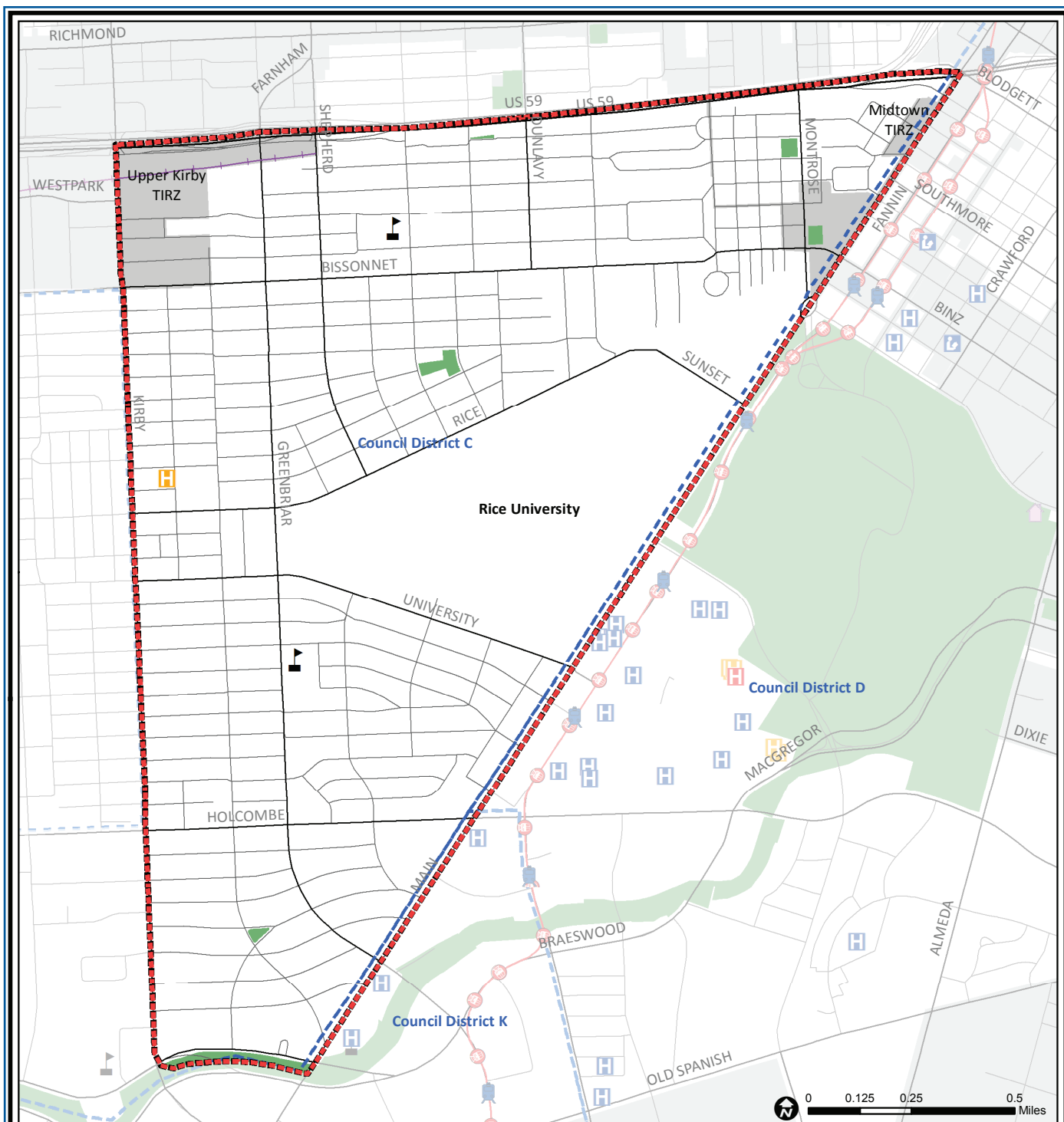
Source: City of Houston GIS Database,  
Harris County Appraisal District

Date: November 16, 2017

This map is made available for reference purposes only and should not be substituted for a survey product. The City of Houston will not accept liability of any kind in conjunction with its use.



**PLANNING &  
DEVELOPMENT  
DEPARTMENT**



## University Place: Public Facilities

Super Neighborhood Boundary

Community Centers

Fire Station

Police Station

School

Airports

Harris County Hospitals

Private Hospitals

Other Health Facilities

Library

Rail Road

Metro Rail Stations

Metro Rail Line

Parks

TIRZ

Source: City of Houston GIS Database

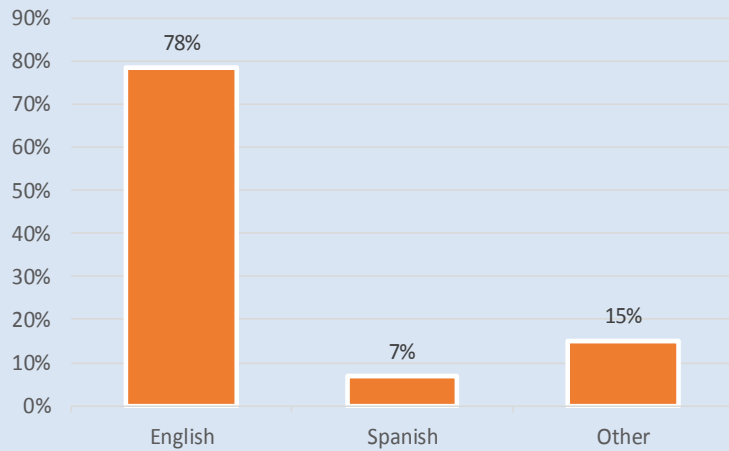
Date: October 2017

This map is made available for reference purposes only and should not be substituted for a survey product. The City of Houston will not accept liability of any kind in conjunction with its use.

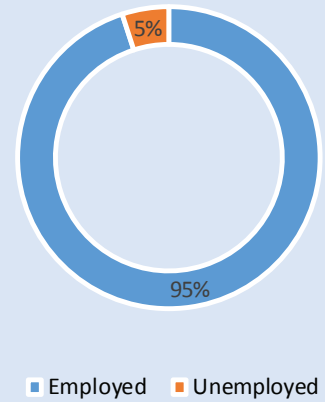


**PLANNING &  
DEVELOPMENT  
DEPARTMENT**

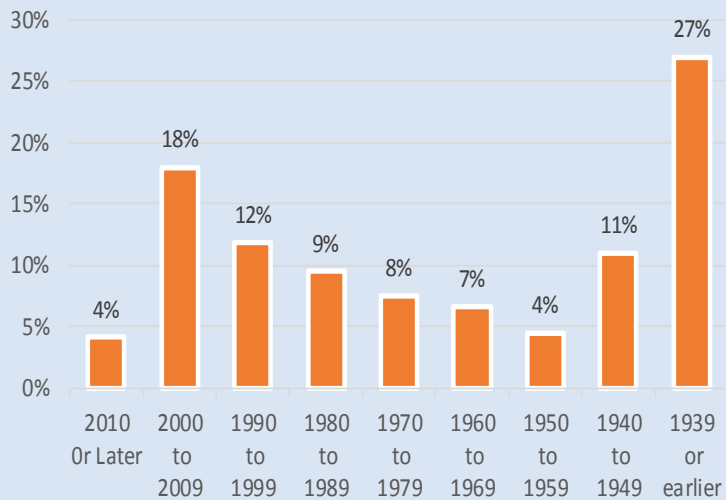
### Language Spoken at Home



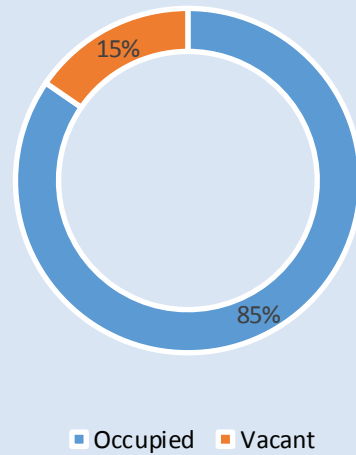
### Employment Status



### Housing Units by Year Built



### Housing Occupancy



Source: U.S. Census Bureau, 2000  
American Community Survey, 2011-2015 Estimates



**PLANNING &  
DEVELOPMENT  
DEPARTMENT**