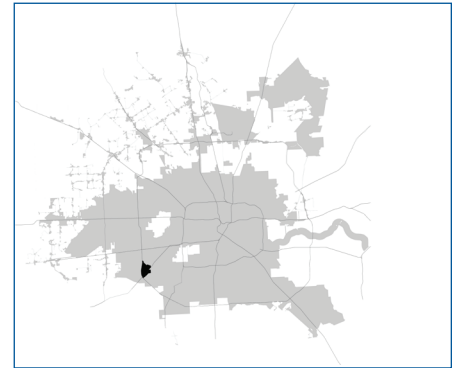


SUPER

Neighborhood

RESOURCE ASSESSMENT



	Super Neighborhood		Houston	
Pop. characteristics	2000	2015	2000	2015
Total population	19,488	19,530	1,953,631	2,217,706
Persons per sq. mile	10,097	8,951	3,166	3,314
Age of Population				
Under 5 years	13%	13%	8%	8%
5- 17 years	19%	24%	19%	17%
18- 64 years	66%	61%	64%	65%
65 and over	2%	3%	9%	10%
Ethnicity				
Non Hispanic Whites	7%	2%	31%	26%
Non Hispanic Blacks	42%	23%	25%	22%
Hispanics	44%	68%	37%	44%
Non Hispanic Asians	6%	5%	6%	7%
Non Hispanic Others	2%	1%	1%	1%
Income				
Under \$25,000	52%	56%	33%	27%
\$25,001 to \$50,000	36%	29%	31%	25%
\$50,001 to \$100,000	11%	13%	24%	26%
Over \$100,001	1%	1%	12%	22%
Median Household Income	\$23,838	\$29,527	\$36,616	\$46,187
Educational Status				
No Diploma	40%	43%	30%	23%
High School Diploma	21%	30%	20%	23%
Some College	26%	18%	23%	24%
Bachelor's or Higher	14%	10%	27%	31%
Housing and Households				
Total housing units	8,179	9,356	782,378	909,336
Occupied	91%	71%	92%	88%
Vacant	9%	29%	8%	12%
Total households	7,428	6,661	717,945	799,714
Family households	4,445	3,905	457,549	491,778
Median Housing Value	\$63,579	\$37,690	\$79,300	\$131,700

Description

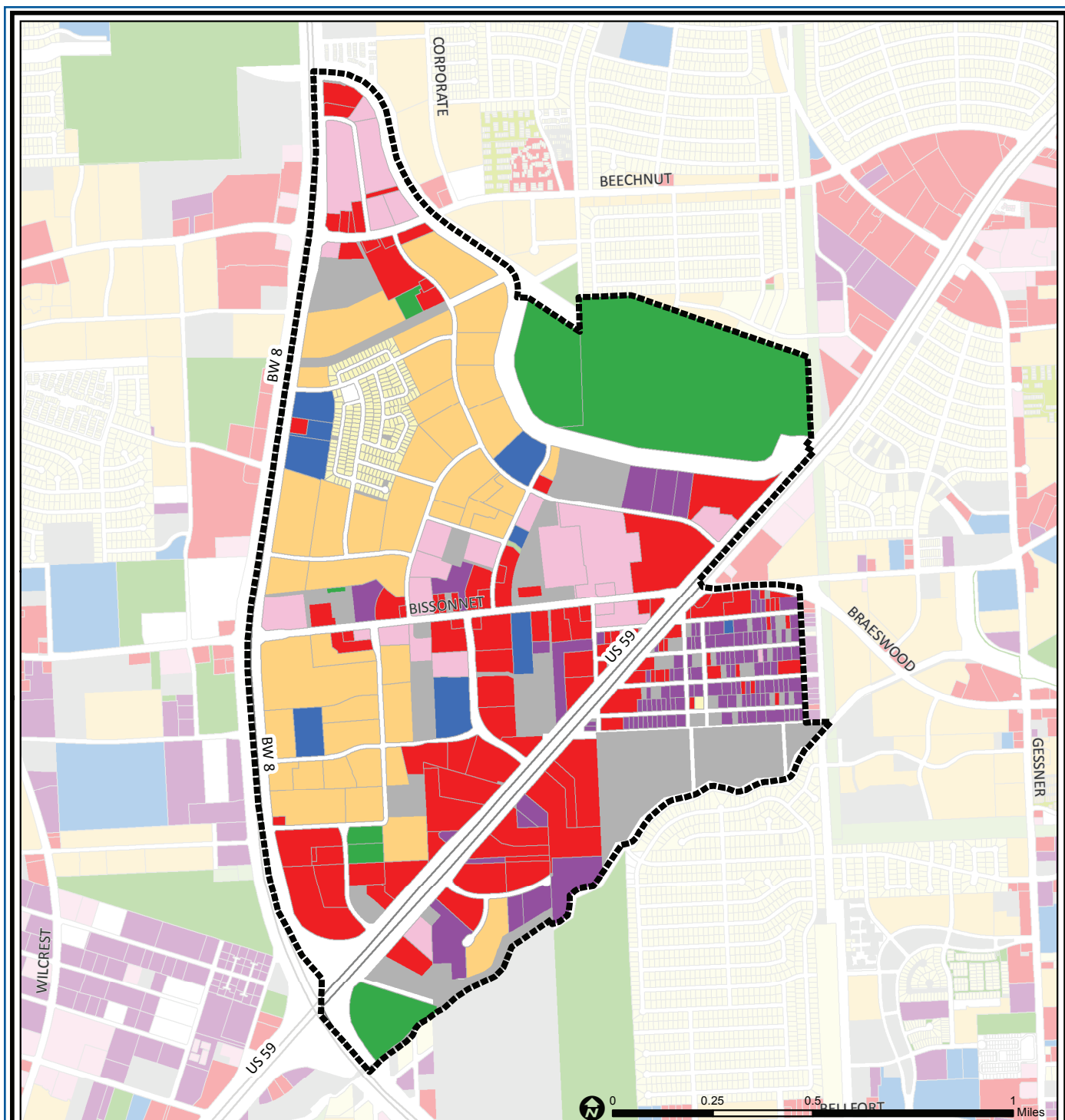
Westwood is located just inside Beltway 8 at the Southwest Freeway. The area is primarily commercial and multi-family residential; only 2.6% is single-family. It is served by Alief Independent School District.

Highlights

- ✓ Houston City Council District J
- ✓ Alief Independent School District
- ✓ Houston Independent School District
- ✓ 4 Police beats (includes bordering beats)
- ✓ 1,235 acres (1.93 sq. miles)



**PLANNING &
DEVELOPMENT
DEPARTMENT**



Westwood: Land Use

Freeway	Commercial	Parks and Open Space
Rail Road	Office	Undeveloped
Super Neighborhood Boundary	Industrial	Agricultural Production
Single-family Residential	Public and Institutional	Open Water
Multi-family Residential	Transportation and Utilities	Unknown

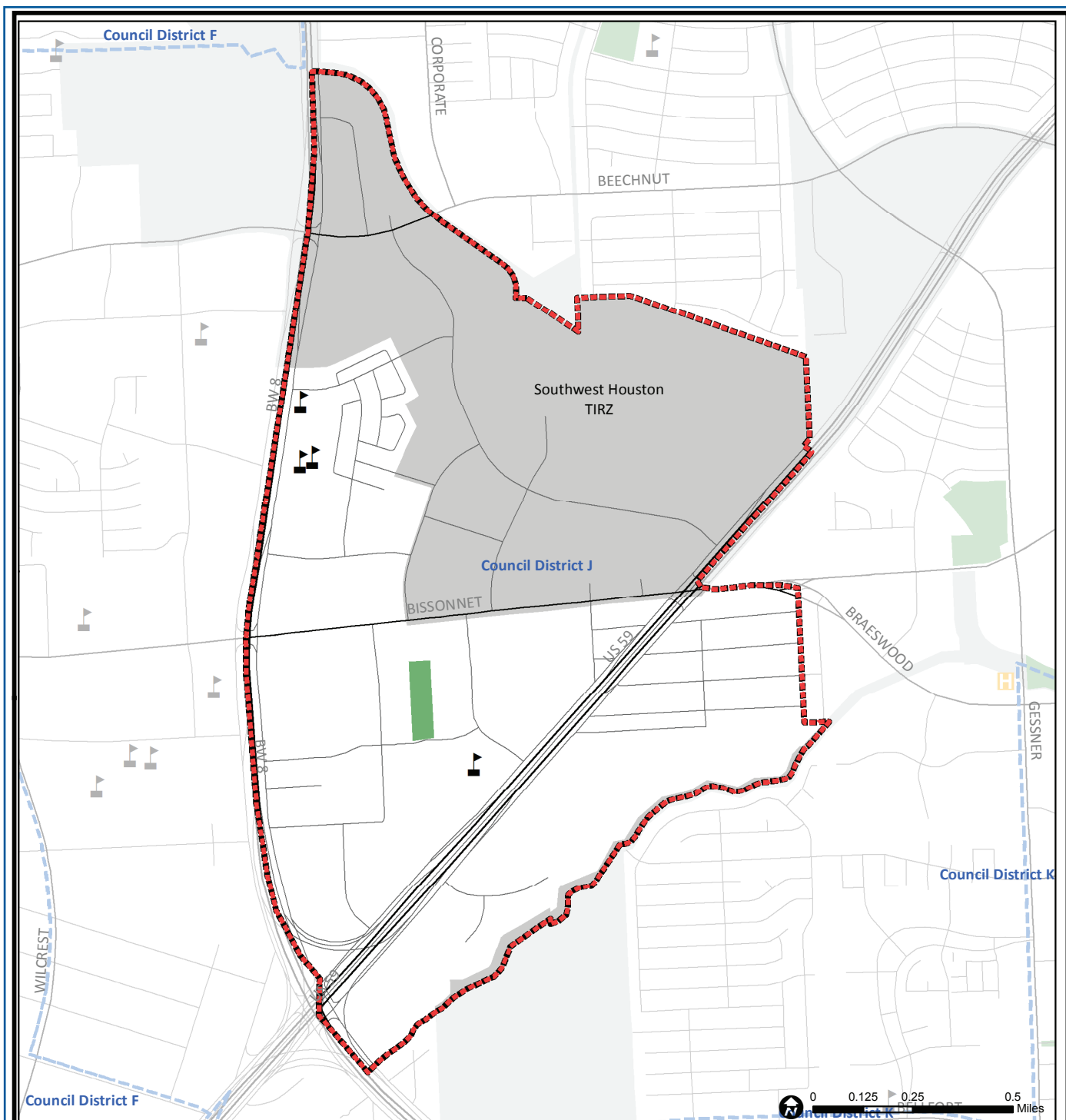
Source: City of Houston GIS Database,
Harris County Appraisal District

Date: November 16, 2017

This map is made available for reference purposes only and should not be substituted for a survey product. The City of Houston will not accept liability of any kind in conjunction with its use.



**PLANNING &
DEVELOPMENT
DEPARTMENT**



Westwood: Public Facilities

- Super Neighborhood Boundary
- Community Centers
- Fire Station
- Police Station
- School

- Airports
- Harris County Hospitals
- Private Hospitals
- Other Health Facilities
- Library

- Rail Road
- Metro Rail Stations
- Metro Rail Line
- Parks
- TIRZ

Source: City of Houston GIS Database

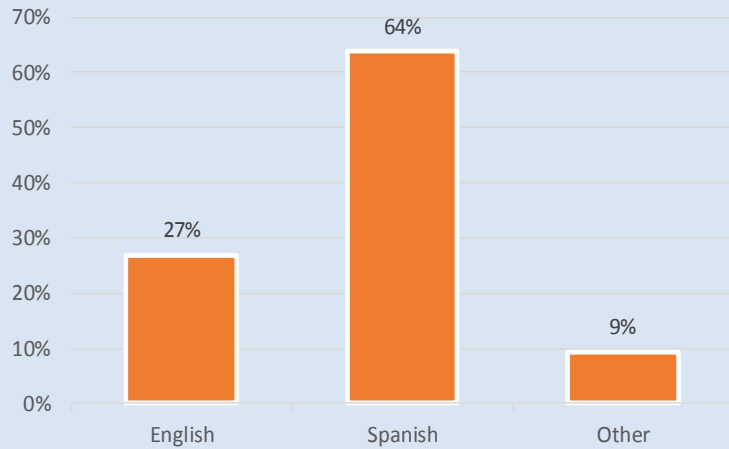
Date: November, 2017

This map is made available for reference purposes only and should not be substituted for a survey product. The City of Houston will not accept liability of any kind in conjunction with its use.

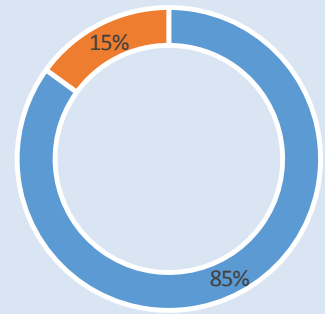


**PLANNING &
DEVELOPMENT
DEPARTMENT**

Language Spoken at Home

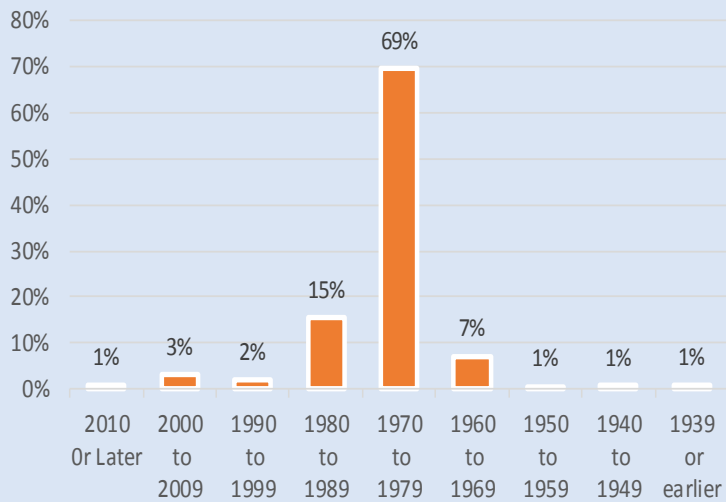


Employment Status

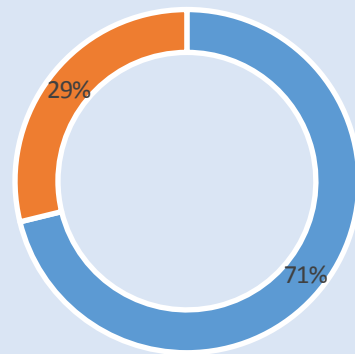


■ Employed ■ Unemployed

Housing Units by Year Built



Housing Occupancy



■ Occupied ■ Vacant

Source: U.S. Census Bureau, 2000
American Community Survey, 2011-2015 Estimates



**PLANNING &
DEVELOPMENT
DEPARTMENT**