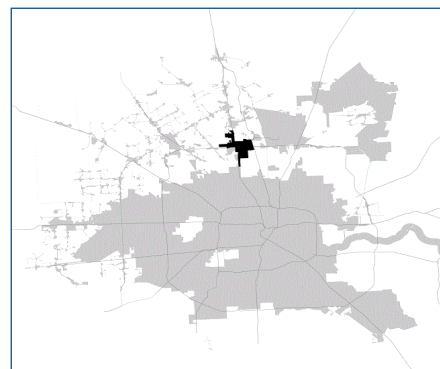


SUPER

Neighborhood

RESOURCE ASSESSMENT



	Super Neighborhood		Houston	
Pop. characteristics	2000	2015	2000	2015
Total population	40,671	41,392	1,953,631	2,217,706
Persons per sq. mile	5,844	5,951	3,166	3,314
Age of Population				
Under 5 years	12%	14%	8%	8%
5- 17 years	21%	23%	19%	17%
18- 64 years	64%	59%	64%	65%
65 and over	2%	4%	9%	10%
Ethnicity				
Non Hispanic Whites	10%	5%	31%	26%
Non Hispanic Blacks	34%	27%	25%	22%
Hispanics	53%	67%	37%	44%
Non Hispanic Asians	2%	1%	6%	7%
Non Hispanic Others	1%	1%	1%	1%
Income				
Under \$25,000	46%	48%	33%	27%
\$25,001 to \$50,000	37%	33%	31%	25%
\$50,001 to \$100,000	15%	16%	24%	26%
Over \$100,001	2%	3%	12%	22%
Median Household Income	\$27,240	\$33,909	\$36,616	\$46,187
Educational Status				
No Diploma	43%	46%	30%	23%
High School Diploma	28%	28%	20%	23%
Some College	22%	20%	23%	24%
Bachelor's or Higher	8%	6%	27%	31%
Housing and Households				
Total housing units	17,101	15,892	782,378	909,336
Occupied	83%	83%	92%	88%
Vacant	17%	17%	8%	12%
Total households	14,259	13,258	717,945	799,714
Family households	9,418	8,862	457,549	491,778
Median Housing Value	\$83,965	\$55,134	\$79,300	\$131,700

Description

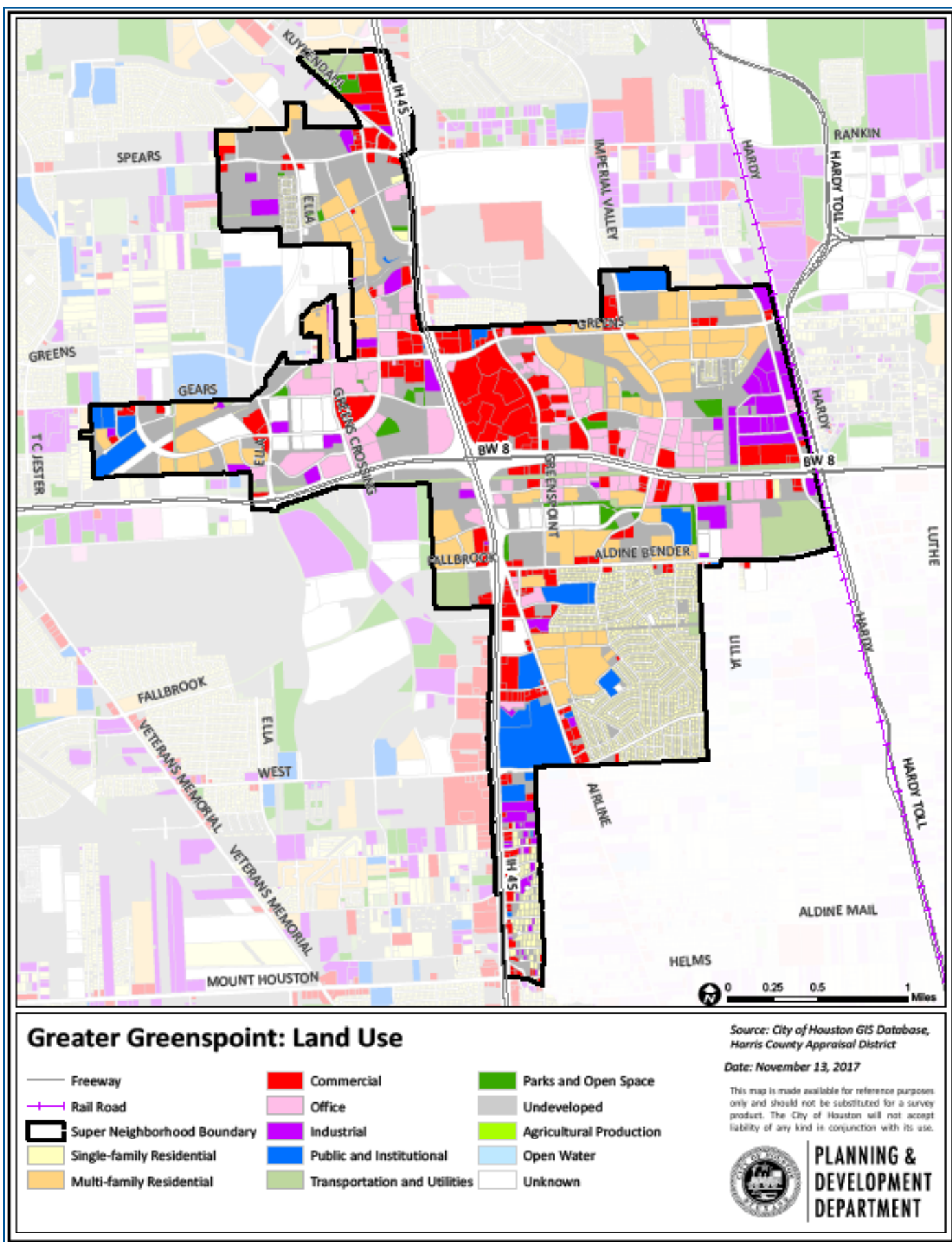
Greater Greenspoint takes its name from the shopping mall at its center. The original subdivisions here were developed for Houstonians seeking moderately priced homes in Aldine ISD close to the North Freeway. The opening of Intercontinental Airport in 1969 transformed the intersection of 1-45 and the Beltway into a commercial crossroads. The subsequent rapid development of office space around the mall provided the jobs to support massive construction of apartment complexes, which now dominate much of the landscape. The real estate bust of the last decade produced significant deterioration in those complexes, and led to the creation of a management district. Crime has been significantly reduced and renovation of thousands of the apartments is underway.

Highlights

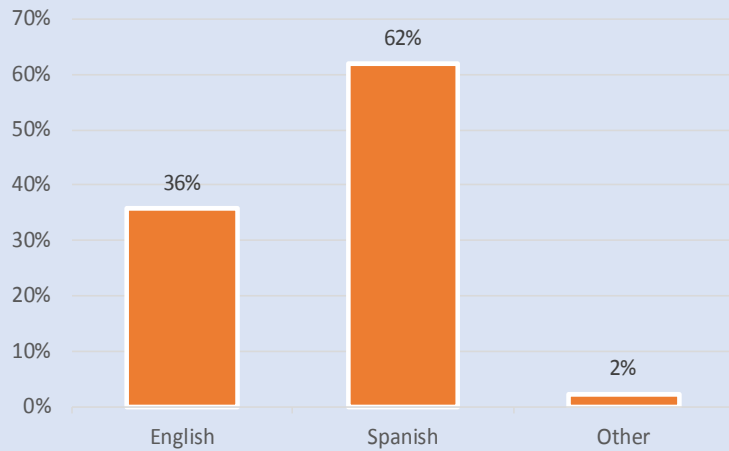
- ✓ Houston City Council Districts B & H
- ✓ Aldine Independent School District
- ✓ Spring Independent School District
- ✓ 3 Police beats (includes bordering beats)
- ✓ 4,451 acres (6.96 sq. miles)



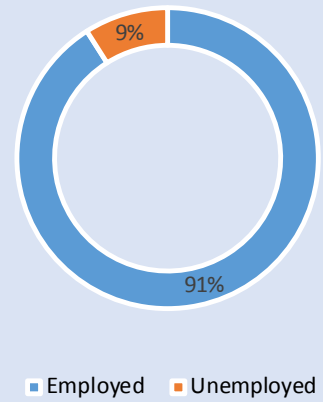
**PLANNING &
DEVELOPMENT
DEPARTMENT**



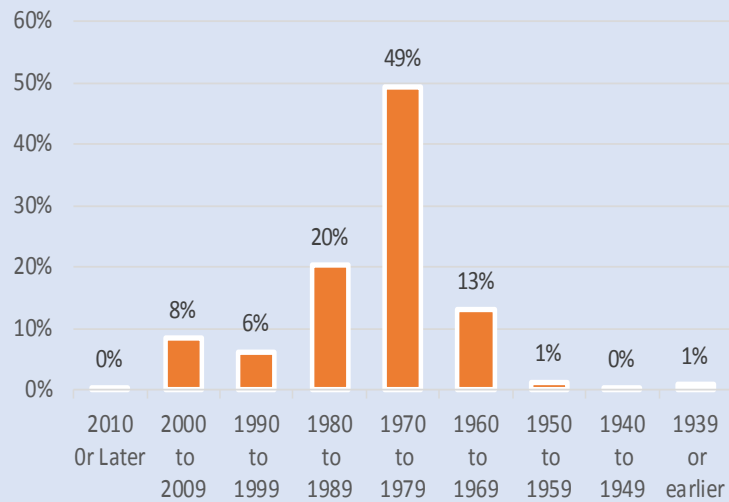
Language Spoken at Home



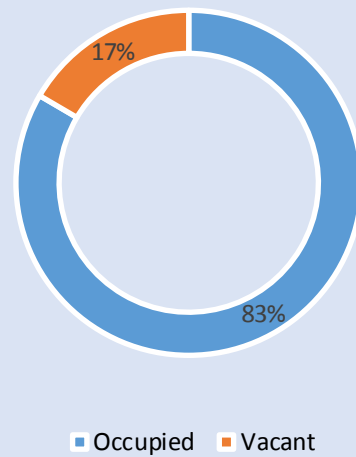
Employment Status



Housing Units by Year Built



Housing Occupancy



Source: U.S. Census Bureau, 2000
American Community Survey, 2011-2015 Estimates



**PLANNING &
DEVELOPMENT
DEPARTMENT**