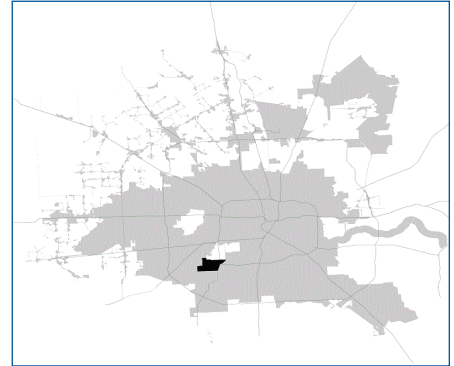


SUPER

Neighborhood

RESOURCE ASSESSMENT



	Super Neighborhood		Houston	
Pop. characteristics	2000	2015	2000	2015
Total population	19,841	21,445	1,953,631	2,217,706
Persons per sq. mile	4,851	5,221	3,166	3,314
Age of Population				
Under 5 years	6%	6%	8%	8%
5- 17 years	17%	17%	19%	17%
18- 64 years	58%	61%	64%	65%
65 and over	19%	16%	9%	10%
Ethnicity				
Non Hispanic Whites	77%	58%	31%	26%
Non Hispanic Blacks	4%	11%	25%	22%
Hispanics	9%	16%	37%	44%
Non Hispanic Asians	8%	13%	6%	7%
Non Hispanic Others	2%	2%	1%	1%
Income				
Under \$25,000	18%	20%	33%	27%
\$25,001 to \$50,000	24%	17%	31%	25%
\$50,001 to \$100,000	28%	24%	24%	26%
Over \$100,001	30%	40%	12%	22%
Median Household Income	\$65,413	\$81,408	\$36,616	\$46,187
Educational Status				
No Diploma	6%	5%	30%	23%
High School Diploma	12%	13%	20%	23%
Some College	22%	22%	23%	24%
Bachelor's or Higher	60%	59%	27%	31%
Housing and Households				
Total housing units	8,869	9,729	782,378	909,336
Occupied	96%	92%	92%	88%
Vacant	4%	8%	8%	12%
Total households	8,548	9,036	717,945	799,714
Family households	5,733	5,573	457,549	491,778
Median Housing Value	\$148,227	\$245,791	\$79,300	\$131,700

Description

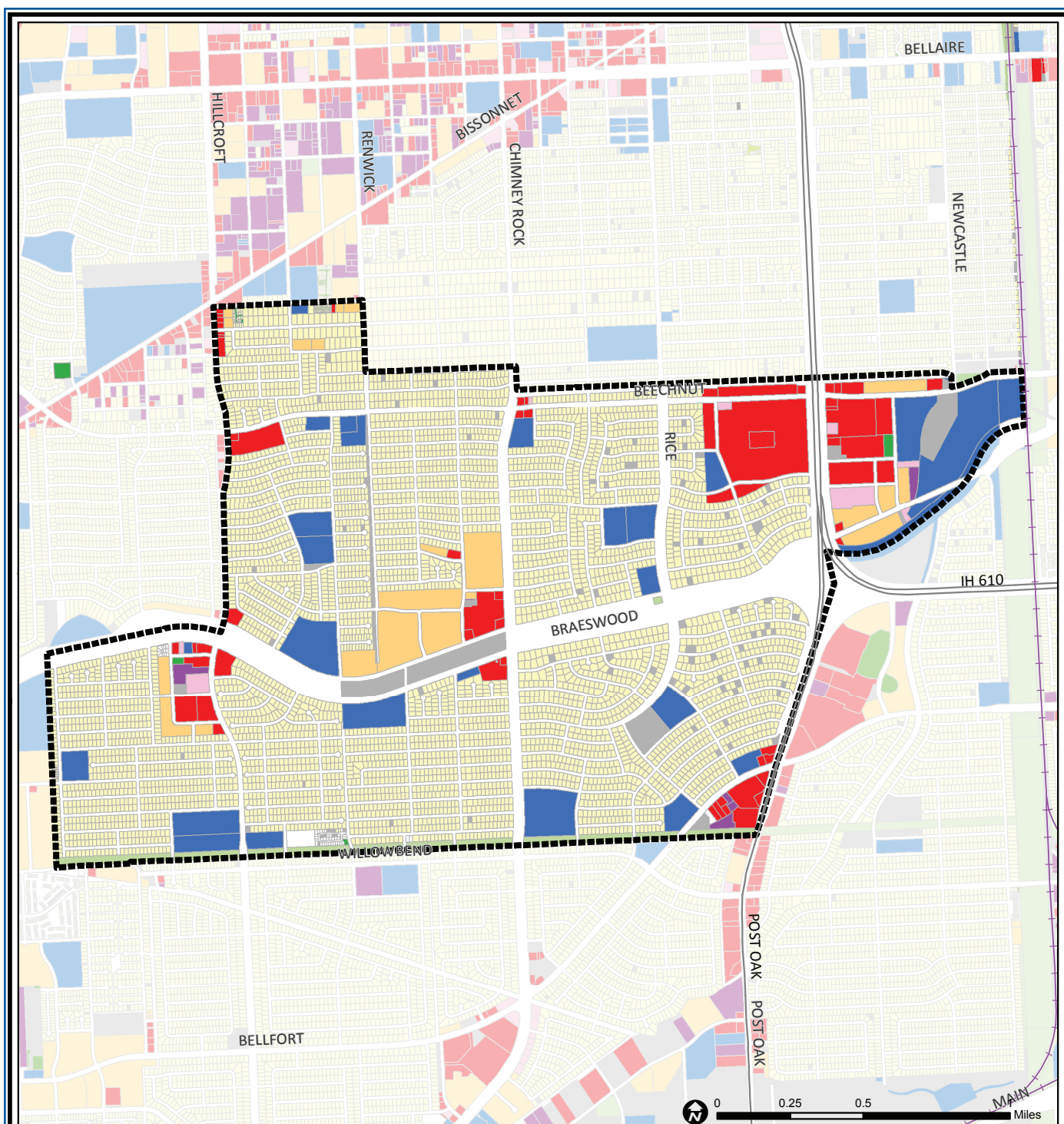
Meyerland Area is found on both sides of Brays Bayou at the southwest corner of Loop 610. Its many neighborhoods include Meyerland, Marilyn Estates, Barkley Square and Maplewood. Many institutions of Houston's Jewish community are found here, including several temples and the Jewish Community Center. The northeast corner of the community includes the recently developed Meyerland Center retail development. The area was developed beginning in the 1950s.

Highlights

- ✓ Houston City Council Districts C & K
- ✓ Houston Independent School District
- ✓ 6 Police beats (includes bordering beats)
- ✓ 2,615 acres (4.09 sq. miles)



**PLANNING &
DEVELOPMENT
DEPARTMENT**



Meyerland Area: Land Use

Freeway	Commercial	Parks and Open Space
Rail Road	Office	Undeveloped
Super Neighborhood Boundary	Industrial	Agricultural Production
Single-family Residential	Public and Institutional	Open Water
Multi-family Residential	Transportation and Utilities	Unknown

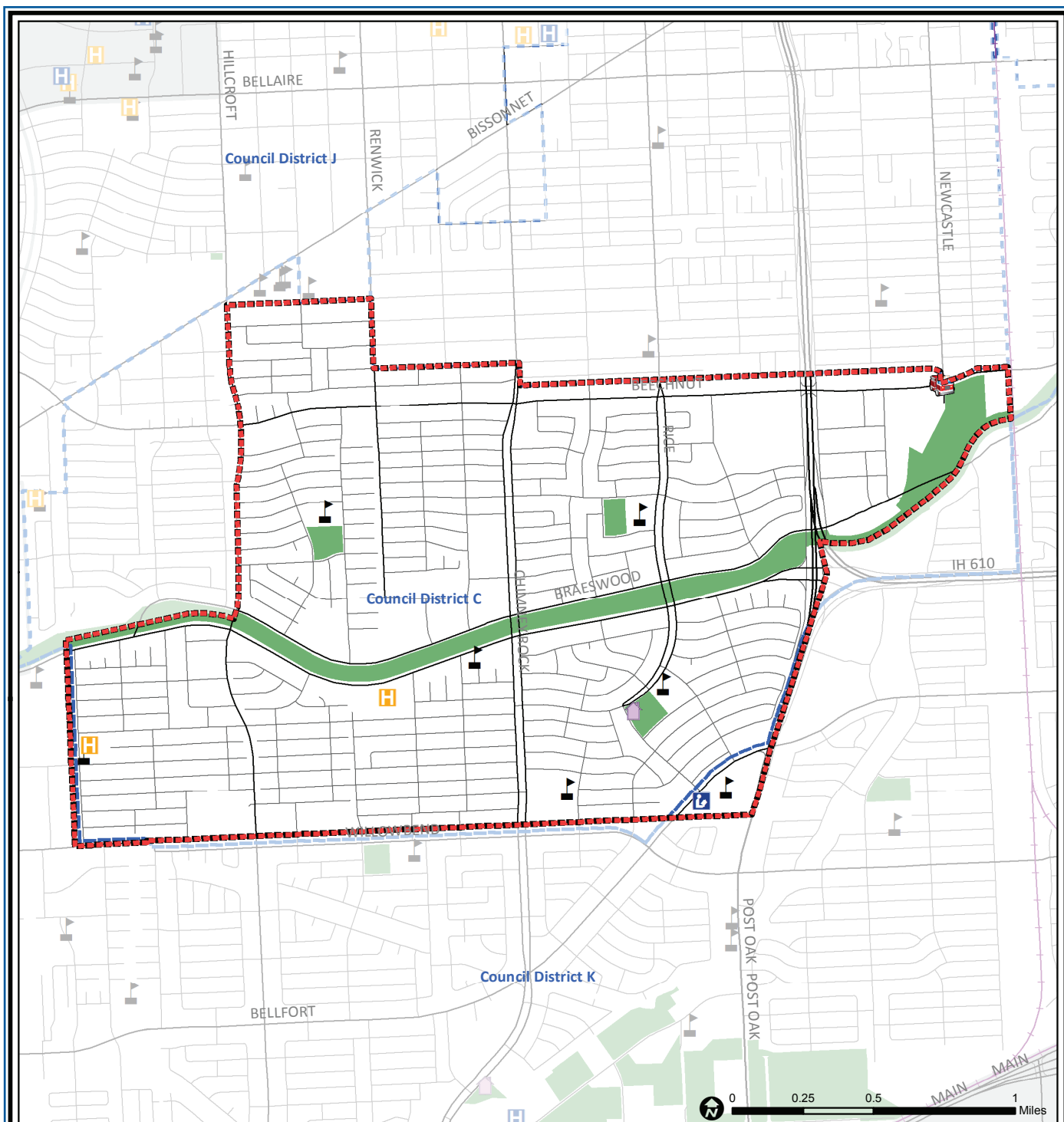
Source: City of Houston GIS Database,
Harris County Appraisal District

Date: November 16, 2017

This map is made available for reference purposes only and should not be substituted for a survey product. The City of Houston will not accept liability of any kind in conjunction with its use.



**PLANNING &
DEVELOPMENT
DEPARTMENT**



Meyerland Area: Public Facilities

	Super Neighborhood Boundary		Airports		Rail Road
	Community Centers		Harris County Hospitals		Metro Rail Stations
	Fire Station		Private Hospitals		Metro Rail Line
	Police Station		Other Health Facilities		Parks
	School		Library		TIRZ

Source: City of Houston GIS Database

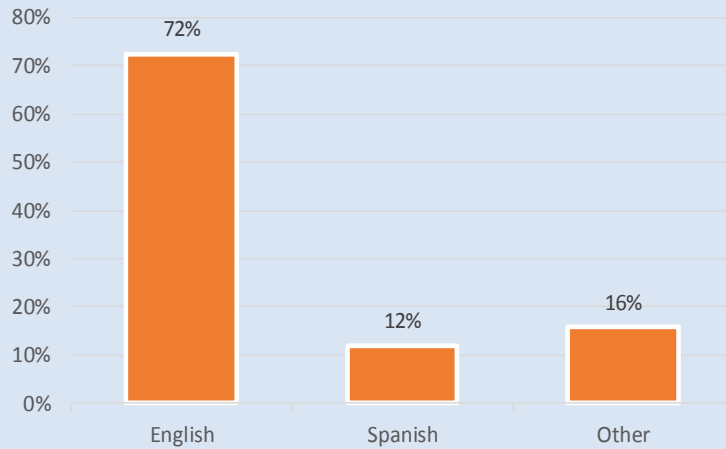
Date: October 2017

This map is made available for reference purposes only and should not be substituted for a survey product. The City of Houston will not accept liability of any kind in conjunction with its use.

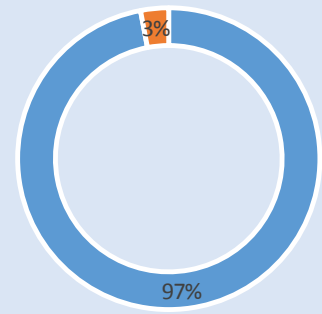


**PLANNING &
DEVELOPMENT
DEPARTMENT**

Language Spoken at Home

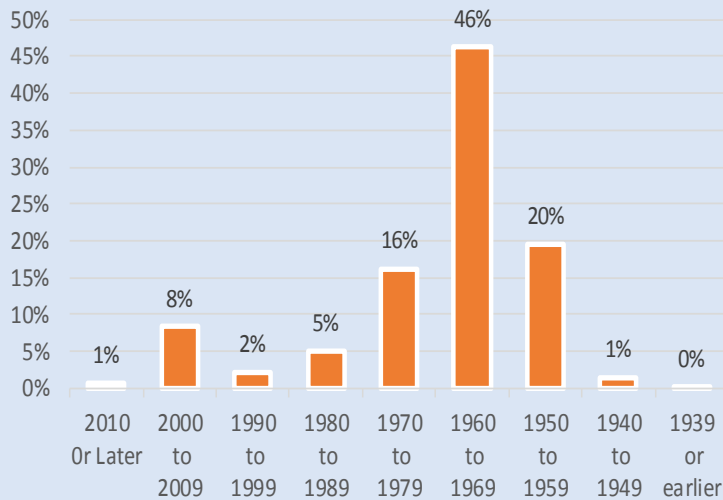


Employment Status

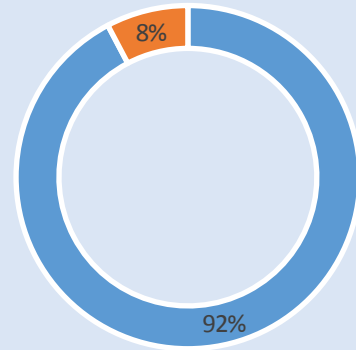


■ Employed ■ Unemployed

Housing Units by Year Built



Housing Occupancy



■ Occupied ■ Vacant

Source: U.S. Census Bureau, 2000
American Community Survey, 2011-2015 Estimates



**PLANNING &
DEVELOPMENT
DEPARTMENT**