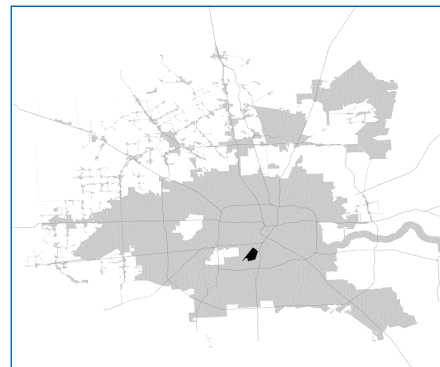


SUPER

Neighborhood

RESOURCE ASSESSMENT



	Super Neighborhood		Houston	
Pop. characteristics	2000	2015	2000	2015
Total population	2,358	2,717	1,953,631	2,217,706
Persons per sq. mile	2,015	1,551	3,166	3,314
Age of Population				
Under 5 years	5%	4%	8%	8%
5- 17 years	7%	3%	19%	17%
18- 64 years	75%	78%	64%	65%
65 and over	14%	15%	9%	10%
Ethnicity				
Non Hispanic Whites	47%	52%	31%	26%
Non Hispanic Blacks	8%	16%	25%	22%
Hispanics	10%	12%	37%	44%
Non Hispanic Asians	33%	16%	6%	7%
Non Hispanic Others	2%	4%	1%	1%
Income				
Under \$25,000	32%	21%	33%	27%
\$25,001 to \$50,000	28%	12%	31%	25%
\$50,001 to \$100,000	26%	28%	24%	26%
Over \$100,001	14%	39%	12%	22%
Median Household Income	\$53,582	\$82,830	\$36,616	\$46,187
Educational Status				
No Diploma	11%	3%	30%	23%
High School Diploma	12%	8%	20%	23%
Some College	14%	12%	23%	24%
Bachelor's or Higher	63%	77%	27%	31%
Housing and Households				
Total housing units	1,134	1,628	782,378	909,336
Occupied	94%	83%	92%	88%
Vacant	6%	17%	8%	12%
Total households	1,061	1,350	717,945	799,714
Family households	485	548	457,549	491,778
Median Housing Value	\$256,265	\$328,369	\$79,300	\$131,700

Description

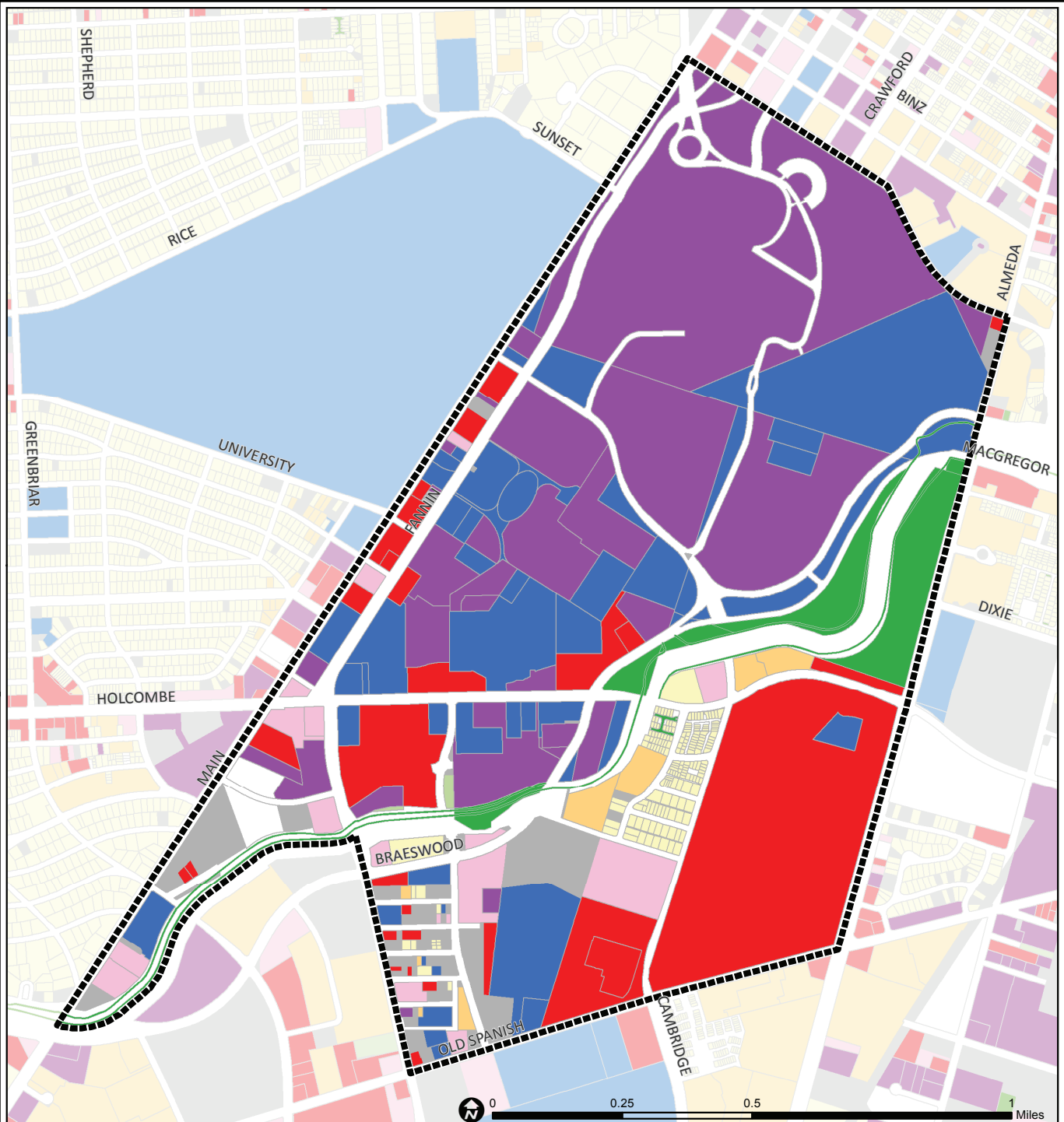
Medical Center Area includes the original campus of the Texas Medical Center, Hermann Park, from which it was carved, and a fringe of private development. The Texas Medical Center itself has expanded its campus far beyond the original site north of Holcombe and east of Fannin, and has replaced the early restaurants and shopping centers on Main Street with high rise hotels, outpatient clinics and professional buildings. Hermann Park, home of the city's zoo, amphitheater, and museum of natural history is bordered on the north by several high rise condominiums, a private hospital and a medical museum.

Highlights

- ✓ Houston City Council Districts D & K
- ✓ Houston Independent School District
- ✓ 3 Police beats (includes bordering beats)
- ✓ 746 acres (1.17 sq. miles)



**PLANNING &
DEVELOPMENT
DEPARTMENT**



Medical Center: Land Use

	Freeway		Commercial		Parks and Open Space
	Rail Road		Office		Undeveloped
	Super Neighborhood Boundary		Industrial		Agricultural Production
	Single-family Residential		Public and Institutional		Open Water
	Multi-family Residential		Transportation and Utilities		Unknown

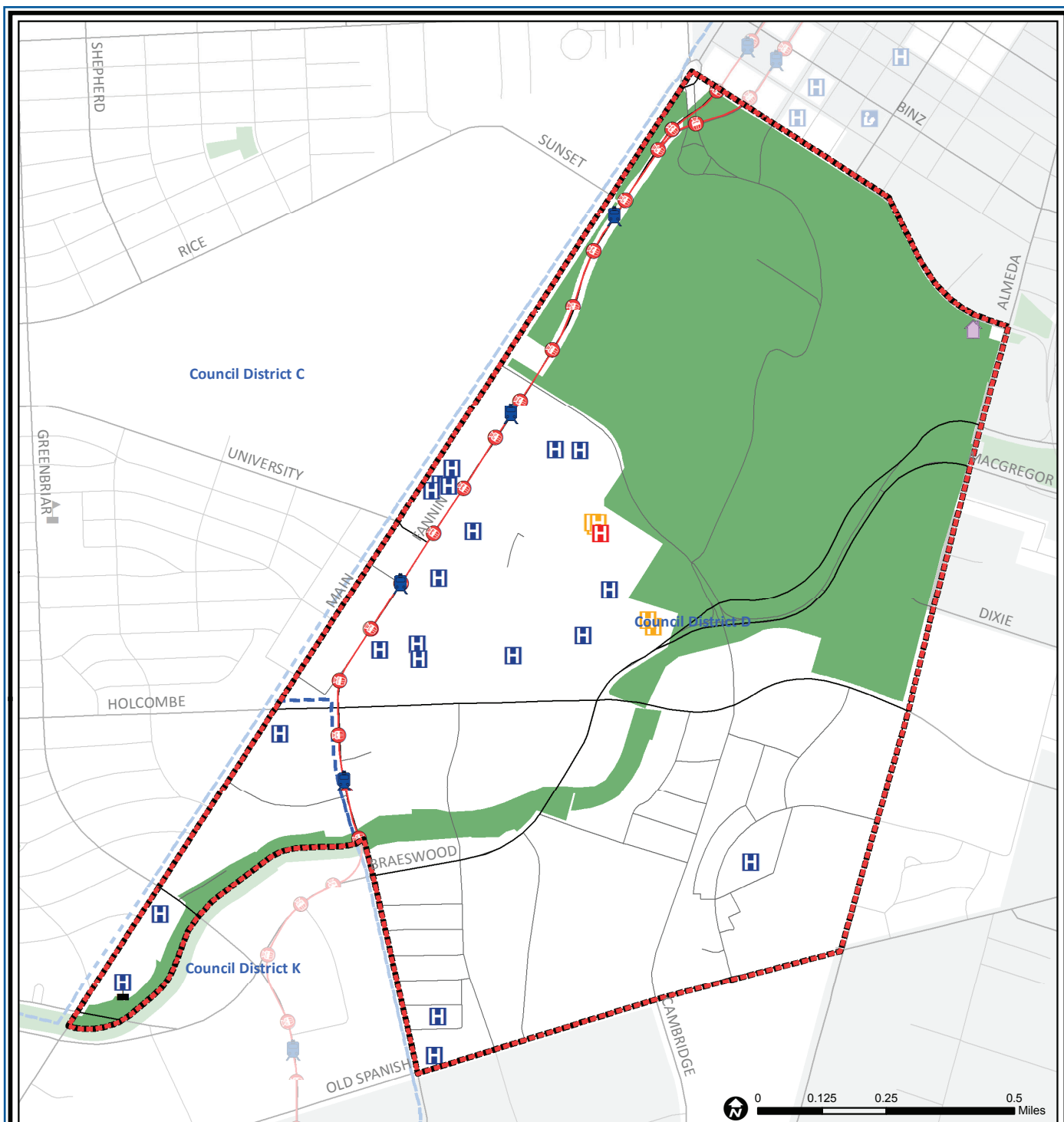
Source: City of Houston GIS Database,
Harris County Appraisal District

Date: November 16, 2017

This map is made available for reference purposes only and should not be substituted for a survey product. The City of Houston will not accept liability of any kind in conjunction with its use.



**PLANNING &
DEVELOPMENT
DEPARTMENT**



Medical Center Area: Public Facilities

	Super Neighborhood Boundary		Airports		Rail Road
	Community Centers		Harris County Hospitals		Metro Rail Stations
	Fire Station		Private Hospitals		Metro Rail Line
	Police Station		Other Health Facilities		Parks
	School		Library		TIRZ

Source: City of Houston GIS Database

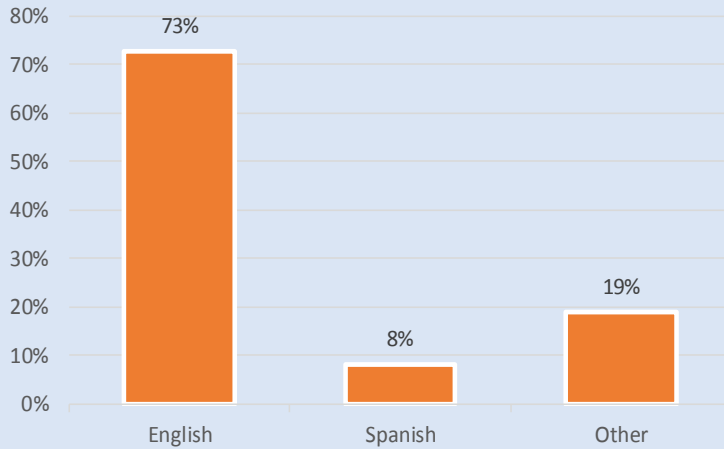
Date: November 2017

This map is made available for reference purposes only and should not be substituted for a survey product. The City of Houston will not accept liability of any kind in conjunction with its use.

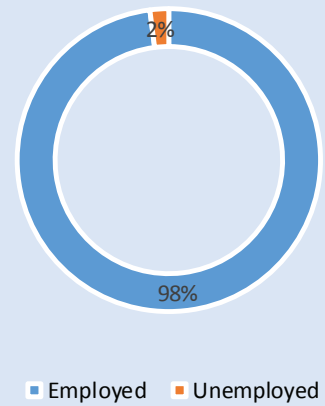


**PLANNING &
DEVELOPMENT
DEPARTMENT**

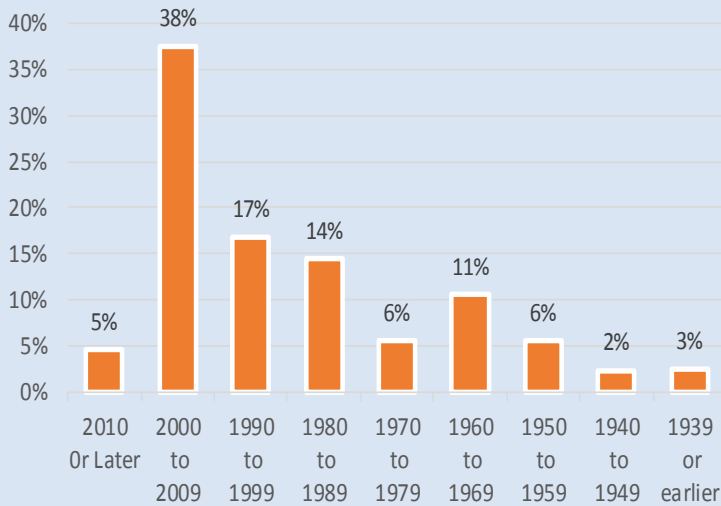
Language Spoken at Home



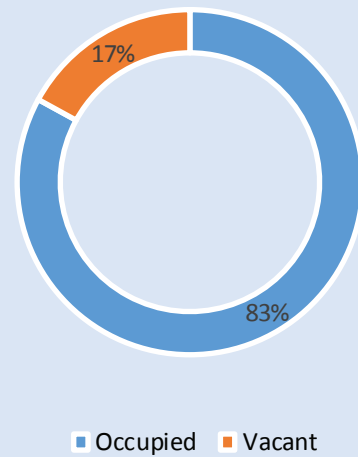
Employment Status



Housing Units by Year Built



Housing Occupancy



Source: U.S. Census Bureau, 2000
American Community Survey, 2011-2015 Estimates



**PLANNING &
DEVELOPMENT
DEPARTMENT**