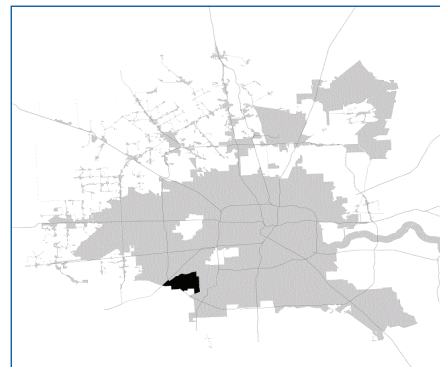


SUPER

Neighborhood

RESOURCE ASSESSMENT



	Super Neighborhood		Houston	
Pop. characteristics	2000	2015	2000	2015
Total population	49,436	64,548	1,953,631	2,217,706
Persons per sq. mile	6,250	8,160	3,166	3,314
Age of Population				
Under 5 years	10%	9%	8%	8%
5- 17 years	22%	19%	19%	17%
18- 64 years	63%	62%	64%	65%
65 and over	6%	9%	9%	10%
Ethnicity				
Non Hispanic Whites	15%	13%	31%	26%
Non Hispanic Blacks	53%	45%	25%	22%
Hispanics	25%	33%	37%	44%
Non Hispanic Asians	6%	6%	6%	7%
Non Hispanic Others	2%	2%	1%	1%
Income				
Under \$25,000	35%	33%	33%	27%
\$25,001 to \$50,000	33%	30%	31%	25%
\$50,001 to \$100,000	24%	25%	24%	26%
Over \$100,001	8%	12%	12%	22%
Median Household Income	\$36,122	\$42,414	\$36,616	\$46,187
Educational Status				
No Diploma	23%	24%	30%	23%
High School Diploma	20%	24%	20%	23%
Some College	30%	27%	23%	24%
Bachelor's or Higher	27%	25%	27%	31%
Housing and Households				
Total housing units	18,824	25,197	782,378	909,336
Occupied	95%	89%	92%	88%
Vacant	5%	11%	8%	12%
Total households	17,859	22,413	717,945	799,714
Family households	12,177	14,609	457,549	491,778
Median Housing Value	\$80,144	\$106,431	\$79,300	\$131,700

Description

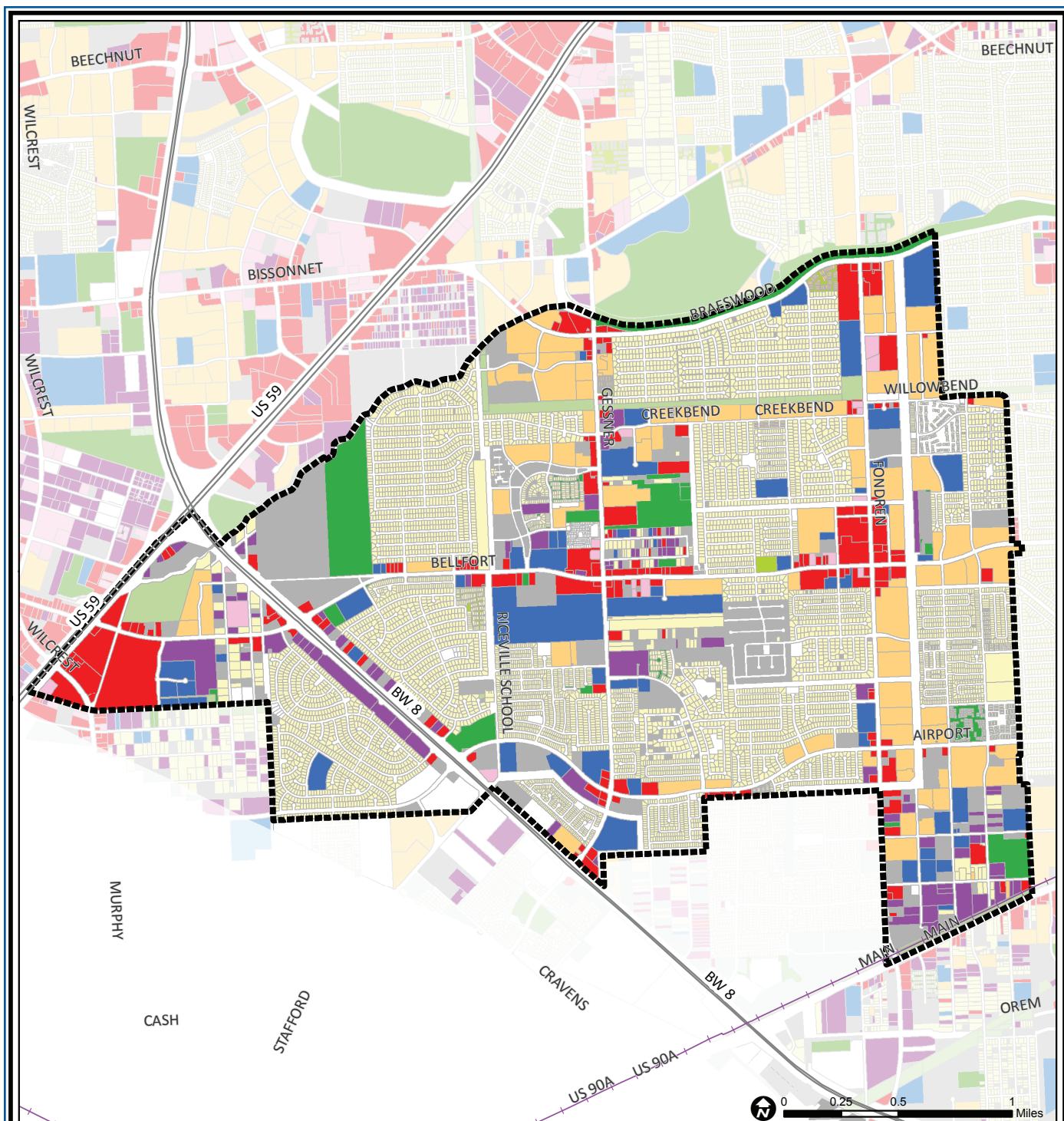
Greater Fondren Southwest is found at the southwest corner of Beltway 8. The center of the area was undeveloped until the 1970s when construction began in Fondren Southwest. The area includes the neighborhoods of Braeburn Valley West and Glenshire. Many of the homes built in Fondren Southwest were large and expensive, frequently contemporary in style. Much land was reserved for apartment construction, and thousands were built along the major thoroughfares. When the local market collapsed in the 1980s, these complexes deteriorated rapidly. The community has successfully worked to eliminate the worst of these complexes. Recently several orthodox Jewish congregations have located in the area, adding to its diversity.

Highlights

- ✓ Houston City Council Districts K & J
- ✓ Houston Independent School District
- ✓ Alief Independent School District
- ✓ Stafford Municipal School District
- ✓ 5 Police beats (includes bordering beats)
- ✓ 5,063 acres (7.91 sq. miles)



**PLANNING &
DEVELOPMENT
DEPARTMENT**



Brays Oaks: Land Use

Freeway	Commercial	Parks and Open Space
Rail Road	Office	Undeveloped
Super Neighborhood Boundary	Industrial	Agricultural Production
Single-family Residential	Public and Institutional	Open Water
Multi-family Residential	Transportation and Utilities	Unknown

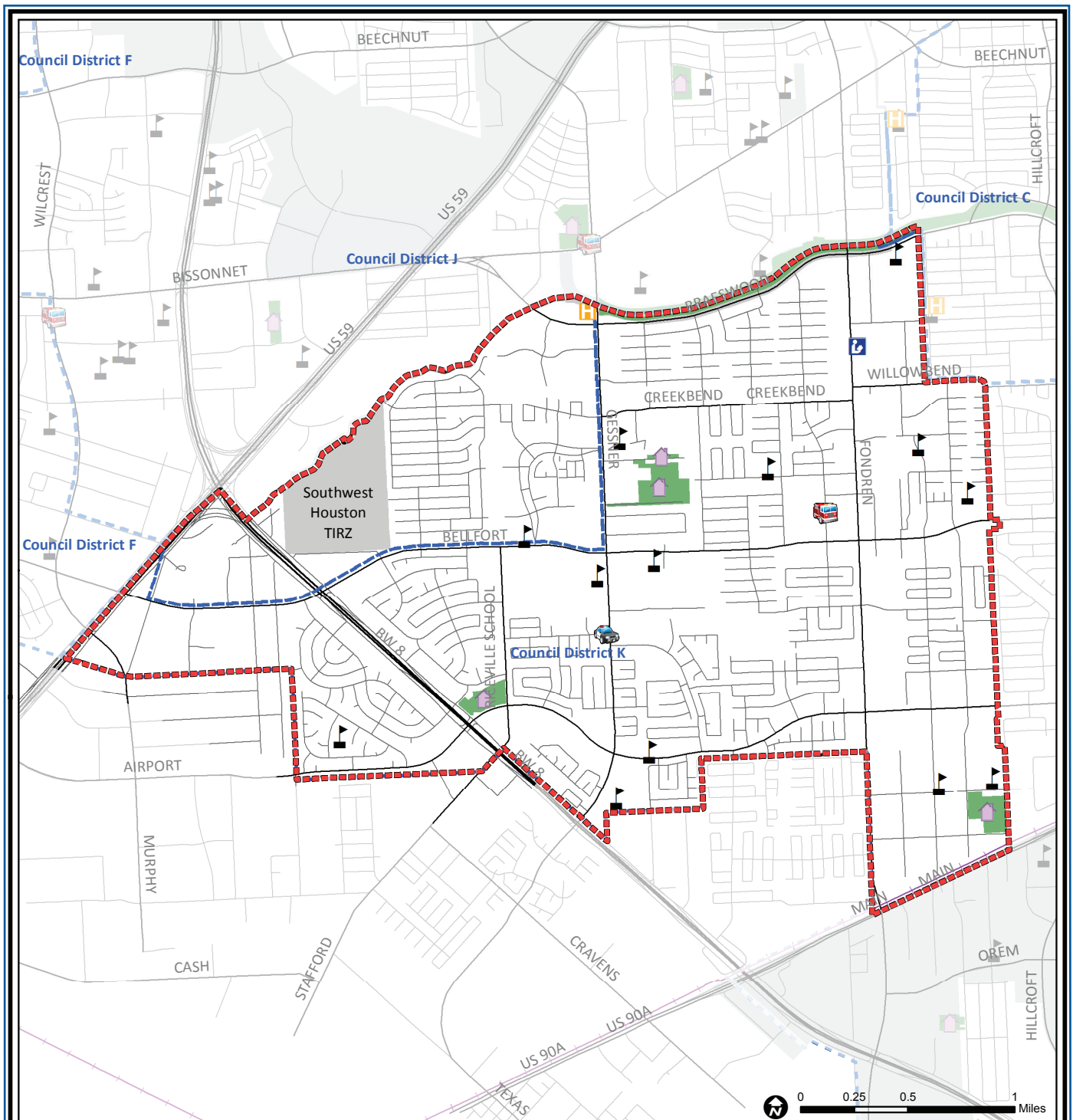
Source: City of Houston GIS Database,
Harris County Appraisal District

Date: November 15, 2017

This map is made available for reference purposes only and should not be substituted for a survey product. The City of Houston will not accept liability of any kind in conjunction with its use.



**PLANNING &
DEVELOPMENT
DEPARTMENT**



Brays Oaks: Public Facilities

	Super Neighborhood Boundary		Airports		Rail Road
	Community Centers		Harris County Hospitals		Metro Rail Stations
	Fire Station		Private Hospitals		Metro Rail Line
	Police Station		Other Health Facilities		Parks
	School		Library		TIRZ

Source: City of Houston GIS Database

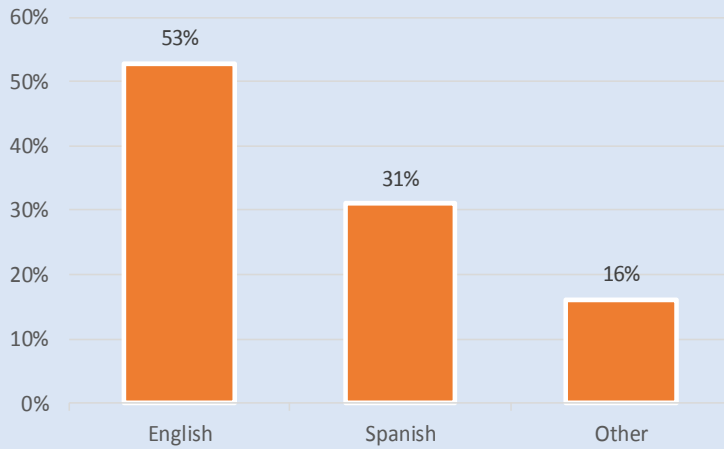
Date: October 2017

This map is made available for reference purposes only and should not be substituted for a survey product. The City of Houston will not accept liability of any kind in conjunction with its use.

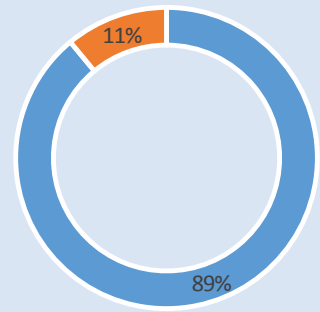


**PLANNING &
DEVELOPMENT
DEPARTMENT**

Language Spoken at Home

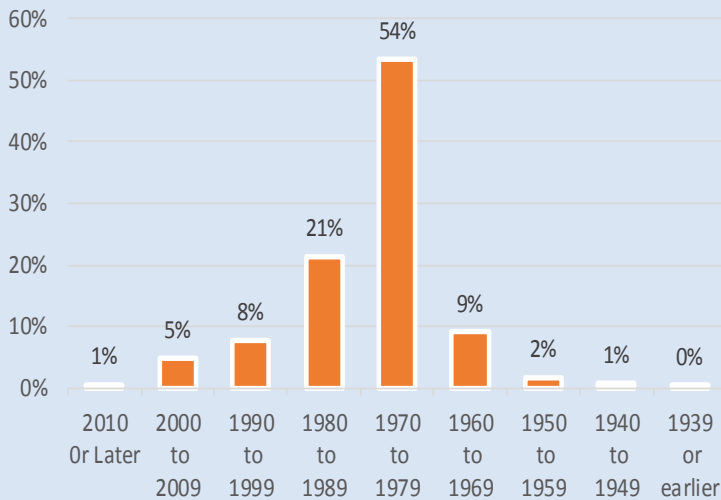


Employment Status

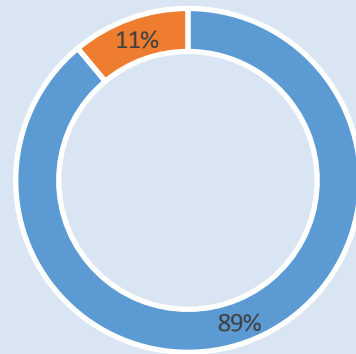


■ Employed ■ Unemployed

Housing Units by Year Built



Housing Occupancy



■ Occupied ■ Vacant

Source: U.S. Census Bureau, 2000
American Community Survey, 2011-2015 Estimates



**PLANNING &
DEVELOPMENT
DEPARTMENT**