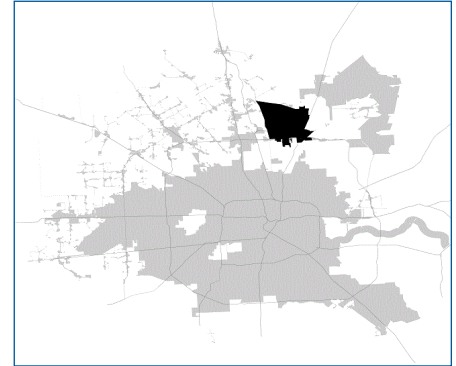


SUPER

Neighborhood

RESOURCE ASSESSMENT



	Super Neighborhood		Houston	
Pop. characteristics	2000	2015	2000	2015
Total population	5,590	15,752	1,953,631	2,217,706
Persons per sq. mile	209	588	3,166	3,314
Age of Population				
Under 5 years	7%	11%	8%	8%
5- 17 years	19%	22%	19%	17%
18- 64 years	65%	62%	64%	65%
65 and over	8%	5%	9%	10%
Ethnicity				
Non Hispanic Whites	45%	11%	31%	26%
Non Hispanic Blacks	20%	41%	25%	22%
Hispanics	30%	46%	37%	44%
Non Hispanic Asians	3%	1%	6%	7%
Non Hispanic Others	2%	2%	1%	1%
Income				
Under \$25,000	36%	34%	33%	27%
\$25,001 to \$50,000	34%	32%	31%	25%
\$50,001 to \$100,000	25%	28%	24%	26%
Over \$100,001	4%	5%	12%	22%
Median Household Income	\$32,844	\$51,435	\$36,616	\$46,187
Educational Status				
No Diploma	38%	25%	30%	23%
High School Diploma	34%	32%	20%	23%
Some College	20%	33%	23%	24%
Bachelor's or Higher	8%	10%	27%	31%
Housing and Households				
Total housing units	1,911	5,751	782,378	909,336
Occupied	91%	93%	92%	88%
Vacant	9%	7%	8%	12%
Total households	1,734	5,328	717,945	799,714
Family households	1,284	3,541	457,549	491,778
Median Housing Value	\$66,255	\$123,352	\$79,300	\$131,700

Description

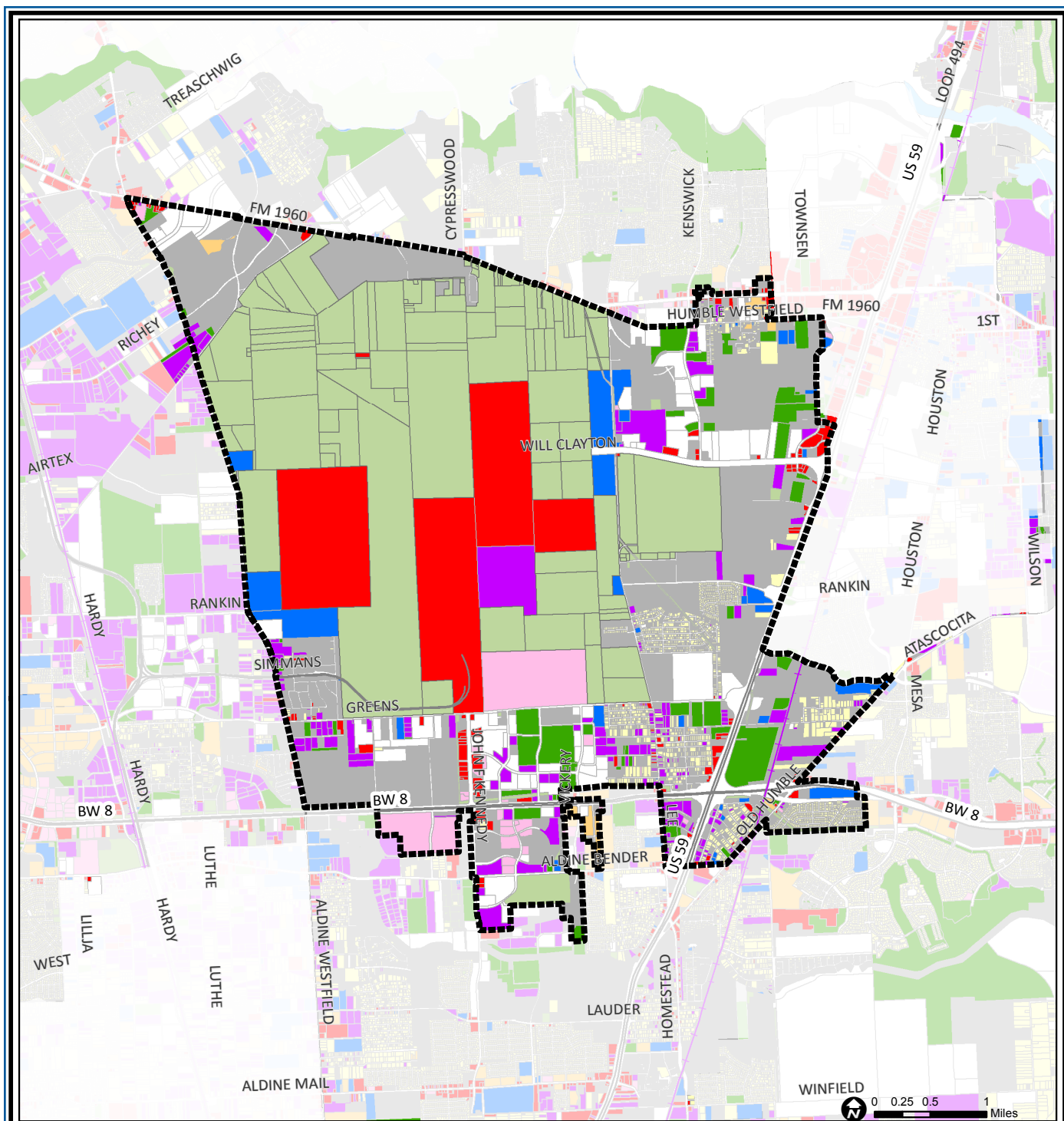
The IAH / Airport Area consists of subdivisions, commercial developments and undeveloped land surrounding George Bush Intercontinental Airport. Planning and land acquisition for the airport began in the early 1960s when this area included heavily wooded land on the edge of development. Many of the small subdivisions here recently received city water and sewer service, reflecting their origins as rural homesites. One such community is Bordersville, the last section of which was recently annexed at its residents' request. The World Houston and Interwood developments on the airport's south side are major employment centers.

Highlights

- ✓ Houston City Council District B
- ✓ Aldine Independent School District
- ✓ Humble Independent School District
- ✓ 9 Police beats (includes bordering beats)
- ✓ 17,104 acres (26.73 sq. miles)



**PLANNING &
DEVELOPMENT
DEPARTMENT**



IAH Airport Area: Land Use

	Freeway		Commercial		Parks and Open Space
	Rail Road		Office		Undeveloped
	Super Neighborhood Boundary		Industrial		Agricultural Production
	Single-family Residential		Public and Institutional		Open Water
	Multi-family Residential		Transportation and Utilities		Unknown

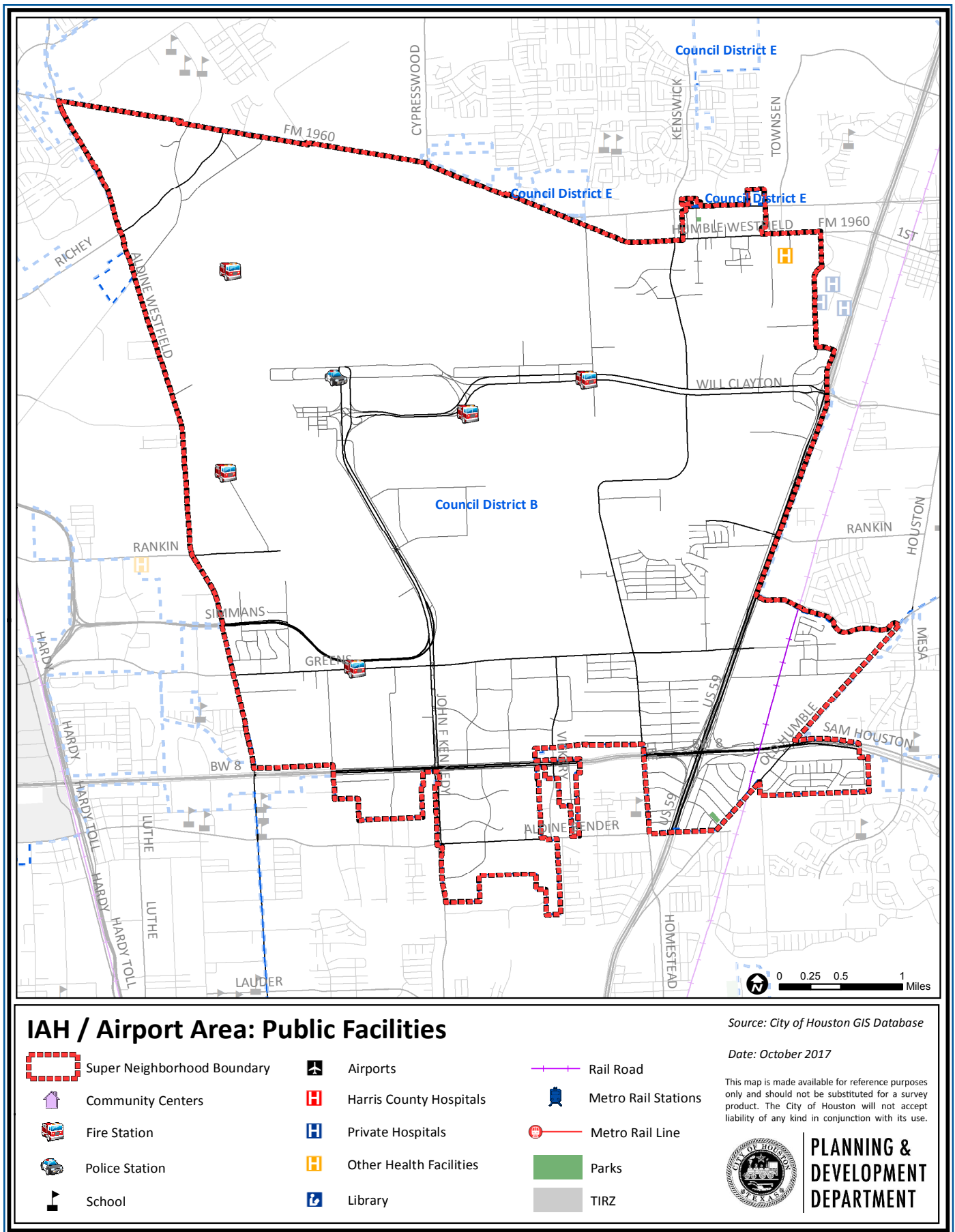
Source: City of Houston GIS Database,
Harris County Appraisal District

Date: November 16, 2017

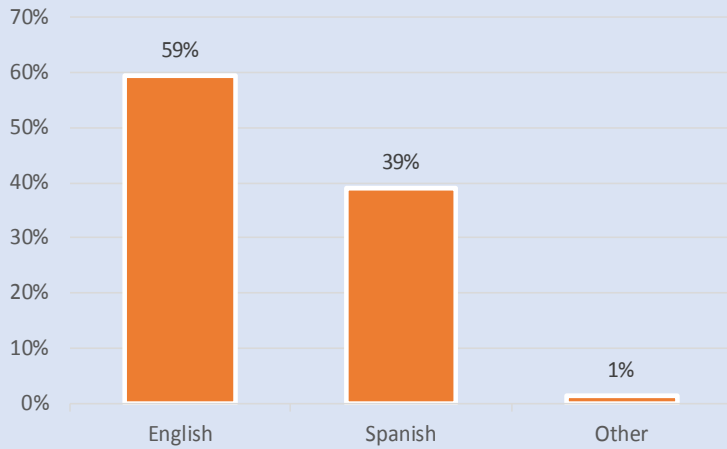
This map is made available for reference purposes only and should not be substituted for a survey product. The City of Houston will not accept liability of any kind in conjunction with its use.



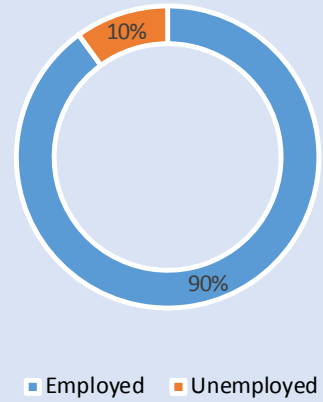
**PLANNING &
DEVELOPMENT
DEPARTMENT**



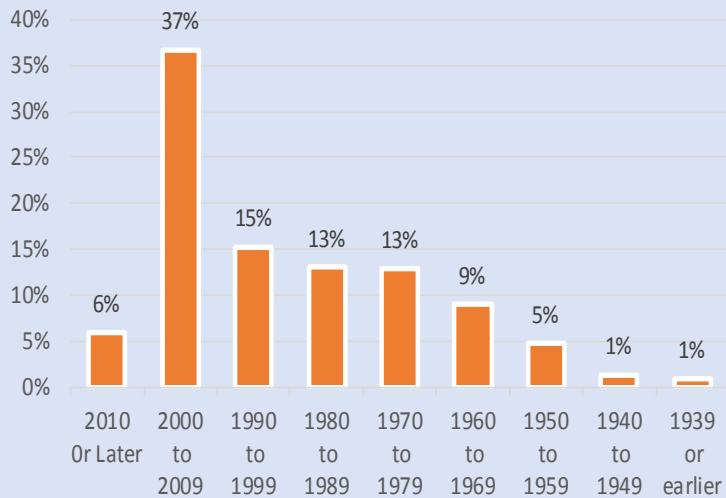
Language Spoken at Home



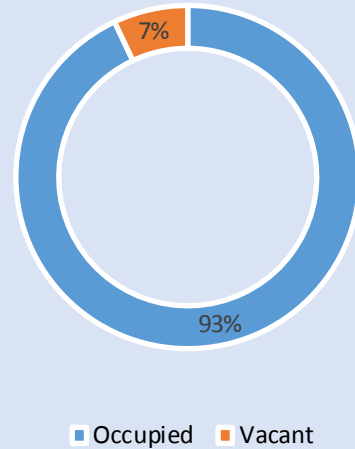
Employment Status



Housing Units by Year Built



Housing Occupancy



Source: U.S. Census Bureau, 2000
American Community Survey, 2011-2015 Estimates



**PLANNING &
DEVELOPMENT
DEPARTMENT**