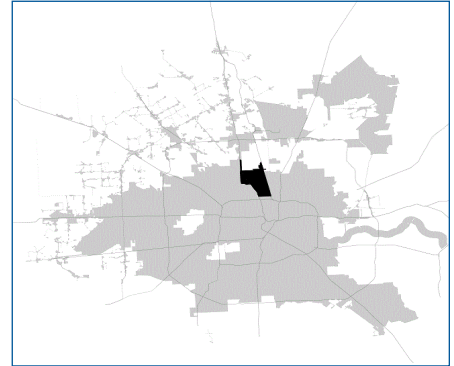


SUPER

Neighborhood

RESOURCE ASSESSMENT



	Super Neighborhood		Houston	
Pop. characteristics	2000	2015	2000	2015
Total population	54,676	59,410	1,953,631	2,217,706
Persons per sq. mile	5,397	5,868	3,166	3,314
Age of Population				
Under 5 years	10%	9%	8%	8%
5- 17 years	24%	23%	19%	17%
18- 64 years	58%	60%	64%	65%
65 and over	8%	8%	9%	10%
Ethnicity				
Non Hispanic Whites	18%	7%	31%	26%
Non Hispanic Blacks	7%	9%	25%	22%
Hispanics	74%	84%	37%	44%
Non Hispanic Asians	1%	0%	6%	7%
Non Hispanic Others	1%	0%	1%	1%
Income				
Under \$25,000	45%	40%	33%	27%
\$25,001 to \$50,000	33%	29%	31%	25%
\$50,001 to \$100,000	19%	24%	24%	26%
Over \$100,001	3%	6%	12%	22%
Median Household Income	\$27,773	\$33,713	\$36,616	\$46,187
Educational Status				
No Diploma	58%	49%	30%	23%
High School Diploma	24%	31%	20%	23%
Some College	13%	16%	23%	24%
Bachelor's or Higher	4%	4%	27%	31%
Housing and Households				
Total housing units	17,018	18,933	782,378	909,336
Occupied	93%	91%	92%	88%
Vacant	7%	9%	8%	12%
Total households	15,837	17,152	717,945	799,714
Family households	12,081	13,003	457,549	491,778
Median Housing Value	\$49,994	\$86,435	\$79,300	\$131,700

Description

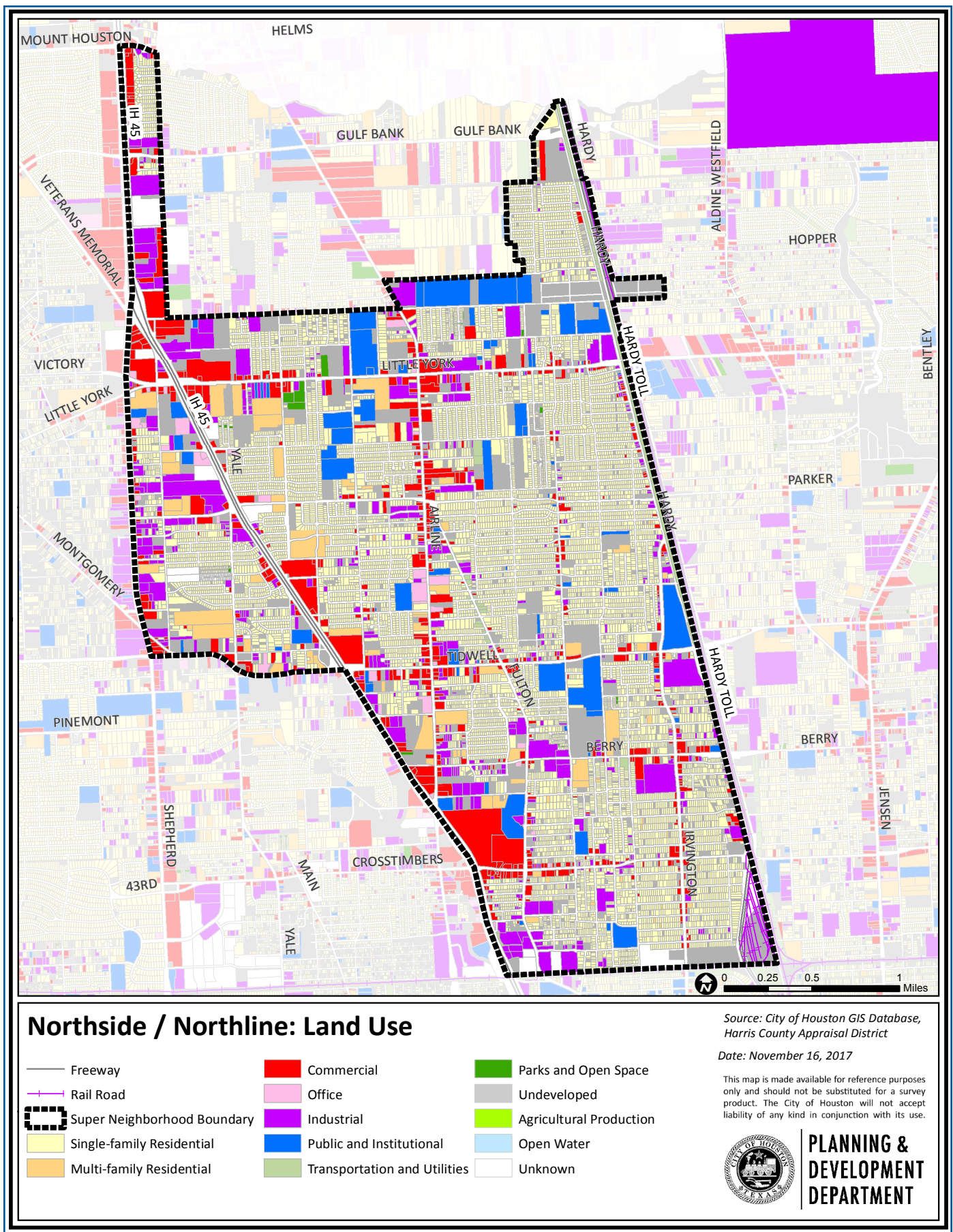
Northside/Northline super neighborhood is in the north central part of the City. The area is largely single-family residential with large apartment complexes located near the I-45 (North Freeway) on the western edge of the community. The two major roadways, I-45 and the Hardy Toll road, provide access to the area. The North Freeway initially spurred development of numerous retail centers, light industrial and distribution facilities in close proximity to the freeway.

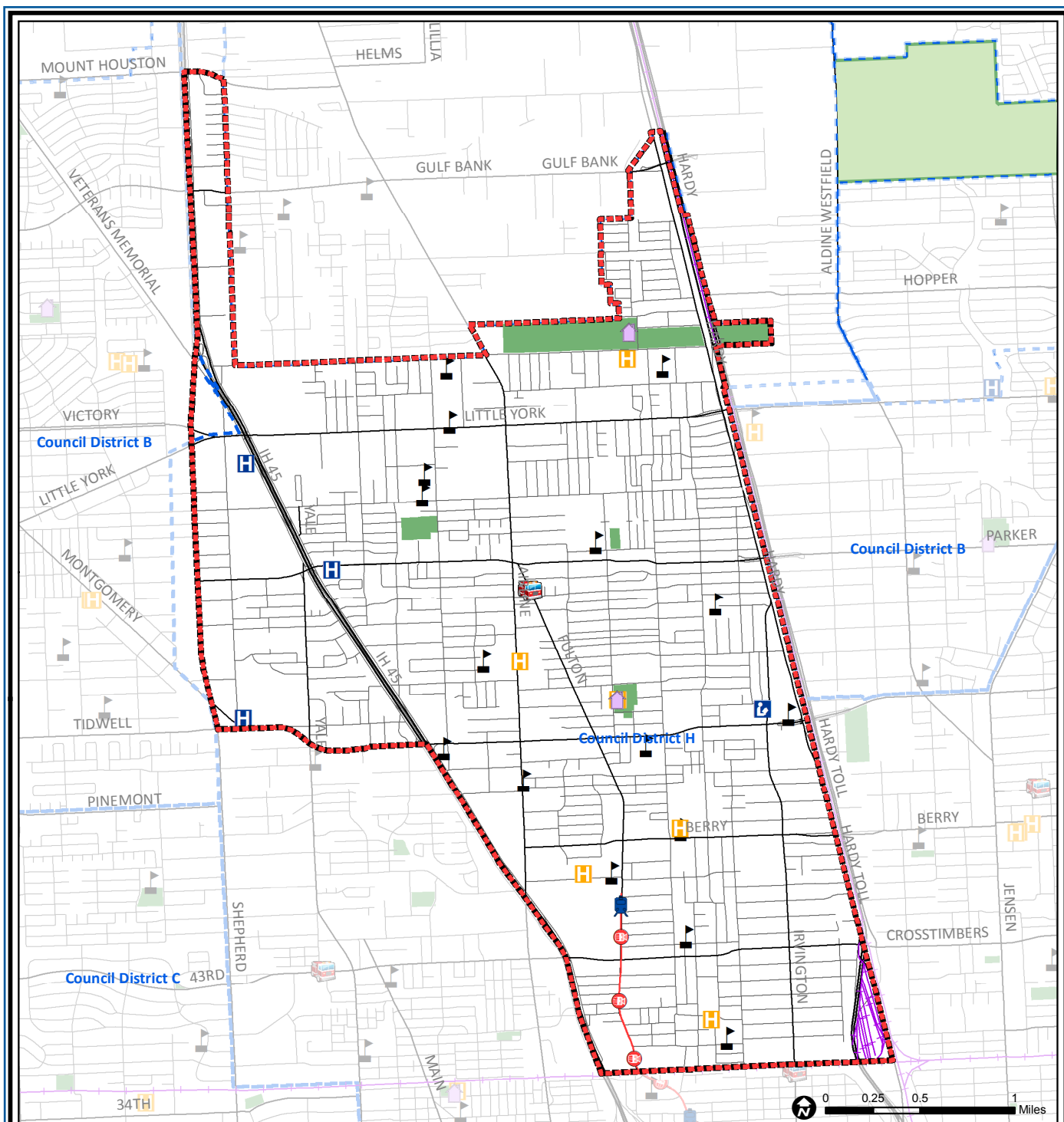
Highlights

- ✓ Houston City Council District H
- ✓ Aldine Independent School District
- ✓ Houston Independent School District
- ✓ 6 Police beats (includes bordering beats)
- ✓ 6,480 acres (10.13 sq. miles)



**PLANNING &
DEVELOPMENT
DEPARTMENT**





Northside / Northline: Public Facilities

Super Neighborhood Boundary

Community Centers

Fire Station

Police Station

School

Airports

Harris County Hospitals

Private Hospitals

Other Health Facilities

Library

Rail Road

Metro Rail Stations

Metro Rail Line

Parks

TIRZ

Source: City of Houston GIS Database

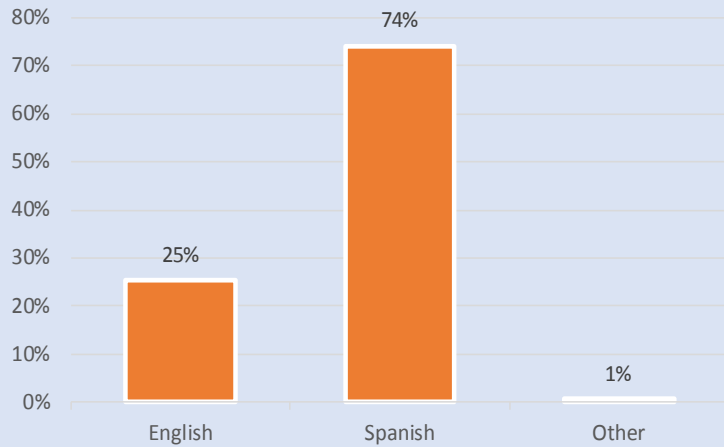
Date: October 2017

This map is made available for reference purposes only and should not be substituted for a survey product. The City of Houston will not accept liability of any kind in conjunction with its use.

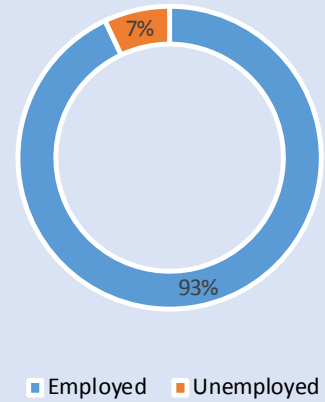


**PLANNING &
DEVELOPMENT
DEPARTMENT**

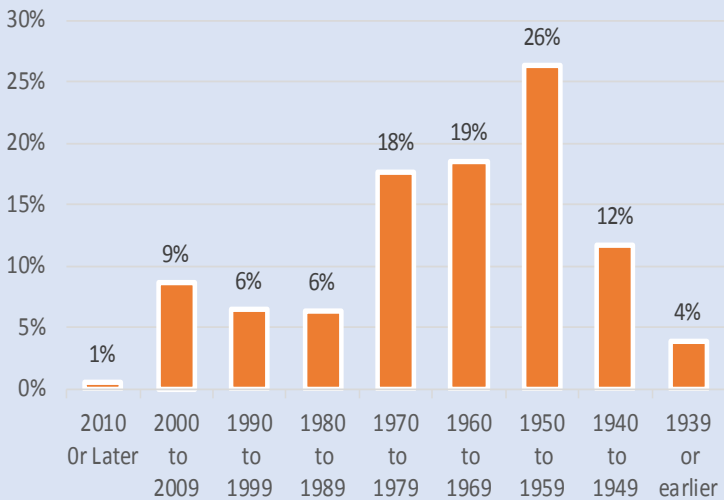
Language Spoken at Home



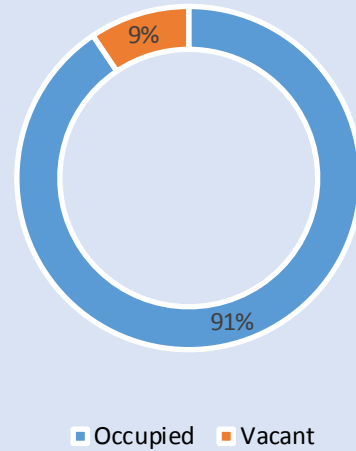
Employment Status



Housing Units by Year Built



Housing Occupancy



Source: U.S. Census Bureau, 2000
American Community Survey, 2011-2015 Estimates



**PLANNING &
DEVELOPMENT
DEPARTMENT**