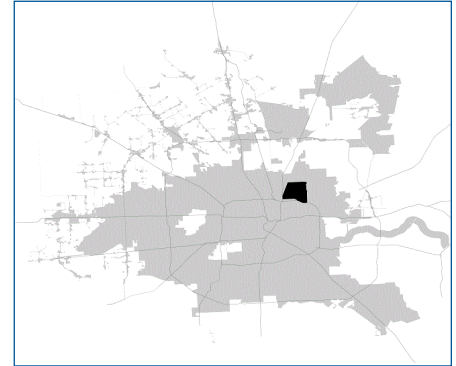


SUPER

Neighborhood

RESOURCE ASSESSMENT



	Super Neighborhood		Houston	
Pop. characteristics	2000	2015	2000	2015
Total population	18,054	15,798	1,953,631	2,217,706
Persons per sq. mile	2,628	2,301	3,166	3,314
Age of Population				
Under 5 years	7%	7%	8%	8%
5- 17 years	21%	19%	19%	17%
18- 64 years	58%	59%	64%	65%
65 and over	14%	15%	9%	10%
Ethnicity				
Non Hispanic Whites	2%	2%	31%	26%
Non Hispanic Blacks	81%	67%	25%	22%
Hispanics	16%	30%	37%	44%
Non Hispanic Asians	0%	0%	6%	7%
Non Hispanic Others	1%	1%	1%	1%
Income				
Under \$25,000	59%	47%	33%	27%
\$25,001 to \$50,000	25%	28%	31%	25%
\$50,001 to \$100,000	13%	19%	24%	26%
Over \$100,001	3%	5%	12%	22%
Median Household Income	\$20,044	\$27,789	\$36,616	\$46,187
Educational Status				
No Diploma	44%	27%	30%	23%
High School Diploma	30%	39%	20%	23%
Some College	19%	26%	23%	24%
Bachelor's or Higher	6%	8%	27%	31%
Housing and Households				
Total housing units	6,844	7,226	782,378	909,336
Occupied	89%	79%	92%	88%
Vacant	11%	21%	8%	12%
Total households	6,103	5,719	717,945	799,714
Family households	4,329	3,416	457,549	491,778
Median Housing Value	\$33,739	\$61,597	\$79,300	\$131,700

Description

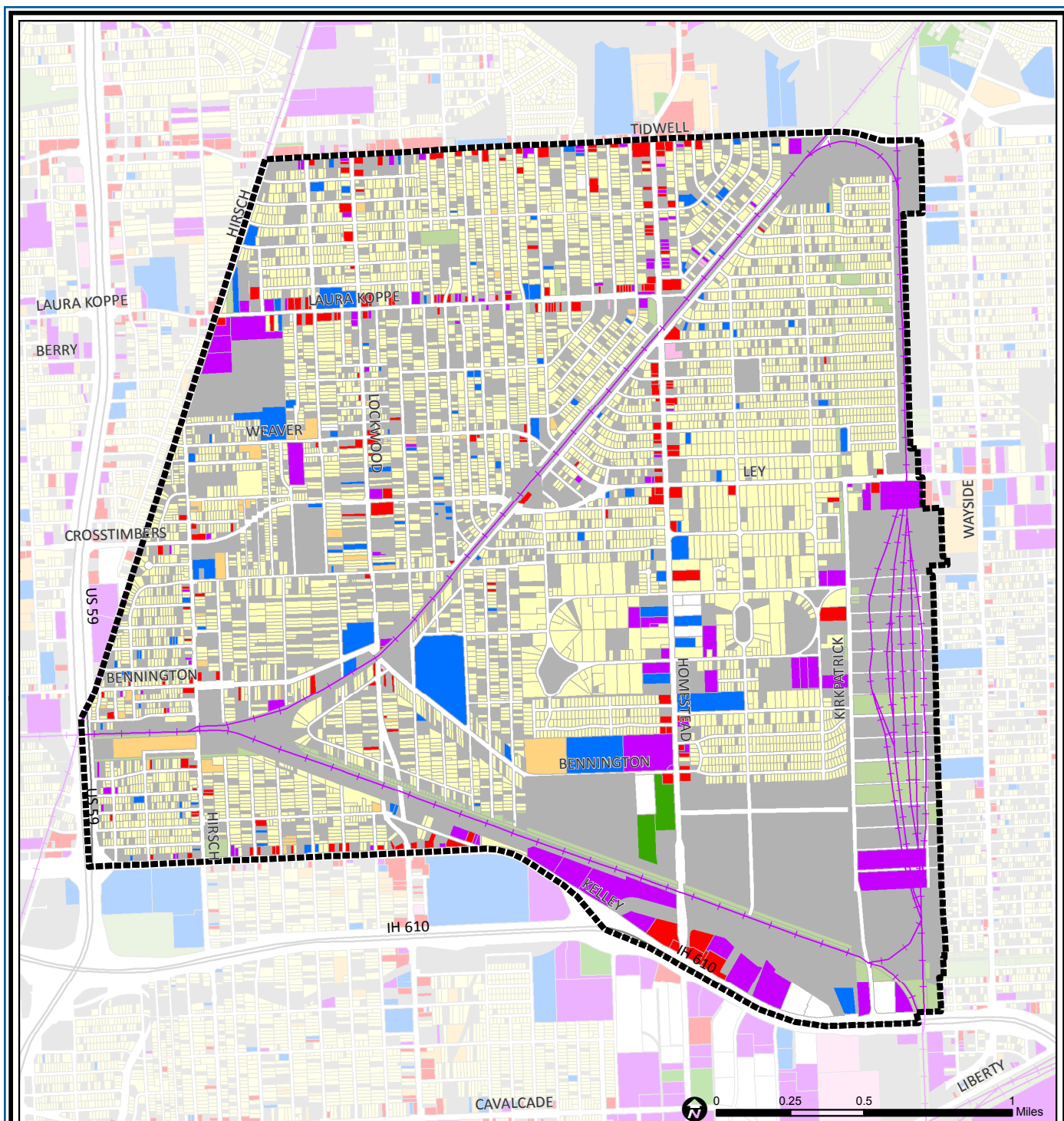
Trinity/Houston Gardens, takes its name from two communities: Trinity Gardens and Houston Gardens. Originally developed as communities just outside the city, each had oversized single-family homesites, allowing residents to have their own gardens. Now, home types vary widely, although most are single family and, generally, affordable. Density remains low. Railroad tracks trisect the neighborhood and are a dominant feature. Some of the inexpensive land has been converted to industrial uses, especially on the community's eastern edge.

Highlights

- ✓ Houston City Council Districts B & H
- ✓ Aldine School Independent School District
- ✓ Houston Independent School District
- ✓ North Forest Independent School District
- ✓ 5 Police beats (includes bordering beats)
- ✓ 4,395 acres (6.87 sq. miles)



**PLANNING &
DEVELOPMENT
DEPARTMENT**



Trinity / Houston Gardens: Land Use

Freeway	Commercial	Parks and Open Space
Rail Road	Office	Undeveloped
Super Neighborhood Boundary	Industrial	Agricultural Production
Single-family Residential	Public and Institutional	Open Water
Multi-family Residential	Transportation and Utilities	Unknown

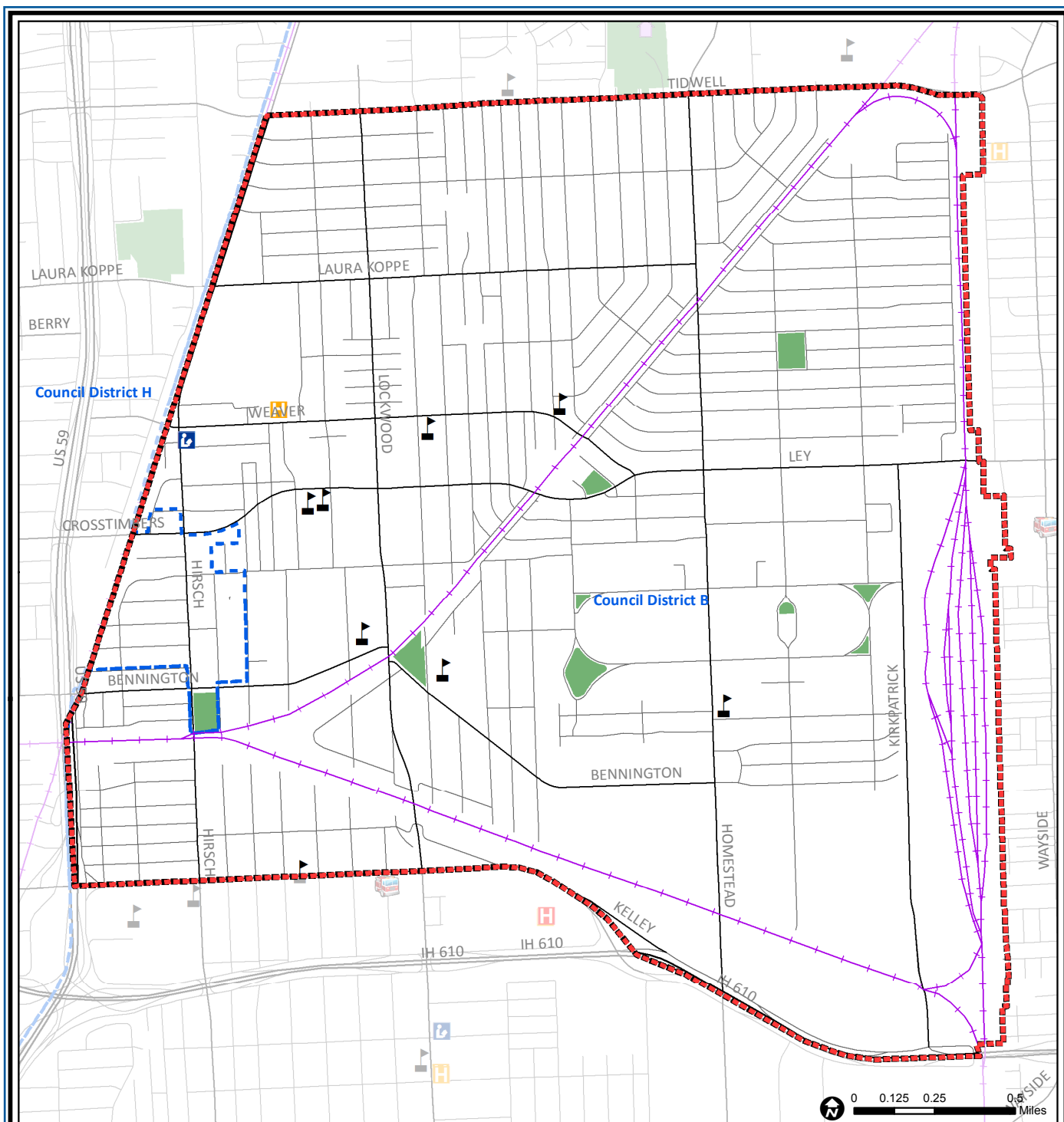
Source: City of Houston GIS Database,
Harris County Appraisal District

Date: November 16, 2017

This map is made available for reference purposes only and should not be substituted for a survey product. The City of Houston will not accept liability of any kind in conjunction with its use.



**PLANNING &
DEVELOPMENT
DEPARTMENT**



Trinity / Houston Gardens: Public Facilities

	Super Neighborhood Boundary		Airports		Rail Road
	Community Centers		Harris County Hospitals		Metro Rail Stations
	Fire Station		Private Hospitals		Metro Rail Line
	Police Station		Other Health Facilities		Parks
	School		Library		TIRZ

Source: City of Houston GIS Database

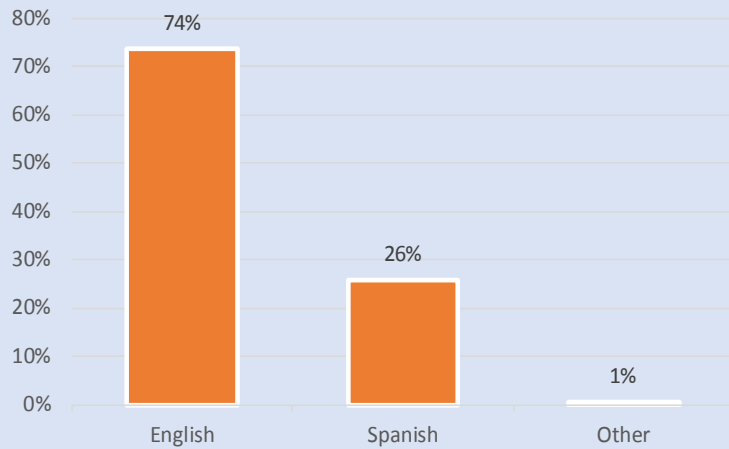
Date: October 2017

This map is made available for reference purposes only and should not be substituted for a survey product. The City of Houston will not accept liability of any kind in conjunction with its use.

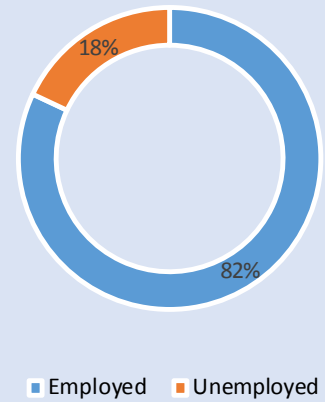


**PLANNING &
DEVELOPMENT
DEPARTMENT**

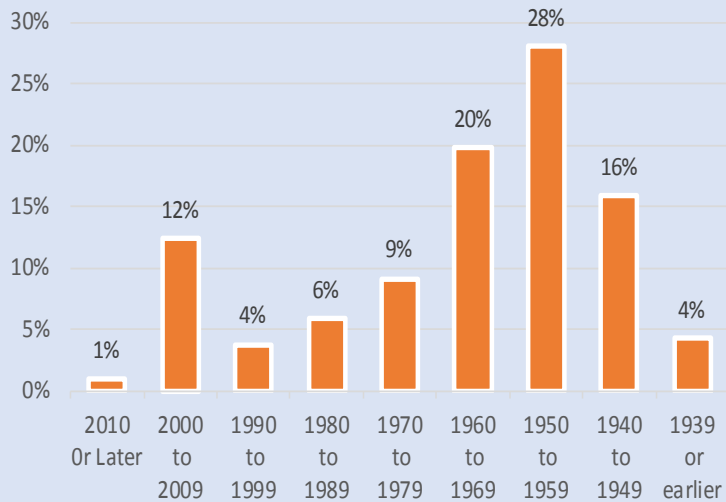
Language Spoken at Home



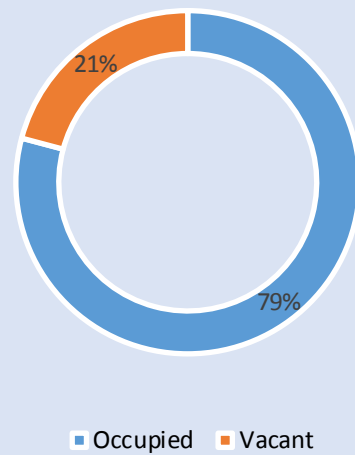
Employment Status



Housing Units by Year Built



Housing Occupancy



Source: U.S. Census Bureau, 2000
American Community Survey, 2011-2015 Estimates



**PLANNING &
DEVELOPMENT
DEPARTMENT**