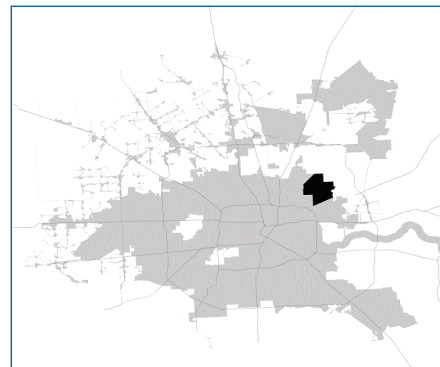


SUPER

Neighborhood

RESOURCE ASSESSMENT



	Super Neighborhood		Houston	
Pop. characteristics	2000	2015	2000	2015
Total population	19,744	18,580	1,953,631	2,217,706
Persons per sq. mile	1,849	1,740	3,166	3,314
Age of Population				
Under 5 years	9%	9%	8%	8%
5- 17 years	27%	19%	19%	17%
18- 64 years	59%	62%	64%	65%
65 and over	6%	10%	9%	10%
Ethnicity				
Non Hispanic Whites	6%	4%	31%	26%
Non Hispanic Blacks	70%	62%	25%	22%
Hispanics	23%	33%	37%	44%
Non Hispanic Asians	0%	1%	6%	7%
Non Hispanic Others	1%	1%	1%	1%
Income				
Under \$25,000	48%	36%	33%	27%
\$25,001 to \$50,000	31%	33%	31%	25%
\$50,001 to \$100,000	18%	26%	24%	26%
Over \$100,001	2%	5%	12%	22%
Median Household Income	\$25,924	\$31,826	\$36,616	\$46,187
Educational Status				
No Diploma	44%	28%	30%	23%
High School Diploma	32%	39%	20%	23%
Some College	20%	25%	23%	24%
Bachelor's or Higher	5%	8%	27%	31%
Housing and Households				
Total housing units	6,122	6,593	782,378	909,336
Occupied	94%	86%	92%	88%
Vacant	6%	14%	8%	12%
Total households	5,744	5,701	717,945	799,714
Family households	4,681	4,152	457,549	491,778
Median Housing Value	\$43,863	\$64,568	\$79,300	\$131,700

Description

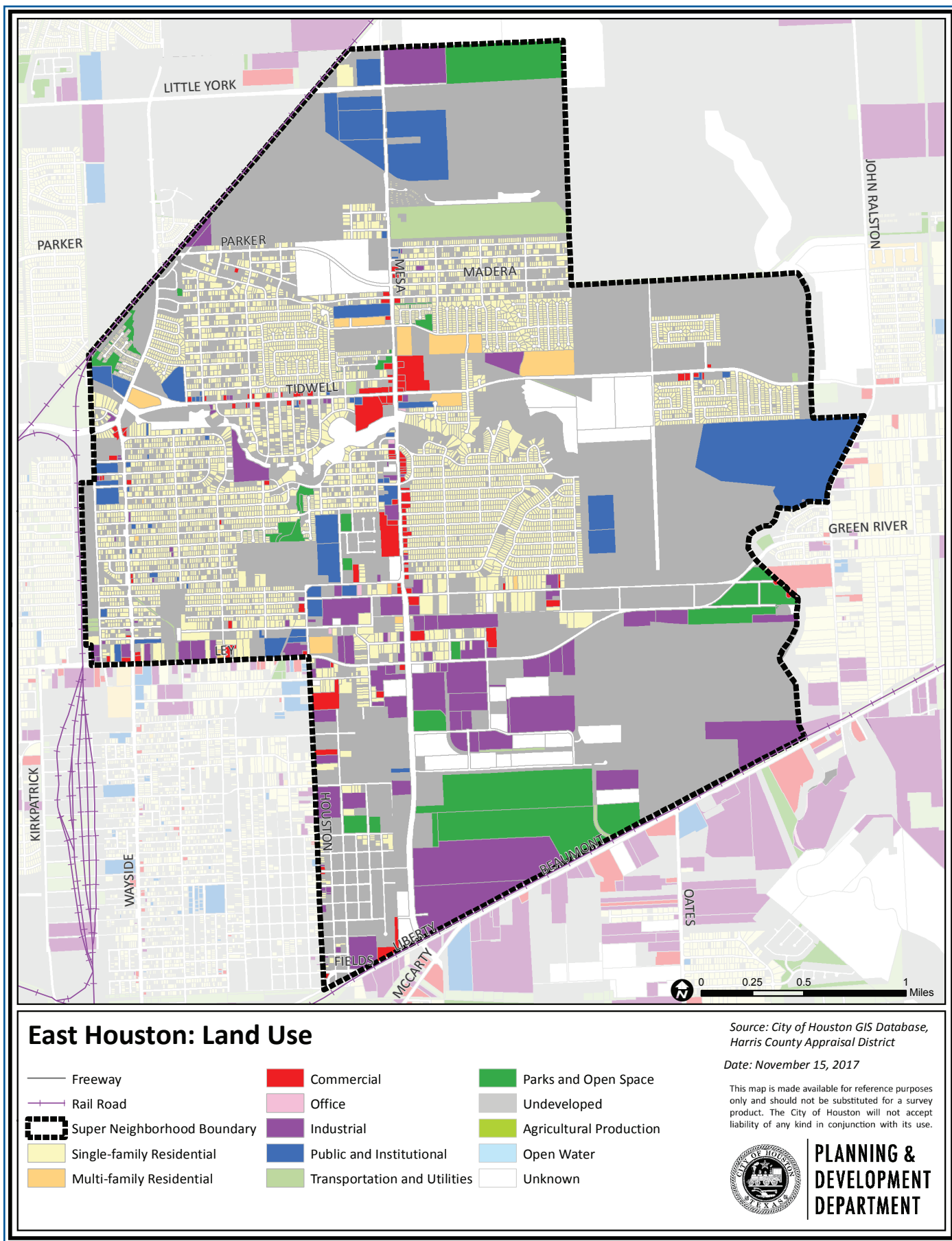
East Houston is a collection of neighborhoods in the northeastern part of the city. The name is taken from an old subdivision located just off what was then the highway to Beaumont; most of that old town site remains undeveloped. The community is made up largely of single family homes in standard suburban tract subdivisions. The area remains generally wooded, especially close to Halls Bayou, where a City of Houston golf course, Brock Park, is found. A major industrial park, Railwood, is located in the southeast corner of the community adjacent to a major land fill.

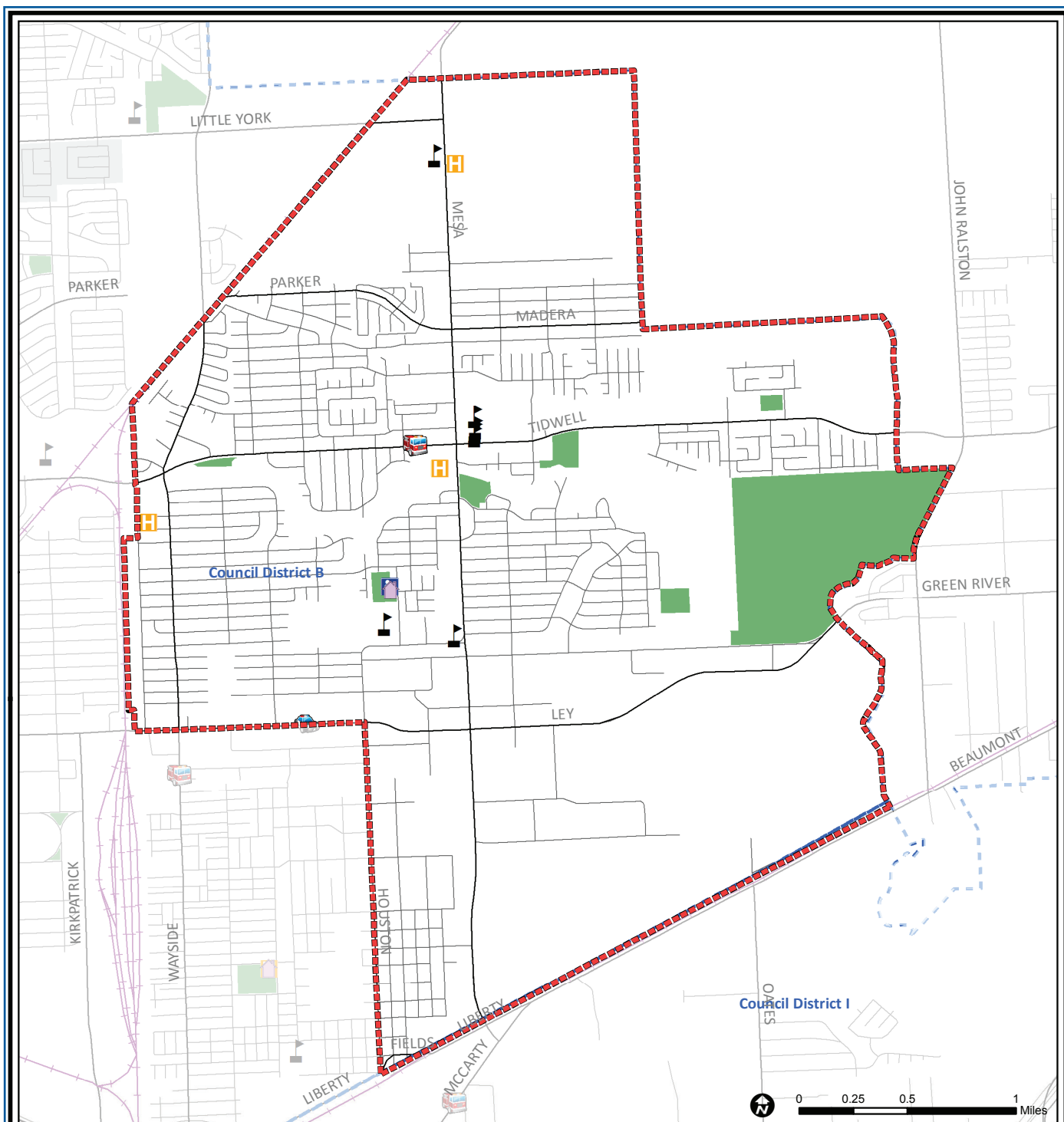
Highlights

- ✓ Houston City Council District B
- ✓ North Forest Independent School District
- ✓ Sheldon Independent School District
- ✓ 4 Police beats (includes bordering beats)
- ✓ 6,833 acres (10.68 sq. miles)



**PLANNING &
DEVELOPMENT
DEPARTMENT**





East Houston: Public Facilities

	Super Neighborhood Boundary		Airports		Rail Road
	Community Centers		Harris County Hospitals		Metro Rail Stations
	Fire Station		Private Hospitals		Metro Rail Line
	Police Station		Other Health Facilities		Parks
	School		Library		TIRZ

Source: City of Houston GIS Database

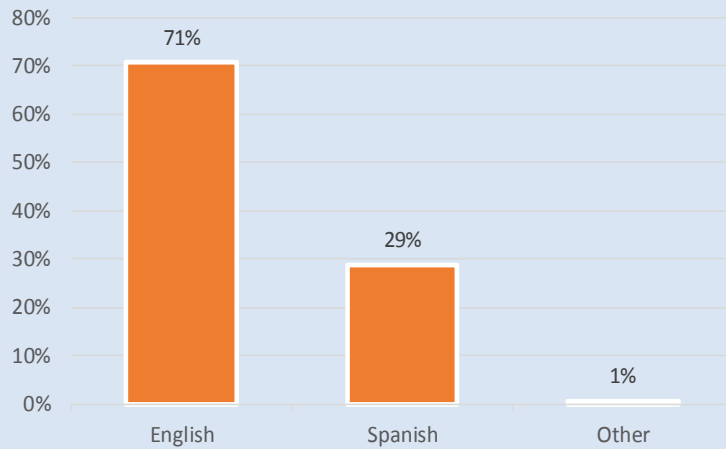
Date: October 2017

This map is made available for reference purposes only and should not be substituted for a survey product. The City of Houston will not accept liability of any kind in conjunction with its use.

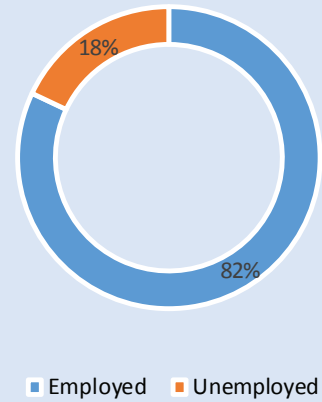


**PLANNING &
DEVELOPMENT
DEPARTMENT**

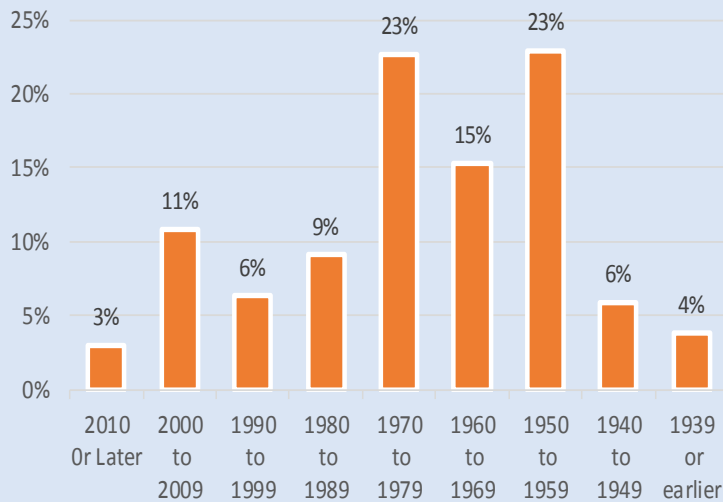
Language Spoken at Home



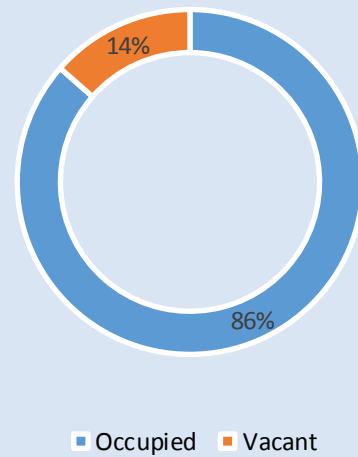
Employment Status



Housing Units by Year Built



Housing Occupancy



Source: U.S. Census Bureau, 2000
American Community Survey, 2011-2015 Estimates



**PLANNING &
DEVELOPMENT
DEPARTMENT**