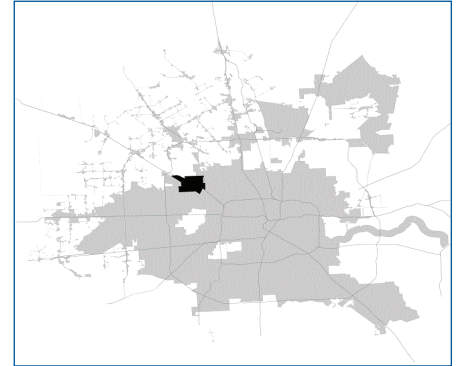


# SUPER

## Neighborhood

### RESOURCE ASSESSMENT



	Super Neighborhood		Houston	
Pop. characteristics	2000	2015	2000	2015
Total population	12,262	18,007	1,953,631	2,217,706
Persons per sq. mile	1,801	2,644	3,166	3,314
<b>Age of Population</b>				
Under 5 years	8%	10%	8%	8%
5- 17 years	16%	19%	19%	17%
18- 64 years	71%	67%	64%	65%
65 and over	5%	4%	9%	10%
<b>Ethnicity</b>				
Non Hispanic Whites	39%	16%	31%	26%
Non Hispanic Blacks	21%	21%	25%	22%
Hispanics	35%	59%	37%	44%
Non Hispanic Asians	4%	2%	6%	7%
Non Hispanic Others	1%	1%	1%	1%
<b>Income</b>				
Under \$25,000	33%	34%	33%	27%
\$25,001 to \$50,000	38%	34%	31%	25%
\$50,001 to \$100,000	25%	23%	24%	26%
Over \$100,001	4%	9%	12%	22%
<b>Median Household Income</b>	\$35,788	\$38,905	\$36,616	\$46,187
<b>Educational Status</b>				
No Diploma	24%	30%	30%	23%
High School Diploma	29%	28%	20%	23%
Some College	29%	27%	23%	24%
Bachelor's or Higher	19%	16%	27%	31%
<b>Housing and Households</b>				
Total housing units	6,166	7,852	782,378	909,336
Occupied	89%	91%	92%	88%
Vacant	11%	9%	8%	12%
Total households	5,499	7,150	717,945	799,714
Family households	2,844	4,037	457,549	491,778
Median Housing Value	\$46,444	\$102,711	\$79,300	\$131,700

### Description

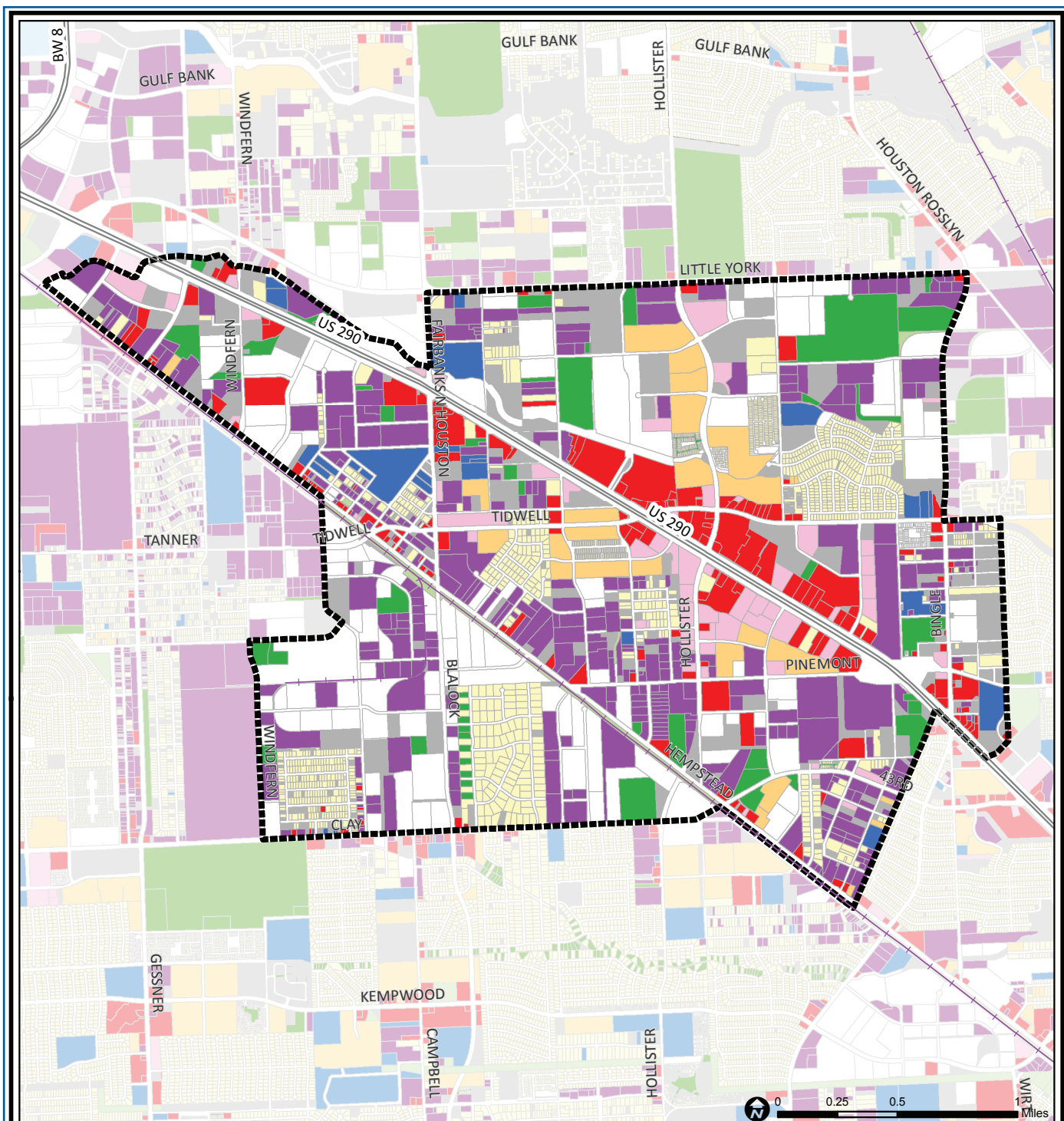
Fairbanks Northwest Crossing is a combination of rural land use and scattered housing and high density urban development that followed the construction of the Northwest Freeway. Many garden apartment complexes are scattered through and around the edge of the Northwest Crossing office and retail development. Prior to the opening of the freeway which bisects the area, access to Houston was provided by the Hempstead Highway, which still is lined with a combination of aging retail developments, light industrial facilities and agricultural service businesses.

### Highlights

- ✓ Houston City Council Districts A & C
- ✓ Cypress-Fairbanks Independent School District
- ✓ Houston Independent School District
- ✓ Aldine Independent School District
- ✓ Spring Branch Independent School District
- ✓ 4 Police beats (includes bordering beats)
- ✓ 4,361 acres (6.81 sq. miles)



**PLANNING &  
DEVELOPMENT  
DEPARTMENT**



## Fairbanks / Northwest Crossing: Land Use

Freeway	Commercial	Parks and Open Space
Rail Road	Office	Undeveloped
Super Neighborhood Boundary	Industrial	Agricultural Production
Single-family Residential	Public and Institutional	Open Water
Multi-family Residential	Transportation and Utilities	Unknown

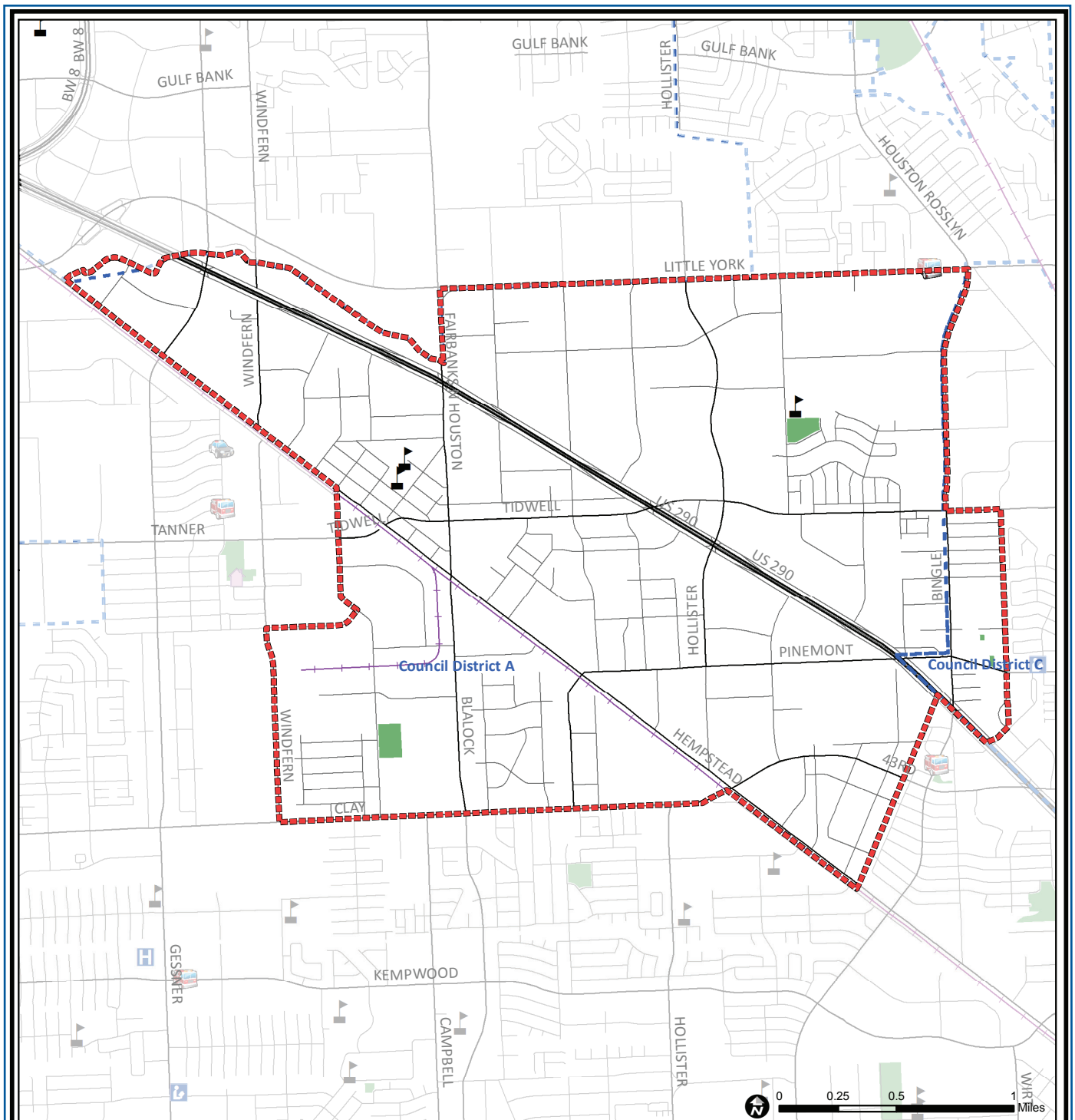
Source: City of Houston GIS Database,  
Harris County Appraisal District

Date: November 15, 2017

This map is made available for reference purposes only and should not be substituted for a survey product. The City of Houston will not accept liability of any kind in conjunction with its use.



**PLANNING &  
DEVELOPMENT  
DEPARTMENT**



## Fairbanks / Northwest Crossing

Super Neighborhood Boundary

Community Centers

Fire Station

Police Station

School

Airports

Harris County Hospitals

Private Hospitals

Other Health Facilities

Library

Rail Road

Metro Rail Stations

Metro Rail Line

Parks

TIRZ

Source: City of Houston GIS Database

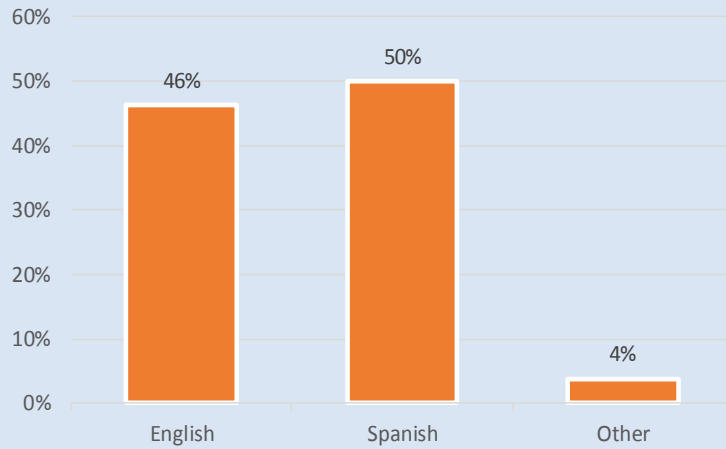
Date: October 2017

This map is made available for reference purposes only and should not be substituted for a survey product. The City of Houston will not accept liability of any kind in conjunction with its use.

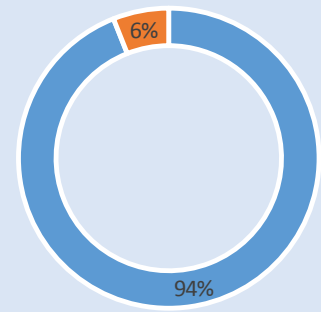


**PLANNING &  
DEVELOPMENT  
DEPARTMENT**

### Language Spoken at Home

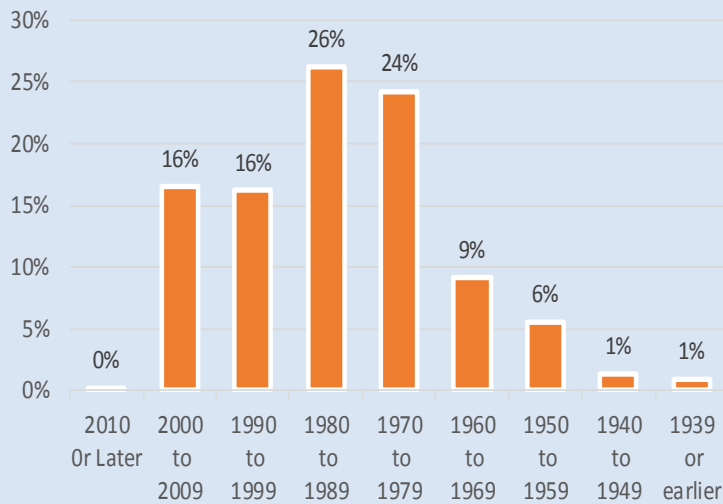


### Employment Status

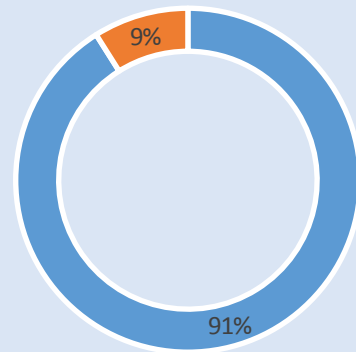


■ Employed ■ Unemployed

### Housing Units by Year Built



### Housing Occupancy



■ Occupied ■ Vacant

Source: U.S. Census Bureau, 2000  
American Community Survey, 2011-2015 Estimates



**PLANNING &  
DEVELOPMENT  
DEPARTMENT**