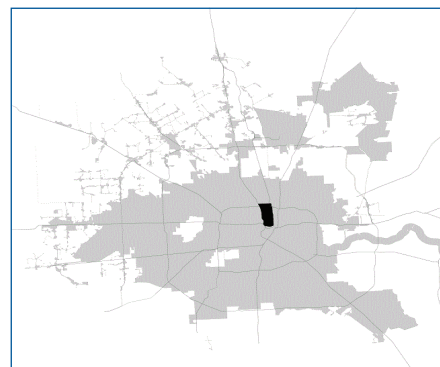


# SUPER

## Neighborhood

### RESOURCE ASSESSMENT



	Super Neighborhood		Houston	
Pop. characteristics	2000	2015	2000	2015
Total population	29,923	27,348	1,953,631	2,217,706
Persons per sq. mile	6,895	6,298	3,166	3,314
<b>Age of Population</b>				
Under 5 years	8%	8%	8%	8%
5- 17 years	22%	19%	19%	17%
18- 64 years	59%	63%	64%	65%
65 and over	10%	10%	9%	10%
<b>Ethnicity</b>				
Non Hispanic Whites	8%	8%	31%	26%
Non Hispanic Blacks	8%	10%	25%	22%
Hispanics	84%	81%	37%	44%
Non Hispanic Asians	0%	0%	6%	7%
Non Hispanic Others	0%	1%	1%	1%
<b>Income</b>				
Under \$25,000	48%	40%	33%	27%
\$25,001 to \$50,000	31%	31%	31%	25%
\$50,001 to \$100,000	18%	19%	24%	26%
Over \$100,001	3%	9%	12%	22%
<b>Median Household Income</b>	\$26,537	\$36,845	\$36,616	\$46,187
<b>Educational Status</b>				
No Diploma	58%	44%	30%	23%
High School Diploma	23%	27%	20%	23%
Some College	13%	20%	23%	24%
Bachelor's or Higher	6%	10%	27%	31%
<b>Housing and Households</b>				
Total housing units	9,564	10,164	782,378	909,336
Occupied	92%	85%	92%	88%
Vacant	8%	15%	8%	12%
Total households	8,838	8,657	717,945	799,714
Family households	6,539	5,817	457,549	491,778
Median Housing Value	\$47,673	\$127,793	\$79,300	\$131,700

### Description

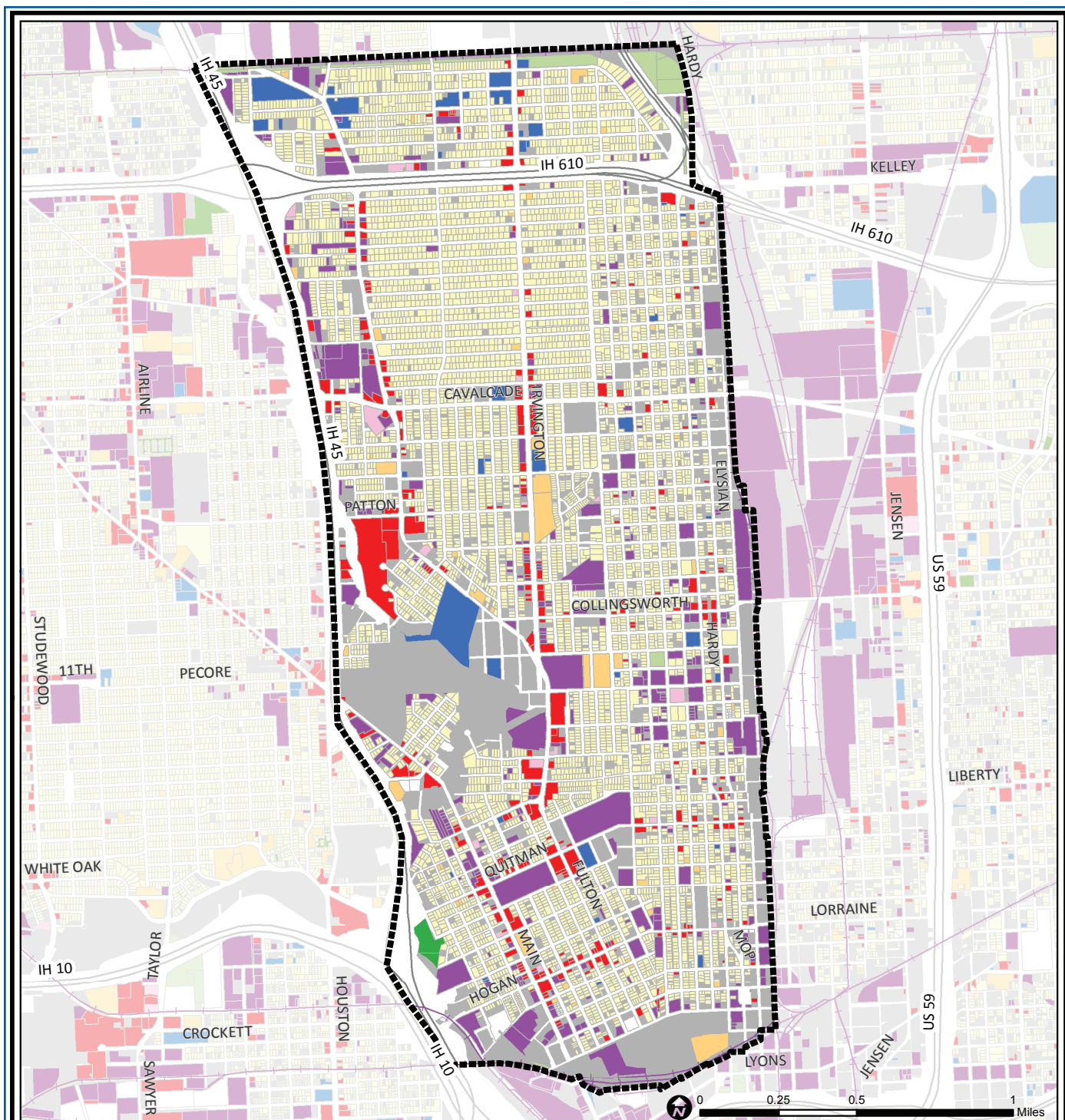
Near Northside is immediately adjacent to Downtown. The southern two thirds of the area consists of wood frame homes surrounding commercial properties along North Main and Fulton. The northern third includes Lindale Park, with its large lots and more substantial homes. Moody Park is an important gathering place in the center of the community, as is the Davis High School-Marshall Middle School-Carnegie Library complex in the southern part of the community. Extension of the Hardy Toll Road runs along the entire eastern edge of the area.

### Highlights

- ✓ Houston City Council District H
- ✓ Houston Independent School District
- ✓ 6 Police beats (includes bordering beats)
- ✓ 2,779 acres (4.34 sq. miles)



**PLANNING &  
DEVELOPMENT  
DEPARTMENT**



## Near Northside: Land Use

	Freeway		Commercial		Parks and Open Space
	Rail Road		Office		Undeveloped
	Super Neighborhood Boundary		Industrial		Agricultural Production
	Single-family Residential		Public and Institutional		Open Water
	Multi-family Residential		Transportation and Utilities		Unknown

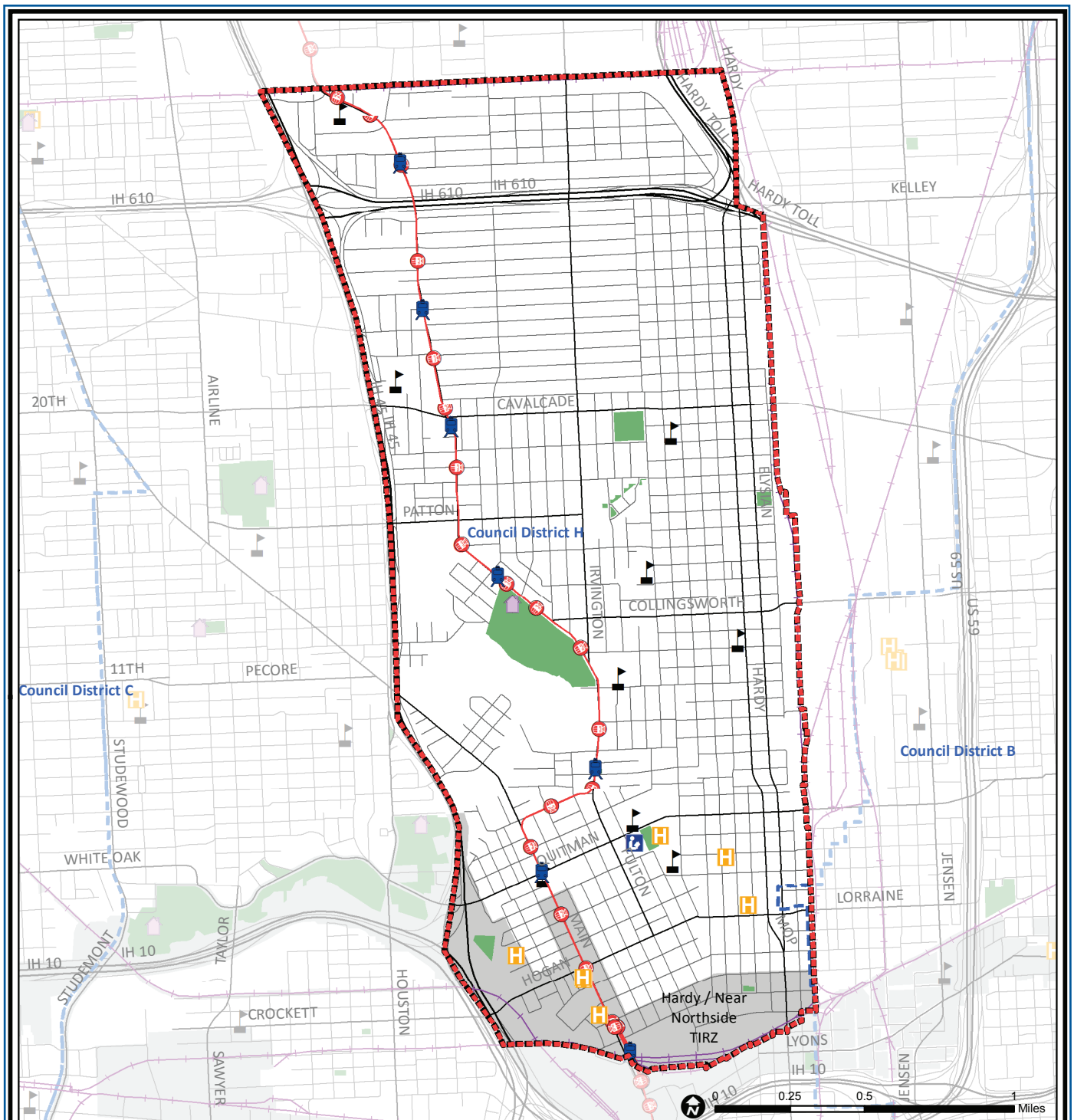
Source: City of Houston GIS Database,  
Harris County Appraisal District

Date: November 16, 2017

This map is made available for reference purposes  
only and should not be substituted for a survey  
product. The City of Houston will not accept  
liability of any kind in conjunction with its use.



**PLANNING &  
DEVELOPMENT  
DEPARTMENT**



## Near Northside: Public Facilities

- Super Neighborhood Boundary
- Community Centers
- Fire Station
- Police Station
- School

- Airports
- Harris County Hospitals
- Private Hospitals
- Other Health Facilities
- Library

- Rail Road
- Metro Rail Stations
- Metro Rail Line
- Parks
- TIRZ

Source: City of Houston GIS Database

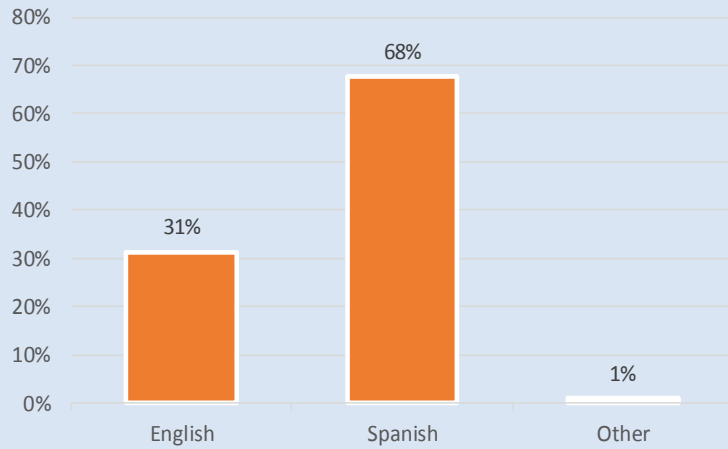
Date: October 2017

This map is made available for reference purposes only and should not be substituted for a survey product. The City of Houston will not accept liability of any kind in conjunction with its use.

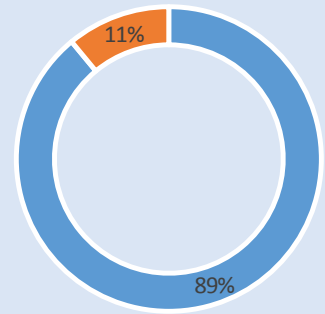


**PLANNING &  
DEVELOPMENT  
DEPARTMENT**

### Language Spoken at Home

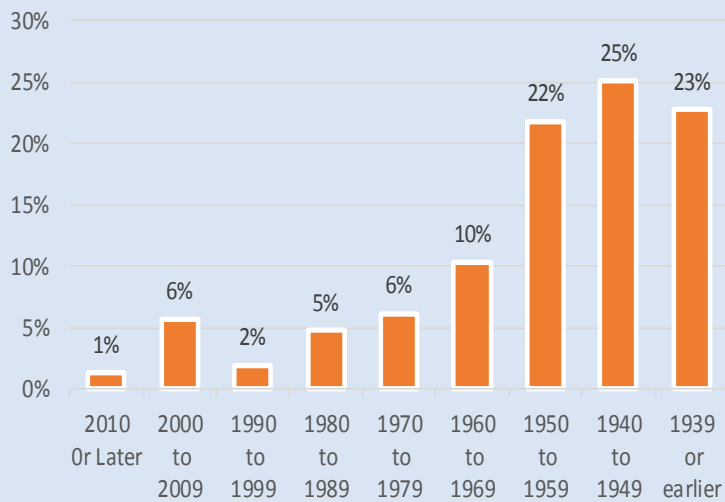


### Employment Status

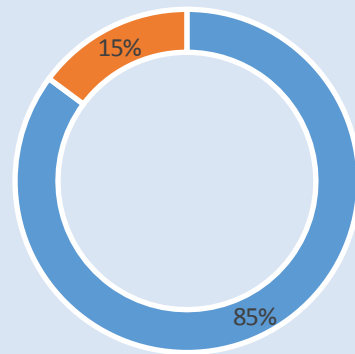


■ Employed ■ Unemployed

### Housing Units by Year Built



### Housing Occupancy



■ Occupied ■ Vacant

Source: U.S. Census Bureau, 2000  
American Community Survey, 2011-2015 Estimates



**PLANNING &  
DEVELOPMENT  
DEPARTMENT**